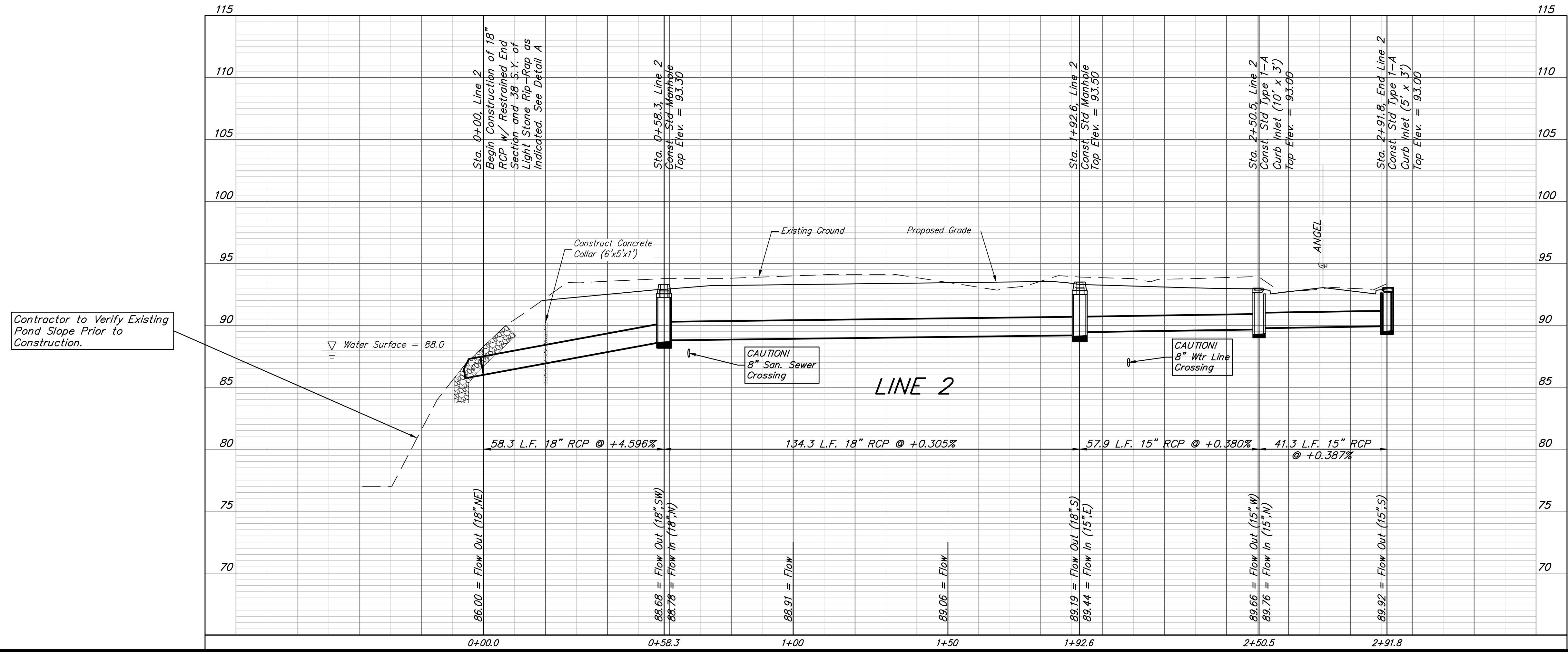
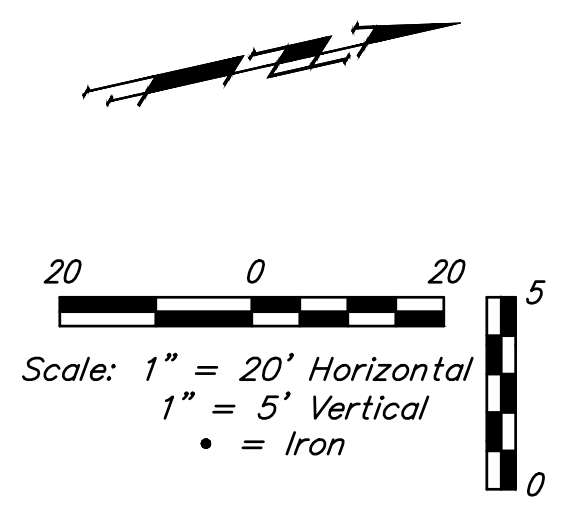
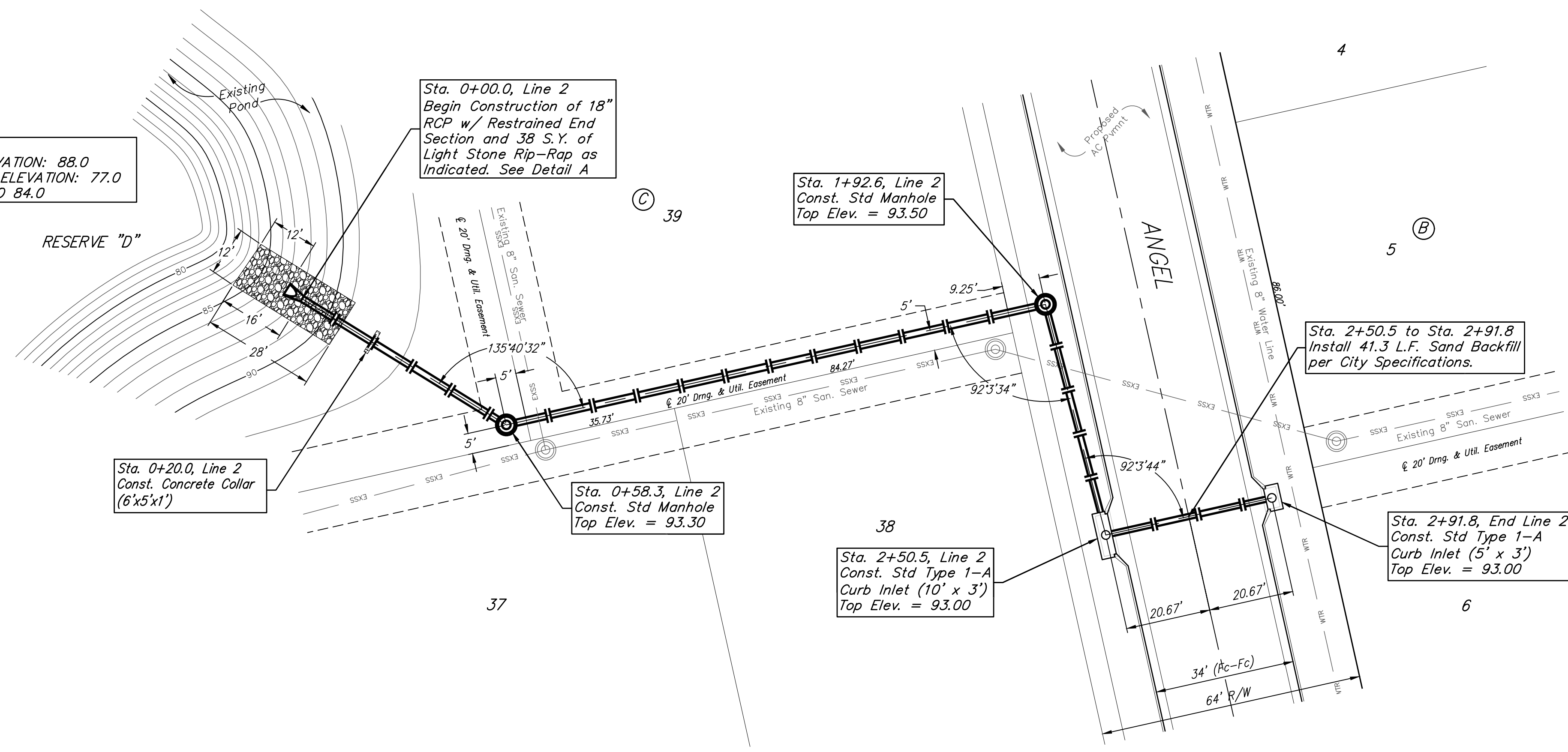


BENCHMARKS:
 BRASS DISC ON TOP OF CURB
 EAST END OF CURB RETURN,
 NORTH OF THE NW COR., LOT 49,
 BLOCK C, ANGEL FIRE ADDITION.
 ELEV. = 94.37 CITY DATUM
 ELEV. = 1282.23 NAVD88

BRASS DISC ON TOP OF CURB
 NORTH END OF CURB RETURN,
 WEST OF THE SW COR., LOT 1,
 BLOCK B, ANGEL FIRE ADDITION.
 ELEV. = 94.82 CITY DATUM
 ELEV. = 1282.68 NAVD88

- NOTES:**
- Contractor to Dewater Pond to Elevation 84.0 by Pumping or Cofferdam to Install Storm Water Sewer.
 - Contractor to Save Liner Material & Pack Around End Section.
 - Contractor to Adjust End Section to Match Existing Pond Slope.

POND DATA:
 STATIC POOL ELEVATION: 88.0
 EXISTING BOTTOM ELEVATION: 77.0
 DEWATER POND TO 84.0



BAUGHMAN COMPANY
 315 Ellis St.
 Wichita, KS 67211
 316-262-7271
 BaughmanCo.com

ANGEL FIRE 2ND ADDITION

LINE 2

STORM WATER DRAIN IMPROVEMENTS

PROJECT NUMBER:
472-2021-085714

DESIGN: NBW DRAWN: CDW

DATE: August 20, 2021

SHEET OF
19 44

File: E:\Projects\Angel Fire 2nd Addition_11-03-P797\Engineering\Phase 1\SWD_21-02-E849\SWIS-SWD PLANS.dwg