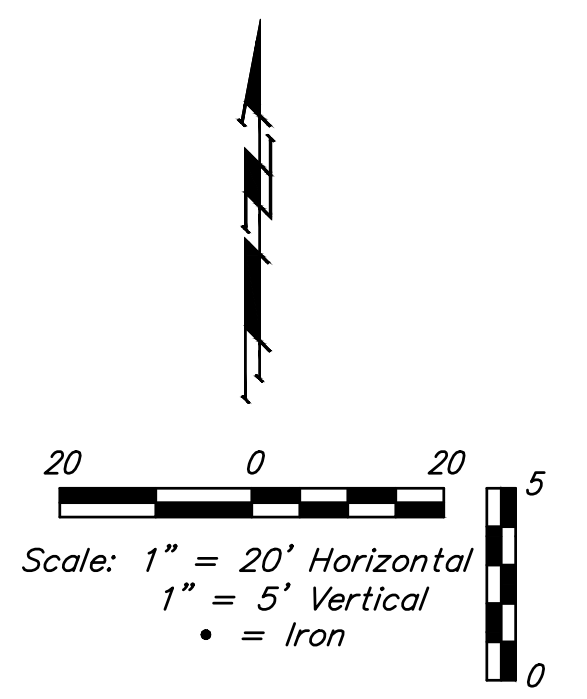
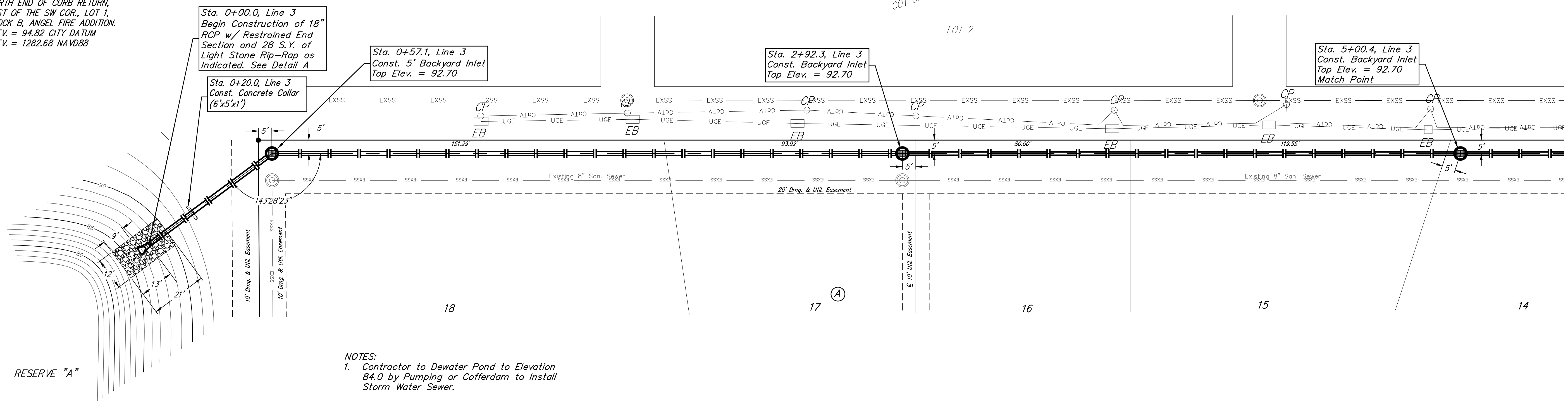


BENCHMARKS:
 BRASS DISC ON TOP OF CURB
 EAST END OF CURB RETURN,
 NORTH OF THE NW COR., LOT 49,
 BLOCK C, ANGEL FIRE ADDITION.
 ELEV. = 94.37 CITY DATUM
 ELEV. = 1282.23 NAVD88

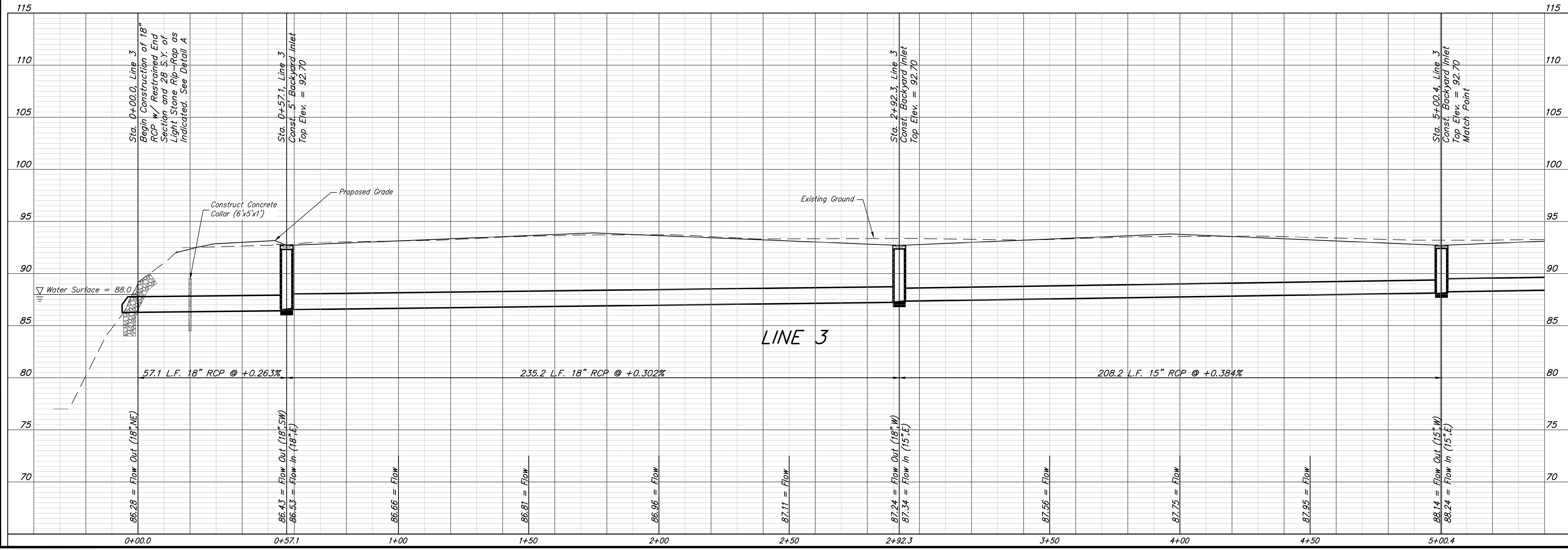
BRASS DISC ON TOP OF CURB
 NORTH END OF CURB RETURN,
 WEST OF THE SW COR., LOT 1,
 BLOCK B, ANGEL FIRE ADDITION.
 ELEV. = 94.82 CITY DATUM
 ELEV. = 1282.68 NAVD88



RESERVE "A"

POND DATA:
 STATIC POOL ELEVATION: 88.0
 EXISTING BOTTOM ELEVATION: 77.0
 DEWATER POND TO 84.0

- NOTES:**
1. Contractor to Dewater Pond to Elevation 84.0 by Pumping or Cofferdam to Install Storm Water Sewer.
 2. Contractor to Save Liner Material & Pack Around End Section.
 3. Contractor to Adjust End Section to Match Existing Pond Slope.



BAUGHMAN COMPANY

315 Ellis St.
 Wichita, KS 67211
 316-262-7271
 BaughmanCo.com

ANGEL FIRE 2ND ADDITION

LINE 3

STORM WATER DRAIN IMPROVEMENTS

PROJECT NUMBER:
 472-2021-085714

DESIGN: NBW DRAWN: CDW

DATE: August 20, 2021

SHEET **20** OF **44**

File: E:\Projects\Angel Fire 2nd Addition_11-03-P7971\Engineering\Phase 1\SWD_21-02-E849\SWIS-SWD PLANS.dwg