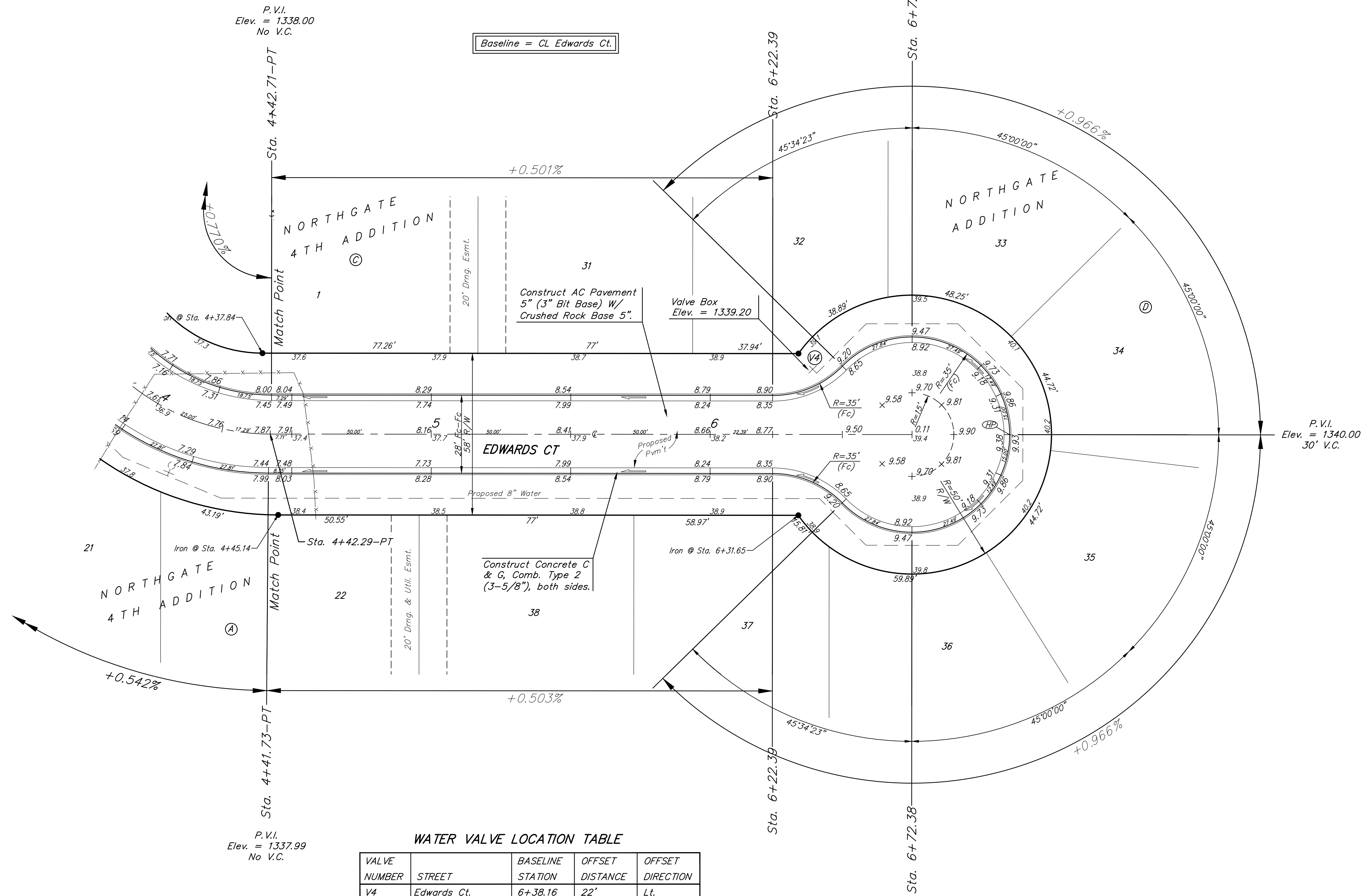
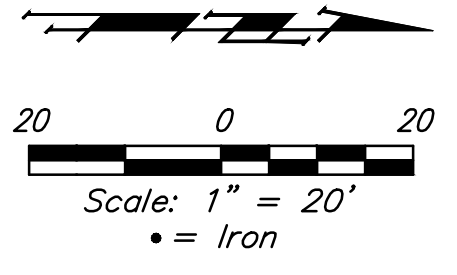


BENCHMARKS:

BM #1: "□" Cut on top of curb adjacent to the SE Cor. Lot 28, Block A, Northgate Addition. Elev. = 1339.82 NAVD88

BM #2: "□" Cut on top of curb adjacent to the SW Cor. Lot 17, Block D, Northgate Addition. Elev. = 1338.86 NAVD88

BM #3: "□" Cut on curb inlet adjacent to the SW Cor. Lot 1, Block C, Northgate 4th Addition. Elev. = 1336.32 NAVD88



P.V.I.
Elev. = 1338.00
No V.C.

Baseline = CL Edwards Ct.

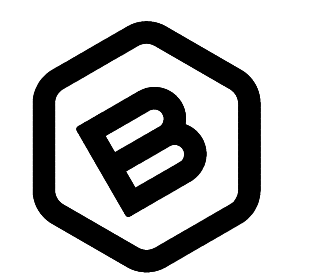
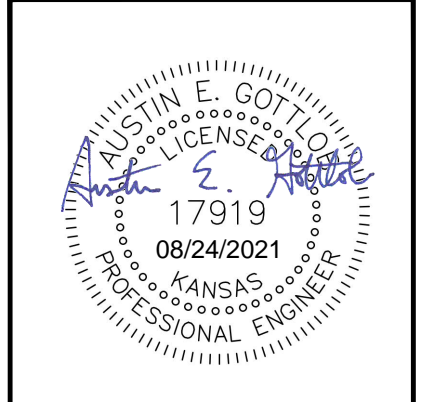
P.V.I.
Elev. = 1340.00
30' V.C.

WATER VALVE LOCATION TABLE

VALVE NUMBER	STREET	BASELINE STATION	OFFSET DISTANCE	OFFSET DIRECTION
V4	Edwards Ct.	6+38.16	22'	Lt.

Paving contractor will be responsible to operate all water valves on the project, in the presence of the inspector, to ensure accessibility to the valves, and that all valves (except blowoffs) are left in the "ON" position when the project is completed.

NOTE: ROLL TYPE CURB & GUTTER (TYPE 2) TO BE CONSTRUCTED ON THE PAVEMENT SHOWN ON THIS SHEET. TOP OF CURB ELEVATIONS ARE GIVEN FOR FULL HEIGHT CURB (TYPE 4).



BAUGHMAN COMPANY

315 Ellis St.
Wichita, KS 67211
316-262-7271
BaughmanCo.com

NORTHGATE ADDITION
Phase 4B

EDWARDS CT.

STREET IMPROVEMENTS

PROJECT NUMBER:

DESIGN: AEG DRAWN: TMS

DATE: August 9, 2021

SHEET **3** OF **18**

File: E:\Projects\Northgate\Engineering\Phase 4B\STR\STR.dwg