

GENERAL NOTES

- THE CONTRACTOR SHALL COMPLY WITH ALL APPLICABLE SAFETY REGULATIONS. ALL CONSTRUCTION SHALL BE COMPLETED FOLLOWING CURRENT CITY STANDARD SPECIFICATIONS AND SPECIAL PROVISIONS.
- CONTRACTOR WILL BE REQUIRED TO PROVIDE NOTICE TO UTILITY COMPANIES A MINIMUM OF SEVENTY-TWO (72) HOURS PRIOR TO ANY EXCAVATION, AS FOLLOWS:
KANSAS ONE-CALL 687-2470
THE CONTRACTOR MUST NOTIFY THE FOLLOWING IN CASE OF AN EMERGENCY:
AT&T 1-800-246-8464
BLACK HILLS ENERGY (GAS) 1-800-694-8989
CITY OF WICHITA WATER & SEWER 1-316-219-8921
CITY OF WICHITA STORMWATER 1-316-268-4090
CITY OF WICHITA TRAFFIC 1-316-268-4034
COX COMMUNICATIONS 1-888-249-3530
KANSAS GAS SERVICE 1-888-482-4950
EVERGY 1-800-544-4857
- UTILITY SERVICE LINES, POLES, ETC. ARE TO BE ADJUSTED AS NECESSARY BY OTHERS PRIOR TO CONSTRUCTION UNLESS THE PLANS SPECIFICALLY CALL FOR THEIR ADJUSTMENT BY THE CONTRACTOR OR UNLESS THE PLANS SPECIFICALLY IDENTIFY A UTILITY TO BE ADJUSTED BY ITS OWNER DURING CONSTRUCTION. EXISTING UTILITIES AND THEIR LOCATION, AS SHOWN ON THE PLANS, REPRESENT THE BEST INFORMATION OBTAINABLE FOR DESIGN. THE CONTRACTOR WILL BE REQUIRED TO WORK AROUND EXISTING UTILITIES WITHIN THE RIGHT-OF-WAY WHICH DO NOT CONFLICT WITH PROPOSED CONSTRUCTION.
- RUBBLE FROM THE REMOVAL OF MISCELLANEOUS STRUCTURES AND EXCESS EXCAVATION WHICH IS TO BE WASTED SHALL BE DISPOSED OF ON SITES TO BE PROVIDED BY THE CONTRACTOR. THESE SITES SHALL BE APPROVED BY THE ENGINEER AS TO SUITABILITY, APPEARANCE AND SITE LOCATION. LOCATIONS, IN THE OPINION OF THE ENGINEER, THAT WILL LEAVE AN UNSIGHTLY APPEARANCE WILL NOT BE APPROVED. ALL DISPOSAL SITES MUST BE APPROVED BY THE KANSAS DEPARTMENT OF HEALTH AND ENVIRONMENT. MATERIAL EITHER STOCKPILED OR DISPOSED OF IN A FLOOD PLAIN WILL REQUIRE A KANSAS STATE BOARD OF AGRICULTURE PERMIT. ANY MATERIAL DUMPED IN WATERS OF THE UNITED STATES OR WETLANDS IS SUBJECT TO U.S. CORPS OF ENGINEERS PERMITTING REGULATIONS. ANY MATERIAL BURIED OR STOCKPILED BEYOND APPROVED CONSTRUCTION LIMITS WILL REQUIRE ADDITIONAL ARCHAEOLOGICAL INVESTIGATIONS UNLESS BURIED IN A PREVIOUSLY APPROVED BORROW LOCATION.
- TREES AND SHRUBS IN PUBLIC RIGHT-OF-WAY WHICH ARE IN DIRECT CONFLICT WITH PROPOSED NEW CONSTRUCTION SHALL BE REMOVED BY THE CONTRACTOR WITH THE CITY ENGINEER'S APPROVAL. TREES AND SHRUBS WHICH ARE NOT IN DIRECT CONFLICT WITH PROPOSED NEW CONSTRUCTION SHALL BE SAVED AND PROTECTED FROM DAMAGE.
- THE CONTRACTOR SHALL GIVE ALL PROPERTY OWNERS AND/OR TENANTS OF DEVELOPED PROPERTY ABUTTING THE CONSTRUCTION OF THIS PROJECT A MINIMUM OF TEN (10) DAYS NOTICE PRIOR TO START OF CONSTRUCTION.
- THE CONTRACTOR SHALL BE RESPONSIBLE FOR PRESERVING PROPERTY IRONS. THE CONTRACTOR WILL BE REQUIRED TO RE-ESTABLISH ANY PROPERTY IRONS WHICH ARE DAMAGED OR DESTROYED BY HIS CONSTRUCTION OPERATIONS. SUCH IRONS SHALL BE RE-ESTABLISHED BY A LICENSED LAND SURVEYOR IN ACCORDANCE WITH STATE LAWS.
- THE ENGINEERING DIVISION SHALL FIELD LOCATE WATER VALVES ONE TIME DURING CONSTRUCTION WHEN REQUESTED BY THE CONTRACTOR. IT SHALL BE THE CONTRACTOR'S RESPONSIBILITY TO PRESERVE SUCH FIELD LOCATIONS DURING THE CONSTRUCTION PROCESS. WATER VALVES, VALVE BOXES OR FIRE HYDRANTS DAMAGED DURING CONSTRUCTION SHALL BE REPAIRED BY CONTRACTOR AT HIS OWN EXPENSE. VALVE BOXES AND WATER METERS WITHIN THE PROJECT LIMITS SHALL BE ADJUSTED TO MATCH FIELD GRADES BY THE CONTRACTOR.
- IF TRAFFIC WILL BE IMPACTED BY CONSTRUCTION, A TRAFFIC CONTROL PLAN MUST BE SUBMITTED AND APPROVED BY THE CITY TRAFFIC ENGINEER AT traffic@wichita.gov BEFORE CONSTRUCTION CAN BEGIN. THE CONTRACTOR SHALL BE RESPONSIBLE FOR ALL TRAFFIC CONTROL MEASURES TO FACILITATE CONSTRUCTION. ALL CONSTRUCTION ZONE MARKINGS AND SIGNAGE SHALL CONFORM TO THE LATEST VERSION OF THE MANUAL ON UNIFORM TRAFFIC CONTROL DEVICES (MUTCD) AS PUBLISHED BY THE US DEPT. OF TRANSPORTATION, FEDERAL HIGHWAY ADMINISTRATION. ALL COSTS ASSOCIATED WITH CONSTRUCTION MARKINGS AND SIGNAGE SHALL BE THE CONTRACTOR'S RESPONSIBILITY.
- ALL AREAS DISTURBED DURING CONSTRUCTION THAT WILL NOT BE UNDER PROPOSED PAVEMENT SHALL BE SEEDED AND MULCHED. COST SHALL BE CONSIDERED SUBSIDIARY TO PROJECT SEEDING.
- CONTRACTOR SHALL LIMIT THE EXTENT OF TRENCH OPEN OVERNIGHT AND WEEKENDS TO LESS THAN 50 FEET.
- EXISTING UTILITIES AND THEIR LOCATION, AS SHOWN ON THE PLANS REPRESENT THE BEST INFORMATION OBTAINABLE FOR DESIGN. LOCATION INFORMATION HAS BEEN OBTAINED FROM THE VARIOUS COMPANIES AND IS EITHER FROM COMPANY UTILITY DRAWINGS OR COMPANY PROVIDED FIELD LOCATIONS. THE PLAN LOCATIONS SHOWN ARE NOT GUARANTEED. ADDITIONAL EXISTING UTILITIES MAY ALSO BE ENCOUNTERED.
- A PORTION OF EXCESS EXCAVATED MATERIAL SHALL BE MOUNDED AROUND MANHOLES WHICH EXTEND MORE THAN ONE (1) FOOT ABOVE THE EXISTING GROUND. SUCH MOUND SHALL BE CONSTRUCTED WITH NEW DEVELOPMENT A SIX (6) FOOT DIAMETER FLAT TOP WITH 4 TO 1 SIDE SLOPES DOWN TO THE ORIGINAL GROUND. THE ELEVATION OF THE FLAT TOP OF THE MOUND SHALL BE 0.4 FOOT BELOW THE TOP OF THE MANHOLE.
- CONTRACTOR SHALL PROVIDE POSITIVE DRAINAGE AWAY FROM ALL MANHOLE COVERS.
- ALL STUBS AND PLUGGED PIPES SHALL BE LOCATED WITH GREEN PLASTIC TAPE IN THE SAME MANNER AS RISERS.
- CONNECTING TO EXISTING MANHOLES:
PRIOR TO LAYING SEWER LINES USING EXISTING STUBS IN EXISTING MANHOLES, THE CONTRACTOR SHALL EXPOSE AND VERIFY THE ELEVATION, GRADE AND ALIGNMENT OF EXISTING STUBS AND NOTIFY THE ENGINEER OF ANY DEVIATION FROM THE PLANS. WHERE CONNECTION TO AN EXISTING MANHOLE THAT DOES NOT HAVE AN EXISTING STUB OR THE STUB IS UNUSABLE DUE TO ELEVATION GRADE OR ALIGNMENT, THE CONTRACTOR SHALL BORE CUT INTO EXISTING MANHOLE WALL TO MAKE CONNECTION USING APPROVED WATER STOP GASKET, AND RESHAPE THE EXISTING MANHOLE INVERT TO PROVIDE SMOOTH FLOW. THE COST TO CONNECTING TO EXISTING MANHOLES IS INCIDENTAL TO THE PROJECT.
- THE CONTRACTOR SHALL PREVENT ANY CONSTRUCTION DEBRIS FROM ENTERING THE EXISTING SANITARY SEWER DURING CONSTRUCTION.
- THE CONTRACTOR SHALL BE RESPONSIBLE FOR MAINTAINING CONTINUOUS FLOW OF SEWAGE THROUGH CONSTRUCTION. CONTRACTOR'S PROPOSED METHOD FOR MAINTAINING SEWAGE FLOW SHALL BE SUBMITTED AND APPROVED BY THE SEWER MAINTENANCE DIVISION (316-268-4073) PRIOR TO STARTING AND BY-PASSING OF SEWAGE FLOWS.
- ALL TRAFFIC CONTROL DEVICES IN THE WORK ZONE (INCLUDING MARKINGS AND SIGNS) AND THEIR INSTALLATION AND MAINTENANCE SHALL COMPLY WITH THE LATEST EDITION OF THE MANUAL ON UNIFORM TRAFFIC CONTROL DEVICES (MUTCD). ALL TRAFFIC CONTROL DEVICES IN THE TRAVELED WAY OR CLEAR ZONE SHALL BE CRASHWORTHY (NCHRP REPORT 350 OR MASH COMPLIANT).
<http://safety.fhwa.dot.gov/roadwaydept/policyguide/roadhardware/wzd>
- ALL CONSTRUCTION EQUIPMENT, INCLUDING VEHICLES, MATERIALS, AND DEBRIS, SHALL BE STORED OUTSIDE OF THE CLEAR ZONE. WHERE THIS CANNOT BE ACHIEVED THE CONTRACTOR SHALL PLACE APPROPRIATE SIGNS, OBJECT IDENTIFIERS, AND/OR BARRICADES IN COMPLIANCE WITH MUTCD.
- EXCEPT WHEN REQUIRED FOR SAFETY, TRAFFIC CONTROL SHALL NOT BLOCK ANY LANES OR SIDEWALKS WHEN WORK IS NOT BEING PERFORMED.
- FOLLOW THE LINK BELOW FOR DETAILS ON SPECIFIC CITY OF WICHITA STANDARD DETAILS:
<http://www.wichita.gov/PWU/Pages/Regulations.aspx>
- CONTRACTOR SHALL WINDROW OR STOCKPILE TOPSOIL ACROSS WIDTH OF UTILITY TRENCHING OPERATIONS FOR PLACEMENT IN FUTURE PROJECT BY OTHERS.
- DEVELOPER FOR THIS PROJECT IS:
COUNTRY HOLLOW, LLC
RITCHIE DEVELOPMENT CORPORATION, MANAGER
8100 E 2ND ST. N. BUILDING 100
WICHITA, KS 67226
KEVIN M. MULLEN
316-684-7300

SANITARY SEWER

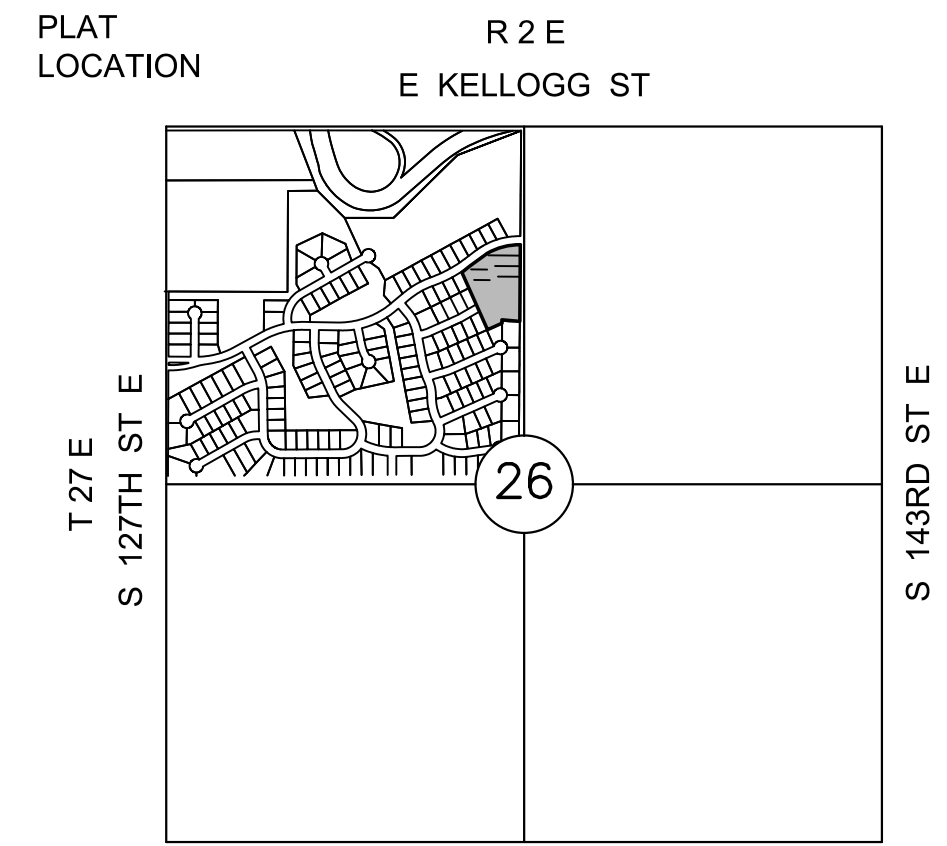
TO SERVE

COUNTRY HOLLOW 2ND ADDITION

ROSE STREET
WICHITA, KS
PROJECT NO. 468-85416
THE CITY OF WICHITA, KANSAS
GARY JANZEN, P.E. - CITY ENGINEER
ORG CODE 47258919
MUNIS NO. E9121

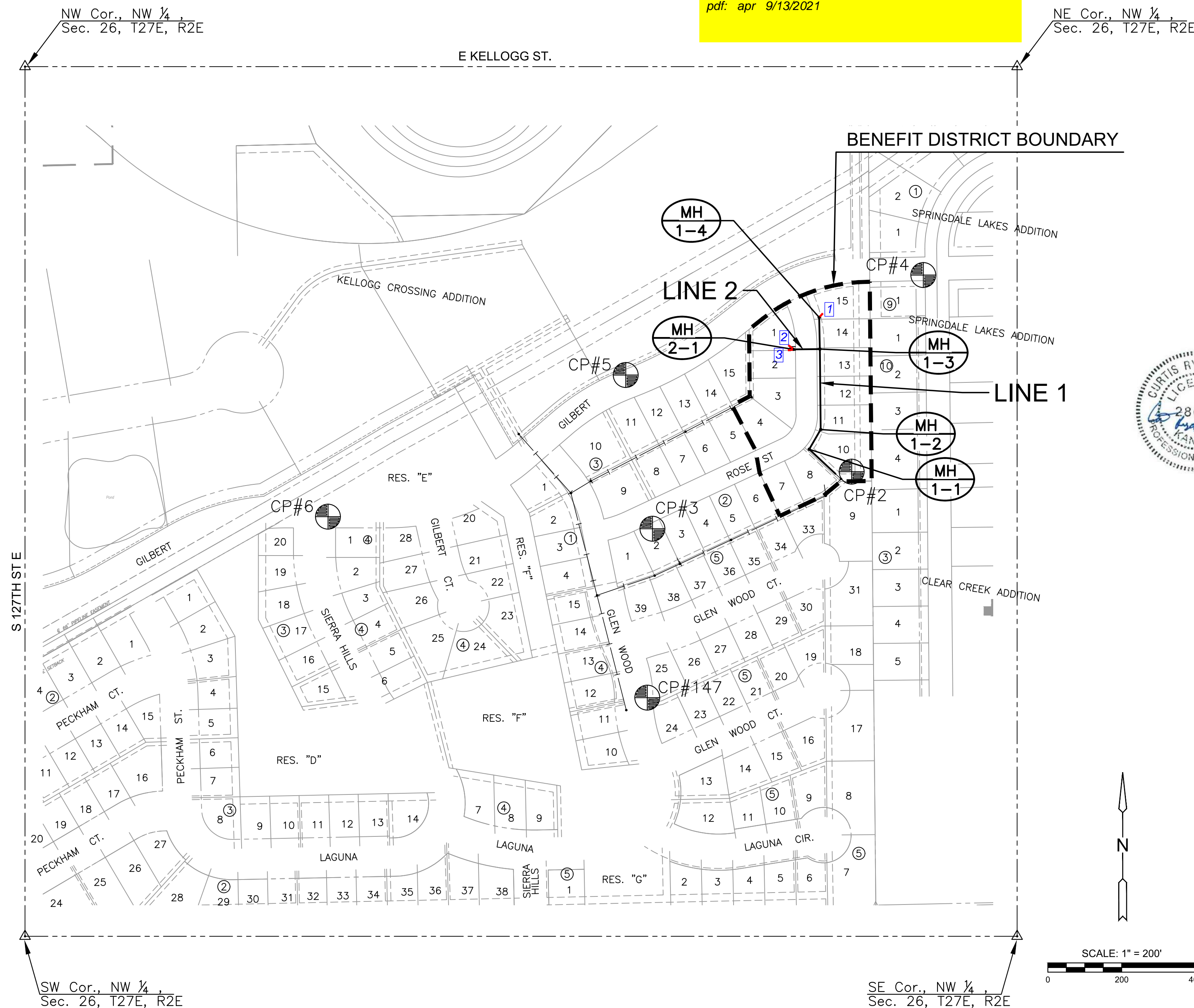
Inspector: Mike VanDeCreek
Contractor: Mies Construction
Superintendent: Albert Williams

K. Yale - City of Wichita, Field Project Engineer
As-built
Risers
Release Date (for connection purposes only): 9/13/2021
Final Acceptance Date: 7/2/2021
Completion Date:
pdf: apr 9/13/2021



VICINITY MAP

No Scale



INDEX TO DRAWINGS

SHEET NO.	DESCRIPTION
01	TITLE SHEET
02-04	DETAILS
05	LINE 1 & 2
06	BUBBLE MAP
07-11	BMP SHEETS
12	FINAL PLAT

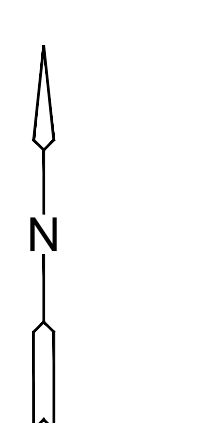
CONTROL POINTS

DATUM:
THE HORIZONTAL DATUM IS BASED ON THE KANSAS COORDINATE SYSTEM OF 1983(2011), SOUTH ZONE. COORDINATES SHOWN HAVE BEEN MODIFIED TO THE GROUND USING A COMBINED ADJUSTMENT FACTOR OF 1.0001200144.
ALL ELEVATIONS SHOWN ARE BASED ON THE NAVD 88 VERTICAL DATUM.

CONTROL POINTS:

CP2-PH 1 N:1682513.937 E:1694380.13 5/8 BAR 2" ALUM MKEC CAP	EL:1338.1
CP3-PH 1. N:1682359.995 E:1693840.826 5/8 BAR 2" ALUM MKEC CAP	EL:1335.39
CP4 -PH 1 & 2. N:1683046.711 E: 1694574.106 CHISELED "X"	EL:1325.059
CP5 -PH 1. N:1682775.750 E:1693768.393 5/8 BAR MKEC CLS39 CAP	EL:1336.853
CP6 - PH 1 & 2. N:1682391.904 E:1692962.388 CHISELED "X"	EL:1338.797
CP147 - PH 1. N:1681902.856 E:1693826.772 5/8 BAR 2" ALUM MKEC CAP	EL:1330.88

NOTE:
ALL CONTROL POINTS SHOWN HAVE ELEVATIONS ESTABLISHED BY DIFFERENTIAL LEVELING AND CAN BE USED AS TEMPORARY BENCHMARKS. WHEN USING A CONTROL POINT AS A TEMPORARY BENCHMARK, IT IS RECOMMENDED THAT CROSS-CHECKS BE MADE TO OTHER CONTROL POINTS OR BENCHMARKS TO CONFIRM ELEVATIONS PRIOR TO USE.



SANITARY SEWER PLANS FOR
COUNTRY HOLLOW 2ND ADDITION
 PHASE 2

©2021
MKEC Engineering
All Rights Reserved
www.mkec.com
These drawings and their contents, including, but not limited to, all concepts, designs, & ideas are the exclusive property of MKEC Engineering (MKEC), and may not be used or reproduced in any way without the express consent of MKEC.

TITLE SHEET

PROJECT NO.	468-85416	
DATE	MAR. 2021	
SCALE	1"=200'	
DESIGNED	CRM	
DRAWN	CRM	
CHECKED	DFL	
NO.	REVISION	DATE
SHEET NO. 01 OF 12		

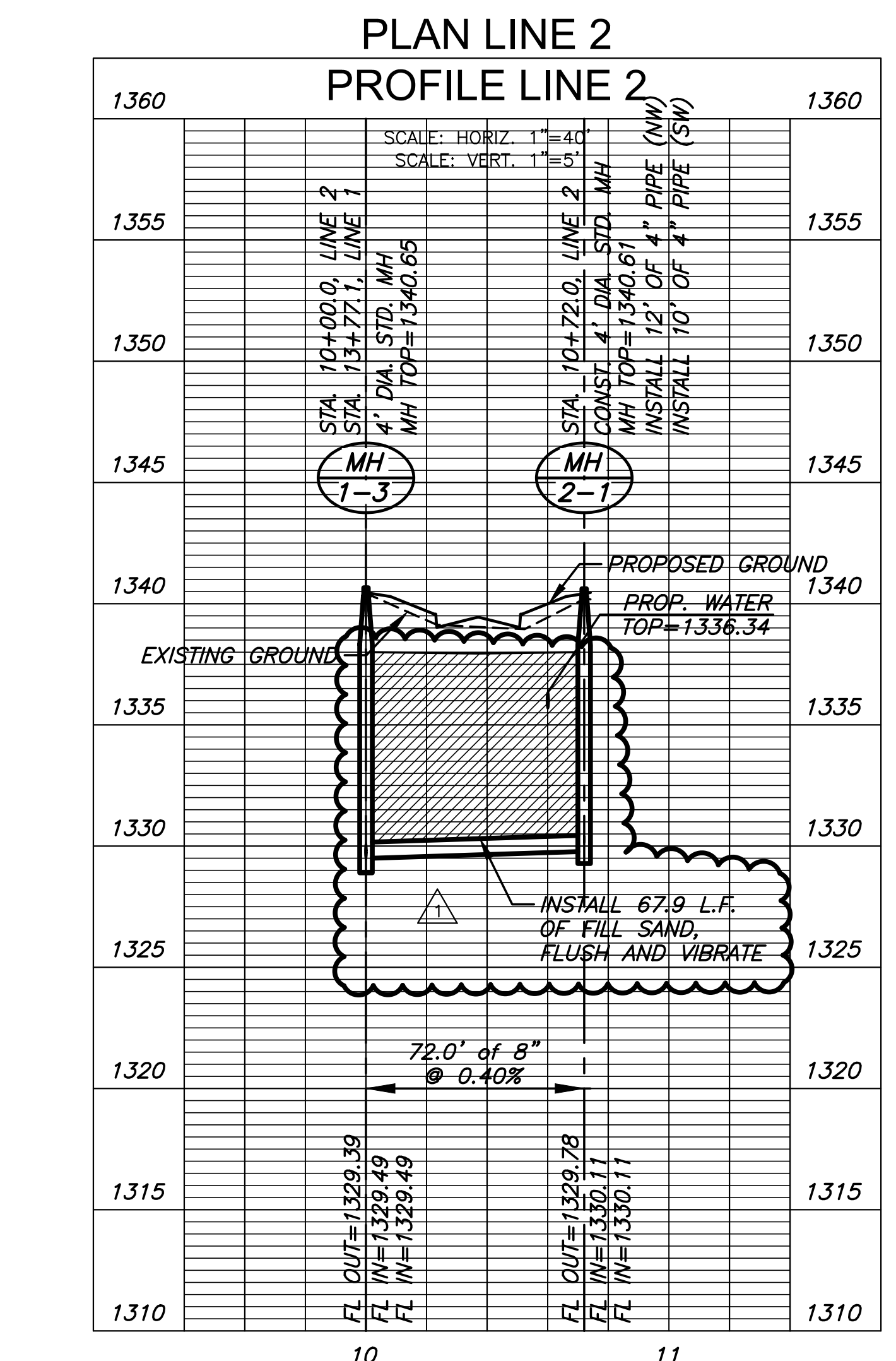
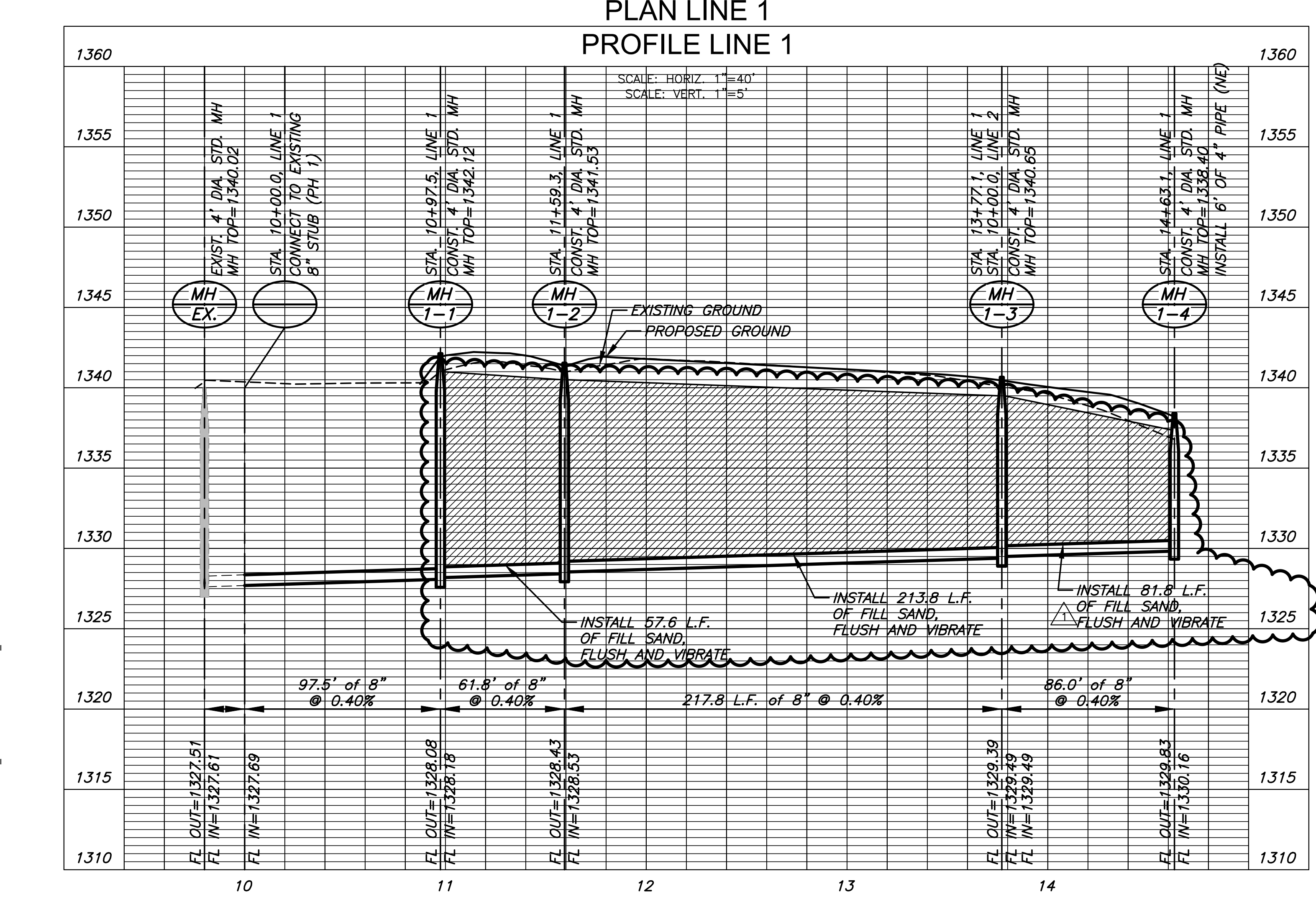
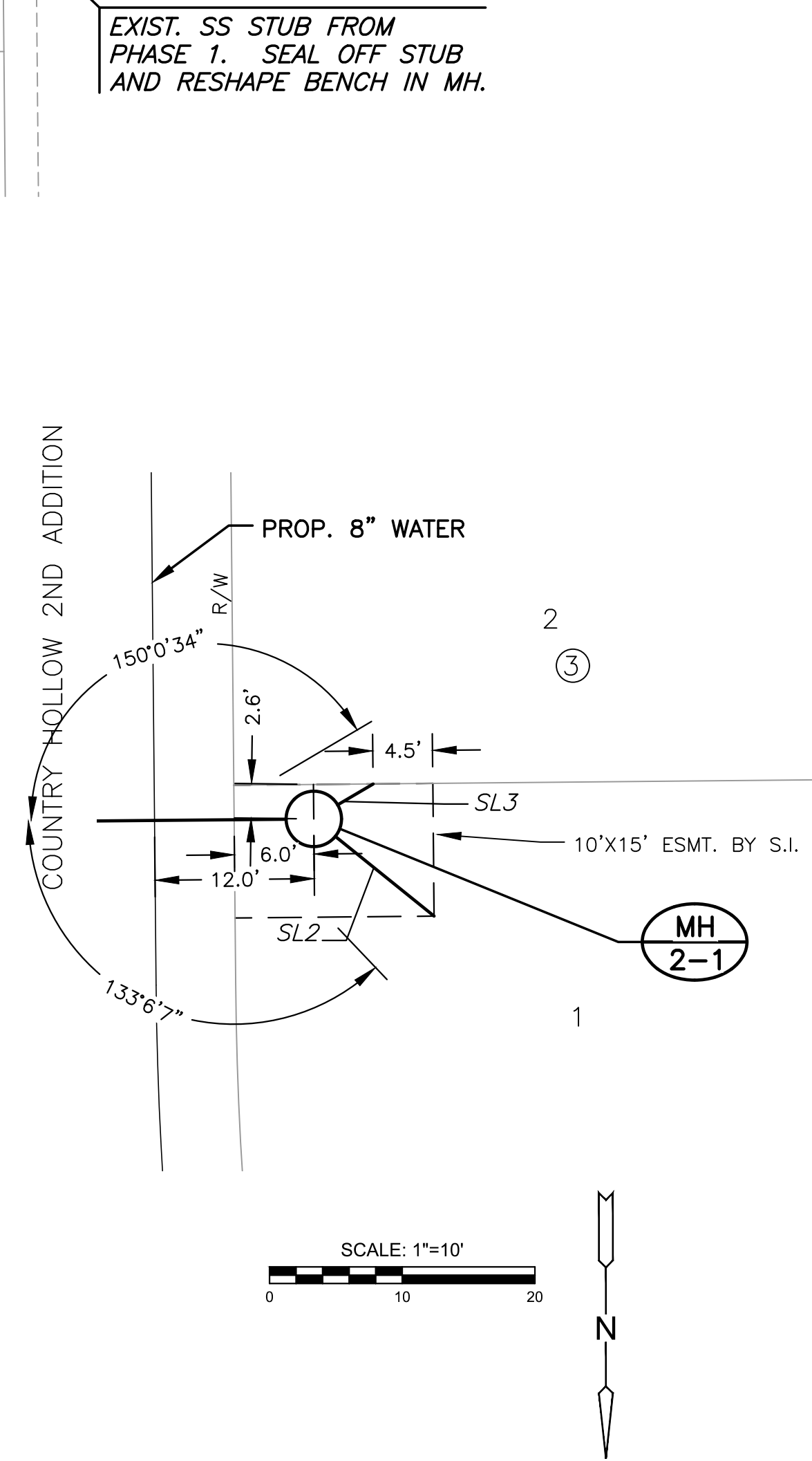
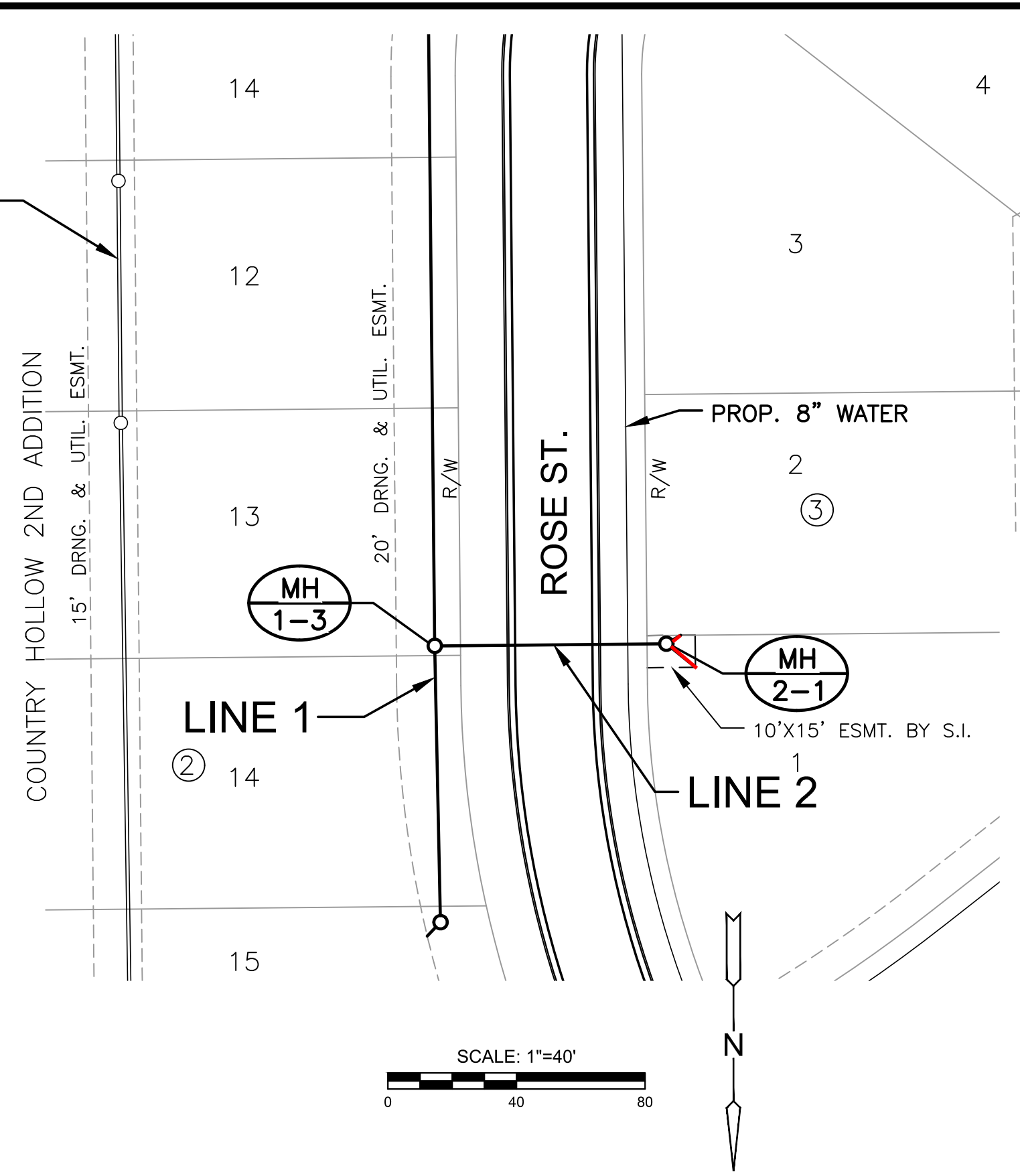
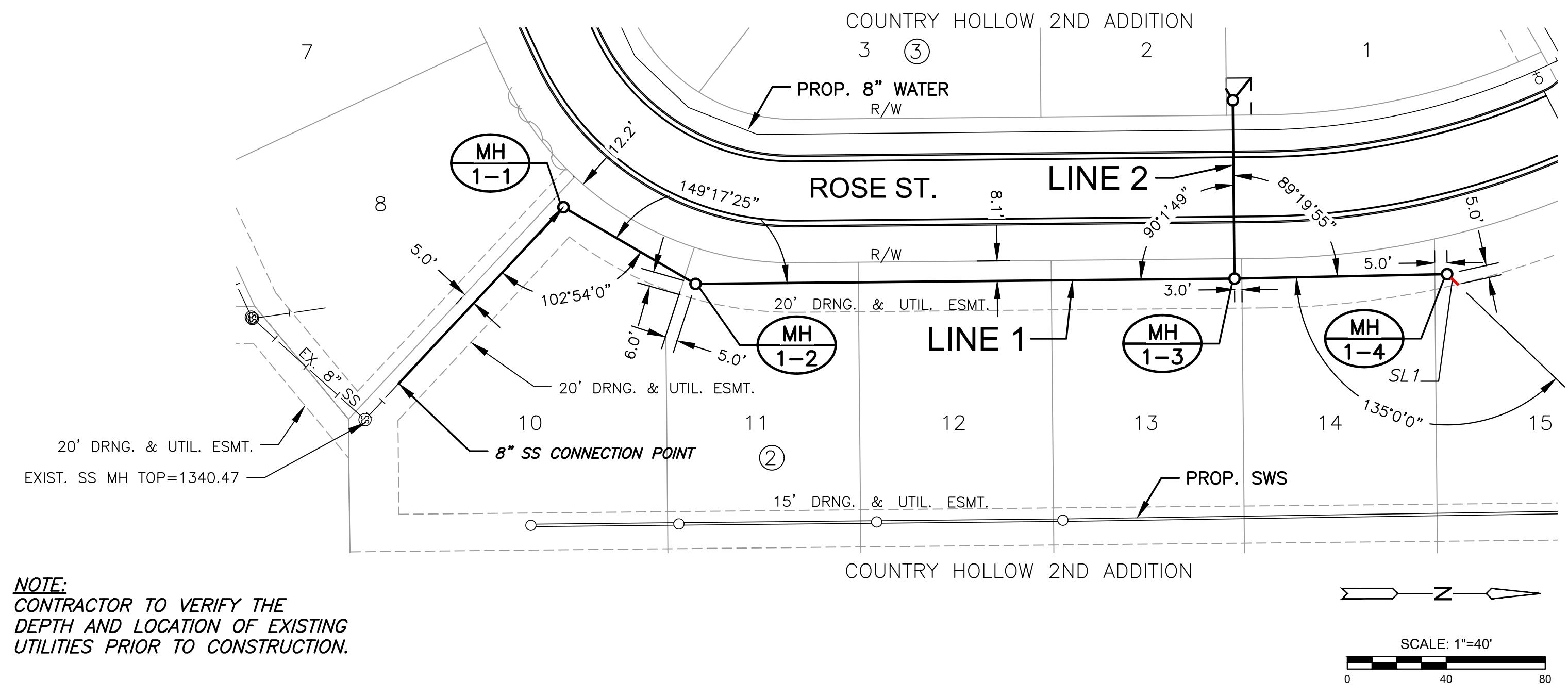
As-built
2021-08-23

©2021 MKEC Engineering
All Rights Reserved
www.mkec.com
These drawings and their contents, including, but not limited to, all concepts, designs, & ideas are the exclusive property of MKEC Engineering (MKEC), and may not be used or reproduced in any way without the express consent of MKEC.

LINE 1 & 2

PROJECT NO.	468-85416
DATE	MAR. 2021
SCALE	1"=40'
DESIGNED	CRM
DRAWN	CRM
CHECKED	DFL
NO.	1
REVISION	ADDED SAND/FLUSH
DATE	04/07/21

SEWER SERVICE RISER TABLE					FOR INFORMATION ONLY		DISTANCE FROM		
NO.	TYPE	LOCATION			DIRECTION	APPROXIMATE LENGTH		UPSTREAM MH	DOWNSTREAM MH
		LOT NO.	BLOCK NO.	LINE NO.		VERTICAL (FT)	HORIZONTAL (FT)		
SL1	4" MH CONNECTION	15	2	1	14+63/RT.	8'	5'	@ MH	@ MH
SL2	4" MH CONNECTION	1	3	2	10+72/RT.	10'	12'	@ MH	@ MH
SL3	4" MH CONNECTION	1	3	2	10+72/LT.	10'	10'	@ MH	@ MH



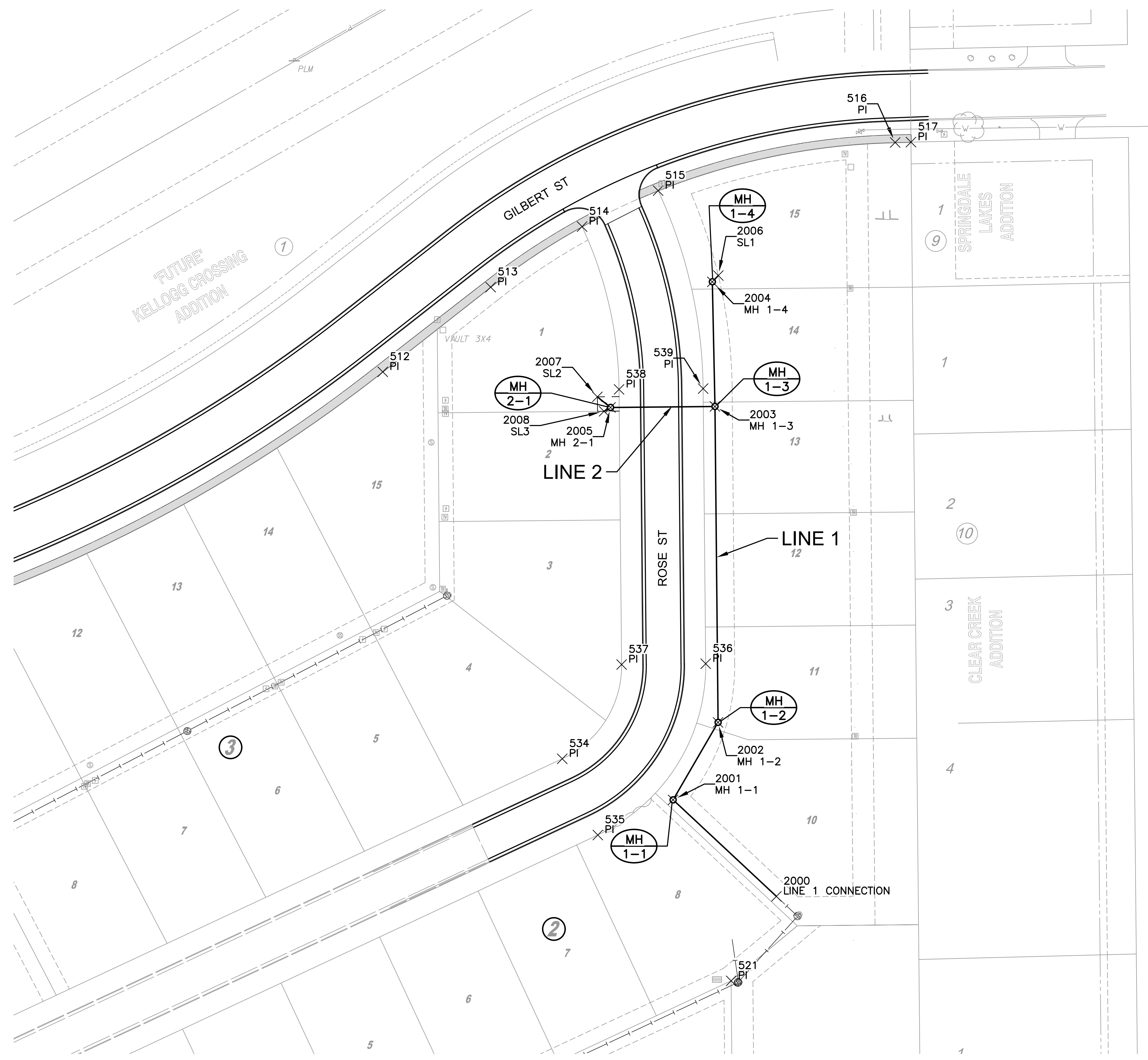
NOTE:
COST FOR FILL SAND, FLUSH AND VIBRATE TO BE SUBSIDIARY TO THE PROJECT.



As-built
2021-08-23

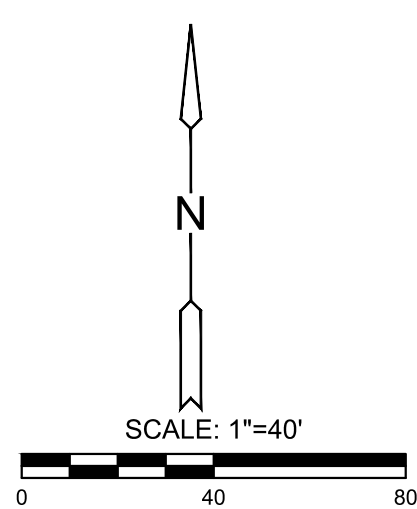
J:\PROJECTS\2018\18010519_COUNTRY HOLLOW 2ND_18519 CAD\SHOTS\05 CIVIL\SANPHASE 2\18519-05-2200.DWG
 PLOTTED: Wednesday, April 07, 2021 @ 09:29AM

J:\PROJECTS\2018\1801010519_COUNTRY HOLLOW 2ND_18519 CAD\SHOTS\05 CIVIL\SANPHASE 2\18519-05-2500.DWG
 PLOTTED: Sunday, March 21, 2021 @ 08:31PM



PLAT POINTS			
Point #	Northing	Easting	Desc.
506	1682478.6431	1693456.2161	PI
507	1682523.0440	1693514.4829	PI
508	1682545.0210	1693539.9360	PI
509	1682586.8469	1693588.3776	PI
510	1682614.4322	1693620.3262	PI
511	1682715.9394	1693791.0076	PI
512	1682870.1441	1694064.6641	PI
513	1682928.5473	1694139.0702	PI
514	1682970.2921	1694202.1551	PI
515	1682995.0839	1694254.5899	PI
516	1683028.3036	1694418.0957	PI
517	1683028.5351	1694428.9975	PI
518	1682272.1891	1694436.3435	PI
519	1682271.3521	1694346.6145	PI
520	1682319.9666	1694306.1592	PI
521	1682450.2660	1694304.9437	PI
522	1682201.6872	1693746.0334	PI
523	1682216.1688	1693743.0799	PI
524	1682203.3793	1693680.3708	PI
525	1682177.4007	1693552.9930	PI
526	1682402.7615	1693507.0308	PI
527	1682490.7199	1693586.8211	PI
528	1682532.5459	1693635.2627	PI
529	1682385.9017	1693708.4375	PI
530	1682369.1298	1693646.5661	PI
531	1682329.0651	1693720.0548	PI
532	1682352.0572	1693787.5197	PI
533	1682404.6066	1693762.9726	PI
534	1682603.3571	1694188.4660	PI
535	1682550.8074	1694213.0123	PI
536	1682668.8886	1694287.4123	PI
537	1682668.3476	1694229.4149	PI
538	1682858.0520	1694227.6452	PI
539	1682858.5931	1694285.6427	PI

SANITARY POINTS			
Point #	Northing	Easting	Desc.
2000	1682508.4930	1694336.1856	LINE 1 CONNECTION
2001	1682575.0445	1694264.8961	MH 1-1
2002	1682628.4566	1694295.9143	MH 1-2
2003	1682846.2657	1694293.7677	MH 1-3
2004	1682932.2194	1694291.9636	MH 1-4
2005	1682845.5937	1694221.7612	MH 2-1
2006	1682936.5251	1694296.1269	SL1
2007	1682852.9123	1694212.6925	SL2
2008	1682842.9547	1694217.2856	SL3



As-built
2021-08-23



SANITARY SEWER PLANS FOR
COUNTRY HOLLOW 2ND ADDITION
 PHASE 2

©2021 MKEC Engineering All Rights Reserved
 These drawings and their contents, including, but not limited to, all concepts, designs, & ideas are the exclusive property of MKEC Engineering (MKEC), and may not be used or reproduced in any way without the express consent of MKEC.

BUBBLE MAP

PROJECT NO.	468-85416	
DATE	MAR. 2021	
SCALE	1"=40'	
DESIGNED	CRM	
DRAWN	CRM	
CHECKED	DFL	
NO.	REVISION	DATE

SHEET NO.
06 OF 12