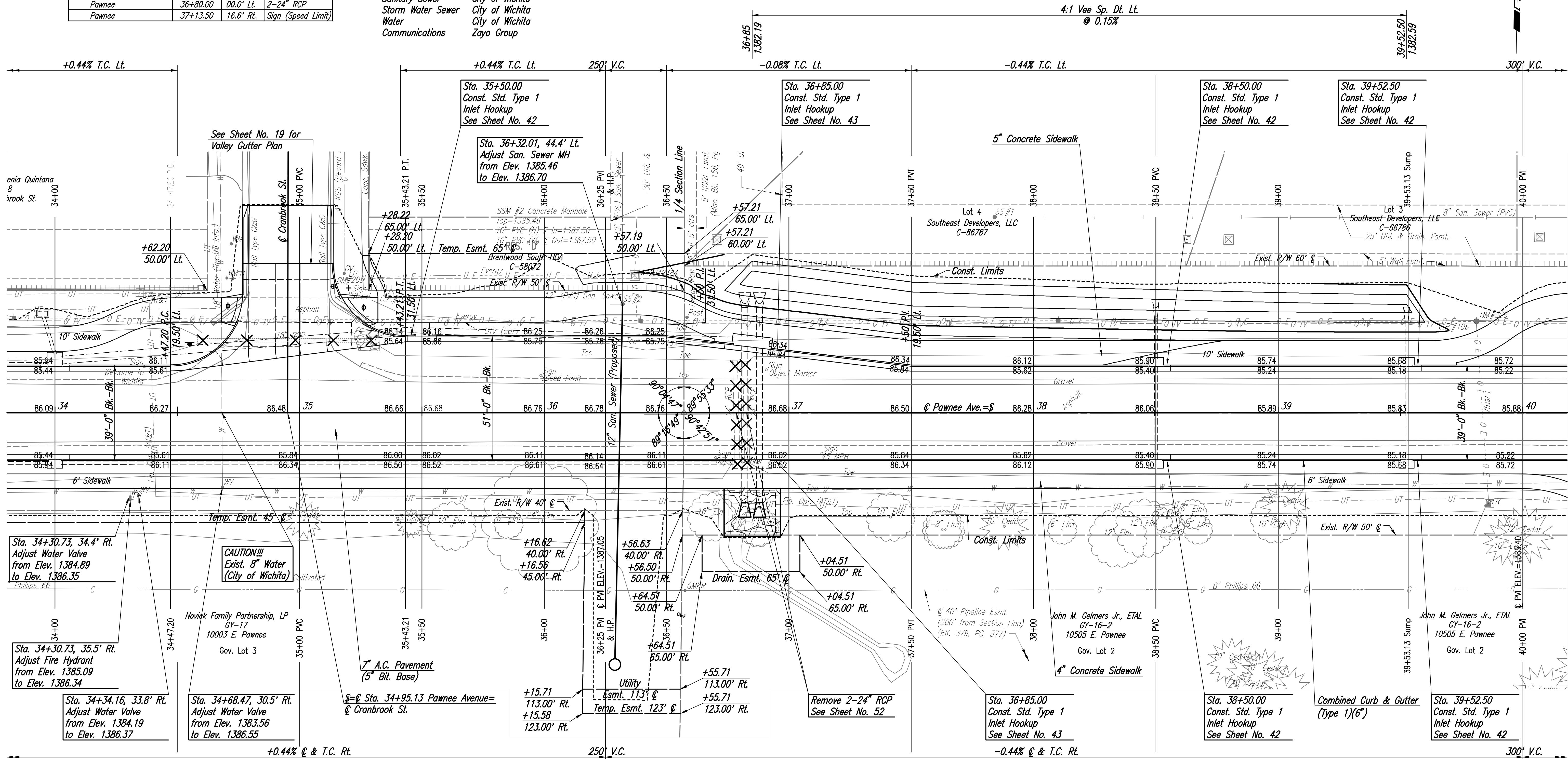


REMOVAL OF STRUCTURES (INFORMATION ONLY)

ALIGNMENT	STATION	SIDE	DESCRIPTION
Pawnee	34+36.50	18.8' Lt.	Sign (Welcome)
Pawnee	34+95.13	29.6' Lt.	18" RCP
Pawnee	35+28.00	Lt.	RIPRAP
Pawnee	35+98.50	15.2' Lt.	Sign (Speed Limit)
Pawnee	36+80.00	00.0' Lt.	2-24" RCP
Pawnee	37+13.50	16.6' Rt.	Sign (Speed Limit)

UTILITIES CONTACTS

Power Butler REC
 Power Evergy
 Gas Kansas Gas Service
 Gas Phillips 66 Pipeline, LLC
 Telephone AT&T
 Cable TV Cox Communications
 Sanitary Sewer City of Wichita
 Storm Water Sewer City of Wichita
 Water City of Wichita
 Communications Zayo Group



Sta. 34+30.73, 34.4' Rt. Adjust Water Valve from Elev. 1384.89 to Elev. 1386.35

Sta. 34+30.73, 35.5' Rt. Adjust Fire Hydrant from Elev. 1385.09 to Elev. 1386.34

Sta. 34+34.16, 33.8' Rt. Adjust Water Valve from Elev. 1384.19 to Elev. 1386.37

Sta. 34+68.47, 30.5' Rt. Adjust Water Valve from Elev. 1383.56 to Elev. 1386.55

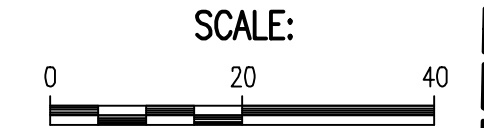
Sta. 34+95.13 Pawnee Avenue = Cranbrook St.

CAUTION!!!
 Exist. 8" Water (City of Wichita)

LEGEND
 ◊ CONSTRUCT 10' STD. WHEELCHAIR RAMP (TYPE A), SEE SHEET NO. 24.

- North 1/4 Corner Section 4, T28S, R2E
 N: 1,672,973.87 E: 1,683,768.35
- Found 5/8" Rebar with Garber Cap, 0.2 ft. deep
 - To Nail and Shiner in East face of power pole.
 - To SE corner of concrete pad for house patio.
 - To top-center of fire hydrant on West side Cranbrook Street.
 - To 3 Nails in South face of treated East brace post.
 - To 60d Nail in West face of hedge fence corner post, 1' high.
 - To Chiseled cross in North face of gas line marker post.
 - To top-center of fire hydrant.

- 41.60' NNW
- 97.13' NNW
- 192.43' NNW
- 44.71' NE
- 40.18' S
- 72.53' S
- 228.73' WSW



Sowed 04-09-2021 4:57:54 PM by: AGRISTY/SKAGCS
 Plot Scale 1:1 07-09-2021 2:16:30 PM by: BJS
 U:\wchita-civil\2017\17395\001\main-trans\Drawings\171395-001-10C-PAWNEE-34+00 TO 40+00

Revision		By		Date	
No.					
PAWNEE AVENUE FROM WEBB TO GREENWICH PAVING AND INCIDENTAL DRAINAGE IMPROVEMENTS PAWNEE-34+00 TO 40+00 GARY JANZEN, P.E.—CITY ENGINEER CITY OF WICHITA PROJECT NO. 472-85434					
PROFESSIONAL ENGINEERING CONSULTANTS, P.A. 303 SOUTH TOPEKA WICHITA, KS 67202 316-262-2691 www.pec1.com					
Designed by	RJS	Job No.	171395-002	Sht. 10 of 134	
Drawn by	BJS, CP	Date	APRIL 2021		