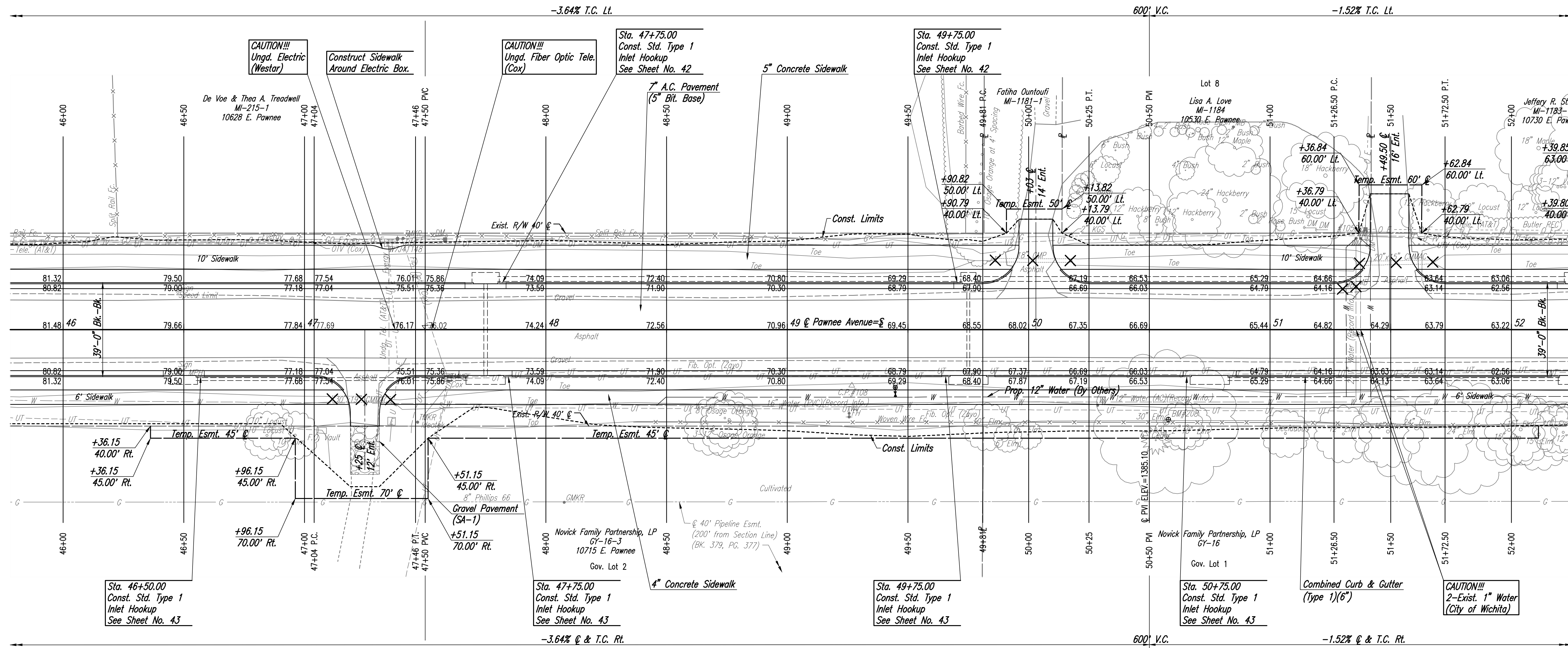
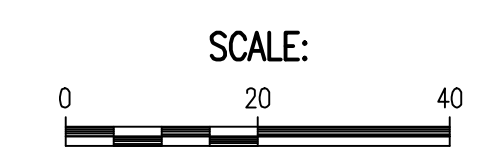


UTILITIES CONTACTS

Power **Butler REC**
 Power **Evergy**
 Gas **Kansas Gas Service**
 Gas **Philips 66 Pipeline, LLC**
 Telephone **AT&T**
 Cable TV **Cox Communications**
 Sanitary Sewer **City of Wichita**
 Storm Water Sewer **City of Wichita**
 Water **City of Wichita**
 Communications **Zayo Group**

REMOVAL OF STRUCTURES (INFORMATION ONLY)			
ALIGNMENT	STATION	SIDE	DESCRIPTION
Pawnee	46+47.50	15.4' Lt.	Sign (Speed Limit)
Pawnee	50+03.00	28.7' Lt.	18" CMP
Pawnee	51+49.50	27.7' Lt.	20" x 15" CMMAC
Pawnee	46+46.90	16.3' Rt.	Sign (Speed Limit)
Pawnee	47+25.00	28.9' Rt.	30" x 19" CMMAC



Served 07-09-2021 3:28:13 PM by BLS SEASON
 Plot Scale 1:1 07-09-2021 3:35:53 PM by BLS
 U:\wchita-civil\2017\171395\001\muni-trans\Drawings\171395-001-12C-PAWNEE-46+00 TO 52+00

24168
07/10/2021
KANSAS
PROFESSIONAL ENGINEER

No.	Revision	By	Date

**PAWNEE AVENUE FROM WEBB TO GREENWICH
 PAVING AND INCIDENTAL DRAINAGE IMPROVEMENTS**

PAWNEE-46+00 TO 52+00

GARY JANZEN, P.E.-CITY ENGINEER
 CITY OF WICHITA PROJECT NO. 472-85434

PROFESSIONAL ENGINEERING CONSULTANTS, P.A.
 303 SOUTH TOPEKA WICHITA, KS 67202
 316-262-2891 www.pec1.com

Designed by RJS	Job No. 171395-002	Sht. 12 of 134
Drawn by BJS, CP	Date APRIL 2021	