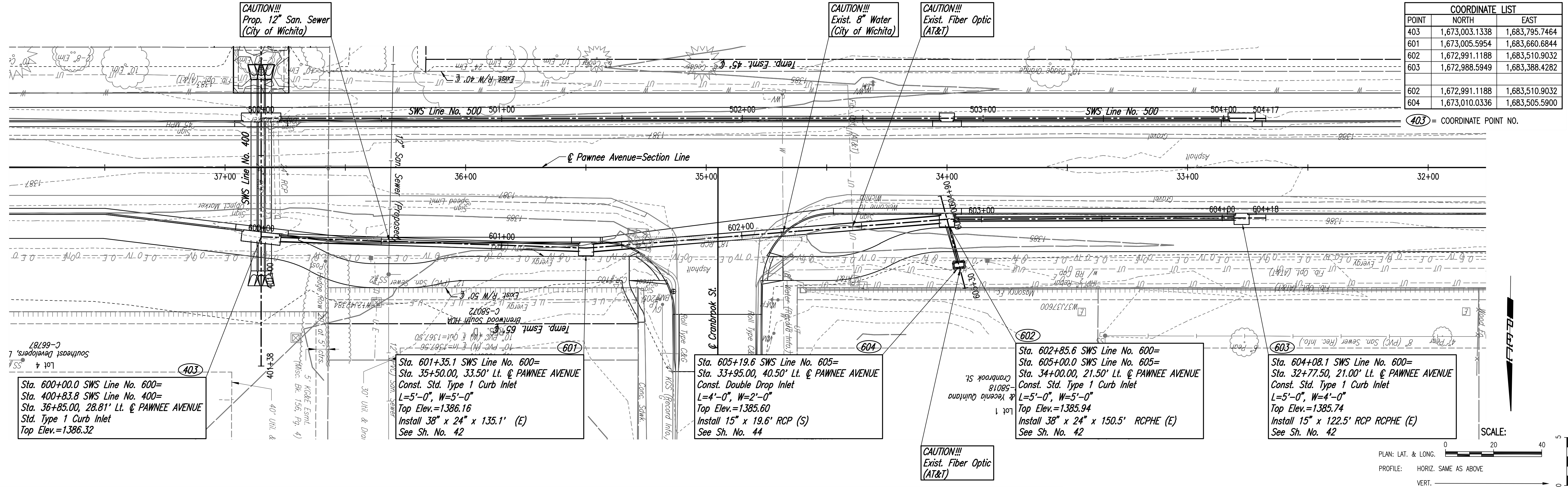


CHECKED  
DATE

CHECKED  
DATE

Saved: 03-18-2021 9:19:36 AM by BILL SEASON  
Plot Scale 1:1 07-09-2021 2:23:23 PM by BUS  
U:\wchita-civil\2017\171395\001\Drawings\171395-001-34C-SWS Line No. 600



COORDINATE LIST		
POINT	NORTH	EAST
403	1,673,003.1338	1,683,795.7464
601	1,673,005.5954	1,683,660.6844
602	1,672,991.1188	1,683,510.9032
603	1,672,988.5949	1,683,388.4282
602	1,672,991.1188	1,683,510.9032
604	1,673,010.0336	1,683,505.5900

(403) = COORDINATE POINT NO.

Sta. 600+00.0 SWS Line No. 600=  
Sta. 400+83.8 SWS Line No. 400=  
Sta. 36+85.00, 28.81' Lt. @ PAWNEE AVENUE  
Std. Type 1 Curb Inlet  
Top Elev.=1386.32

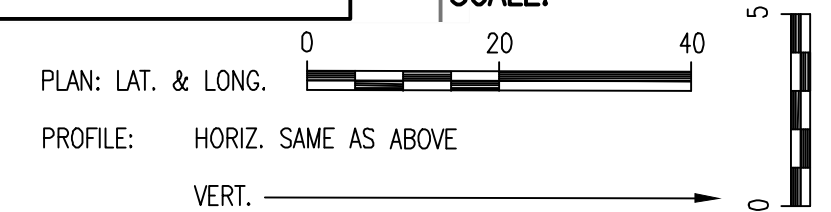
Sta. 601+35.1 SWS Line No. 600=  
Sta. 35+50.00, 33.50' Lt. @ PAWNEE AVENUE  
Const. Std. Type 1 Curb Inlet  
L=5'-0", W=5'-0"  
Top Elev.=1386.16  
Install 38" x 24" x 135.1' (E)  
See Sh. No. 42

Sta. 605+19.6 SWS Line No. 605=  
Sta. 33+95.00, 40.50' Lt. @ PAWNEE AVENUE  
Const. Double Drop Inlet  
L=4'-0", W=2'-0"  
Top Elev.=1385.60  
Install 15" x 19.6' RCP (S)  
See Sh. No. 44

Sta. 602+85.6 SWS Line No. 600=  
Sta. 605+00.0 SWS Line No. 605=  
Sta. 34+00.00, 21.50' Lt. @ PAWNEE AVENUE  
Const. Std. Type 1 Curb Inlet  
L=5'-0", W=5'-0"  
Top Elev.=1385.94  
Install 38" x 24" x 150.5' RCPHE (E)  
See Sh. No. 42

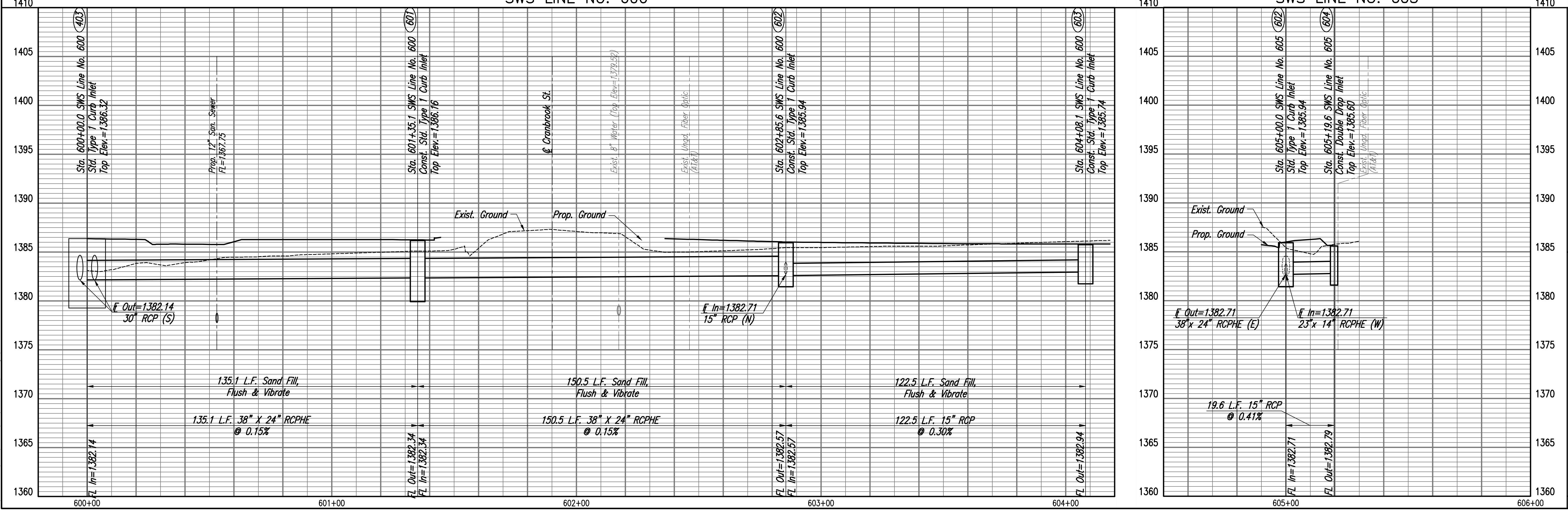
Sta. 604+08.1 SWS Line No. 600=  
Sta. 32+77.50, 21.00' Lt. @ PAWNEE AVENUE  
Const. Std. Type 1 Curb Inlet  
L=5'-0", W=4'-0"  
Top Elev.=1385.74  
Install 15" x 122.5' RCP RCPHE (E)  
See Sh. No. 42

CAUTION!!!  
Exist. Fiber Optic  
(AT&T)



SWS LINE NO. 600

SWS LINE NO. 605



PAWNEE AVENUE FROM WEBB TO GREENWICH  
PAVING AND INCIDENTAL DRAINAGE IMPROVEMENTS  
**SWS LINE NOS. 600 & 605**

PROFESSIONAL ENGINEERING CONSULTANTS P.A.  
308 SOUTH TOPEKA WICHITA, KS 67202  
316-262-2691 www.pec.com

**PEC**  
Designed by RUS  
Drawn by BUS, CP

Job No. 171395-002  
Date APRIL 2021  
Sheet 34 of 134

GARY JANZEN, P.E.-CITY ENGINEER  
CITY OF WICHITA PROJECT NO. 472-85434