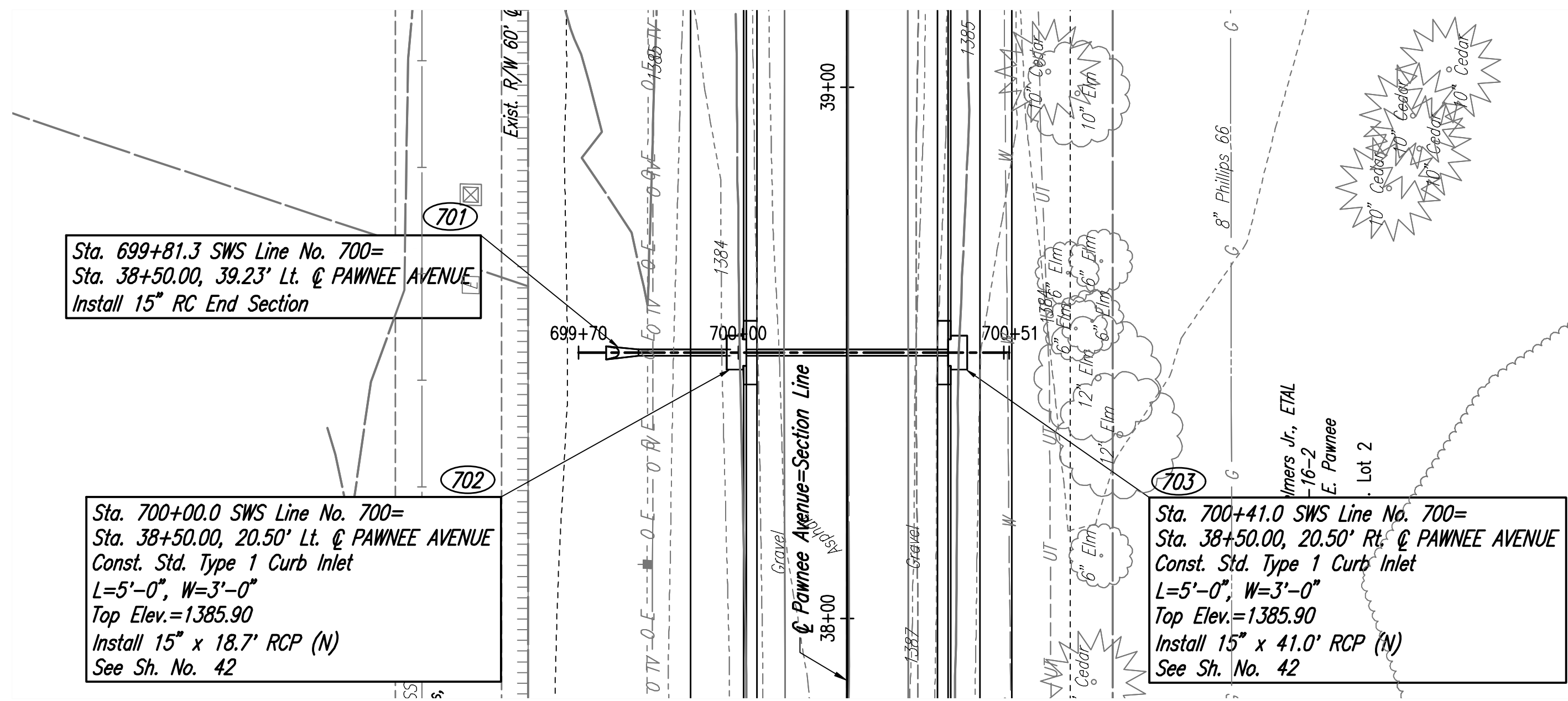


CHECKED	BY	DATE
CHECKED		

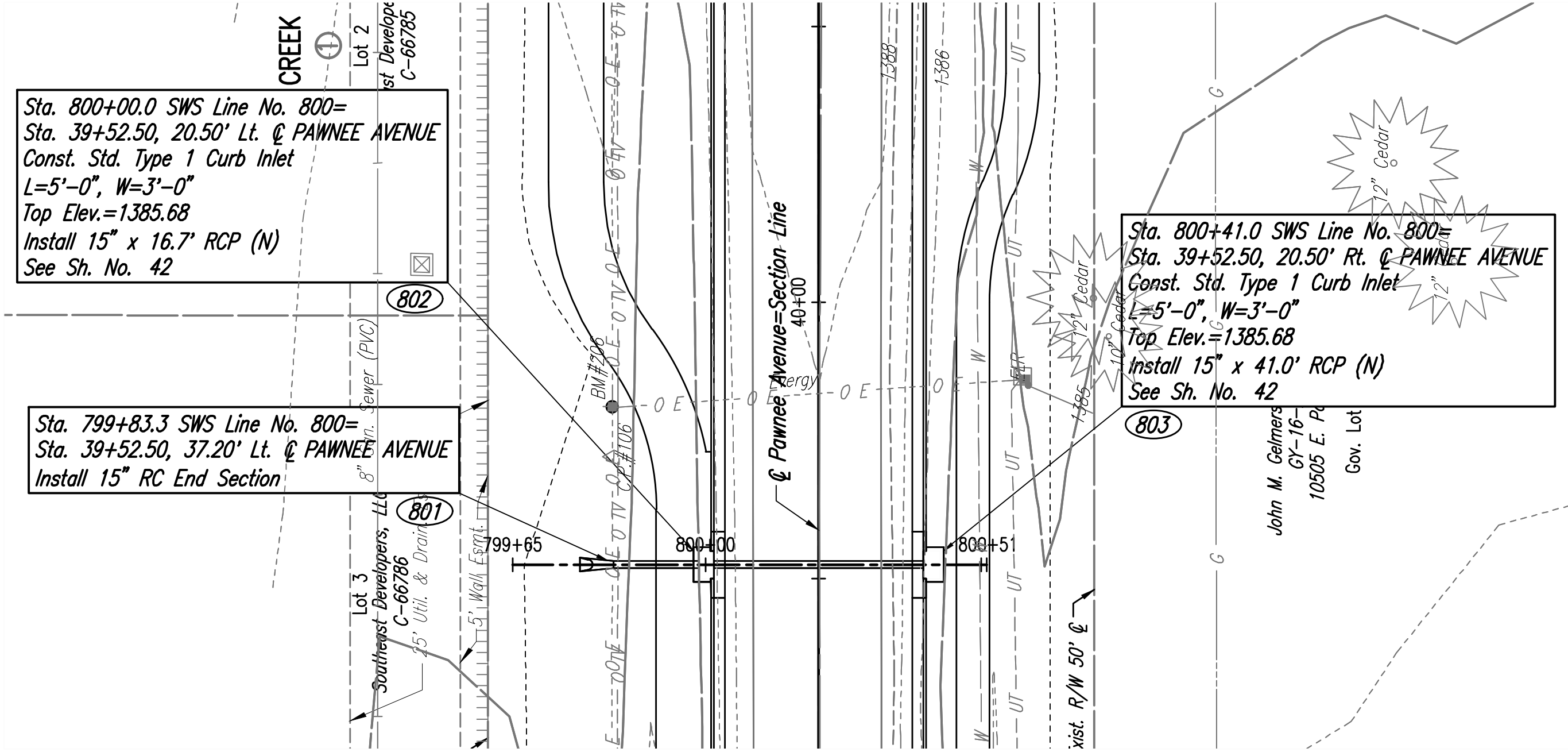
CHECKED	BY	DATE
CHECKED		

Saved: 04-06-2021 9:42:33 AM by: KRSYS/SKAGGS  
 Plot Scale: 1" = 40' - 09" - 2021 2:23:51 PM by: BUS  
 U:\wchita-civil\2017\171395-001\Drawings\171395-001-35C-SWS Line No. 700 & 800



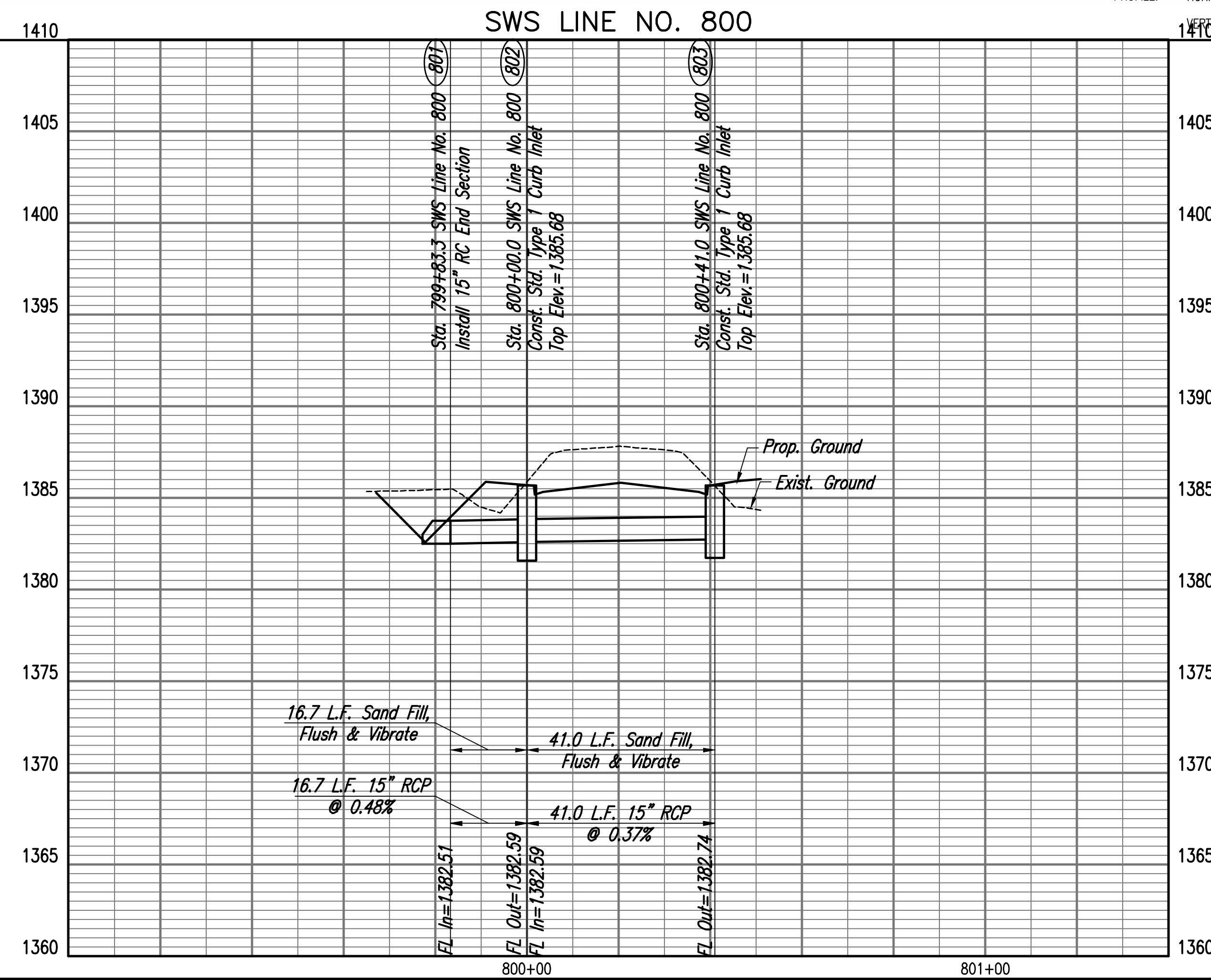
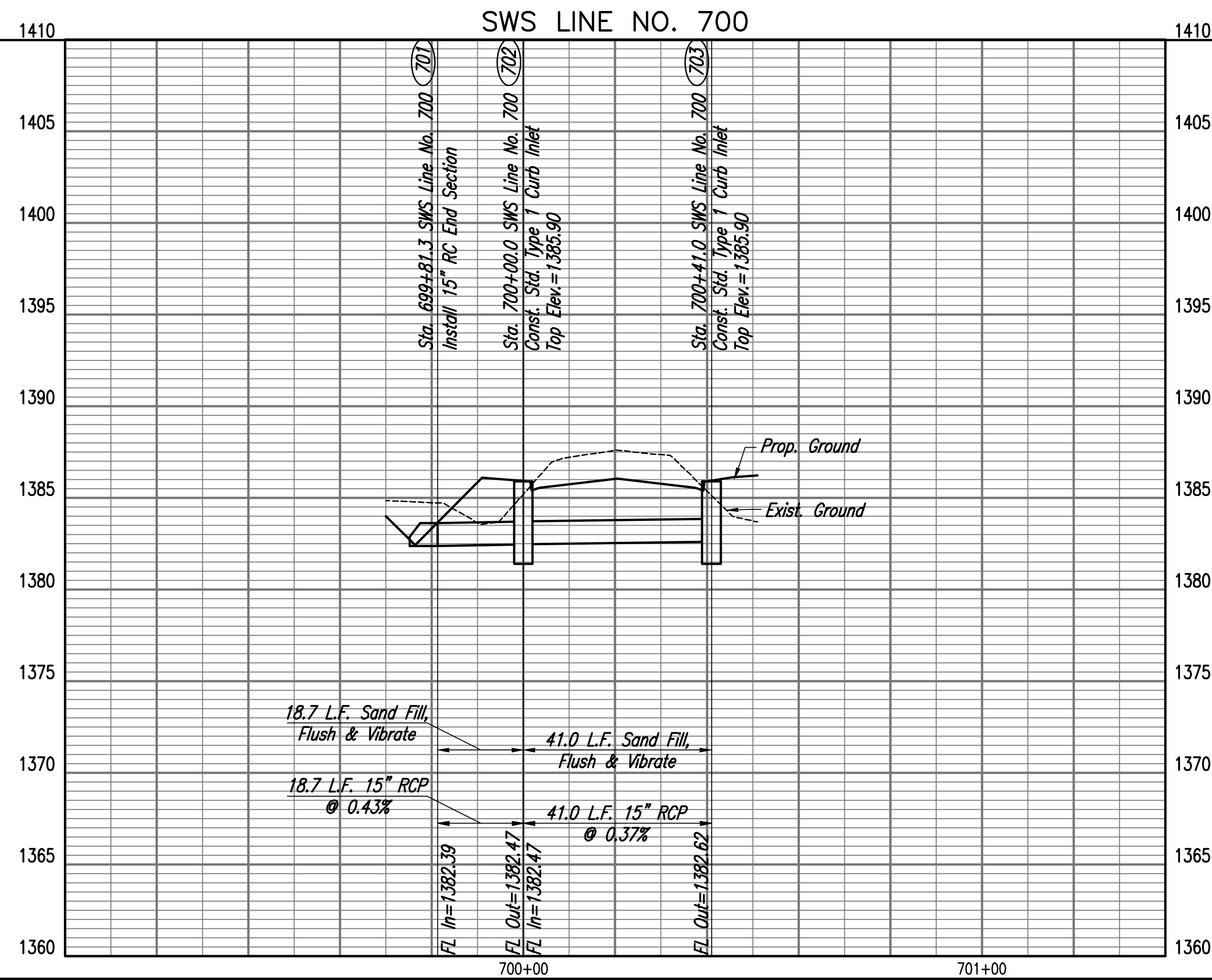
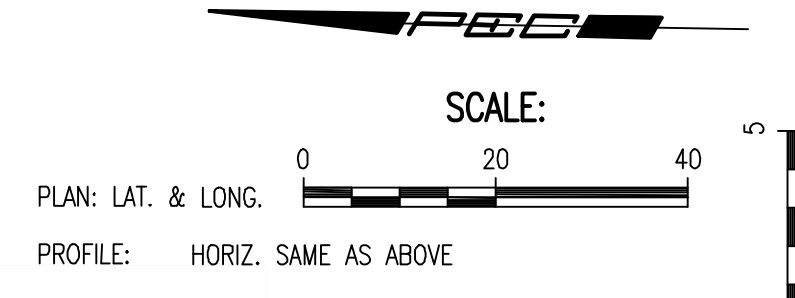
COORDINATE LIST		
POINT	NORTH	EAST
701	1,673,016.2649	1,683,960.5535
702	1,672,997.5349	1,683,960.8606
703	1,672,956.5404	1,683,961.5340

(701) = COORDINATE POINT NO.



COORDINATE LIST		
POINT	NORTH	EAST
801	1,673,015.9160	1,684,063.0725
802	1,672,999.2183	1,684,063.3468
803	1,672,958.2238	1,684,064.0202

(801) = COORDINATE POINT NO.



PAWNEE AVENUE FROM WEBB TO GREENWICH  
 PAVING AND INCIDENTAL DRAINAGE IMPROVEMENTS  
**SWS LINE NOS. 700 & 800**  
 GARY JANZEN, P.E. - CITY ENGINEER  
 CITY OF WICHITA PROJECT NO. 472-85434

PROFESSIONAL ENGINEERING CONSULTANTS P.A.  
 308 SOUTH TOPEKA WICHITA, KS 67202  
 316-262-2681 www.pec1.com

**PEEC**

Designed By: RJS Date: 171395-002  
 Drawn By: BUS, CP APRIL 2021

Sheet 35 of 134