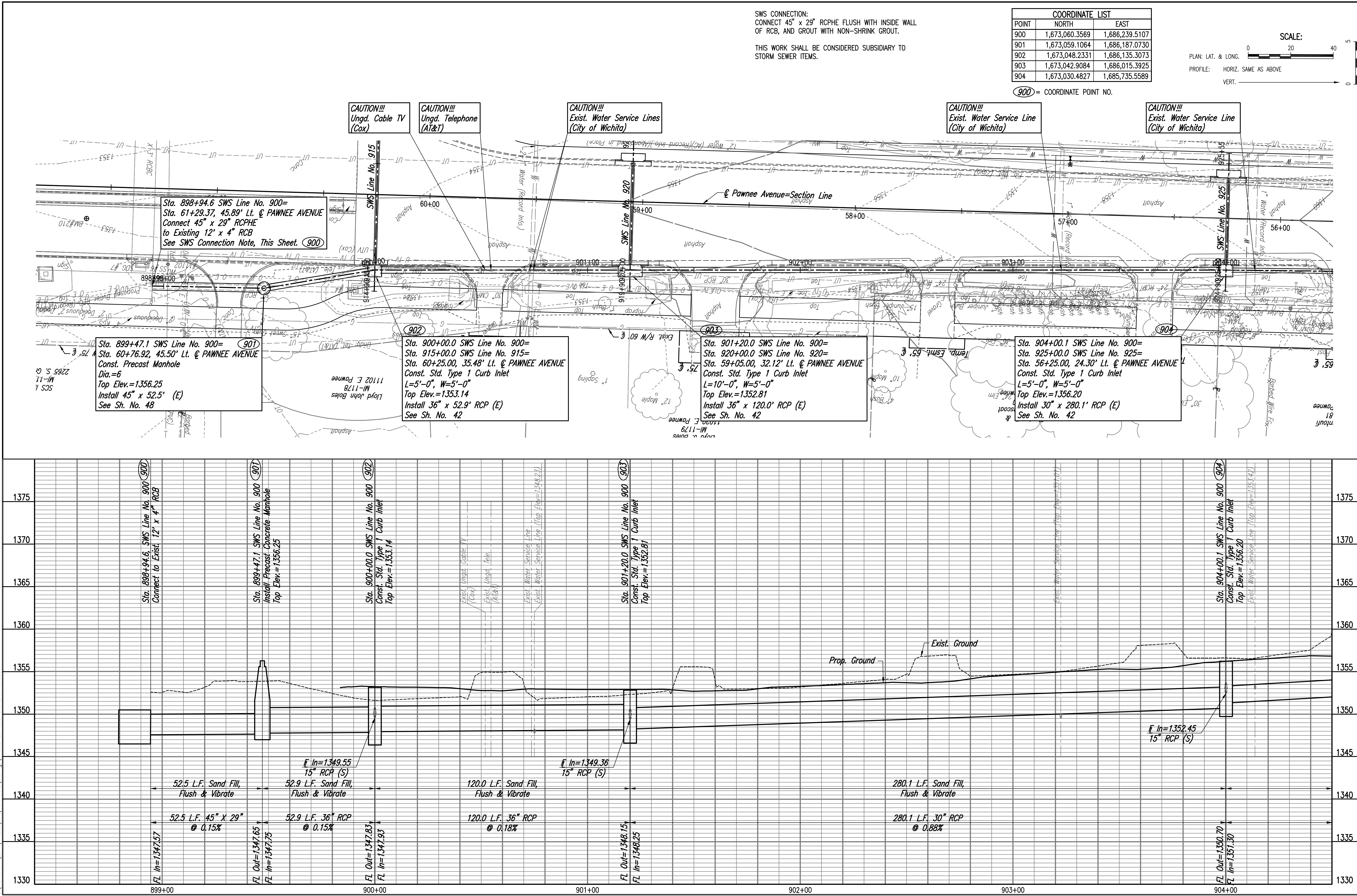


CHECKED	DATE
CHECKED	

CHECKED	DATE
CHECKED	

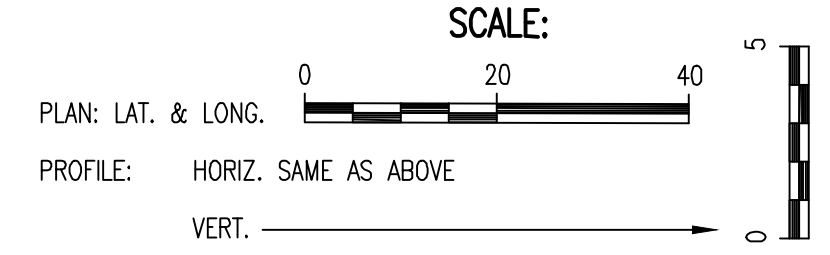
Saved: 04-08-2021 5:27:41 PM by RILEY SCHMITZ
 Plot Scale: 1" = 40' - 09-2021 2:24:11 PM by BUS
 U:\wchita-civil\2017\171395\001\muni-trans\Drawings\171395-001-36C-SWS Line No. 900



SWS CONNECTION:
 CONNECT 45" x 29" RCPHE FLUSH WITH INSIDE WALL
 OF RCB, AND GROUT WITH NON-SHRINK GROUT.

THIS WORK SHALL BE CONSIDERED SUBSIDIARY TO
 STORM SEWER ITEMS.

COORDINATE LIST		
POINT	NORTH	EAST
900	1,673,060.3569	1,686,239.5107
901	1,673,059.1064	1,686,187.0730
902	1,673,048.2331	1,686,135.3073
903	1,673,042.9084	1,686,015.3925
904	1,673,030.4827	1,685,735.5589



900 = COORDINATE POINT NO.

Sta. 898+94.6 SWS Line No. 900=
 Sta. 61+29.37, 45.89' Lt. @ PAWNEE AVENUE
 Connect 45" x 29" RCPHE
 to Existing 12" x 4" RCB
 See SWS Connection Note, This Sheet. (900)

Sta. 899+47.1 SWS Line No. 900=
 Sta. 60+76.92, 45.50' Lt. @ PAWNEE AVENUE
 Const. Precast Manhole
 Dia.=6
 Top Elev.=1356.25
 Install 45" x 52.5' (E)
 See Sh. No. 48

Sta. 900+00.0 SWS Line No. 900=
 Sta. 915+00.0 SWS Line No. 915=
 Sta. 60+25.00, 35.48' Lt. @ PAWNEE AVENUE
 Const. Std. Type 1 Curb Inlet
 L=5'-0", W=5'-0"
 Top Elev.=1353.14
 Install 36" x 52.9' RCP (E)
 See Sh. No. 42

Sta. 901+20.0 SWS Line No. 900=
 Sta. 920+00.0 SWS Line No. 920=
 Sta. 59+05.00, 32.12' Lt. @ PAWNEE AVENUE
 Const. Std. Type 1 Curb Inlet
 L=10'-0", W=5'-0"
 Top Elev.=1352.81
 Install 36" x 120.0' RCP (E)
 See Sh. No. 42

Sta. 904+00.1 SWS Line No. 900=
 Sta. 925+00.0 SWS Line No. 925=
 Sta. 56+25.00, 24.30' Lt. @ PAWNEE AVENUE
 Const. Std. Type 1 Curb Inlet
 L=5'-0", W=5'-0"
 Top Elev.=1356.20
 Install 30" x 280.1' RCP (E)
 See Sh. No. 42

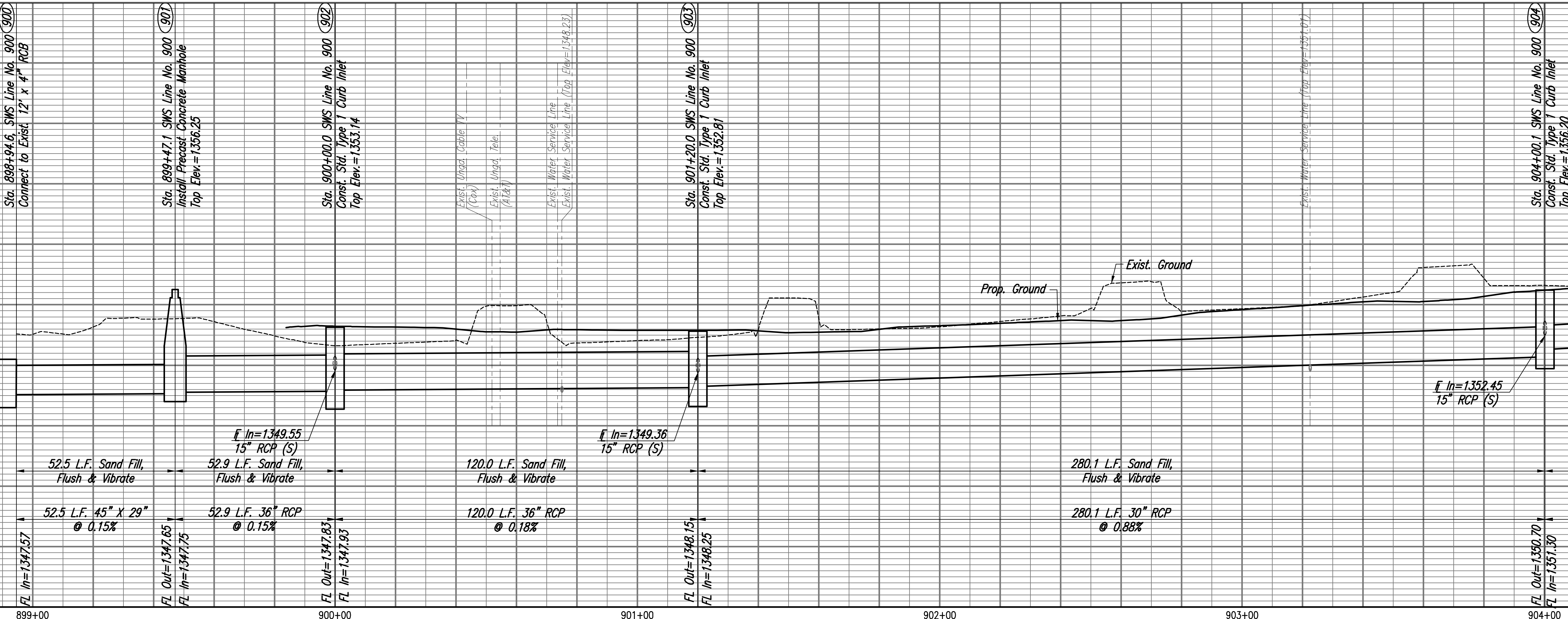
CAUTION!!!
 Ungd. Cable TV
 (Cox)

CAUTION!!!
 Ungd. Telephone
 (AT&T)

CAUTION!!!
 Exist. Water Service Lines
 (City of Wichita)

CAUTION!!!
 Exist. Water Service Line
 (City of Wichita)

CAUTION!!!
 Exist. Water Service Line
 (City of Wichita)



PAWNEE AVENUE FROM WEBB TO GREENWICH
 PAVING AND INCIDENTAL DRAINAGE IMPROVEMENTS

SWS LINE NO. 900

PROFESSIONAL ENGINEERING CONSULTANTS P.A.
 308 SOUTH TOPEKA WICHITA, KS 67202
 316-262-2681 www.pecinc.com

Designed By: RUS Date: APRIL 2021
 Drawn By: BUS, CP Job No.: 171395-002
 GARY JANZEN, P.E.-CITY ENGINEER
 CITY OF WICHITA PROJECT NO. 472-85434

Sheet 36 of 134