

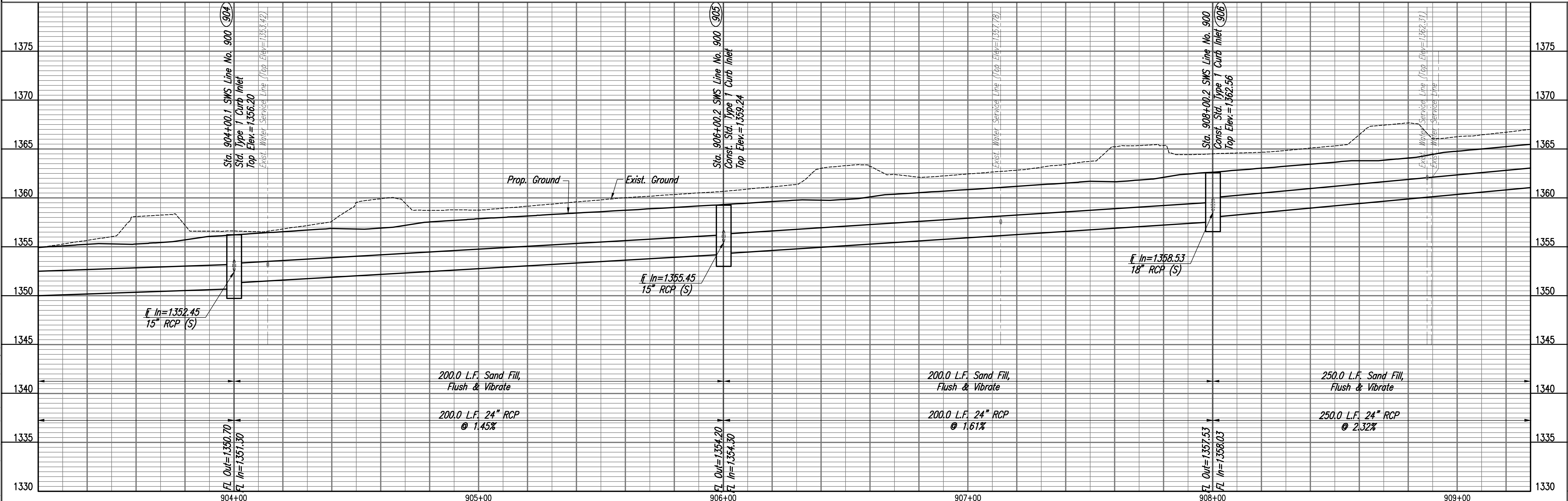
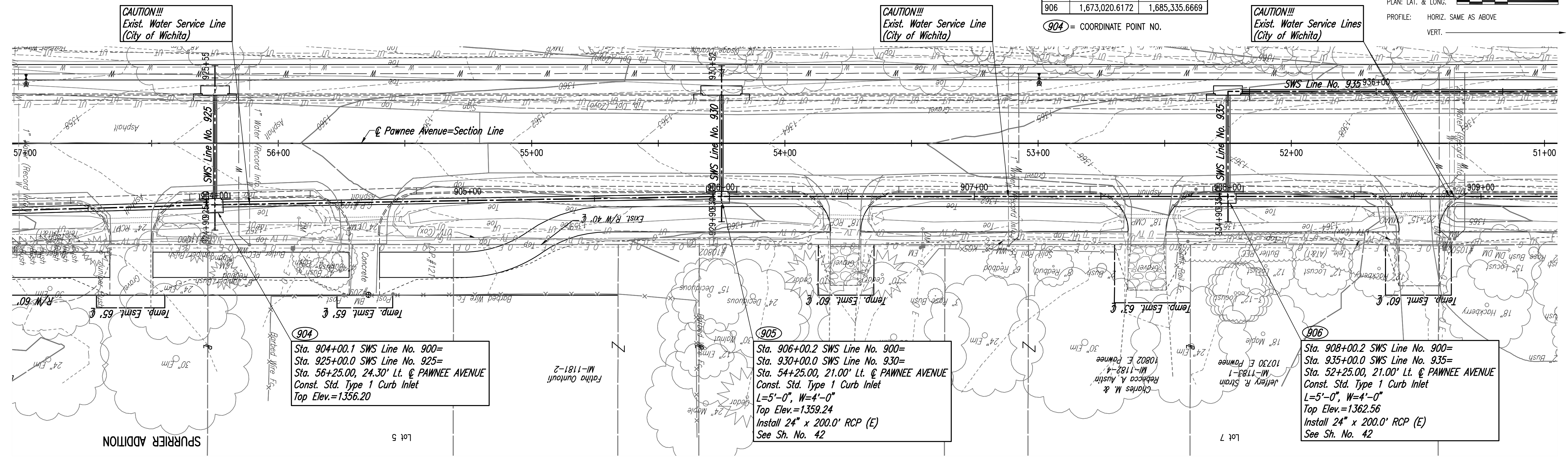
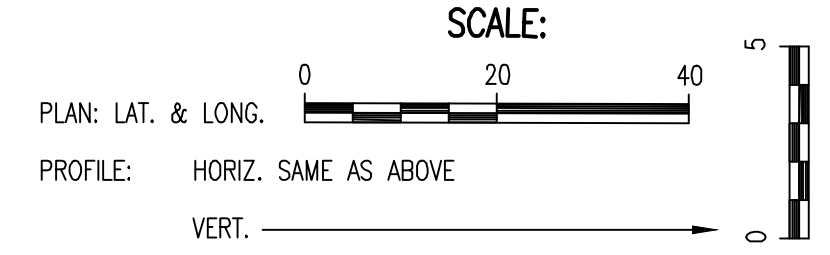
CHECKED	DATE
CHECKED	

CHECKED	DATE
CHECKED	

Saved: 03-18-2021 10:49:12 AM by BILL SEYSON
 Plot Scale 1:1 07-09-2021 2:24:29 PM by BUS
 U:\wchita-civil\2017\171395\001\Drawings\171395-001-37C-SWS Line No. 900

COORDINATE LIST		
POINT	NORTH	EAST
904	1,673,030.4827	1,685,735.5589
905	1,673,023.9019	1,685,535.6400
906	1,673,020.6172	1,685,335.6669

904 = COORDINATE POINT NO.



PAWNEE AVENUE FROM WEBB TO GREENWICH
 PAVING AND INCIDENTAL DRAINAGE IMPROVEMENTS
SWS LINE NO. 900
 GARY JANZEN, P.E. - CITY ENGINEER
 CITY OF WICHITA PROJECT NO. 472-85434
 Job No. 171395-002 Date APRIL 2021
 Designed By BUS, CP Drawn By BUS, CP
 PROFESSIONAL ENGINEERING CONSULTANTS P.A.
 308 SOUTH TOPEKA WICHITA, KS 67202
 316-262-2691 www.pec1.com
PEC
 Sheet 37 of 134