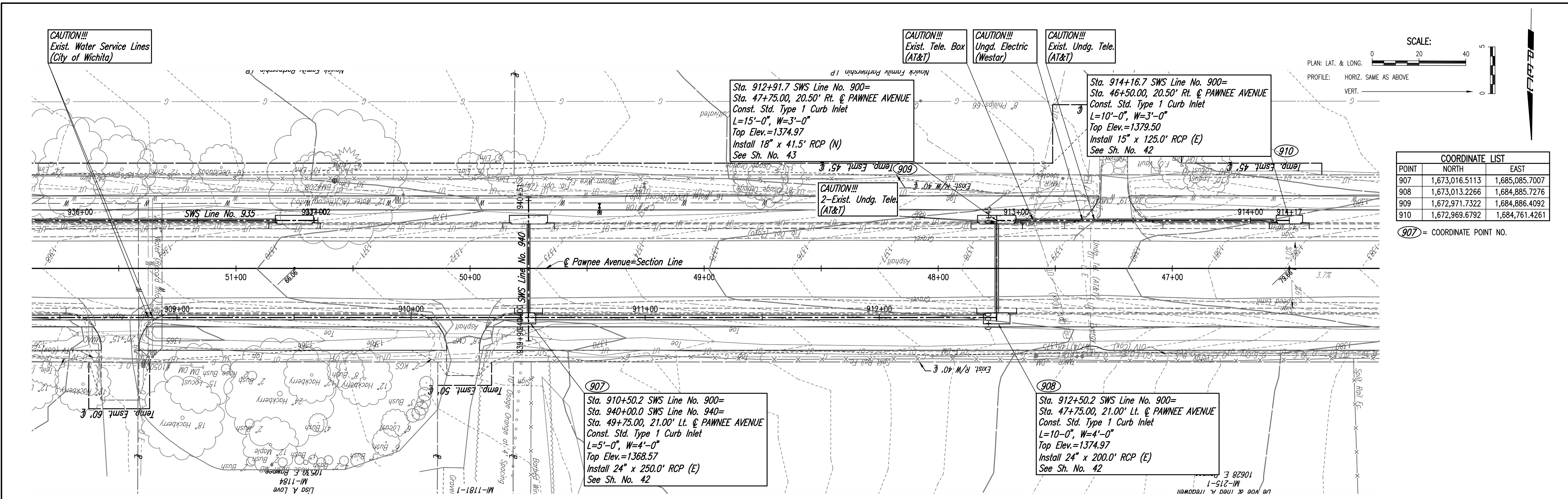


BY: _____ DATE: _____
 CHECKED: _____
 CHECKED: _____

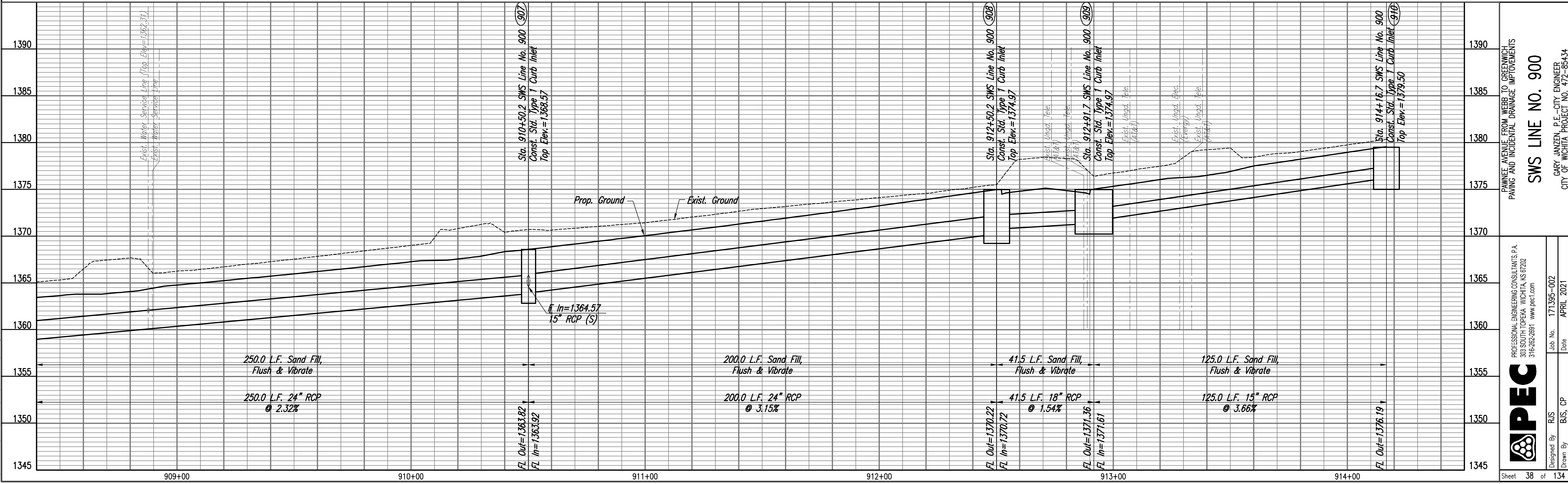
BY: _____ DATE: _____
 CHECKED: _____
 CHECKED: _____

Saved: 03-18-2021 10:53:01 AM by BILL SEYSON
 Plot Scale 1:1 07-09-2021 2:24:46 PM by BUS
 U:\wchita-civil\2017\171395-001\muni-trans\Drawings\171395-001-38C-SWS Line No. 900



COORDINATE LIST		
POINT	NORTH	EAST
907	1,673,016.5113	1,685,085.7007
908	1,673,013.2266	1,684,885.7276
909	1,672,971.7322	1,684,886.4092
910	1,672,969.6792	1,684,761.4261

(907) = COORDINATE POINT NO.



PAWNEE AVENUE FROM WEBB TO GREENWICH
 PAVING AND INCIDENTAL DRAINAGE IMPROVEMENTS

SWS LINE NO. 900

GARY JANZEN, P.E.-CITY ENGINEER
 CITY OF WICHITA PROJECT NO. 472-85434

PROFESSIONAL ENGINEERING CONSULTANTS P.A.
 308 SOUTH TOPEKA WICHITA, KS 67202
 316-262-2691 www.pec1.com

PEC

Designed By: BUS
 Drawn By: BUS, CP

Job No. 171395-002
 Date: APRIL 2021

Sheet 38 of 134