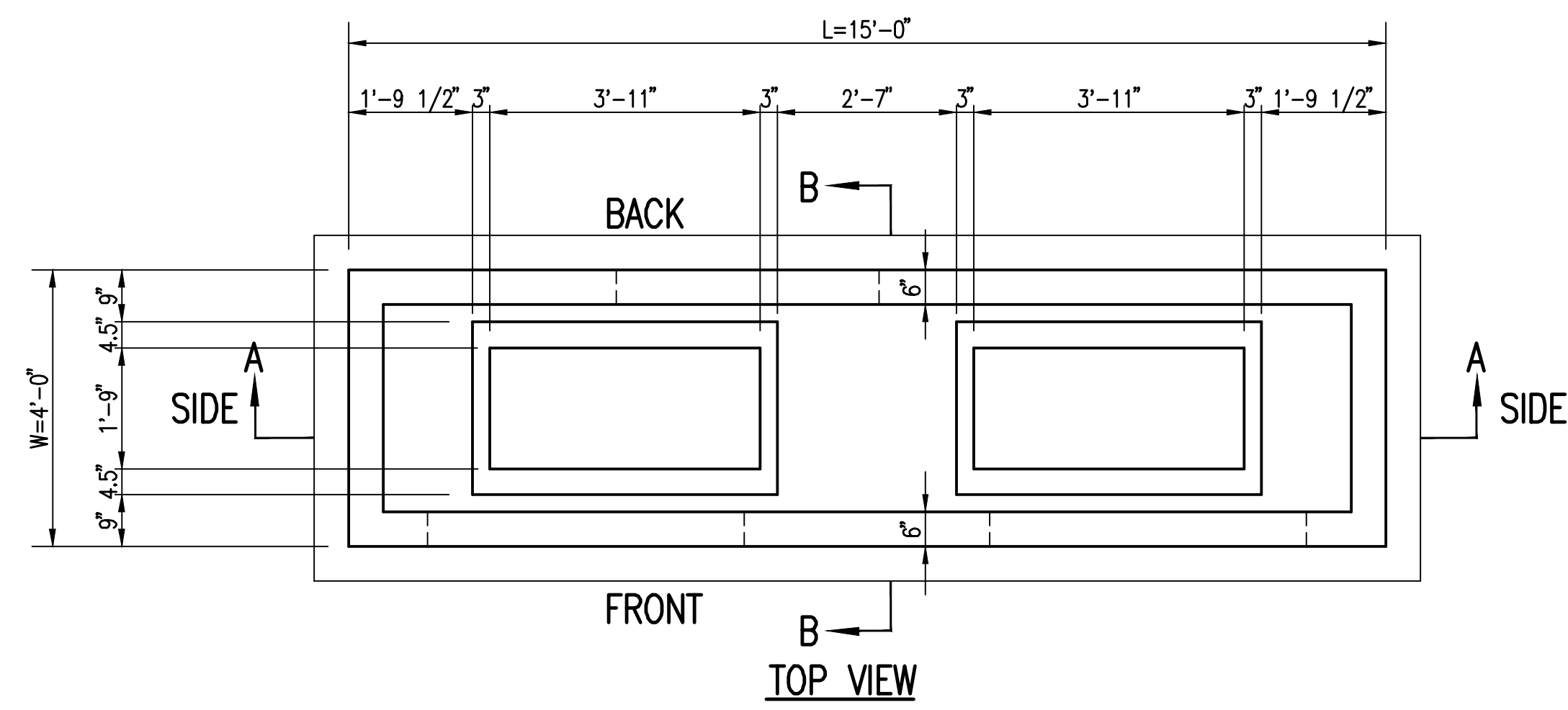
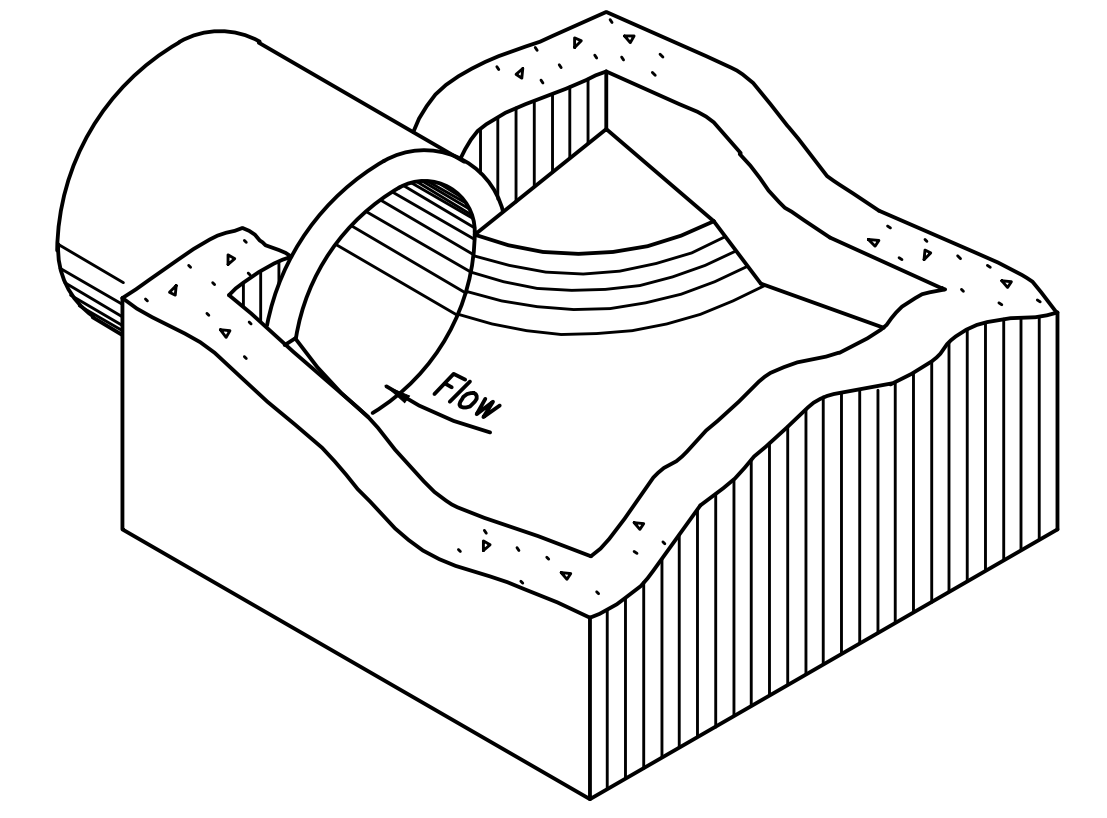


TOP SLAB PLAN

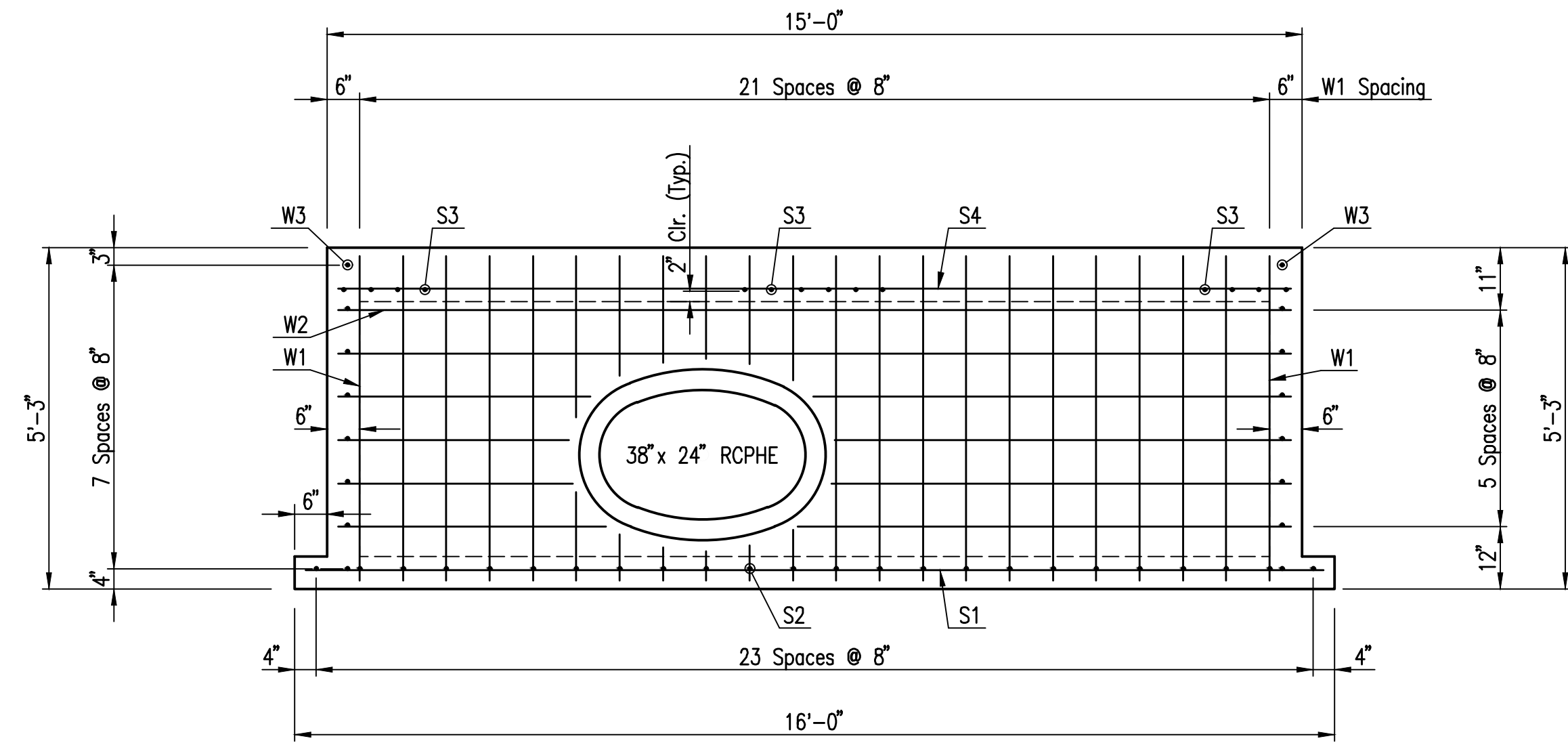


TOP VIEW

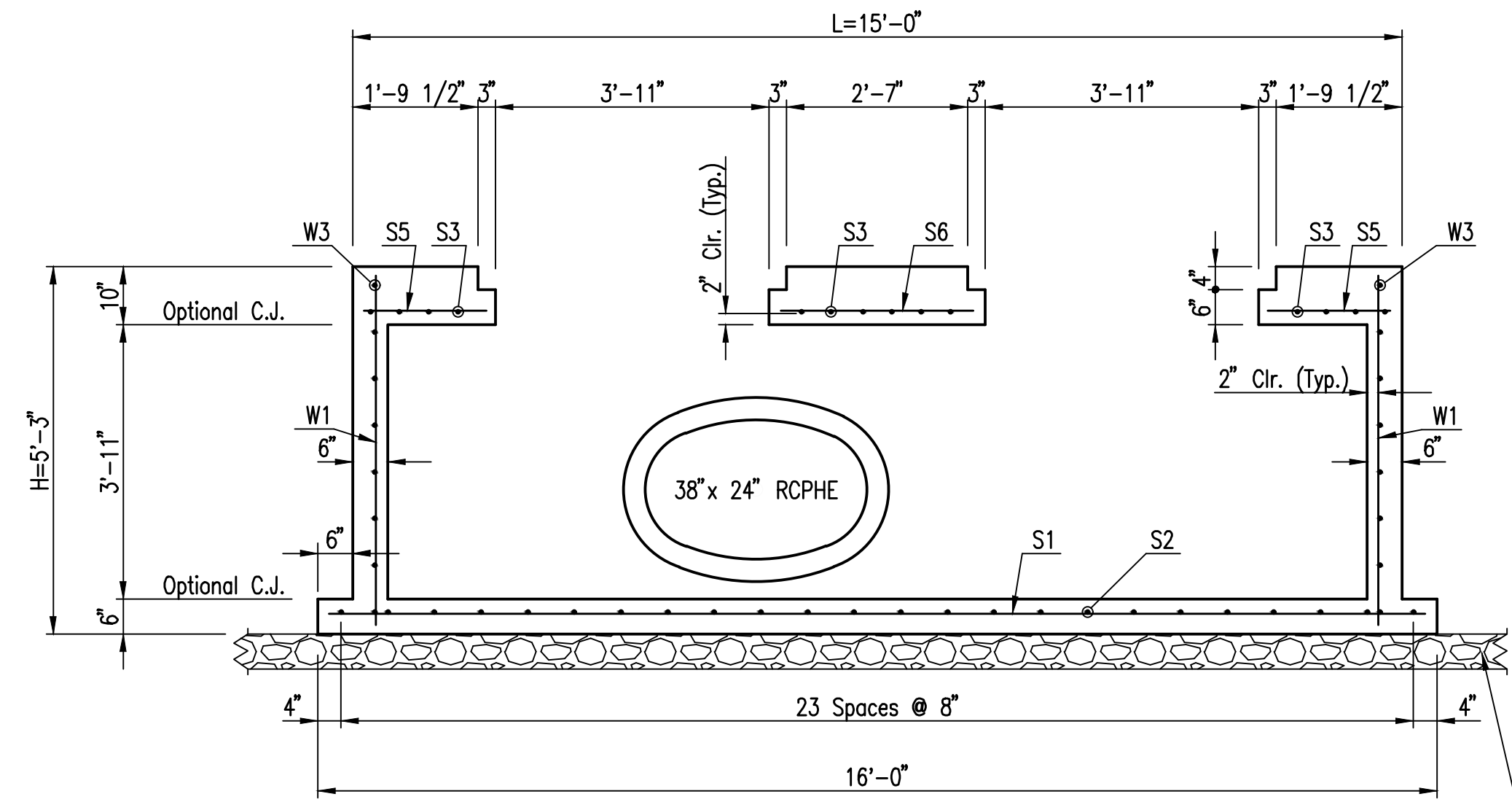


Floor of inlet or manhole shall be shaped as shown to increase hydraulic efficiency.

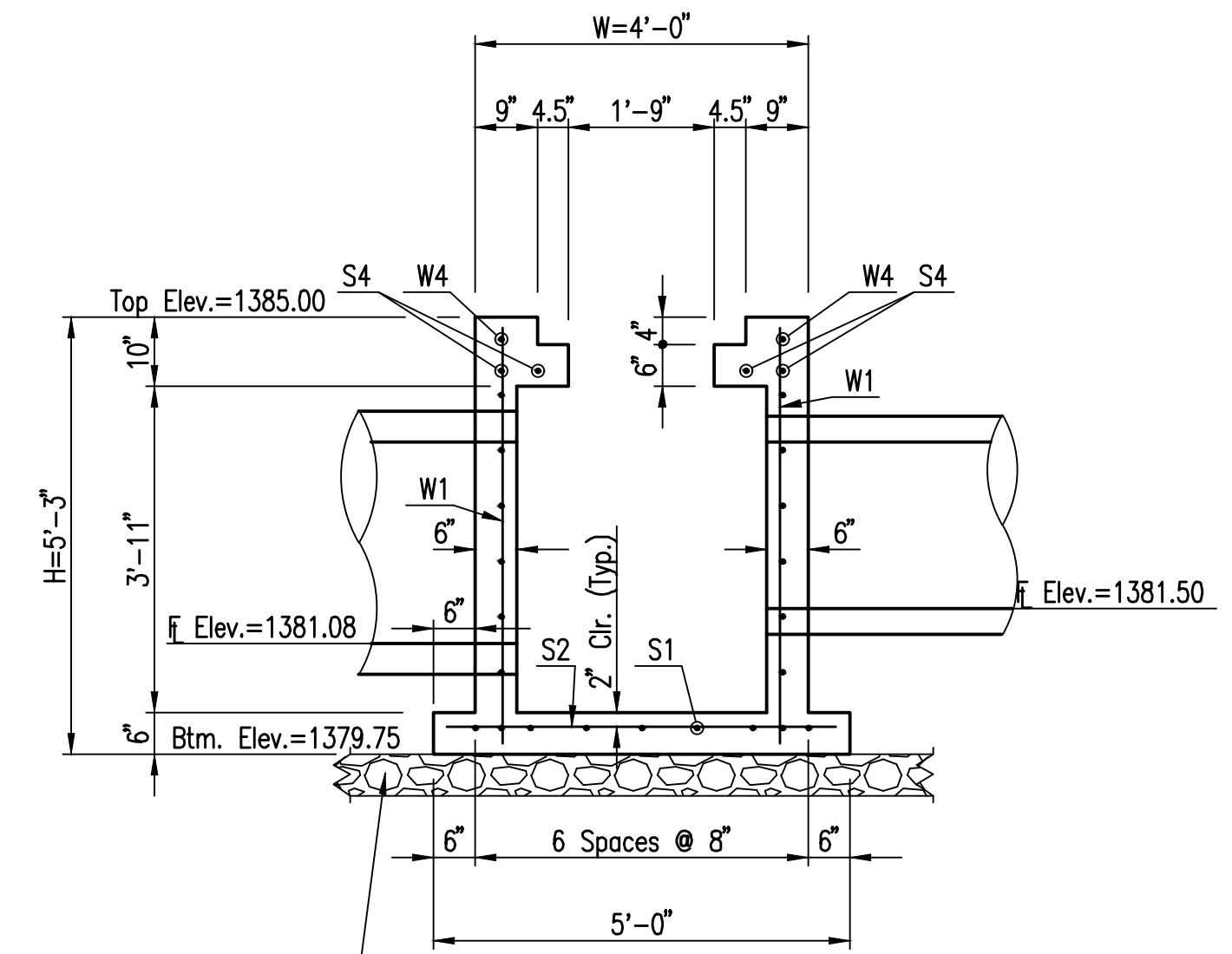
ISOMETRIC VIEW



BACK

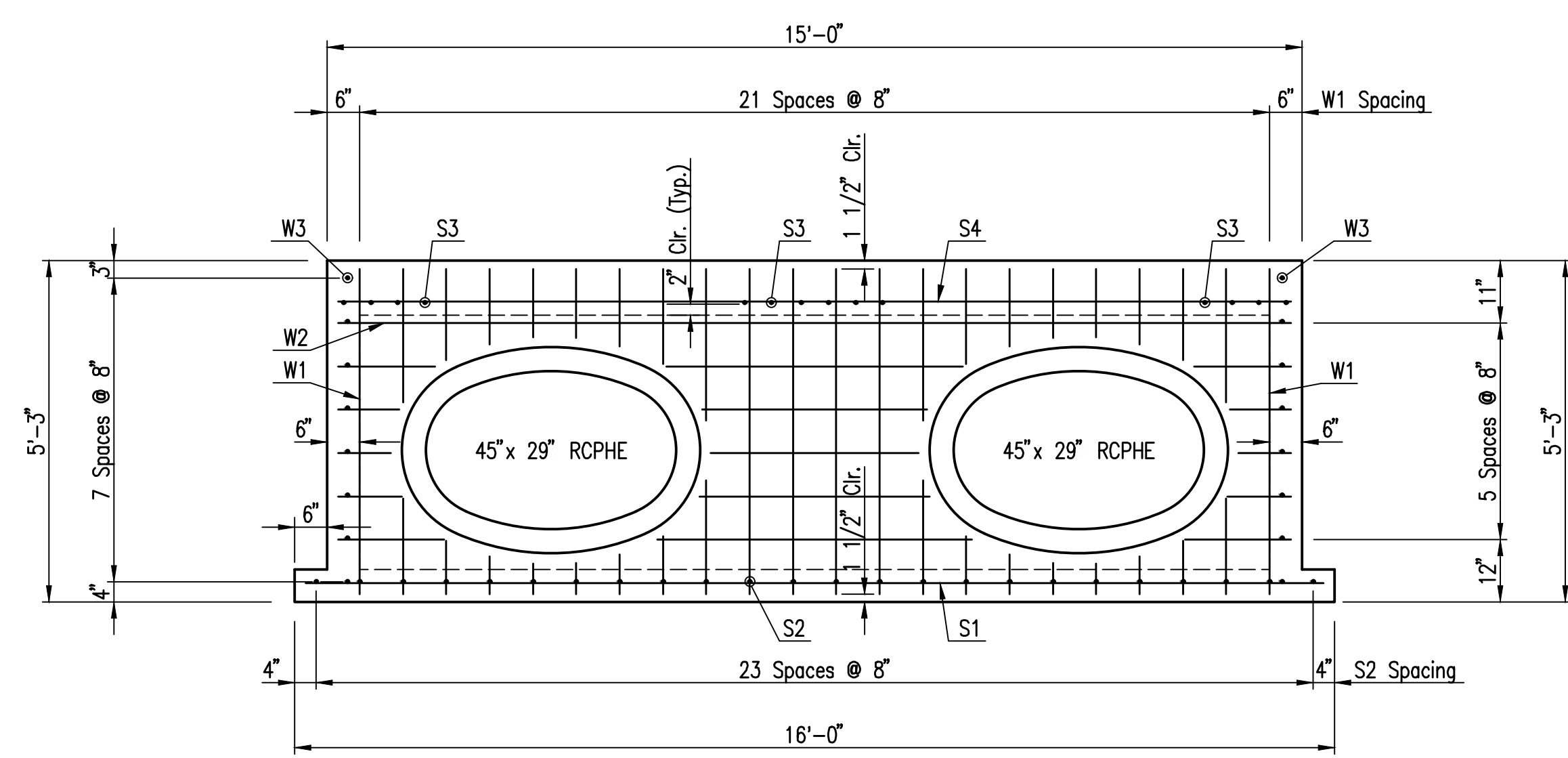


SECTION A-A

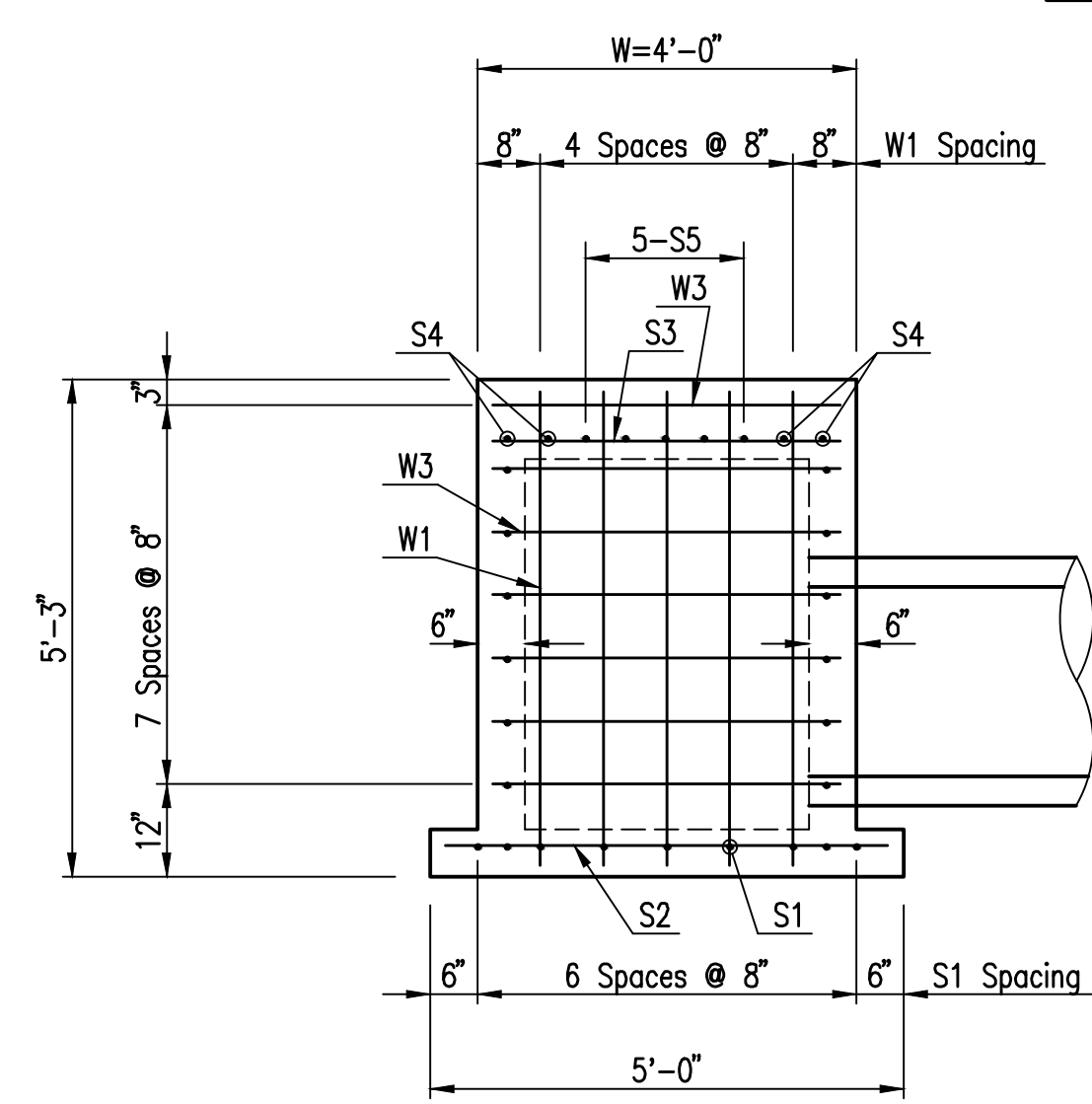


SECTION B-B

6" CRUSHED ROCK BASE BEDDING TO LIMITS OF EXCAVATION PER CITY OF WICHITA SPECIFICATIONS



FRONT



SIDE

| REINFORCING STEEL LIST | | | |
|------------------------|-----|------|--------|
| "L" | "W" | "H" | (104) |
| 15'-0" x 4'-0" x 5'-3" | | | |
| Bar | No. | Size | Length |
| S1 | 7 | #4 | 15'-8" |
| S2 | 24 | #4 | 4'-8" |
| S3 | 14 | #4 | 3'-8" |
| S4 | 4 | #4 | 14'-8" |
| S5 | 14 | #4 | 1'-9" |
| S6 | 7 | #4 | 2'-9" |
| W1* | 54 | #4 | 5'-0" |
| W2* | 12 | #4 | 14'-8" |
| W3 | 14 | #4 | 3'-8" |

Quantities are for information only.
* Field Cut Bars Around Pipes.

GENERAL NOTES

- CONCRETE SHALL HAVE A MINIMUM 28 DAY COMPRESSIVE STRENGTH OF 4000 P.S.I.
- ALL DIMENSIONS RELATIVE TO REINFORCING STEEL ARE TO CENTERLINE OF BAR UNLESS OTHERWISE NOTED. ALL REINFORCING STEEL SHALL CONFORM TO A.S.T.M. DESIGNATION A615 GRADE 60. CLEARANCE SHALL BE 2" UNLESS OTHERWISE NOTED.
- GRATE FRAME TO BE INSTALLED ON THIN MORTAR CUSHION AROUND TOP CONCRETE BLOCKOUT. CONCRETE USED FOR INLET CONSTRUCTION SHALL CONFORM TO CITY OF WICHITA SPECIFICATIONS FOR CONCRETE PAVEMENT MIX.
- INLET INVERT SHALL BE SHAPED WITH 8 SACK SAND MIX CONCRETE TO CREATE FLOW CHANNELS AND TO INCREASE HYDRAULIC EFFICIENCY SUCH THAT THE INLET WILL BE SELF CLEANING BETWEEN ALL INLET AND/OR OUTLET PIPES.
- THE ENDS OF ALL PIPES INSTALLED IN INLETS SHALL BE CUT OFF FLUSH WITH THE INSIDE FACE OF THE INLET WALL.
- INLET FRAME AND GRATE TO BE DEETER #2434, EJIW #5391 Z3 OR APPROVED EQUAL FOR SPECIAL AREA INLET.
- CONTRACTOR SHALL REMOVE LIFTING HOOKS AFTER INSTALLATION. RECESSES IN INLET WALL SHALL BE GROUTED FLUSH TO THE INLET WALL WITH HYDRAULIC CEMENT AFTER THE INLET IS IN PLACE. LIFTING HOLES THRU THE INLET WALL WILL NOT BE ACCEPTED.
- CUT REINFORCING BARS TO PROVIDE 2" CLEAR AROUND CONCRETE PIPES IN THE WALLS, AS REQUIRED.

Sowed 04-09-2021 10:44:55 AM by BILL SEYSON
 Plot Scale 1:1 07-09-2021 2:26:23 PM by BJS
 U:\wchita-civil\2017\171395\001\muni-rans\Drawings\171395-001-65C-SPECIAL AREA INLET DETAILS

| | | | | | | | |
|--|--|--------------------|--|------------------|--|-----------------|--|
| No. _____ | | Revision _____ | | By _____ | | Date _____ | |
| PANWEE AVENUE FROM WEBB TO GREENWICH PAVING AND INCIDENTAL DRAINAGE IMPROVEMENTS SPECIAL AREA INLET DETAILS GARY JANZEN, P.E.-CITY ENGINEER CITY OF WICHITA PROJECT NO. 472-85434 | | | | | | | |
| | | | | | | | |
| Designed by RJS | | Job No. 171395-002 | | Drawn by BJS, CP | | Date APRIL 2021 | |
| | | | | | | Sht. 45 of 134 | |