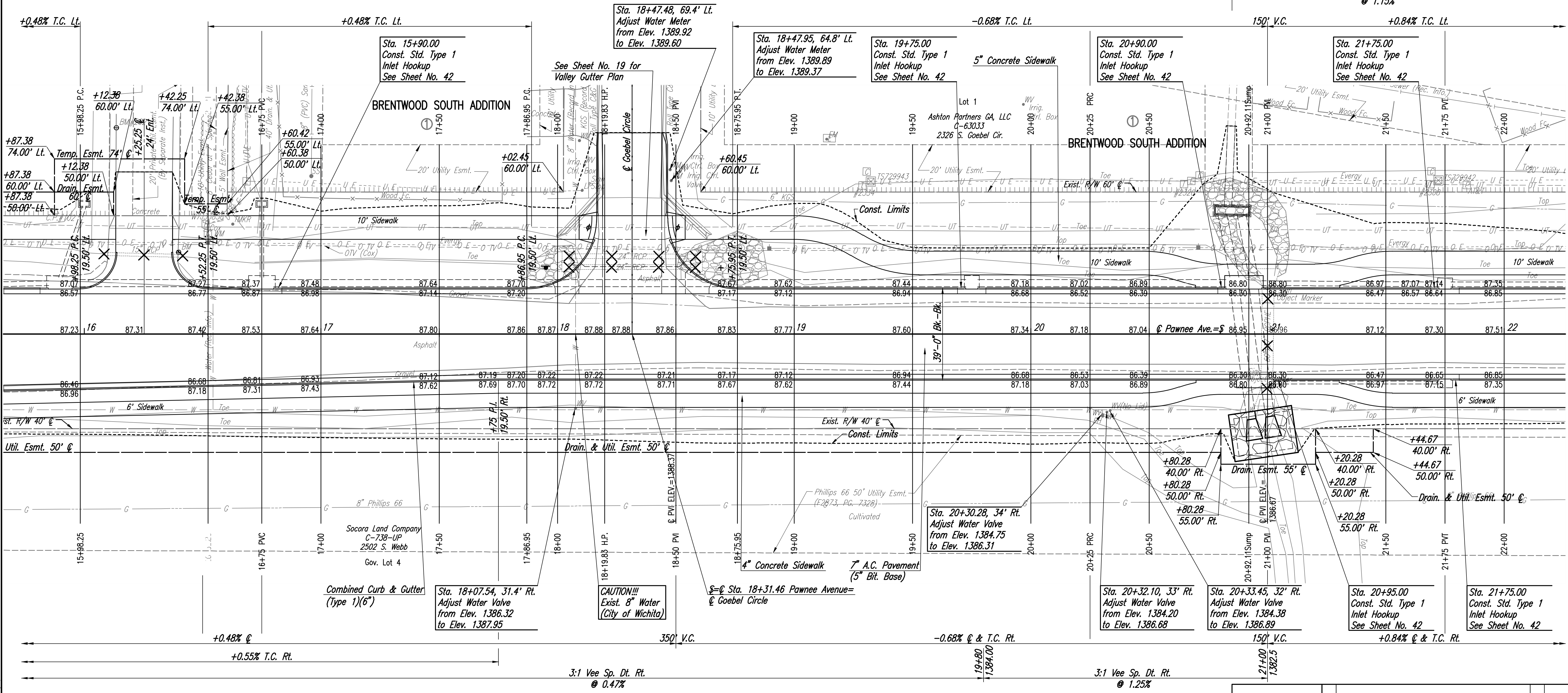
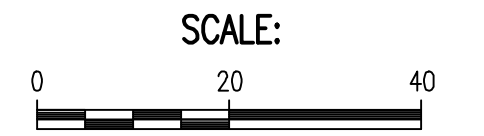


REMOVAL OF STRUCTURES (INFORMATION ONLY)

ALIGNMENT	STATION	SIDE	DESCRIPTION
Pawnee	16+25.25	33.4' Lt.	15" RCP
Pawnee	18+00.00	Lt.	RIPRAP
Pawnee	18+31.46	30.6' Lt.	2-24" RCP
Pawnee	18+75.00	Lt.	RIPRAP
Pawnee	20+83.68	62.8' Lt.	End Section
Pawnee	21+00.00	00.0' Lt.	60" x 37" RCPHE
Pawnee	21+00.00	Lt.	RIPRAP

UTILITIES CONTACTS

- Power: Butler REC
- Power: Evergy
- Gas: Kansas Gas Service
- Gas: Phillips 66 Pipeline, LLC
- Telephone: AT&T
- Cable TV: Cox Communications
- Sanitary Sewer: City of Wichita
- Storm Water Sewer: City of Wichita
- Water: City of Wichita
- Communications: Zayo Group



LEGEND

◊ CONSTRUCT 10' STD. WHEELCHAIR RAMP (TYPE A), SEE SHEET NO. 24.

No.	Revision	By	Date

**PAWNEE AVENUE FROM WEBB TO GREENWICH
PAVING AND INCIDENTAL DRAINAGE IMPROVEMENTS**

PAWNEE-16+00 TO 22+00

GARY JANZEN, P.E.—CITY ENGINEER
CITY OF WICHITA PROJECT NO. 472-85434

PROFESSIONAL ENGINEERING CONSULTANTS, P.A.
303 SOUTH TOPEKA WICHITA, KS 67202
316-262-2891 www.pec1.com

Designed by: RJS

Job No.: 171395-002

Sht. 07 of 134

Drawn by: BJS, CP

Date: APRIL 2021

Sowed: 04-09-2021 4:37:13 PM by: AGRISTY.SKAGGS
 Plot Scale: 1" = 40'-0" (1:480) by: BJS
 U:\wchita-civil\2017\171395\001\main-roads\Drawings\171395-001-07C-PAWNEE-16+00 TO 22+00