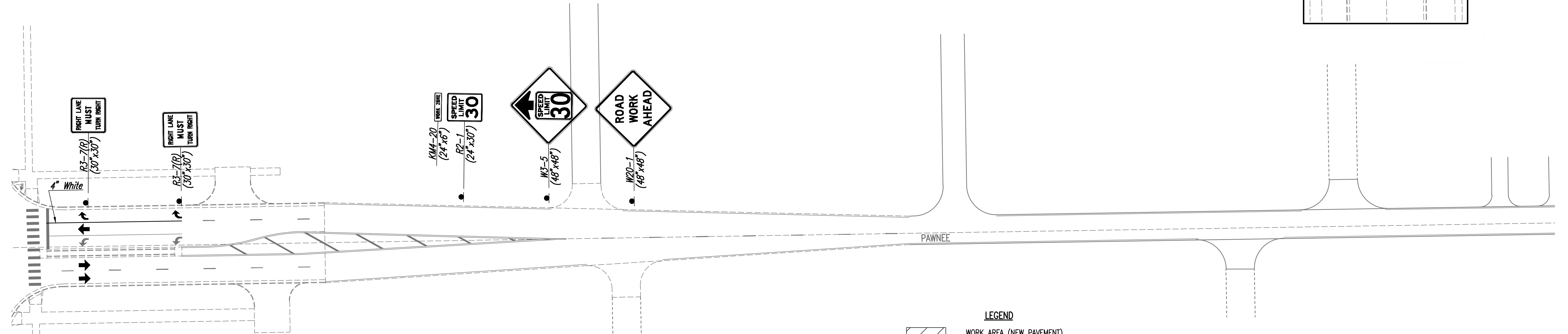
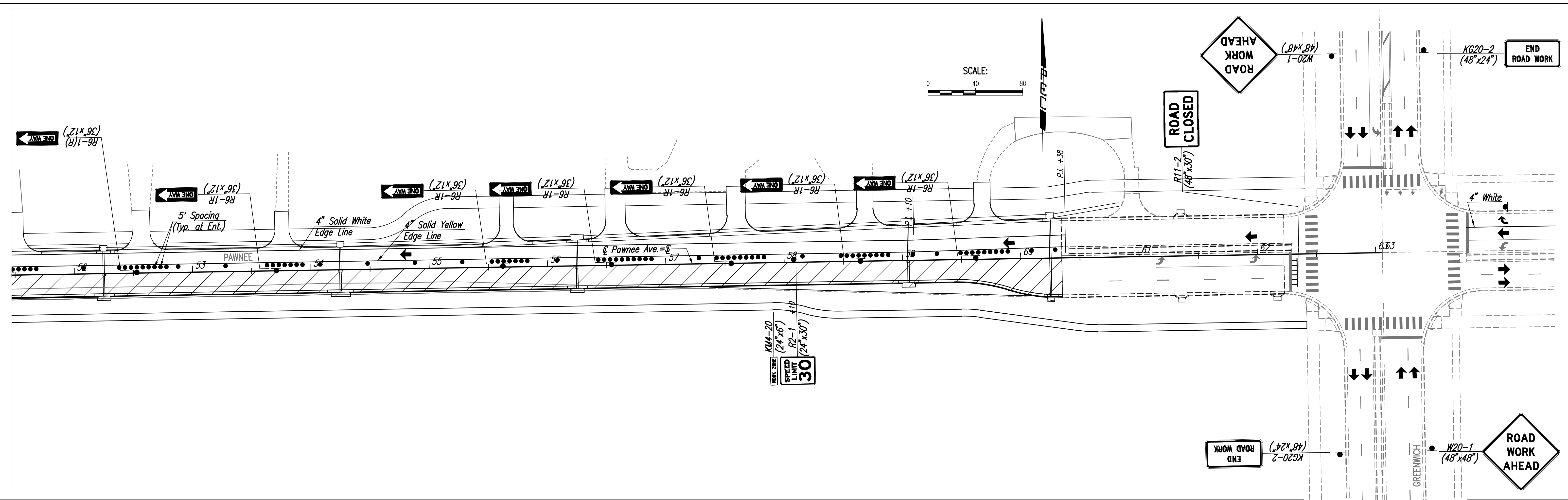


Scaled: 07-08-2021 5:14:21 PM by: BJS  
 Plot Scale: 1" = 40'-0" (1:480)  
 User: wchitta-civil\2017\171395\001\muni-trans\Drawings\171395-001-81C-TRAFFIC CONTROL-STAGE3



**Note:** Utilities are not shown on Traffic Control Plans. The Contractor is responsible for verification as to type and location of underground utilities as may be necessary to avoid damage thereto. The Contractor is responsible for repairing any damage to underground utilities.

Moving temporary concrete safety barrier, channelizing devices, and signs, and additional traffic control may be necessary to construct side roads and entrances. Unless closure is permitted, maintain all weather access at all times during construction. This shall be considered Subsidiary.

NOTE: SIGNS AND BARRICADES ARE SHOWN DIAGRAMMATICALLY ONLY. CONTRACTOR WILL BE RESPONSIBLE TO INSTALL THE REQUIRED NUMBER OF POSTS TO SUPPORT THE INSTALLATION.

- LEGEND**
- WORK AREA (NEW PAVEMENT)
  - CHANNELIZING DEVICES AT 40' SPACING UNLESS OTHERWISE NOTED
  - TRAFFIC CONTROL SIGN
  - YELLOW TYPE "A" LOW INTENSITY WARNING LIGHT
  - RED TYPE "B" HIGH INTENSITY WARNING LIGHT
  - 18"x18" FLUORESCENT RED-ORANGE FLAGS
  - TYPE III BARRICADE WITH TYPE A LOW INTENSITY FLASHING WARNING LIGHTS
  - DIRECTION OF TRAFFIC

No.	Revision	By	Date

PAWNEE AVENUE FROM WEBB TO GREENWICH  
PAVING AND INCIDENTAL DRAINAGE IMPROVEMENTS

### TRAFFIC CONTROL-STAGE 3

GARY JANZEN, P.E.-CITY ENGINEER  
CITY OF WICHITA PROJECT NO. 472-85434

PROFESSIONAL ENGINEERING CONSULTANTS, P.A.  
303 SOUTH TOPEKA WICHITA, KS 67202  
316-262-2891 www.pec1.com

Designed by: RJS  
 Drawn by: BJS, CP

Job No. 171395-002  
 Date: APRIL 2021

Sht. 81 of 134