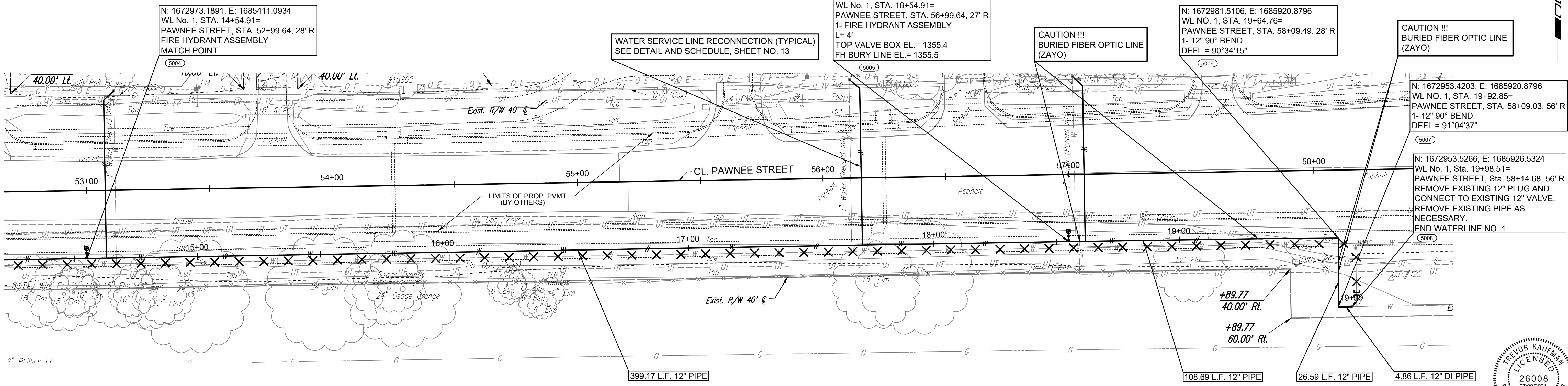
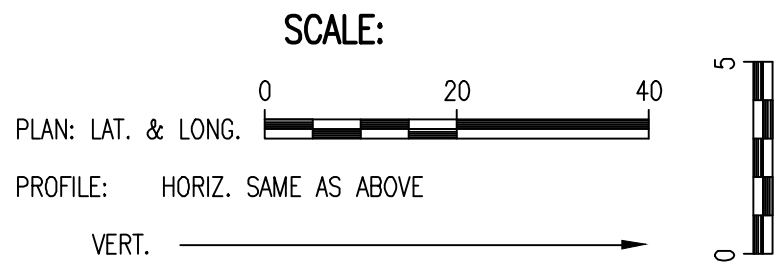


PLAN	CHECKED	DATE
	CHECKED	

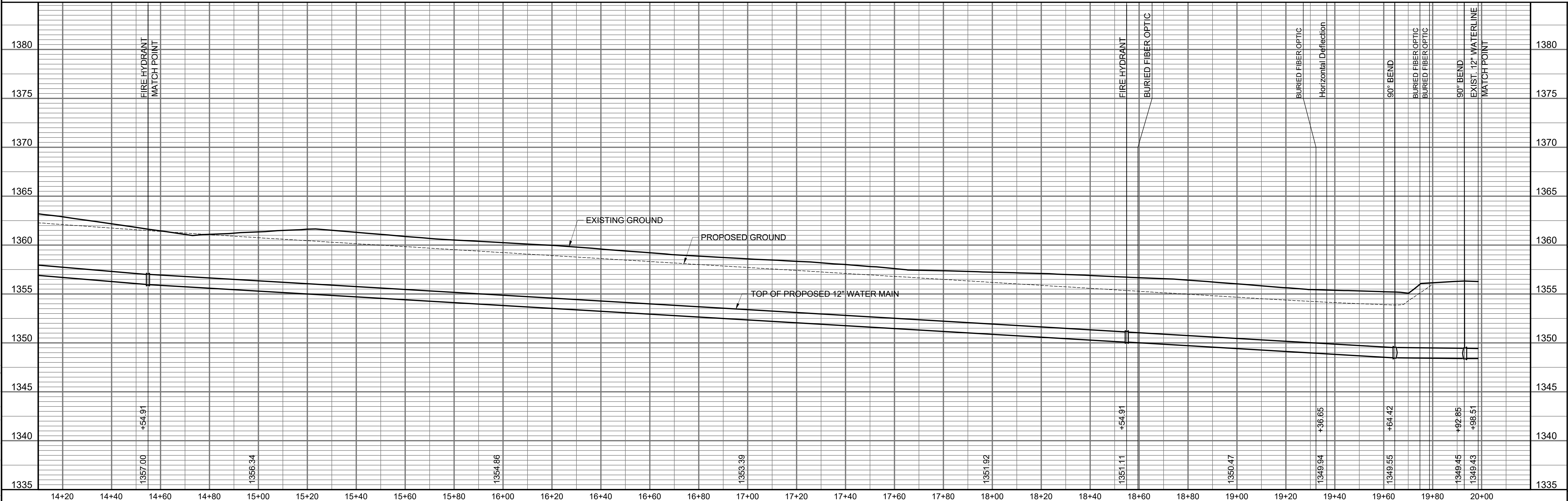
PROFILE	CHECKED	DATE
	CHECKED	

* PRIOR TO BEGINNING CONSTRUCTION, THE CONTRACTOR SHALL EXCAVATE THE EXISTING 12" WATERLINE AT STATION 19+99.00 TO VERIFY PIPE SIZE, TYPE, FITTINGS, AND HORIZONTAL AND VERTICAL LOCATION. THE CONTRACTOR SHALL REPORT HIS FINDINGS TO THE ENGINEER SO THAT ANY NECESSARY PLAN MODIFICATIONS CAN BE MADE. ANY ADDITIONAL LABOR OR MATERIALS NECESSARY TO COMPLETE THE CONNECTION SHALL BE CONSIDERED SUBSIDIARY TO THE PROJECT.

- ✕ = DENOTES WATERLINE TO BE ABANDONED IN PLACE.
- ⊔ = DENOTES CAP/PLUG BY THE CONTRACTOR. (INCLUDES REMOVAL AND REPLACEMENT OF PAVEMENT)
- ⊗ = CLOSE VALVE, REMOVE VALVE BOX (SALVAGE TO CITY) (INCLUDES REMOVAL AND REPLACEMENT OF PAVEMENT)
- (5000) = SEE SHEET NO. C002 FOR WATERLINE COORDINATES (TYP.)



WATERLINE NO. 1



Saved: 07-07-2021 11:11:02 AM by KURTIS DEKAT
 Plot Scale: 1" = 10'-0" (Horizontal), 1" = 5'-0" (Vertical)
 U:\Projects\Civil\2021\171395\004\Drawings\171395-004-5-WATERLINE NO.1



WATERLINE NO. 1
 PAWNEE AVENUE FROM WEBB TO GREENWICH
 PAVING AND INCIDENTAL DRAINAGE IMPROVEMENTS
 GARY JANZEN, P.E. - CITY ENGINEER
 CITY OF WICHITA PROJECT NO. 472-85434

DESIGNED BY: JAC, CAS
 DRAWN BY: CSL
 Job No.: 171395-004
 Date: JANUARY 2021
 PROFESSIONAL ENGINEERING CONSULTANTS, P.A.
 303 SOUTH TOPEKA WICHITA, KS 67202
 316-262-2691 www.pec1.com