

N: 1,673,017.8760, E: 1,683,742.5540
 Sta. 0+00.0
 Existing Precast Concrete MH.
 Core existing concrete MH wall and install New 12" Pipe. Seal new 12" Pipe to MH with an approved waterstop gasket and non-shrink grout. Construct a minimum of 3' Crushed Rock Encasement from MH wall. Reshape MH floor to provide smooth flow.

Adjust manhole top elevation to the elevation provided in the profile. The Contractor shall remove a barrel section from the existing Precast Manhole and replace it with a new Precast Barrel Section of length necessary to match adjusted elevation. The Cone Section and Frame and Cover may be reused as approved by the Construction Engineer. The contractor shall provide new adjustment rings as necessary. Manhole adjustment shall be paid for at the contract unit price per each.

Exist. MH Elev. = 1385.46
 Prop. MH Elev. = 1387.1
 Difference in elevation = +1.64'

CAUTION !!!
 Power Pole (Every) Contractor to restrain pole in place thru construction. At least 72 hours prior to start of construction, coordinate restraint with Every, Mr. Zach Laws at 261-6264.

CAUTION !!!
 16" Waterline Contractor to verify the Proposed Sanitary Sewer has a minimum clearance of 2' from the existing Waterline.

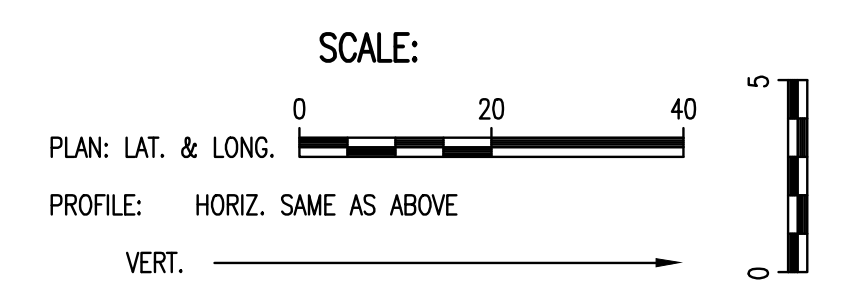
CAUTION !!!
 Prop. 30" RCP SWS

CAUTION !!!
 Prop. 18" RCP SWS

CAUTION !!!
 Buried Fiber Optic (AT&T)

CAUTION !!!
 8" Pipe Line (Phillips 66) **

N: 1,672,870.3781, E: 1,683,741.7629
 Sta. 1+47.50
 Const. MH 1
 5' Dia. Standard MH



(5000) = SEE SHEET NO. C002 FOR SANITARY SEWER COORDINATES (TYP.)

PHILLIPS 66 REGULATIONS **

- CONTRACTOR SHALL CONTACT PHILLIPS 66 REPRESENTATIVE A MINIMUM OF 72 HOURS PRIOR TO THE INSTALLATION OF SANITARY SEWER IMPROVEMENTS. CONTRACTOR SHALL NOT COMMENCE WORK WITHIN TWENTY FIVE FEET OF THE PHILLIPS 66 PIPELINE WITHOUT A PHILLIPS 66 REPRESENTATIVE ON SITE (UNLESS OTHERWISE AGREED TO BY PHILLIPS 66). CONTRACTOR SHALL PROVIDE A SCHEDULE OF ACTIVITIES FOR THE DURATION OF INSTALLATION AT THIS TIME TO FACILITATE THE SCHEDULING OF PHILLIPS 66 WORK SITE REPRESENTATIVE. ANY SCHEDULE CHANGES SHALL BE IMMEDIATELY PROVIDED TO PHILLIPS 66 WORK SITE REPRESENTATIVE. (CONTACT KEVIN KENT - (316) 761-1621)
- THE USE OF PROBING RODS SHALL BE PERFORMED BY PHILLIPS 66 REPRESENTATIVES ONLY TO ENSURE NO DAMAGE TO THE PIPELINE COATING.
- HEAVY-WHEELED EQUIPMENT OVER 10,000 LBS OR TRACKED EQUIPMENT OVER 60,000 LBS WORKING ON OR NEAR THE PHILLIPS 66 PIPELINE (E.G. DUMP TRUCKS, BACKHOE, TRACKHOE, CRANE, BULLDOZER, LOGGING TRUCK, ETC.) SHALL NOT BE ALLOWED TO OPERATE DIRECTLY OVER THE PHILLIPS 66 PIPELINE OR IN THE PHILLIPS 66 RIGHT-OF-WAY UNLESS WRITTEN APPROVAL IS OBTAINED FROM PHILLIPS 66. HEAVY-WHEELED EQUIPMENT SHALL ONLY BE ALLOWED TO CROSS THE PHILLIPS 66 PIPELINE AT LOCATIONS DESIGNATED BY PHILLIPS 66. CONTRACTOR SHALL COMPLY WITH ALL PRECAUTIONARY MEASURES REQUIRED BY PHILLIPS 66 TO PROTECT ITS PIPELINES. WHEN INCLEMENT WEATHER EXISTS, PROVISION SHALL BE MADE TO COMPENSATE FOR SOIL DISPLACEMENT DUE TO SUBSIDENCE OF TIRES.
- CONTRACTOR SHALL REMOVE CUTTING TEETH FROM EXCAVATION EQUIPMENT BUCKET WHEN WITHIN 10 FEET OF THE PHILLIPS 66 PIPELINE. MECHANICAL EXCAVATION WILL CEASE, AND ONLY HAND EXCAVATION SHALL BE PERMITTED, WITHIN 18 INCHES OF A CRUDE OIL OR PRODUCT PIPELINE AND WITHIN 24 INCHES OF A LINE CONTAINING HIGHLY VOLATILE LIQUIDS (HVL). EXCAVATION WILL NOT BE ALLOWED TO CONTINUE UNTIL THE PHILLIPS 66 PIPELINE, VALVES, AND/OR OTHER FITTINGS TOP AND SIDES ARE VISIBLE TO THE SPOTTER. HOWEVER, PROCEED WITH EXTREME CAUTION WHEN WITHIN THREE FEET OF THE PIPELINE.
- TEMPORARY SUPPORT OF ANY EXPOSED PHILLIPS 66 PIPELINE BY THE CONTRACTOR MAY BE NECESSARY IF REQUIRED BY THE PHILLIPS 66 ON-SITE REPRESENTATIVE TO COMPLETE CONSTRUCTION OF CROSSING. DEPENDING ON THE SIZE AND THE AMOUNT OF EXPOSED PHILLIPS 66 PIPELINE, ADDITIONAL PIPELINE SUPPORT MAY BE NECESSARY TO PROTECT THE PIPELINE FROM STRESSES THAT MAY BE CAUSED BY THE SETTLING OF THE SOIL AND PIPELINE AFTER EXCAVATION. CONSULT THE PHILLIPS 66 REPRESENTATIVE PRIOR TO COMMENCEMENT OF EXCAVATION FOR FURTHER DETAILS AS TO WHAT MAY BE REQUIRED. CHAIN OR METAL STRAPPING WILL NOT BE ALLOWED.
- CONTRACTOR SHALL HYDRO VAC THE EXISTING PHILLIPS 66 PIPELINE PRIOR TO CONSTRUCTION TO DETERMINE LOCATION AND DEPTH OF THE EXISTING PIPELINE.

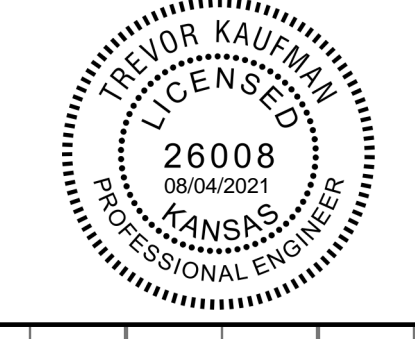
CHECKED	BY	DATE
CHECKED		

CHECKED	BY	DATE
CHECKED		

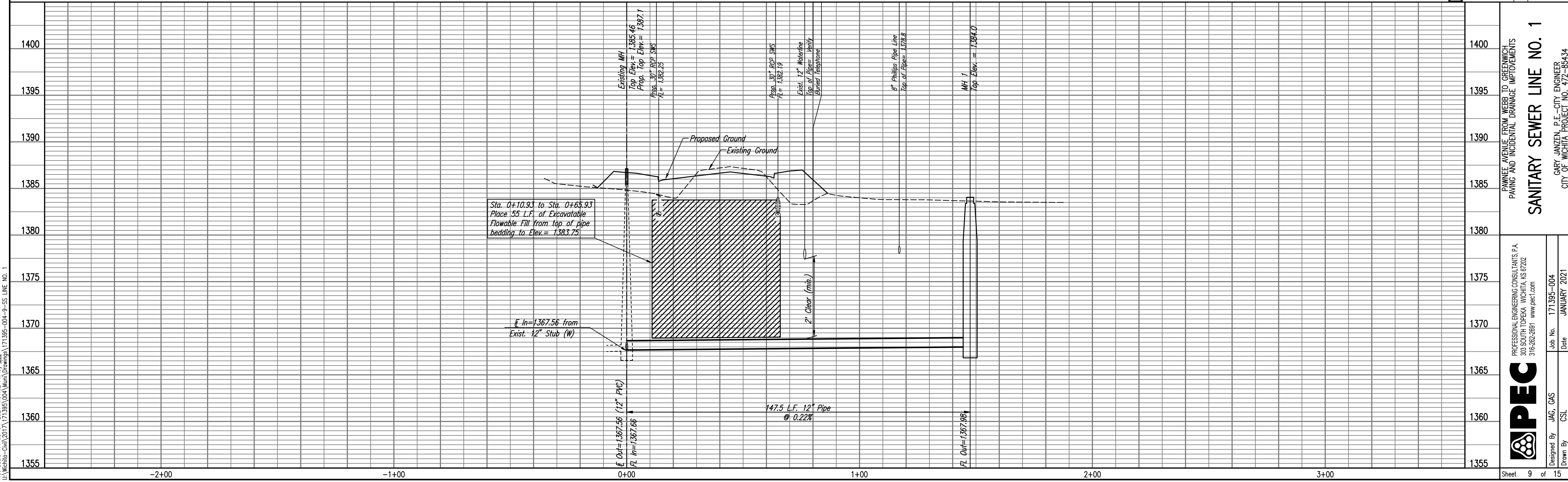
BRENTWOOD SOUTH ADDITION
 Brentwood South HOA
 C-58072
 Lot 23

SSM #2 Concrete Manhole
 Top=1385.46
 12" PVC (N) FL Out=1367.56
 12" Stub (W) FL In=1367.56

SANITARY SEWER LINE NO. 1



No.	Revision	By	Date
1	REVISION #1	TBK	8/4/21



SANITARY SEWER LINE NO. 1
 PAWNEE AVENUE FROM WEBB TO GREENWICH
 PAVING AND INCIDENTAL DRAINAGE IMPROVEMENTS
 GARY JANZEN, P.E. - CITY ENGINEER
 CITY OF WICHITA PROJECT NO. 472-85434

PEC
 PROFESSIONAL ENGINEERING CONSULTANTS, P.A.
 303 SOUTH TOPEKA WICHITA, KS 67202
 316-262-2691 www.pec1.com

Job No. 171395-004
 Date JANUARY 2021

Designed By JAC, OAS
 Drawn By CSL

Saved: 08-04-2021 4:48:36 PM by: KIPRIS/DEKAT
 Plot Scale: 1" = 08'-04" = 2021 4:51:02 PM by: BJS
 U:\Wichita-Civil\2017\171395\004\Wm\Drawings\171395-004-SS LINE NO. 1