

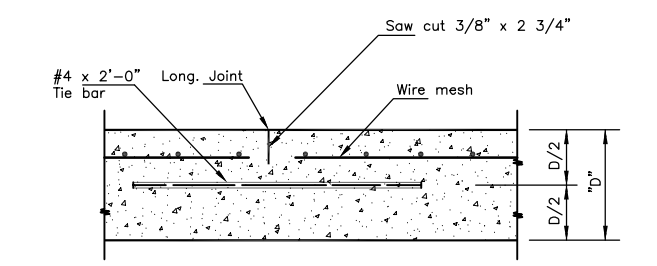
DETAIL OF LAP FOR WIRE MESH

NOTE: The lap shall extend beyond the first transverse wire of each sheet.

The sheets shall be wired securely at the edges and at intervals not to exceed 2'-6" for the full width of the sheet. Approx. weight of wire mesh = 44 lbs. per 100 sq. ft.

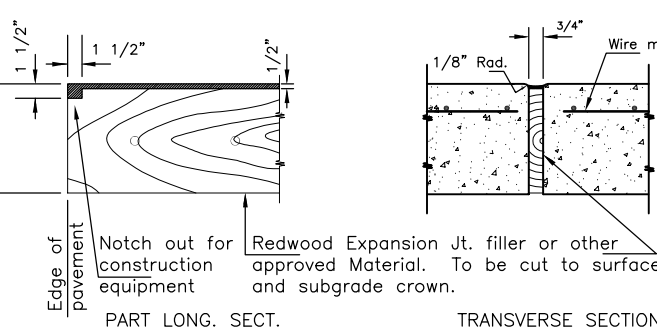
Other methods for fastening the sheets of wire mesh at the laps may be used with the approval of the Engineer.

NOTE: CONTRACTION JOINTS AND EXPANSION JOINTS SHALL BE FORMED IN THE MONOLITHIC CURB AT ALL LOCATIONS WHERE SUCH JOINTS ARE PLACED IN THE PAVEMENT. ADDITIONAL CONTRACTION JOINTS SHALL BE CUT IN THE MONOLITHIC CURB IN UNIFORM LENGTHS NOT EXCEEDING TEN FOOT INTERVALS BETWEEN THOSE JOINTS WHICH COINCIDE WITH JOINTS IN THE PAVEMENT.



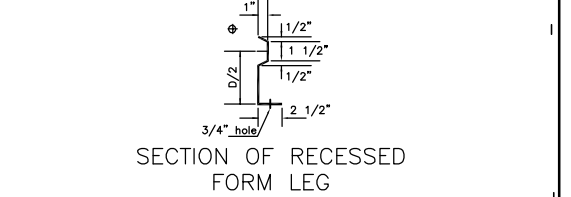
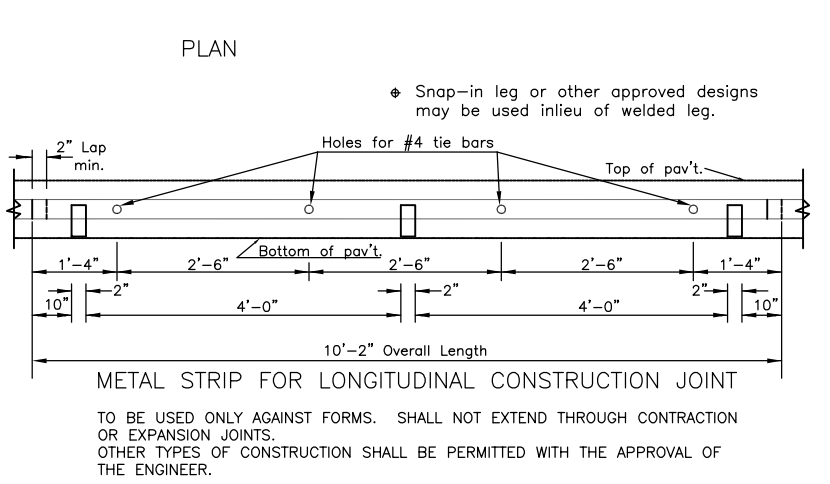
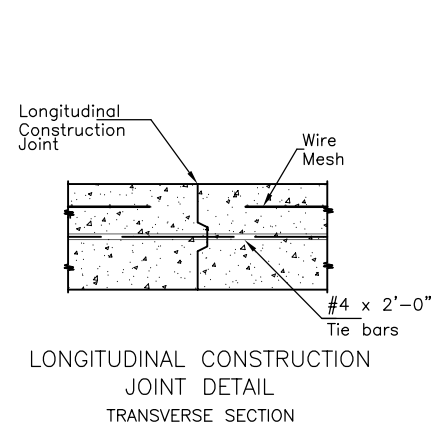
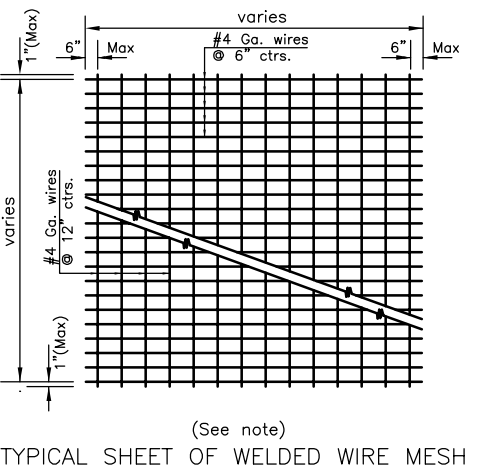
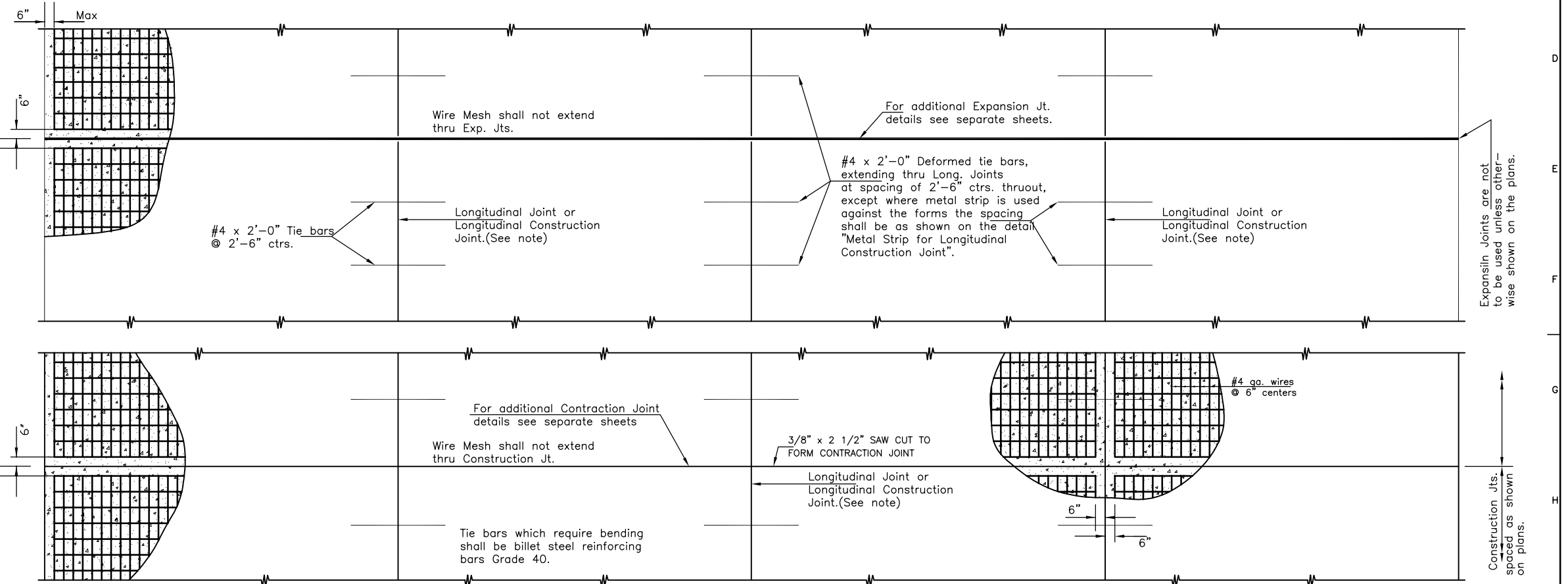
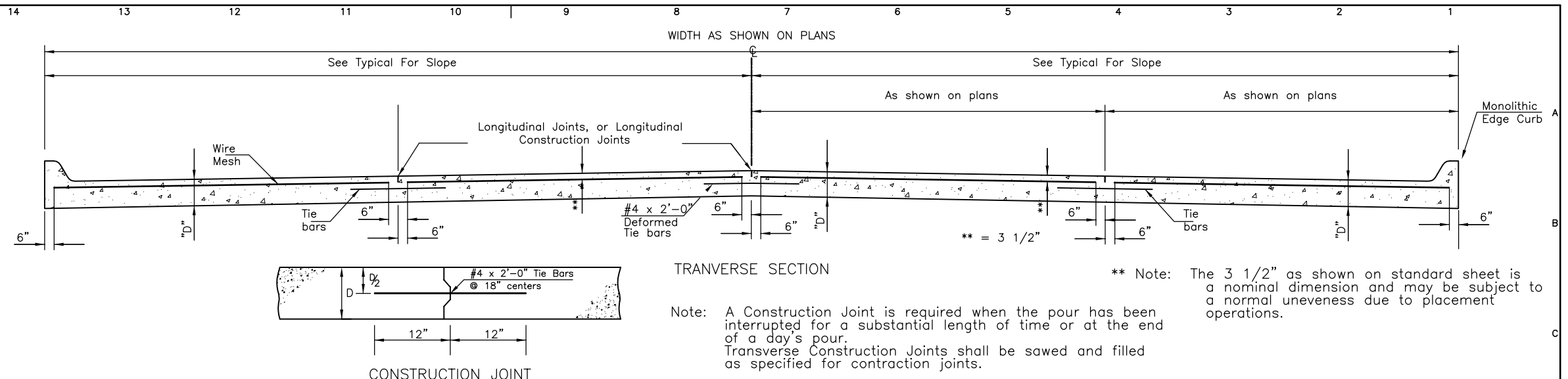
LONGITUDINAL JOINT DETAIL TRANSVERSE SECTION

NOTE: Longitudinal joint formed by sawing 2 3/4" deep and 3/8" wide and filled as specified in standard specifications.



EXPANSION JOINT DETAIL

NOTE: EXPANSION JOINT MATERIAL MUST BE SECURELY HELD IN PLACE BY USING METAL STAKES, METAL PINS, OR BY OTHER APPROVED METHODS SO THAT WHEN THE PAVEMENT IS COMPLETED THE EXPANSION MATERIAL WILL BE PERPENDICULAR TO THE SURFACE OF THE COMPLETED PAVEMENT. CONCRETE SHALL BE HAND PLACED ON EACH SIDE OF THE EXPANSION JOINT MATERIAL IN A MANNER THAT WILL PRECLUDE DISPLACEMENT OF THE EXPANSION JOINT MATERIAL.



NO.	BY	DATE	DESCRIPTION
0	DLM	10/17/05	ISSUE FOR CONSTRUCTION
	MJV	4/28/07	CONFORMING TO CONSTRUCTION RECORDS DELETED AIR RELEASE VAULT, ADDED 1'-0" TO EAST SIDE OF VALVE VAULT.

DESIGNED BY	DLM	CHECKED BY	DLM
DRAWN BY		BDM	DATE
PROJECT	0301030310	CONTRACT	
DRAWING	C11	REVISION	0

ENGINEERING CONSULTANTS

CITY OF WICHITA, KANSAS
15th STREET PUMP STATION AND FORCE MAIN

CONCRETE PAVING DETAILS

CONFORMING TO CONSTRUCTION RECORDS 4/20/07

CITY ENGINEER'S OFFICE
CITY HALL - 2ND FLOOR
15TH STREET PUMP STATION
WICHITA, KANSAS 67202
(316) 268-5114 Fax

DESIGNED BY	DLM	CHECKED BY	DLM
DRAWN BY		BDM	DATE
PROJECT	0301030310	CONTRACT	
DRAWING	C11	REVISION	0

FILE: S:\ENVR\03310\BVG\DWG\03310_C11-CONC_PAV_DTL.dwg 09/30/2005 09:48:37 AM CST