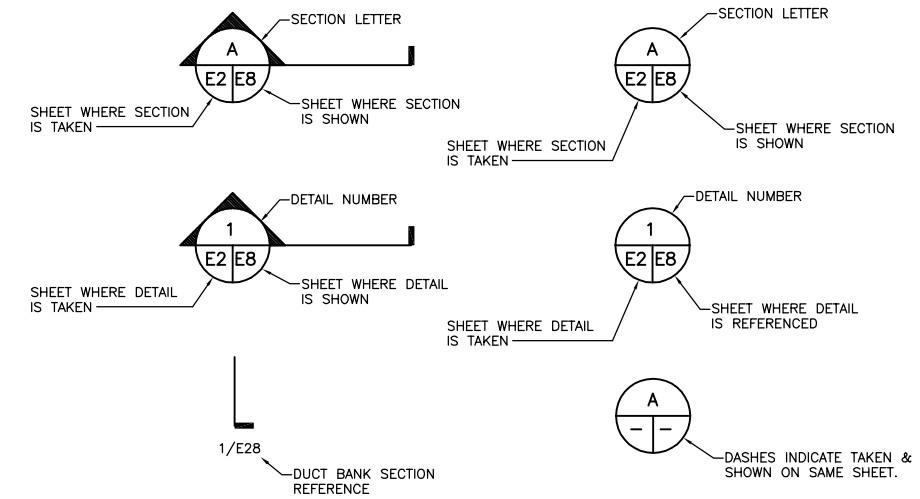


SYMBOL LIST			
SYMB.	DESCRIPTION	MOUNTING OR AS INDICATED	
LIGHTING		STRIP FLUORESCENT LIGHT W/LETTER DESIG.	SURFACE
		FLUORESCENT LIGHT FIXT. W/LETTER DESIG.	WALL
		LIGHT FIXTURE WITH LETTER DESIGNATION	RECESSED OR SURFACE
		LIGHT FIXTURE WITH LETTER DESIGNATION	WALL
		EMERGENCY LIGHT FIXTURE W/LETTER DESIG.	WALL OR CEILING
		EXIT LIGHT W/LTR. DESIG. (SHADE IND. FACE)	CEILING
WIRING DEVICES		SINGLE POLE SWITCH	WALL - 48" AFF
		MANUAL STARTER W/ OVERLOADS & GREEN RUN LIGHT	WALL - 48" AFF
		WEATHERPROOF HORSE POWER RATED TOGGLE SWITCH	
		SINGLE RECEPTACLE	WALL - 18" AFF
		DUPLEX RECEPTACLE (20 AMP)	WALL - 18" AFF
		QUAD-PLEX RECEPTACLE	WALL - 18" AFF
		GFI DUPLEX RECEPTACLE (20 AMP)	WALL - 18" AFF
		SPECIAL OUTLET (SEE SCHEDULE)	WALL
		TELEPHONE OUTLET	WALL - 18" AFF
	POWER DISTRIBUTION		JUNCTION BOX
		JUNCTION BOX	WALL
		PULL BOX	
		SAFETY SWITCH (NON-FUSED)	AS NOTED
		SAFETY SWITCH (FUSED)	AS NOTED
		MAGNETIC STARTER	AS NOTED
		MOTOR	
		MOTORIZED DAMPER	
OTHER		COPPER CLAD GROUND ROD WITH GROUND WELL.	EARTH
		MAGNETIC DOOR CONTACT-SENTROL #1045W OR EQUAL	DOOR
		MOTION DETECTOR/PHOTOCELL RAB #STUFF180HL	AS NOTED

ABBREVIATIONS	
SYMB.	DESCRIPTION
AFF	ABOVE FINISHED FLOOR
AFG	ABOVE FINISHED GRADE
EMT	ELECTRICAL METALLIC TUBING
FVNR	FULL VOLTAGE NON REVERSING
GFI	GROUND FAULT INTERRUPTER
GND	GROUND
HD	HEAVY DUTY
HP	HORSEPOWER
MCP	MOTOR CIRCUIT PROTECTOR (MAGNETIC ONLY)
RGS	RIGID GALVANIZED STEEL
TM	THERMAL MAGNETIC SHORT CIRCUIT OVER CURRENT PROTECTION
TVSS	TRANSIENT VOLTAGE SURGE SUPPRESSER
WP	WEATHER PROOF



TYPICAL SECTION OR DETAIL REFERENCE

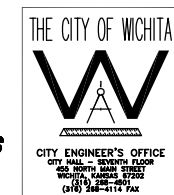
GENERAL NOTES

1. CONDUIT SIZE SHALL BE MINIMUM 3/4". CONDUCTOR SIZE SHALL BE MINIMUM #10 CU AWG. CONDUIT AND CONDUCTOR SIZES AT HOMERUN SHALL BE CARRIED THROUGHOUT ENTIRE CIRCUIT RUN.

INSTRUMENT IDENTIFICATION LETTERS					TYPICAL INSTRUMENT SYMBOLS		
FIRST LETTER	MEASURED OR INITIATING VARIABLE		SECOND LETTER	OUTPUT FUNCTION	MODIFIER	SYMBOL	DESCRIPTION
	MEASURED OR INITIATING VARIABLE	MODIFIER					
A	ANALYSIS		ALARM				INSTRUMENT LOCATED IN FIELD
C				CONTROL			INSTRUMENT MOUNTED ON PRIMARY PANEL
E	VOLTAGE		PRIMARY ELEMENT				INSTRUMENT MOUNTED INSIDE PRIMARY PANEL
H	HAND (MANUALLY INITIATED)				HIGH		INSTRUMENT LOCATED ON LOCAL/AUXILIARY PANEL
I	CURRENT (ELECTRICAL)		INDICATE	CONTROL STATION			INSTRUMENT MOUNTED INSIDE LOCAL/AUXILIARY PANEL
K	TIME OR TIME-SCHEDULE						DIRECT CONNECTED PROCESS SWITCH
L	LEVEL		LIGHT (PILOT)		LOW		FIELD TRANSMITTER
P	PRESSURE OR VACUUM		POINT (TEST CONNECTION)				HAND SWITCH (HAND - OFF - AUTO)
R	RUN OR RADIOACTIVITY	RATIO	RECORD OR PRINT				
S	SPEED OR FREQUENCY	SAFETY		SWITCH			
T	TEMPERATURE			TRANSIT			
X	UNCLASSIFIED		UNCLASSIFIED	UNCLASSIFIED	UNCLASSIFIED OR RECEIVER		
Z	POSITION			DRIVER, ACTUATOR, UNCLASSIFIED CONTROL ELEMENT			

LINE TYPES	
	PROCESS CONNECTED
	INST. SIGNAL - 4-20 MA

* SELECT VARIABLE FROM VARIABLE TYPE COLUMN IN INSTRUMENT IDENTIFICATION TABLE



CONFORMING TO
CONSTRUCTION RECORDS
4/20/07

NO.	BY	DATE	DESCRIPTION
0	DLM	10/17/05	ISSUE FOR CONSTRUCTION
	MJV	4/28/07	CONFORMING TO CONSTRUCTION RECORDS DELETED AIR RELEASE VAULT, ADDED 1'-0" TO EAST SIDE OF VALVE VAULT.



CITY OF WICHITA, KANSAS
15th STREET PUMP STATION
AND FORCE MAIN

ELECTRICAL LEGENDS

DESIGNED BY	BH	CHECKED BY	SLA
DRAWN BY	MJV	DATE	JUNE, 2005
PROJECT	0301030310	CONTRACT	-
DRAWING	E1	REVISION	0