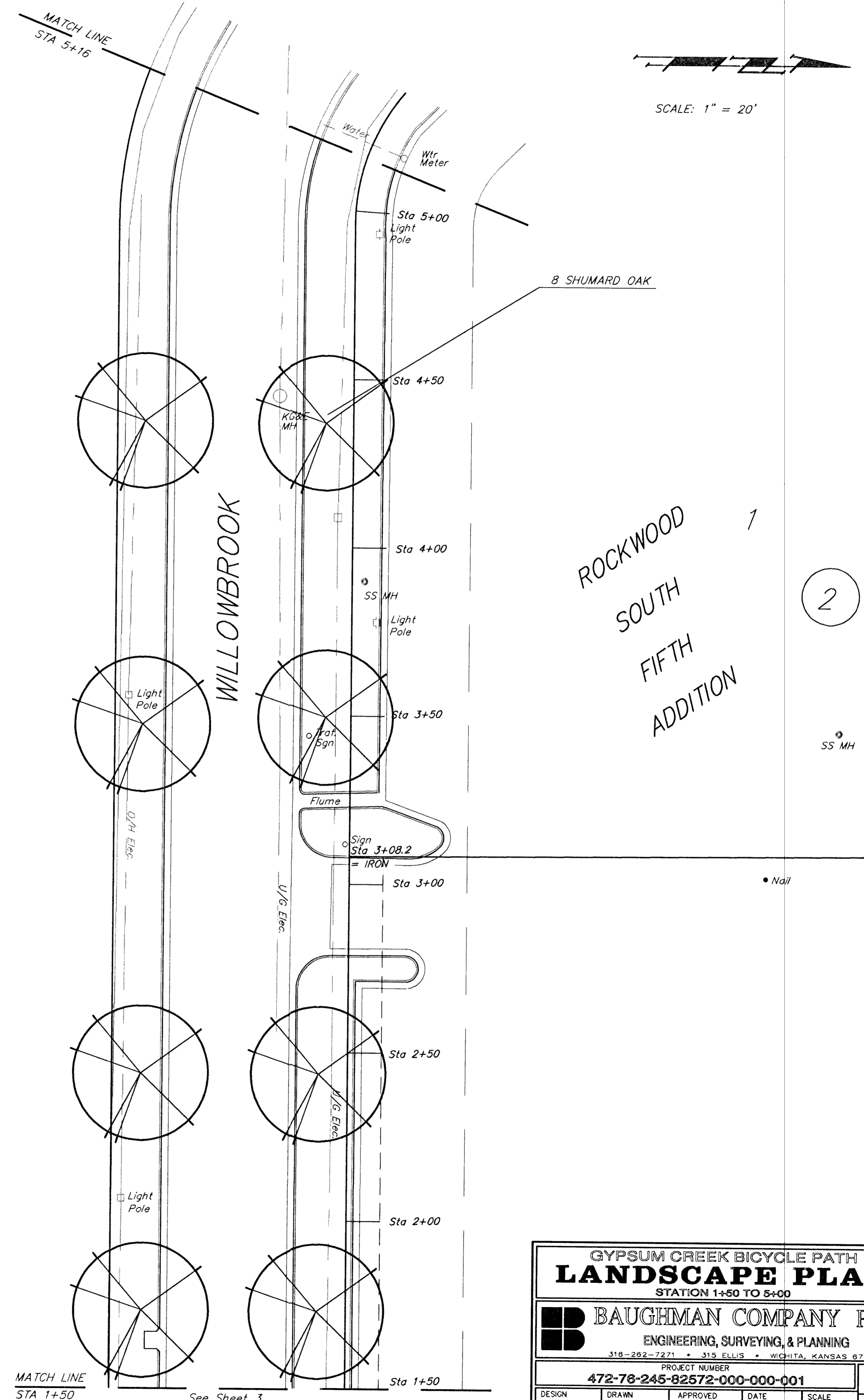


PLANT SCHEDULE

QTY.	BOTANICAL NAME	COMMON NAME	SIZE	CONDITION	REMARKS
8	<i>Betula nigra</i> 'Heritage'	River Birch	2" CAL.	B & B	Single Stem Only
4	<i>Fraxinus pennsylvanica</i> 'Marshall's Seedless'	Marshall's Seedless Ash	2" CAL.	B & B	Single Stem Only
7	<i>Gleditsia triacanthos</i> var. <i>inermis</i> 'Imperial'	Imperial Honeylocust	2" CAL.	B & B	Single Stem Only
15	<i>Gleditsia triacanthos</i> var. <i>inermis</i> 'Skyline'	Skyline Honeylocust	2" CAL.	B & B	Single Stem Only
3	<i>Quercus imbricaria</i>	Shingle Oak	2" CAL.	B & B	Single Stem Only
8	<i>Quercus shumardii</i>	Shumard Oak	2" CAL.	B & B	Single Stem Only
13	<i>Taxodium distichum</i>	Bald Cypress	2" CAL.	B & B	Single Stem Only
11	<i>Ulmus parvifolia</i>	Lacebark Elm	2" CAL.	B & B	Single Stem Only
18	<i>Juniperus virginiana</i> 'Canaert'	Canaert Juniper	5'-5 1/2' HT	B & B	Single Stem Only
14	<i>Pinus strobiformis</i>	Southwestern White Pine	6'-6 1/2' HT	B & B	Single Stem Only
34	<i>Cercis reniformis</i> 'Oklahoma'	Oklahoma Redbud	1 1/2" CAL	B & B	Single Stem Only
26	<i>Crataegus crusgalli</i> var. <i>inermis</i>	Thornless Cockspur Hawthorn	1 1/2" CAL	B & B	Single Stem Only
7	<i>Crataegus viridis</i> 'Winter King'	Winter King Hawthorn	1 1/2" CAL	B & B	Single Stem Only
10	<i>Euonymus bungeanus</i>	Winterberry Euonymus	1 1/2" CAL	B & B	Single Stem Only
6	<i>Koeleruteria paniculata</i>	Goldenrain Tree	1 1/2" CAL	B & B	Single Stem Only
23	<i>Malus 'Prairiefire'</i>	Prairiefire Crabapple	1 1/2" CAL	B & B	Single Stem Only
21	<i>Malus 'Snowdrift'</i>	Snowdrift Crabapple	1 1/2" CAL	B & B	Single Stem Only
14	<i>Syringa reticulata</i> 'Ivory Silk'	Ivory Silk Tree Lilac	1 1/2" CAL	B & B	Single Stem Only
12	<i>Salix interior</i>	Sandbar Willow	BAREROOT		
21	<i>Berberis thunbergii</i> atropurpurea 'Rose Glow'	Red Barberry	2 GALLON	CONT	
23	<i>Cornus sericea</i> var. 'Alleman'	Redtwig Dogwood	2 GALLON	CONT	
6	<i>Spiraea x bumalda</i> 'Goldflame'	Goldflame Spirea	2 GALLON	CONT	
5005	<i>Euonymus fortunei</i> var. 'Coloratus'	Purpleleaf Wintercreeper	4" POTS	CONT	12" on center
20	<i>Hemerocallis</i> spp. 'Black Eyed Stella'	Daylily	1 GALLON	CONT	18" on center
26	<i>Rosa</i> spp. 'Scarlet Meidiland'	Scarlet Meidiland Rose	2 GALLON	CONT	30" on center
32	<i>Rudbeckia fulgida</i> 'Goldstrum'	Rudbeckia	1 GALLON	CONT	18" on center

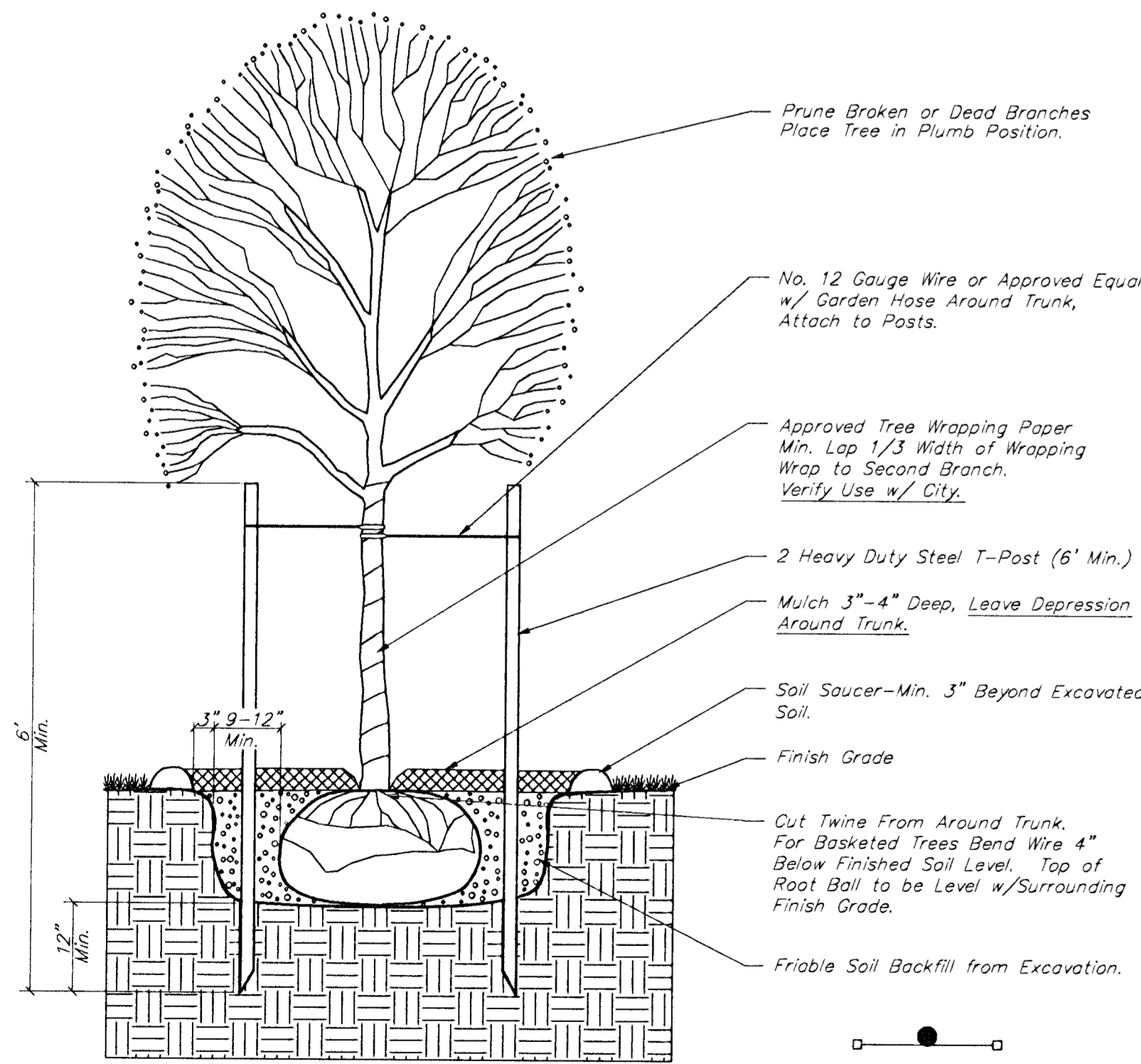
TREE STATIONING

STATION	NAME	OFFSET
1+73	Shumard Oak	9' LT
1+73	Shumard Oak	61' RT
2+43	Shumard Oak	8' LT
2+43	Shumard Oak	61' LT
3+49	Shumard Oak	8' LT
3+49	Shumard Oak	61' LT
4+37	Shumard Oak	8' LT
4+37	Shumard Oak	61' LT

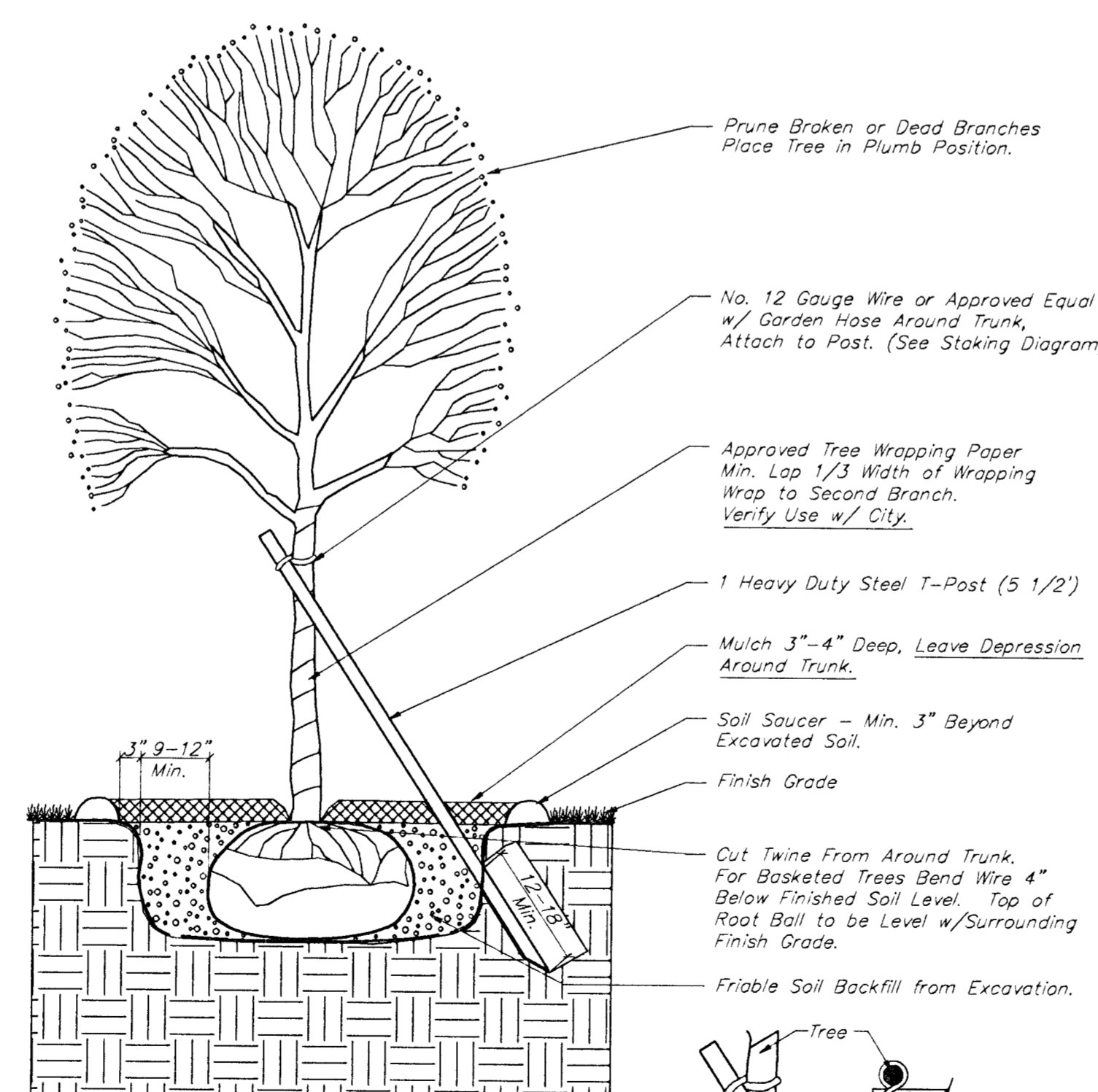


PLANT SCHEDULE (SHEET TOTAL)

QTY.	BOTANICAL NAME	COMMON NAME
8	<i>Quercus shumardii</i>	Shumard Oak



STAKING PLAN SCHEMATIC
Verify Orientation w/ City



STAKING DIAGRAM
Verify Orientation w/ City

TREE PLANTING & STAKING DETAIL
Deciduous Trees Larger than 2" Cal.
Evergreen Trees Larger than 6' Height
No Scale

TREE PLANTING & STAKING DETAIL
Deciduous Trees 2" Cal. and Smaller
Evergreen Trees 6' Height and Smaller
No Scale

**GYPSUM CREEK BICYCLE PATH
LANDSCAPE PLAN**
STATION 1+50 TO 5+00

BAUGHMAN COMPANY P. A.
ENGINEERING, SURVEYING, & PLANNING
318-282-7271 • 315 ELLIS • WICHITA, KANSAS 67211

PROJECT NUMBER
472-78-245-82572-000-000-001

DESIGN	DRAWN	APPROVED	DATE	SCALE
	BAM		5/96	1"=20'

SHEET **7** OF **11**