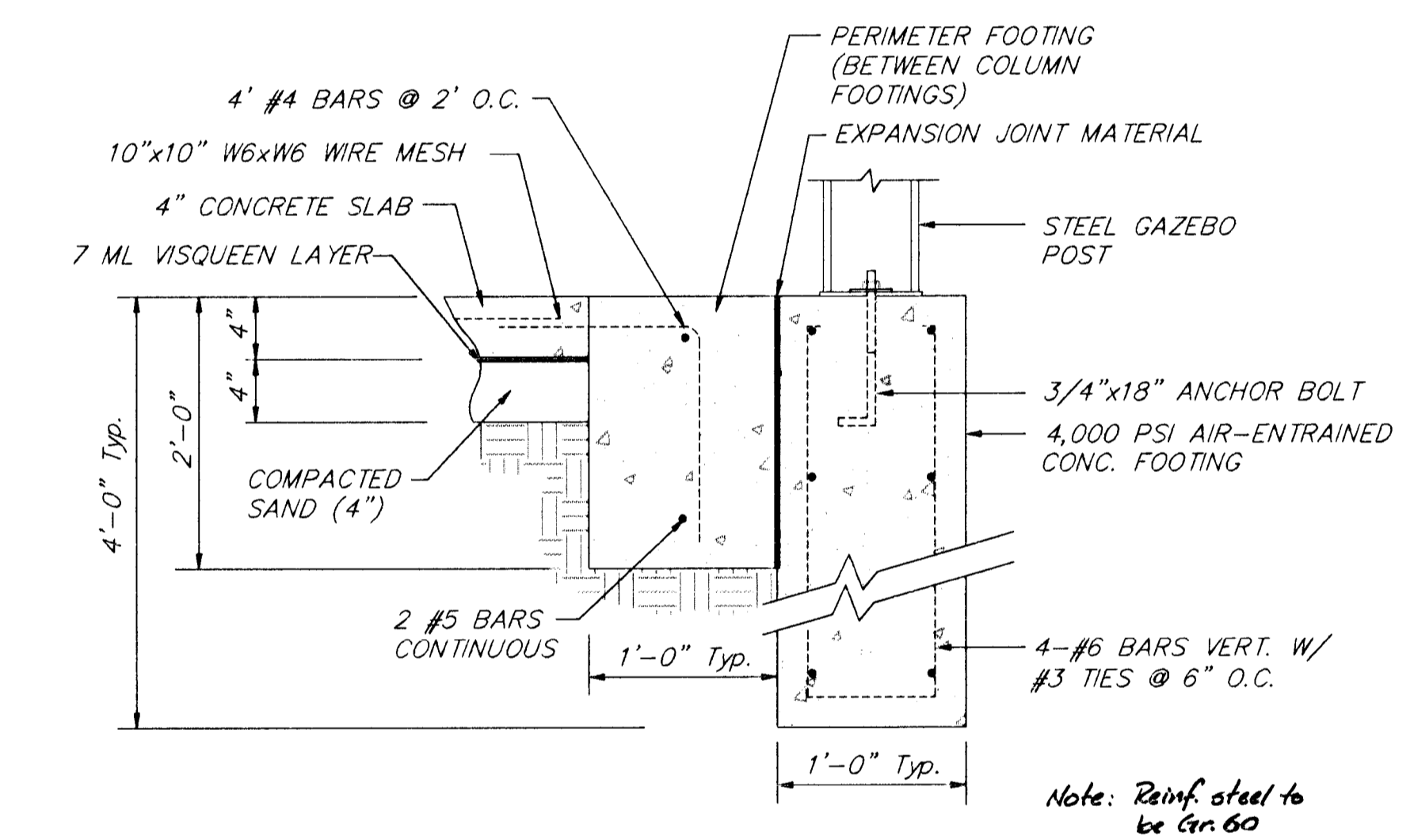


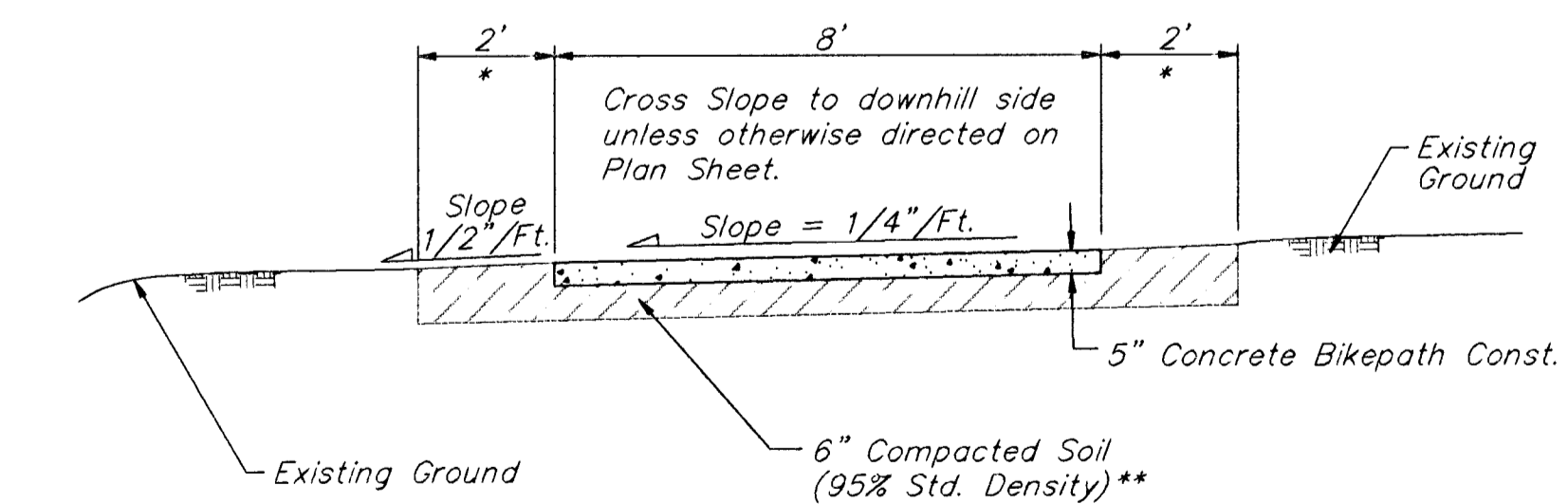
**GAZEBO DETAIL**

NO SCALE



**FOOTING AND SLAB DETAIL**

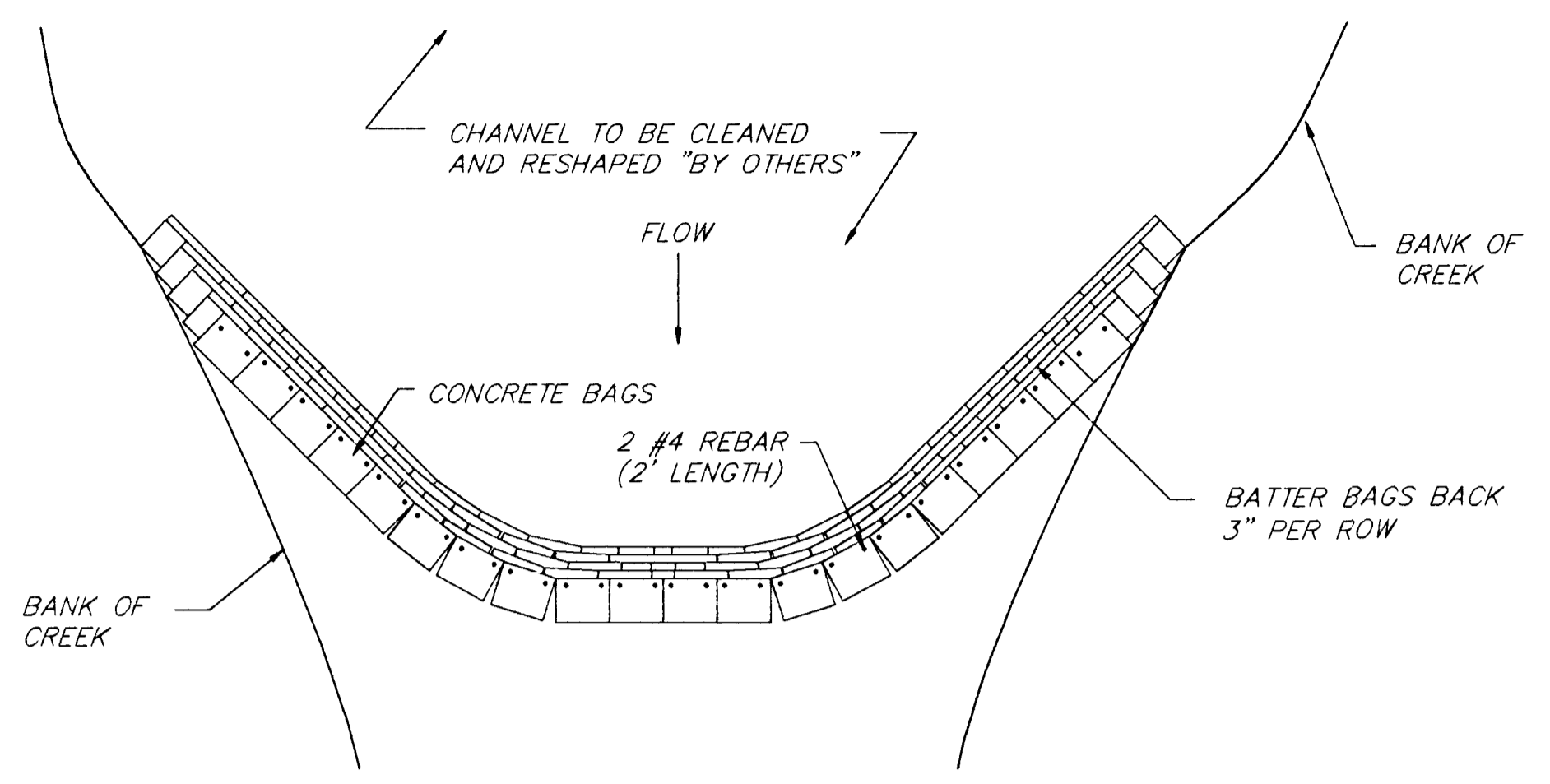
FOOTING TYP. 6 PLACES  
NO SCALE



**TYPICAL WALK SECTION**

NO SCALE

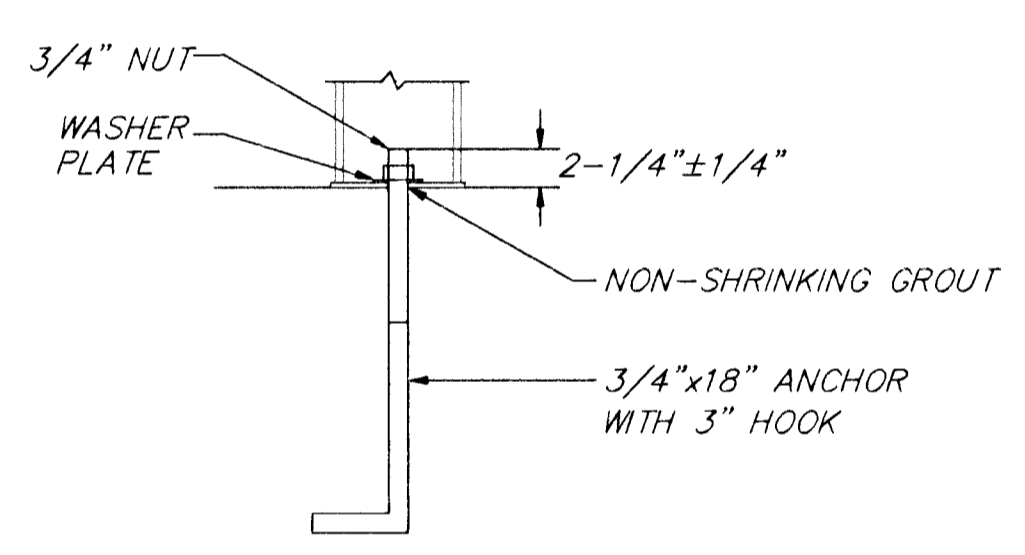
\* 2' Clear Shoulders should be maintained on both sides of 8' Path unless otherwise directed on plans.  
\*\* All Work to be Incidental to the Pavement Bid Items



**CONCRETE BAG WALL DETAIL**

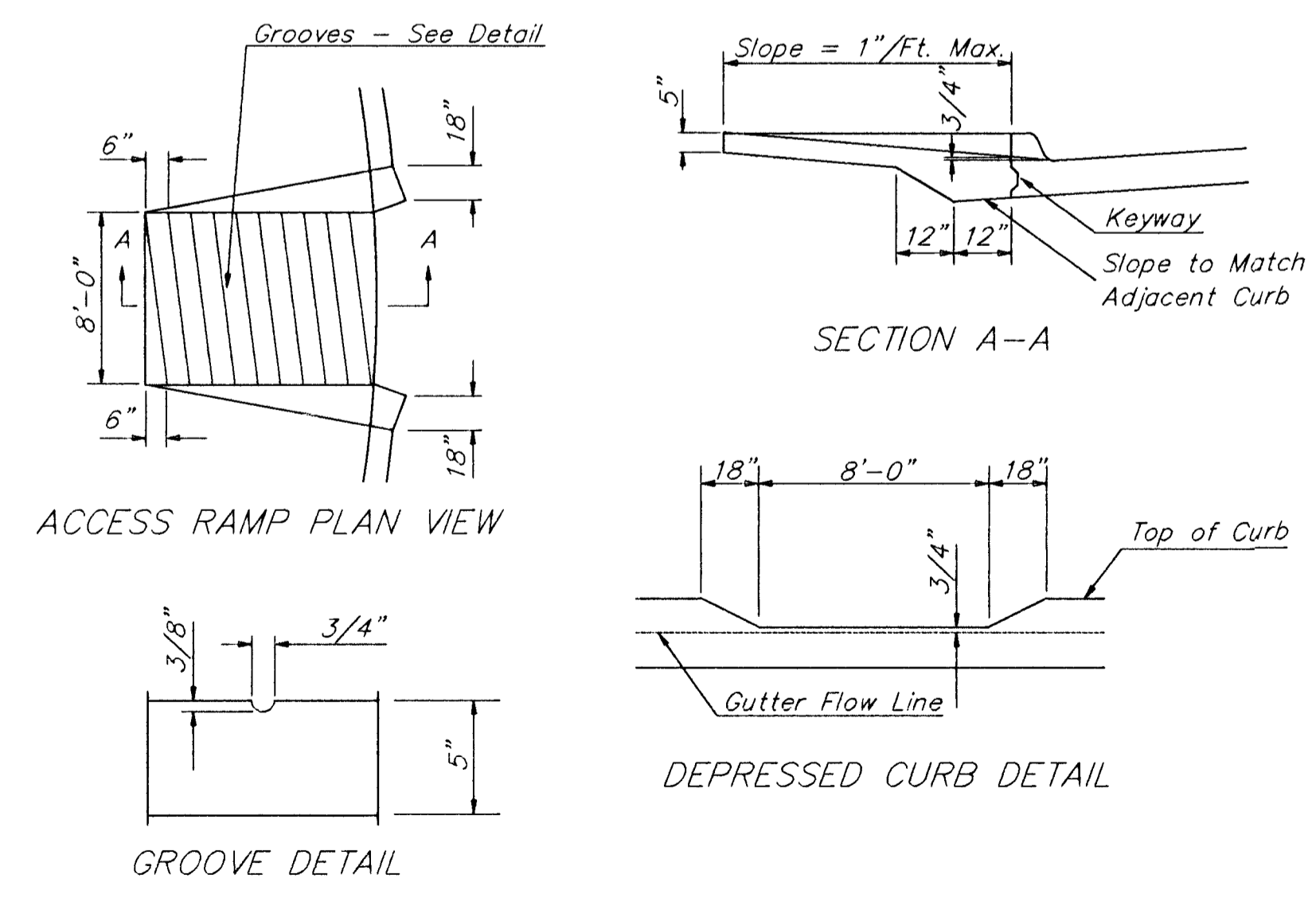
NO SCALE

NOTE:  
CONTRACTOR TO VERIFY AMOUNT OF CONCRETE BAGS NEEDED IN ORDER TO DAM WATER NO DEEPER THAN 18". VERIFY SHAPE OF POND (RESHAPING TO BE DONE "BY OTHERS")



**ANCHOR DETAIL**

NO SCALE



**ACCESS RAMP DETAIL**

NO SCALE

**PLANTING NOTES:**

- All landscape work shall be done in accordance with industry standards.
- All disturbed areas shall be seeded, fertilized, and mulched as follows:  
SEED--  
Sharp's Improved Buffalograss Seed 1.5 lbs. per 1,000 s.f.  
FERTILIZER--  
5% Nitrogen, 12% Phosphorous, 12% Potassium 40#/acre  
Areas called out on the plans to receive Erosion Control Netting shall be seeded as follows:  
SEED--  
Sharp's Improved Buffalograss Seed 2 lbs. per 1,000 s.f.  
FERTILIZER--  
5% Nitrogen, 12% Phosphorous, 12% Potassium 40#/acre  
EROSION NETTING--  
C125BN BioNet fiber netting by North American Green, Evansville, Indiana (1-800-772-2040) (or approved equal)
- Trees with a broken leader or without a central leader will not be accepted.
- Use triangular spacing on all Ground Cover Beds.
- All planting beds shall be prepared by killing all existing vegetation with Round-Up (or equal) according to label directions. A Pre-emergent herbicide such as Treflan (5%) (or equal) shall be applied per label directions. All planting beds to receive 2" organic matter (such as peat moss, compost, or humus) and shall be rototilled in to a depth of 8". Cost to be incidental to shrub or groundcover costs in bid items.
- Mulch all planting beds with 2" of mulch. Mulch all tree saucer wells with 4" of mulch. Mulch material to be shredded hardwood mulch of uniform consistency. Cost to be incidental to plant costs in the bid items.
- Plastic edging shall be used to separate turf areas from planting beds at Gazebo Area only. Edging shall be Cobra Commercial Heavy Duty Grade from Old Dutch Materials Company or approved equal. Cost to be incidental to groundcover items in the bid items.
- Topsoil hauled onto site shall be fertile, friable, natural loam topsoil, of uniform quality characteristic of representative local soils which produce heavy growth of crops, grass, or other vegetation. It shall be free trash, or other matter toxic to plant growth.
- Topsoil shall be delivered in an unfrozen and non-muddy condition and shall be subject to approval by the Landscape Architect.
- Prior to any excavation for landscaping purposes the location of underground utilities shall be determined by calling Kansas One Call at 1-800-344-7233. Contractor shall be responsible for any damage done to existing utilities. Utilities shown on the plans represent the best information obtainable for design. Contractor to contact Property Owners with underground sprinkler systems in public right-of-way. Contractor to give Property Owners an opportunity to move or adjust sprinkler system components in conflict with proposed landscaping. Contractor may move proposed trees to avoid utility or sprinkler conflicts to new location approved by Landscape Architect.
- Channel cleaning and reshaping shall be done by the Wichita Public Works Maintenance Department. Please Contact Suzanne Loomis at 268-4422 with any questions or for a time schedule.
- Report any discrepancies in the planting plan to the Landscape Architect, prior to starting construction.

**GAZEBO NOTES:**

- Gazebo to be #GOX 28 M, as manufactured by Paligon, W.H. Porter, Inc. (or approved equal) (616-399-1963 or Local Rep. 800-457-4215). Gazebo to be 28' hexagonal "Oxford Series" with metal cupola, "Sarasota" top and eave railings (no ground railing). Metal Roof color to be selected by Landscape Architect from standard paint chart. Manufacturer to provide all Gazebo components, detailed installation plans, and Engineer's Seal for State of Kansas.
- All surfaces (except roof) to be finish painted. Paint to meet City of Wichita Specifications. Color to be black.
- All work including but not limited to painting, footings, installation, incidental hardware, etc. are to be included in the bid item "Gazebo".
- Benches and litter receptacles to be manufactured by Victor Stanley, Inc. (or approved equal) (800-855-8300 or Local Rep. 800-332-4447). See sheet 10 for model numbers.
- Benches and litter receptacles to be permanently mounted per manufacturer's specifications.

<b>GYPSUM CREEK BICYCLE PATH</b>				
<b>DETAILS</b>				
<b>BAUGHMAN COMPANY P.A.</b>				
ENGINEERING, SURVEYING, & PLANNING				
316-282-7271 • 315 ELLIS • WICHITA, KANSAS 67211				
PROJECT NUMBER				
<b>472-78-245-82572-000-001</b>				
DESIGN	DRAWN	APPROVED	DATE	SCALE
	BAM		5/96	NOTED
				SHEET <b>11</b> OF <b>11</b>