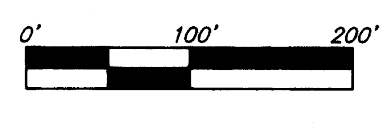


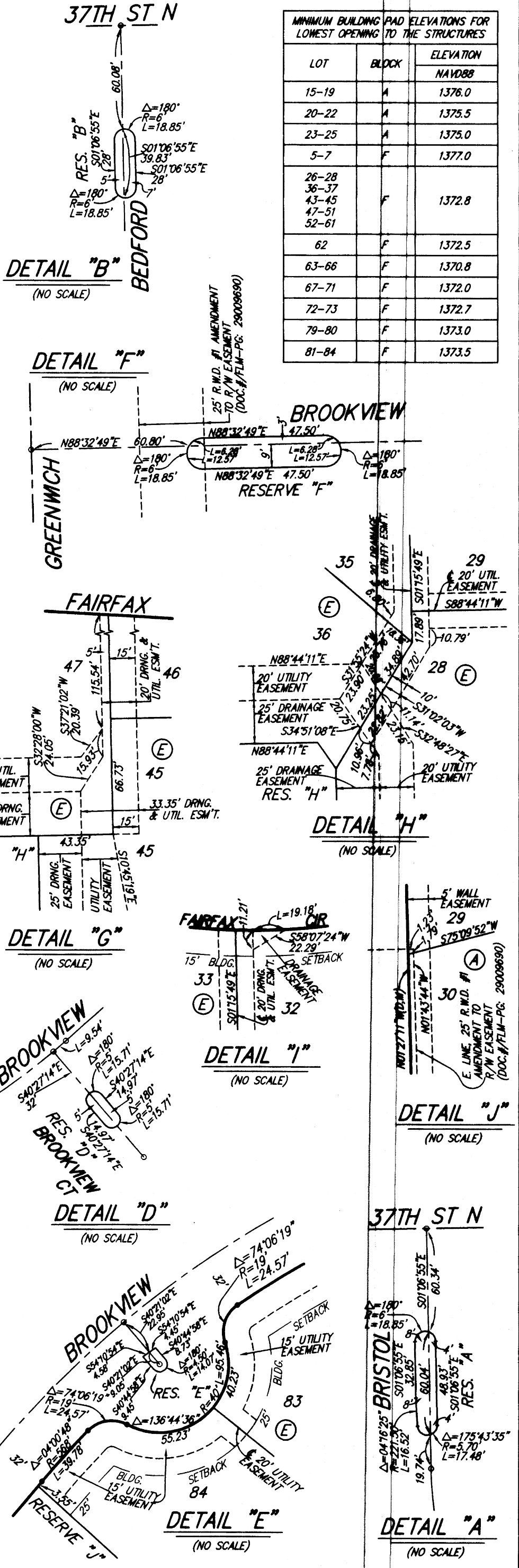
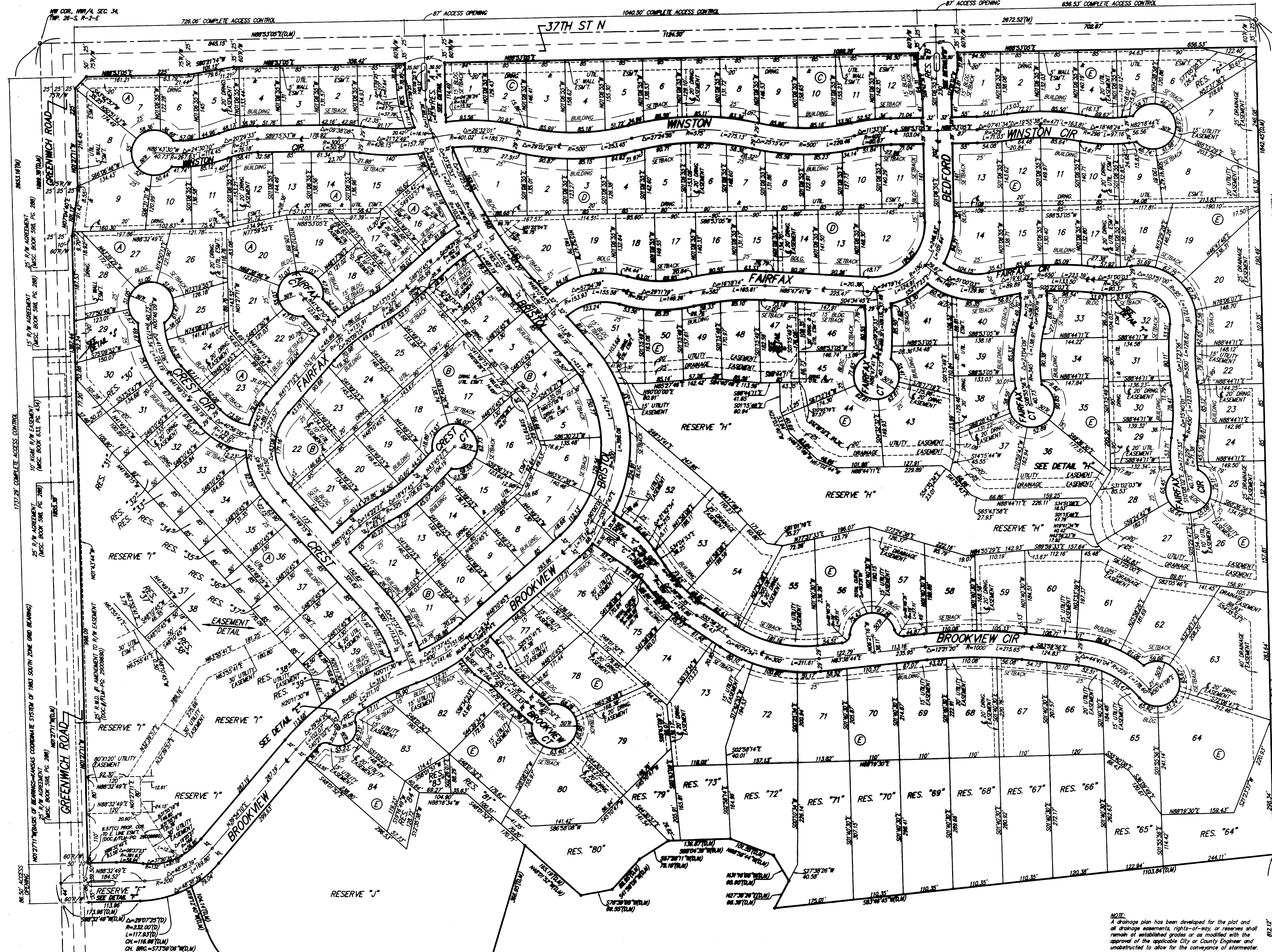
BROOKFIELD ADDITION WICHITA, SEDGWICK COUNTY, KANSAS

- #4 REBAR W/ "BAUGHMAN" CAP (SET)
 - 1" IRON PIPE (FOUND)
 - 2" ALUMINUM "SEDGWICK COUNTY" CAP (FOUND)
 - △ STONE (FOUND)
 - #6 REBAR (FOUND)
- (M) = MEASURED
 (D) = DESCRIBED
 (P) = PLATTED



MINIMUM BUILDING PAD ELEVATIONS FOR LOWEST OPENING TO THE STRUCTURES

LOT	BLOCK	ELEVATION
15-19	A	1376.0
20-22	A	1375.5
23-25	A	1375.0
5-7	F	1377.0
26-28	F	1372.8
36-37	F	1372.8
43-45	F	1372.8
47-51	F	1372.8
52-61	F	1372.8
62	F	1372.5
63-66	F	1370.8
67-71	F	1372.0
72-73	F	1372.7
79-80	F	1373.0
81-84	F	1373.5



15' P.W. AGREEMENT (MISC. BOOK 586, P.C. 288)
 10' WIDE P.W. EASEMENT (MISC. BOOK 633, P.C. 430)
 25' P.W. AGREEMENT (MISC. BOOK 586, P.C. 288)
 15' P.W. AGREEMENT (MISC. BOOK 586, P.C. 288)
 10' WIDE P.W. EASEMENT (MISC. BOOK 633, P.C. 430)
 25' P.W. AGREEMENT (MISC. BOOK 586, P.C. 288)
 15' P.W. AGREEMENT (MISC. BOOK 586, P.C. 288)
 10' WIDE P.W. EASEMENT (MISC. BOOK 633, P.C. 430)
 25' P.W. AGREEMENT (MISC. BOOK 586, P.C. 288)
 15' P.W. AGREEMENT (MISC. BOOK 586, P.C. 288)
 10' WIDE P.W. EASEMENT (MISC. BOOK 633, P.C. 430)
 25' P.W. AGREEMENT (MISC. BOOK 586, P.C. 288)

NOTE:
 A drainage plan has been developed for the plot and all drainage easements, rights-of-way, or reserves shall remain at established grades or as modified with the approval of the applicable City or County Engineer and unobstructed to allow for the conveyance of stormwater.

PAGE 2 OF 2

Baughman Company P.A.
 315 E. 5th St., Wichita, KS 67211
 P: 316.262.2119 F: 316.262.0149

Baughman ENGINEERING SURVEYING PLANNING LANDSCAPE ARCHITECTURE

E:\Projects\Brookfield Addition\160471001\Plan\Brookfield_Addition_P2.dwg

PC 262-4R