

BENCHMARKS:
 RR spike in asphalt, SW COR., N1/2,
 SW1/4, Sec. 34, TWP. 26-S, R-2-E.
 Elev. = 1400.59 NAVD88

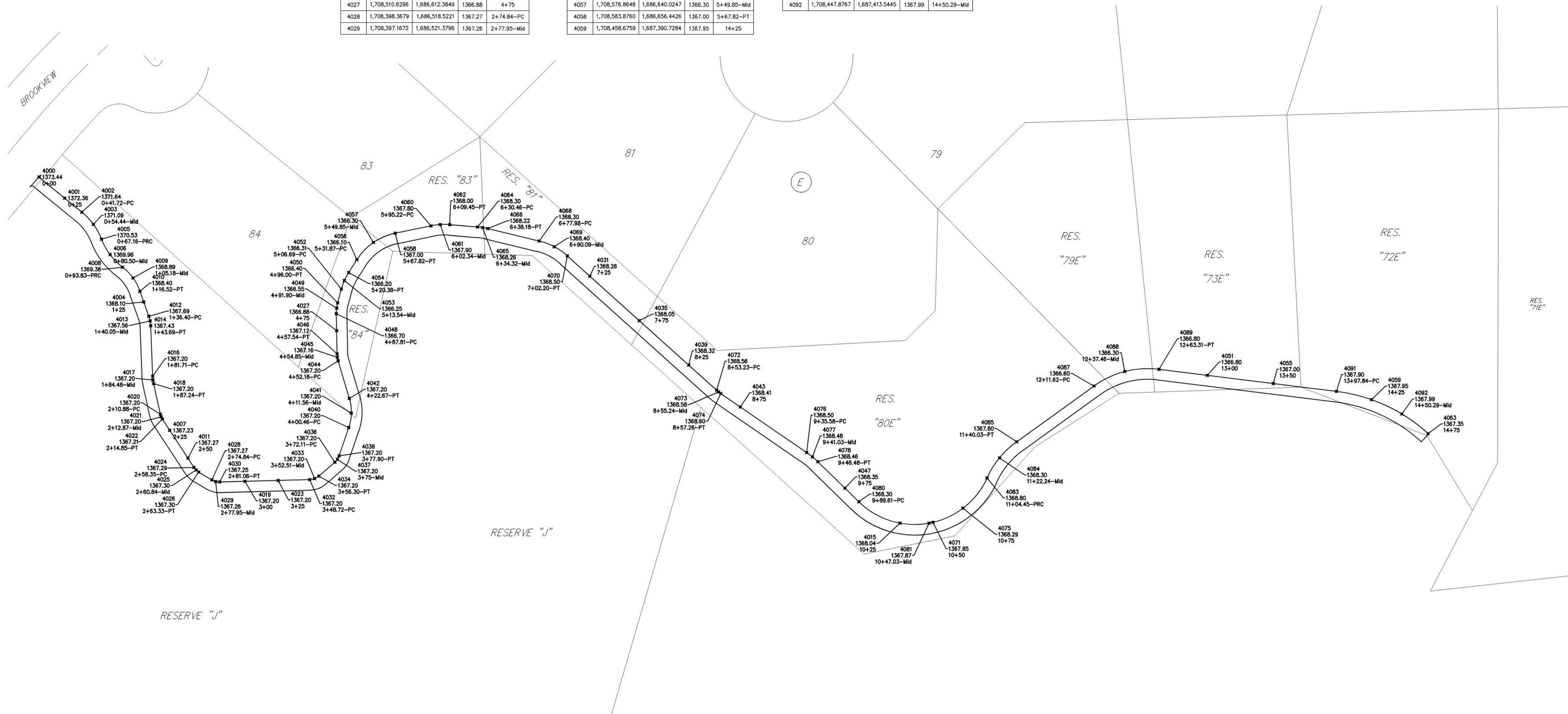
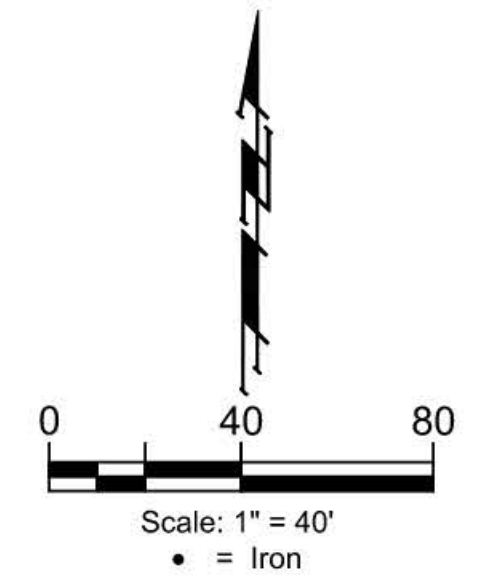
Square cut in top of curb
 North side of Brookview Cir.
 Approx. 14.5' south of the SE cor.
 of Lot 55, Block E, Brookfield Addn.
 Elev. = 1376.51 NAVD88

City of Wichita Benchmark Disk
 in top of curb, North side of
 Brookview Cir. adjacent to fire hydrant
 Approx. 17.8' SW of the SE cor. of
 Lot 58, Block E, Brookfield Addn.
 Elev. = 1376.51 NAVD88

Point #	Northing	Easting	Elevation	Description
4000	1,708,826.1604	1,686,388.4129	1373.44	0+00
4001	1,708,610.3246	1,686,407.7579	1372.36	0+25
4002	1,708,599.7361	1,686,420.6929	1371.64	0+41.72-PC
4003	1,708,590.9175	1,686,429.4124	1371.09	0+54.44-Mid
4004	1,708,532.1713	1,686,467.2805	1368.10	1+25
4005	1,708,579.4007	1,686,435.5306	1370.53	0+67.16-PRC
4006	1,708,567.7916	1,686,442.0127	1369.89	0+80.50-Mid
4007	1,708,435.6131	1,686,486.8397	1367.23	2+25
4008	1,708,558.3013	1,686,451.3254	1369.38	0+93.83-PRC
4009	1,708,550.1666	1,686,459.1746	1368.89	1+05.16-Mid
4010	1,708,540.1607	1,686,464.4345	1368.40	1+16.52-PT
4011	1,708,414.6869	1,686,500.5180	1367.27	2+50
4012	1,708,521.4289	1,686,471.1072	1367.69	1+36.40-PC
4013	1,708,517.9188	1,686,472.0648	1367.56	1+40.05-Mid
4014	1,708,514.3044	1,686,472.4808	1367.43	1+43.69-PT
4015	1,708,365.8496	1,687,036.1086	1368.04	10+25
4016	1,708,476.3136	1,686,473.9527	1367.20	1+81.71-PC
4017	1,708,473.5554	1,686,474.1832	1367.20	1+84.48-Mid
4018	1,708,470.8288	1,686,474.6588	1367.20	1+87.24-PT
4019	1,708,397.3089	1,686,543.3943	1367.20	3+00
4020	1,708,447.7518	1,686,479.7550	1367.20	2+10.88-PC
4021	1,708,445.8591	1,686,480.3566	1367.20	2+12.87-Mid
4022	1,708,444.1054	1,686,481.2887	1367.21	2+14.85-PT
4023	1,708,397.9657	1,686,568.3857	1367.20	3+25
4024	1,708,407.6972	1,686,505.0868	1367.29	2+58.35-PC
4025	1,708,405.7843	1,686,506.6724	1367.30	2+60.84-Mid
4026	1,708,404.2760	1,686,508.6468	1367.30	2+63.33-PT
4027	1,708,510.6296	1,686,612.3849	1366.88	4+75
4028	1,708,398.3679	1,686,518.5221	1367.27	2+74.84-PC
4029	1,708,397.1672	1,686,521.3796	1367.26	2+77.95-Mid

Point #	Northing	Easting	Elevation	Description
4030	1,708,398.8112	1,686,524.4586	1367.25	2+81.06-PT
4031	1,708,551.5528	1,686,802.8223	1368.26	7+25
4032	1,708,398.5890	1,686,592.1003	1367.20	3+48.72-PC
4033	1,708,399.3319	1,686,595.7950	1367.20	3+52.51-Mid
4034	1,708,401.2782	1,686,599.0220	1367.20	3+56.30-PT
4035	1,708,518.1164	1,686,839.9976	1368.05	7+75
4036	1,708,411.6416	1,686,610.9610	1367.20	3+72.11-PC
4040	1,708,437.7369	1,686,621.4516	1367.20	4+00.46-PC
4041	1,708,448.6304	1,686,623.3770	1367.20	4+11.56-Mid
4042	1,708,459.5942	1,686,621.9039	1367.20	4+22.67-PT
4043	1,708,453.2542	1,686,615.9404	1368.41	8+75
4044	1,708,487.8752	1,686,613.5316	1367.20	4+52.16-PC
4045	1,708,490.4986	1,686,612.9434	1367.16	4+54.85-Mid
4046	1,708,493.1772	1,686,612.7124	1367.12	4+57.54-PT
4047	1,708,392.0947	1,686,994.6795	1368.35	9+75
4048	1,708,523.4336	1,686,612.1446	1366.70	4+87.81-PC
4049	1,708,527.5221	1,686,612.3569	1366.55	4+91.90-Mid
4050	1,708,531.5400	1,686,613.1429	1366.40	4+96.00-PT
4051	1,708,476.9797	1,687,267.2564	1366.80	13+00
4052	1,708,541.8579	1,686,615.9299	1366.31	5+06.69-PC
4053	1,708,548.3072	1,686,618.2106	1366.25	5+13.54-Mid
4054	1,708,554.3363	1,686,621.4424	1366.20	5+20.38-PT
4055	1,708,470.8147	1,687,316.8749	1367.00	13+50
4056	1,708,564.0214	1,686,627.6249	1366.10	5+31.87-PC
4057	1,708,576.8648	1,686,640.0247	1366.30	5+49.85-Mid
4058	1,708,583.8760	1,686,656.4426	1367.00	5+67.82-PT
4059	1,708,458.6759	1,687,390.7284	1367.95	14+25

Point #	Northing	Easting	Elevation	Description
4060	1,708,589.4246	1,686,683.2746	1367.80	5+95.22-PC
4061	1,708,590.3660	1,686,690.3250	1367.90	6+02.34-Mid
4062	1,708,590.2973	1,686,697.4375	1368.00	6+09.45-PT
4063	1,708,433.1006	1,687,433.3048	1367.35	14+75
4064	1,708,588.6007	1,686,718.3793	1368.30	6+30.46-PC
4065	1,708,588.1385	1,686,722.2065	1368.26	6+34.32-Mid
4066	1,708,587.3769	1,686,725.9855	1368.22	6+38.18-PT
4068	1,708,577.9838	1,686,764.6659	1368.30	6+77.98-PC
4069	1,708,573.7085	1,686,775.9628	1368.40	6+90.09-Mid
4070	1,708,566.7995	1,686,785.8705	1368.50	7+02.20-PT
4071	1,708,366.4768	1,687,060.9202	1367.85	10+50
4072	1,708,465.8010	1,686,898.1630	1368.56	8+53.23-PC
4073	1,708,464.5040	1,686,899.7028	1368.58	8+55.24-Mid
4074	1,708,463.3097	1,686,901.3236	1368.60	8+57.26-PT
4075	1,708,377.0919	1,687,083.3552	1368.29	10+75
4076	1,708,418.9195	1,686,965.8501	1368.50	9+35.58-PC
4077	1,708,415.6428	1,686,970.2039	1368.48	9+41.03-Mid
4078	1,708,412.0076	1,686,974.2632	1368.46	9+46.48-PT
4080	1,708,381.8945	1,687,005.1374	1368.30	9+89.61-PC
4081	1,708,385.8613	1,687,058.0167	1367.87	10+47.03-Mid
4083	1,708,399.8558	1,687,101.5787	1368.80	11+04.45-PRC
4084	1,708,414.9007	1,687,110.9802	1368.30	11+22.24-Mid
4085	1,708,427.0511	1,687,123.9071	1367.80	11+40.03-PT
4087	1,708,468.9653	1,687,181.9371	1366.60	12+11.62-PC
4088	1,708,479.8688	1,687,205.2035	1366.30	12+37.46-Mid
4089	1,708,481.5037	1,687,230.8460	1366.80	12+63.31-PT
4091	1,708,464.9165	1,687,364.3457	1367.90	13+97.84-PC
4092	1,708,447.8767	1,687,413.5445	1367.99	14+50.29-Mid



BAUGHMAN COMPANY
 315 Ellis St.
 Wichita, KS 67211
 BaughmanCo.com

BROOKFIELD ADDITION
COORDINATES
 Sidewalk Improvements
 PROJECT NUMBER:
 DESIGN: AEG DRAWN: JAK
 DATE: July 7, 2021
 SHEET 14 OF 16

File: C:\Projects\Brookfield Addition - 16-04-P190\Engineering\Reserve J - Sidewalk\Sidewalk_21-05-EB09.dwg