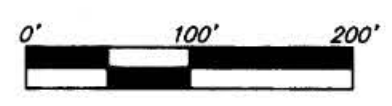


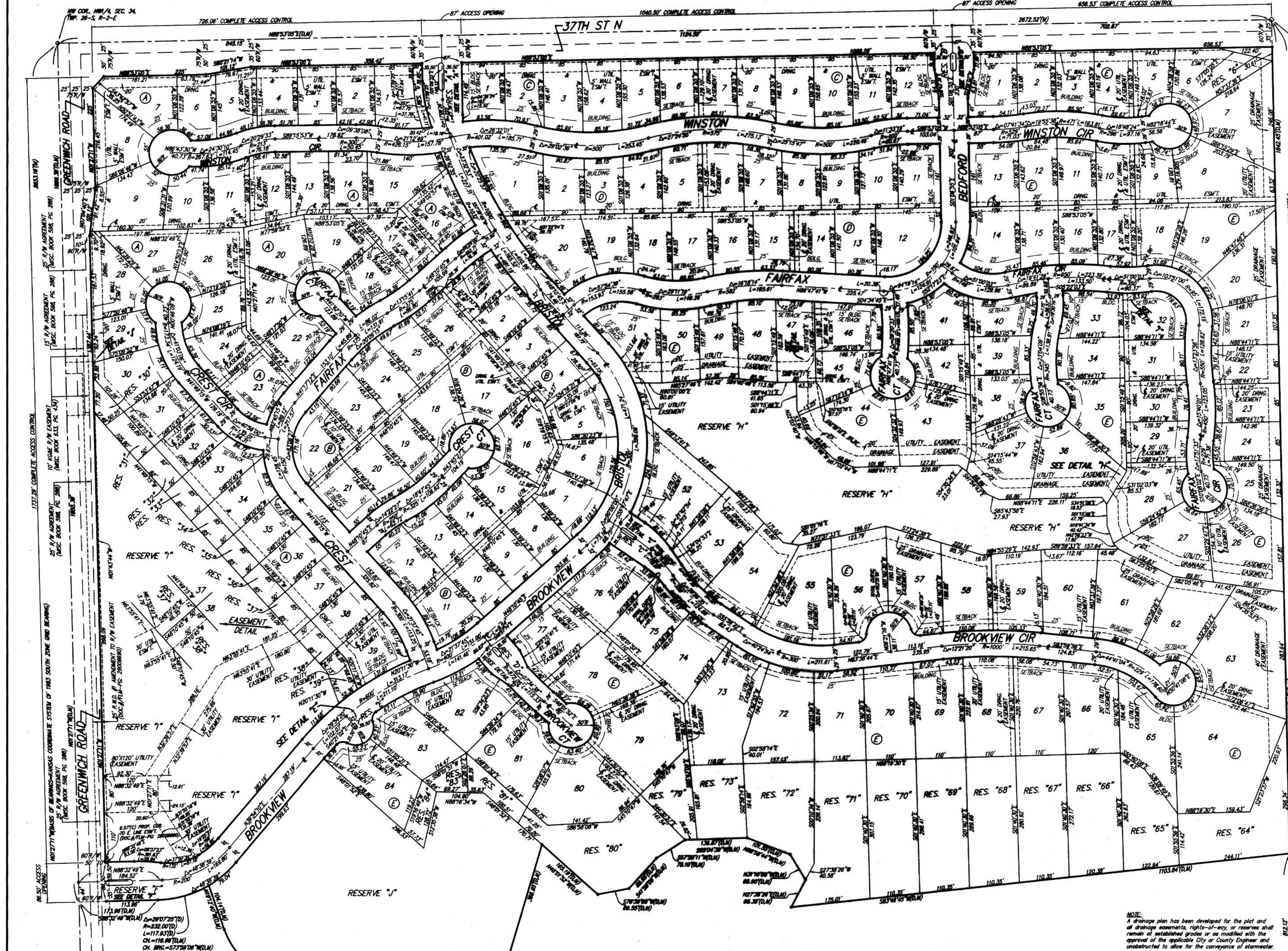
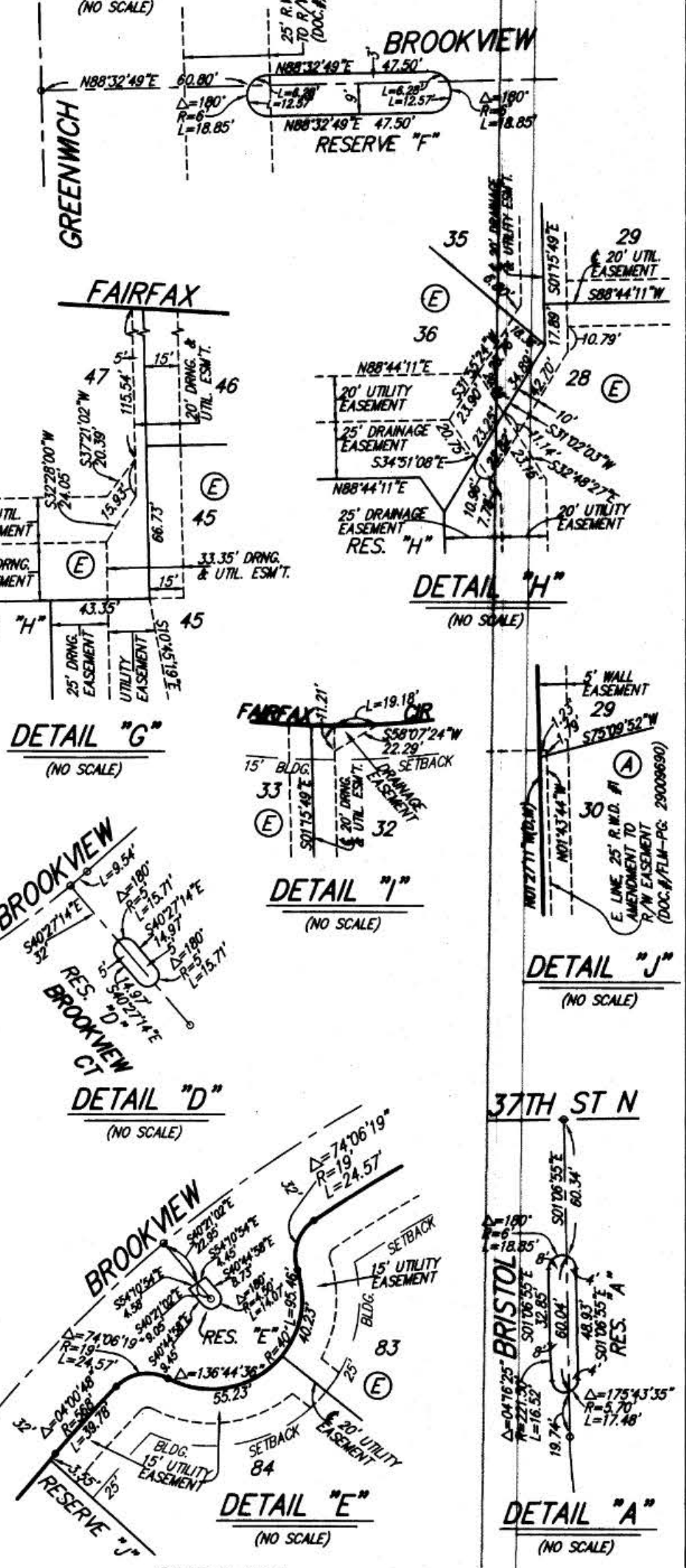
# BROOKFIELD ADDITION WICHITA, SEDGWICK COUNTY, KANSAS

- #4 REBAR W/ "BAUGHMAN" CAP (SET)
  - 1" IRON PIPE (FOUND)
  - 2" ALUMINUM "SEDGWICK COUNTY" CAP (FOUND)
  - △ STONE (FOUND)
  - #6 REBAR (FOUND)
- (M) = MEASURED  
 (D) = DESCRIBED  
 (P) = PLATTED



MINIMUM BUILDING PAD ELEVATIONS FOR LOWEST OPENING TO THE STRUCTURES

| LOT   | BLOCK | ELEVATION |
|-------|-------|-----------|
| 15-19 | A     | 1376.0    |
| 20-22 | A     | 1375.5    |
| 23-25 | A     | 1375.0    |
| 5-7   | F     | 1377.0    |
| 26-28 | F     | 1372.8    |
| 36-37 | F     | 1372.8    |
| 43-45 | F     | 1372.8    |
| 47-51 | F     | 1372.8    |
| 52-61 | F     | 1372.8    |
| 62    | F     | 1372.5    |
| 63-66 | F     | 1370.8    |
| 67-71 | F     | 1372.0    |
| 72-73 | F     | 1372.7    |
| 79-80 | F     | 1373.0    |
| 81-84 | F     | 1373.5    |



NOTE:  
A drainage plan has been developed for the plot and all drainage easements, rights-of-way, or reserves shall remain at established grades or as modified with the approval of the applicable City or County Engineer and unobstructed to allow for the conveyance of stormwater.

PAGE 2 OF 2

Baughman Company P.A.  
 315 E. St. Wichita, KS 67211  
 Phone: (316) 262-2271 Fax: (316) 262-0149

PC 262-4R