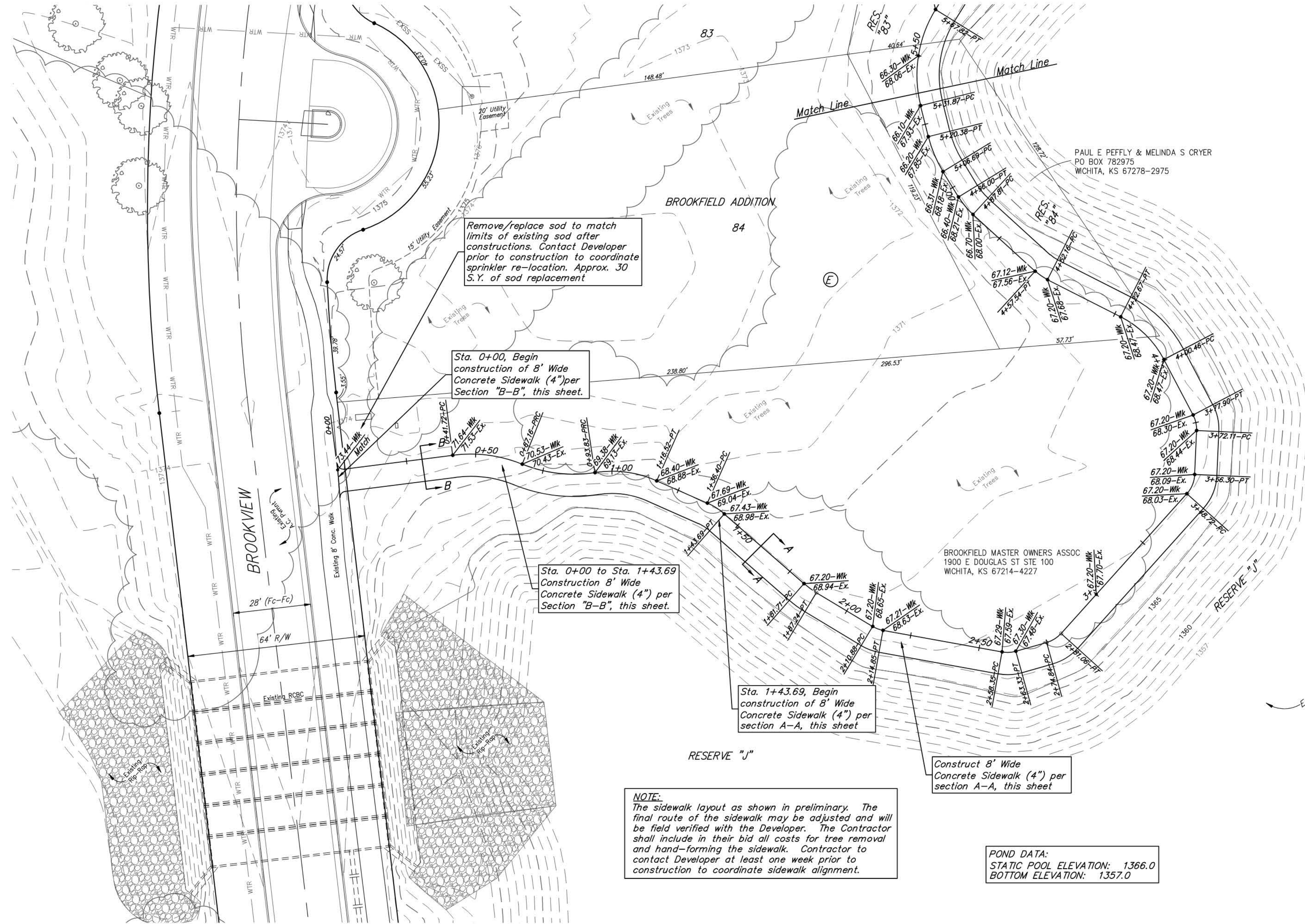
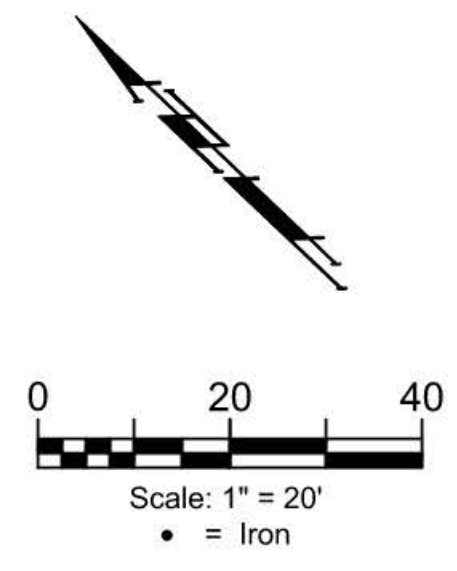
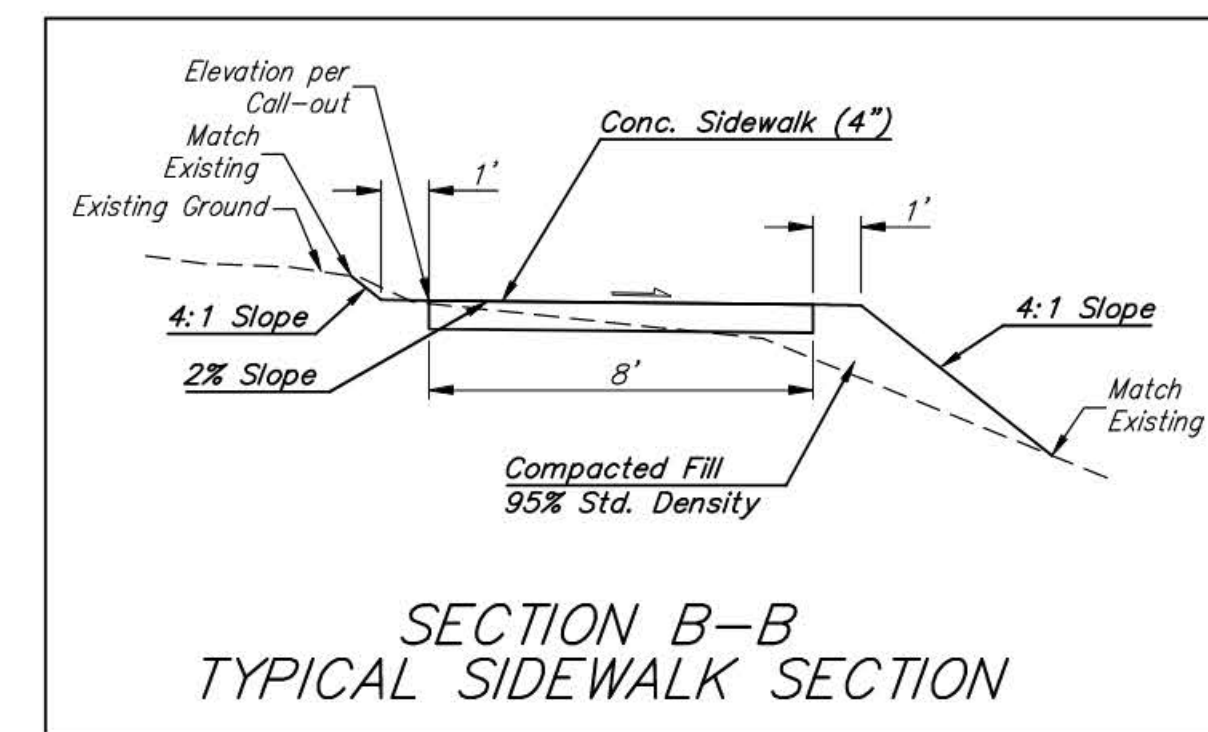
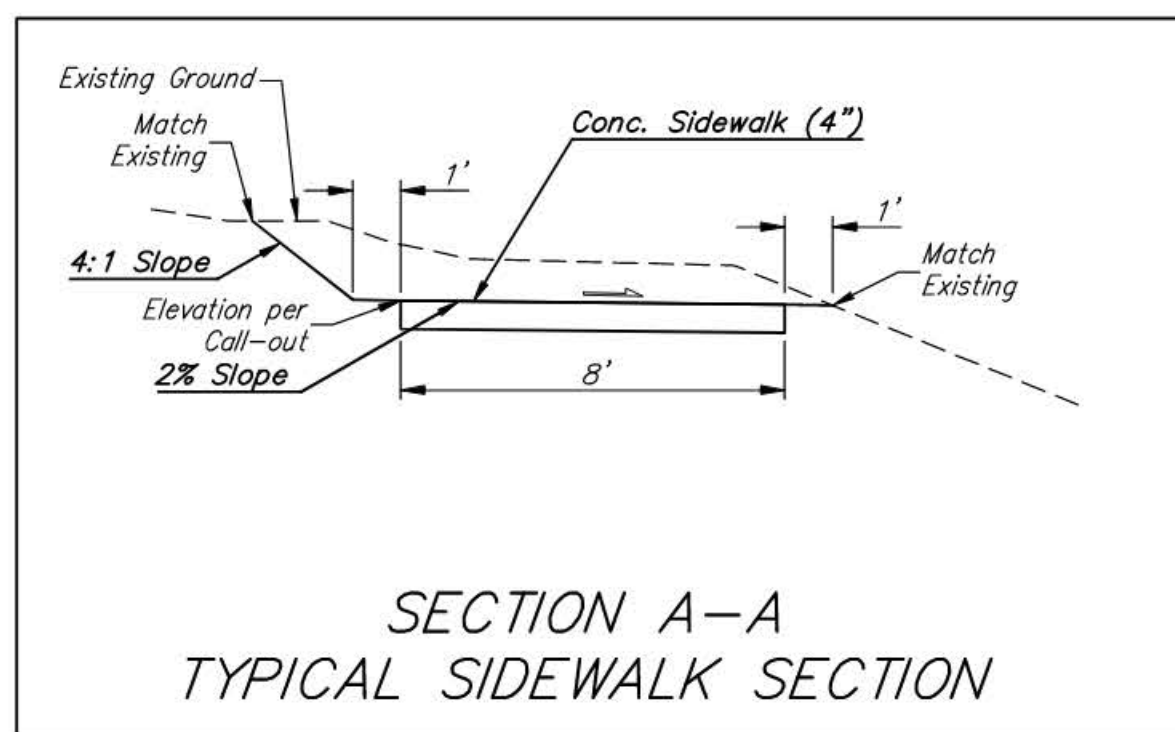


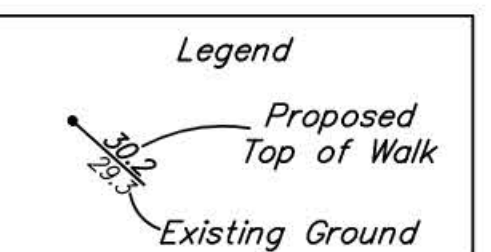
**BENCHMARKS:**  
 RR spike in asphalt, SW COR., N1/2,  
 SW1/4, Sec. 34, TWP. 26-S, R-2-E.  
 Elev. = 1400.59 NAVD88

Square cut in top of curb  
 North side of Brookview Cir.  
 Approx. 14.5' south of the SE cor.  
 of Lot 55, Block E, Brookfield Addn.  
 Elev. = 1376.51 NAVD88

City of Wichita Benchmark Disk  
 in top of curb, North side of  
 Brookview Cir. adjacent to fire hydrant  
 Approx. 17.8' SW of the SE cor. of  
 Lot 58, Block E, Brookfield Addn.  
 Elev. = 1376.51 NAVD88



BROOKFIELD MASTER OWNERS ASSOC  
 1900 E DOUGLAS ST STE 100  
 WICHITA, KS 67214-4227



**NOTE:**  
 The sidewalk layout as shown in preliminary. The final route of the sidewalk may be adjusted and will be field verified with the Developer. The Contractor shall include in their bid all costs for tree removal and hand-forming the sidewalk. Contractor to contact Developer at least one week prior to construction to coordinate sidewalk alignment.

**POND DATA:**  
 STATIC POOL ELEVATION: 1366.0  
 BOTTOM ELEVATION: 1357.0



**BAUGHMAN COMPANY**  
 315 Ellis St.  
 Wichita, KS 67211  
 316-262-7271  
 BaughmanCo.com

BROOKFIELD ADDITION  
**SIDEWALK PLAN**  
 PROJECT NUMBER:  
 DESIGN: AEG DRAWN: JAK  
 DATE: Sep. 27, 2021  
 SHEET 2 OF 16

File: C:\Projects\Brookfield Addition - 16-04-P190\Engineering\Reserve J - Sidewalk\Sidewalk\_21-05-EB09.dwg