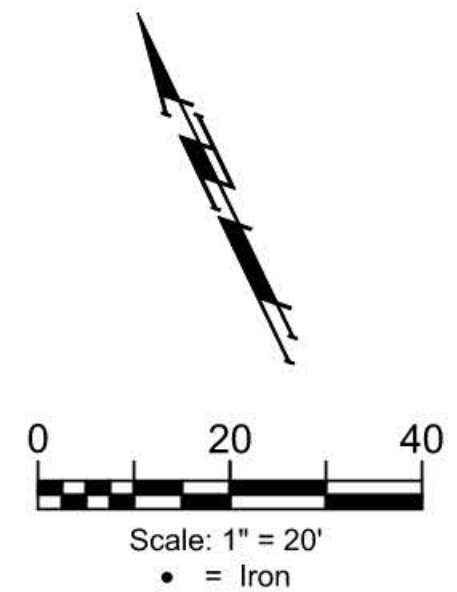


BENCHMARKS:
 RR spike in asphalt, SW COR., N1/2,
 SW1/4, Sec. 34, TWP. 26-S, R-2-E.
 Elev. = 1400.59 NAVD88

Square cut in top of curb
 North side of Brookview Cir.
 Approx. 14.5' south of the SE cor.
 of Lot 55, Block E, Brookfield Addn.
 Elev. = 1376.51 NAVD88

City of Wichita Benchmark Disk
 in top of curb. North side of
 Brookview Cir. adjacent to fire hydrant
 Approx. 17.8' SW of the SE cor. of
 Lot 58, Block E, Brookfield Addn.
 Elev. = 1376.51 NAVD88



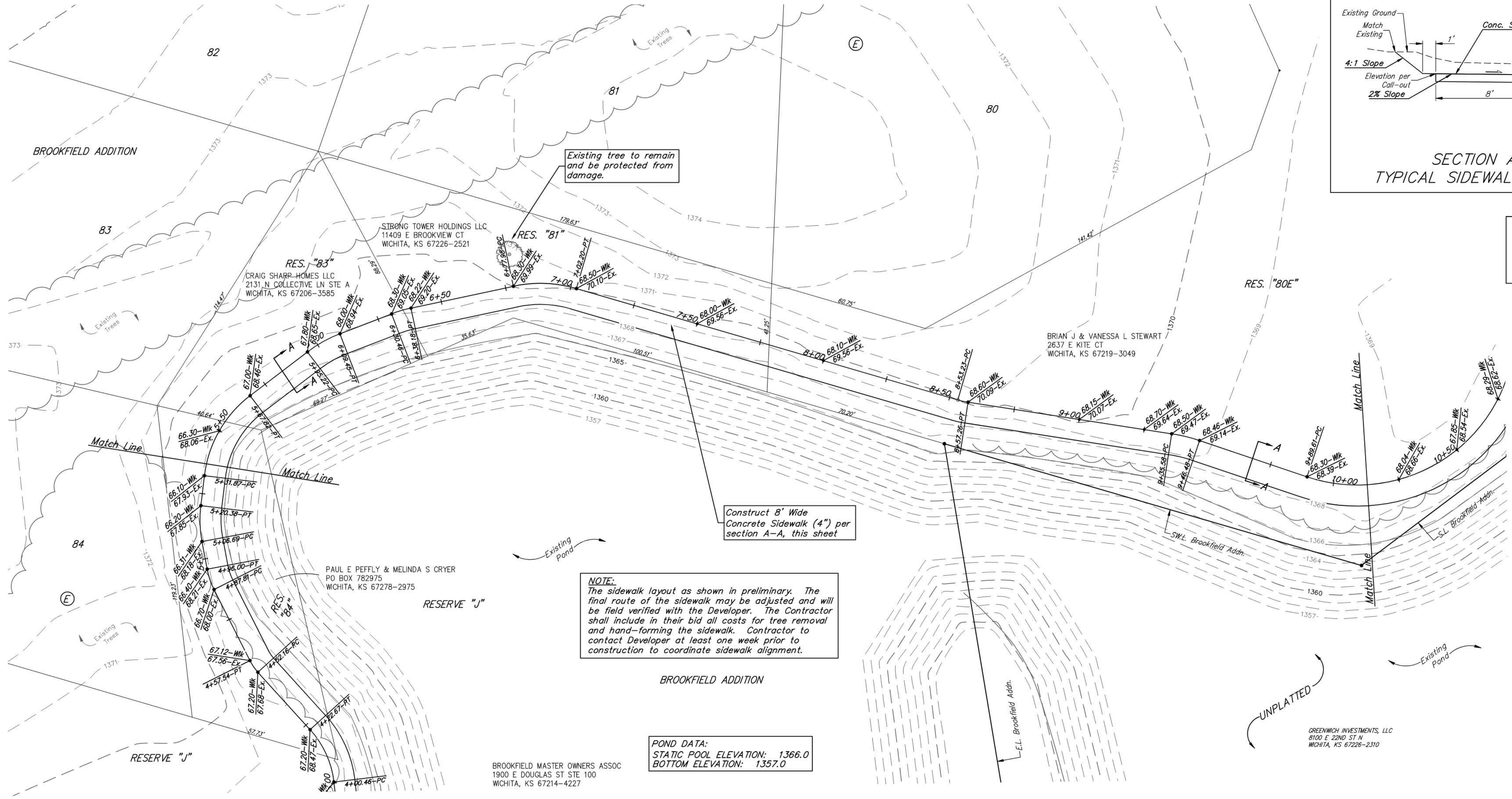
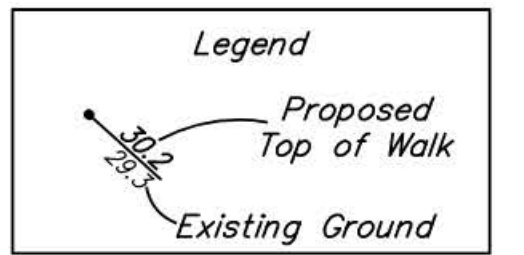
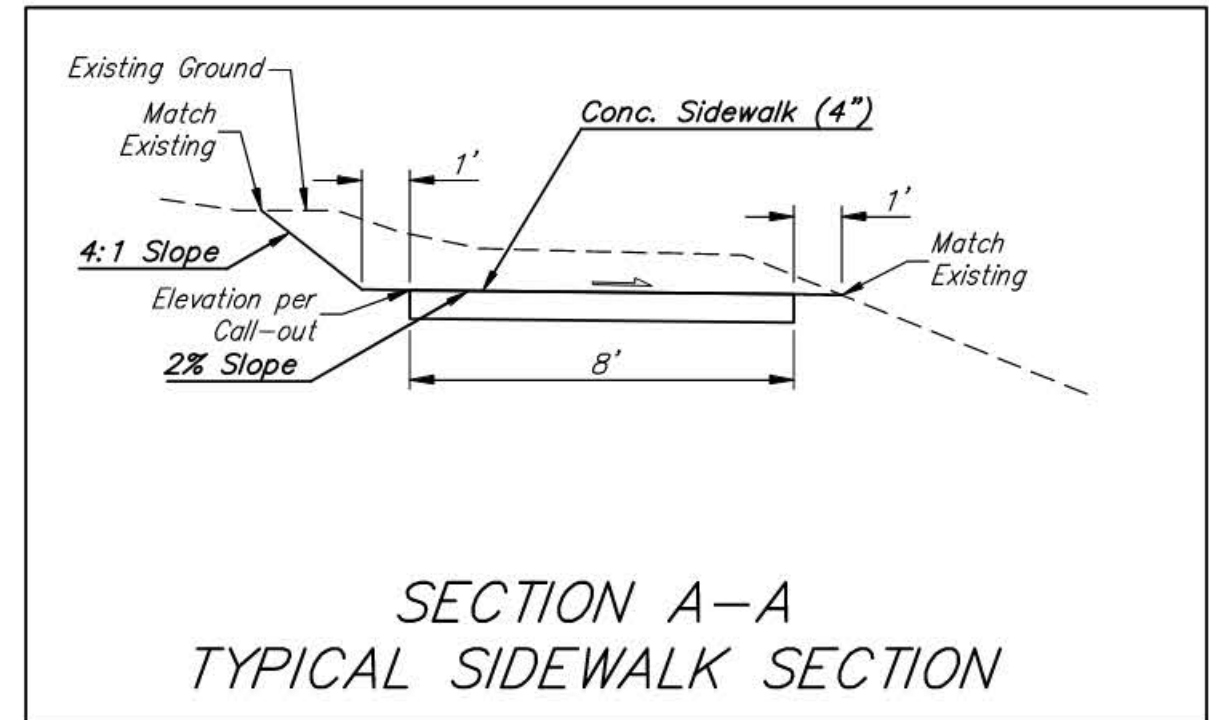
Res. "81" has been sodded prior to construction.
 Replace w/ matching sod variety. Coordinate
 sprinkler relocation with developer prior to
 construction. Approx. 200 S.Y. of sod replacement

Existing tree to remain
 and be protected from
 damage.

Construct 8' Wide
 Concrete Sidewalk (4")
 per section A-A, this sheet

NOTE:
 The sidewalk layout as shown in preliminary. The
 final route of the sidewalk may be adjusted and will
 be field verified with the Developer. The Contractor
 shall include in their bid all costs for tree removal
 and hand-forming the sidewalk. Contractor to
 contact Developer at least one week prior to
 construction to coordinate sidewalk alignment.

POND DATA:
 STATIC POOL ELEVATION: 1366.0
 BOTTOM ELEVATION: 1357.0



BAUGHMAN COMPANY
 315 Ellis St.
 Wichita, KS 67211
 316-262-7271
 BaughmanCo.com

BROOKFIELD ADDITION
SIDEWALK PLAN

PROJECT NUMBER:
 DESIGN: AEG DRAWN: JAK
 DATE: Sep. 27, 2021
 SHEET 3 OF 16

File: C:\Projects\Brookfield Addition - 16-04-P190\Engineering\Reserve J - Sidewalk\Sidewalk_21-05-EB09.dwg