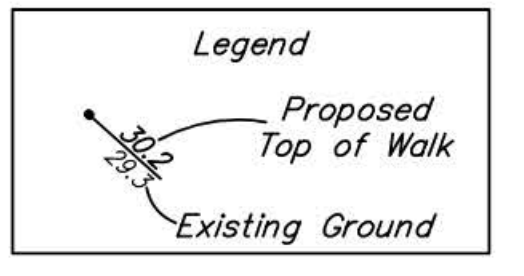
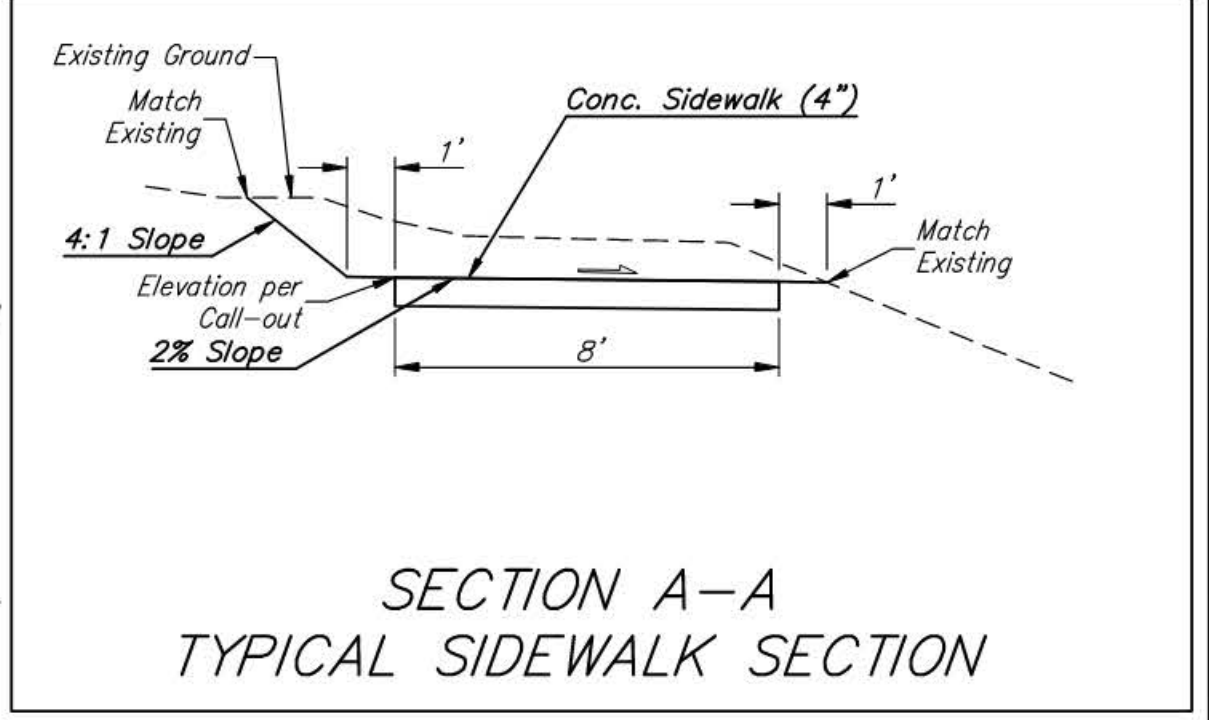
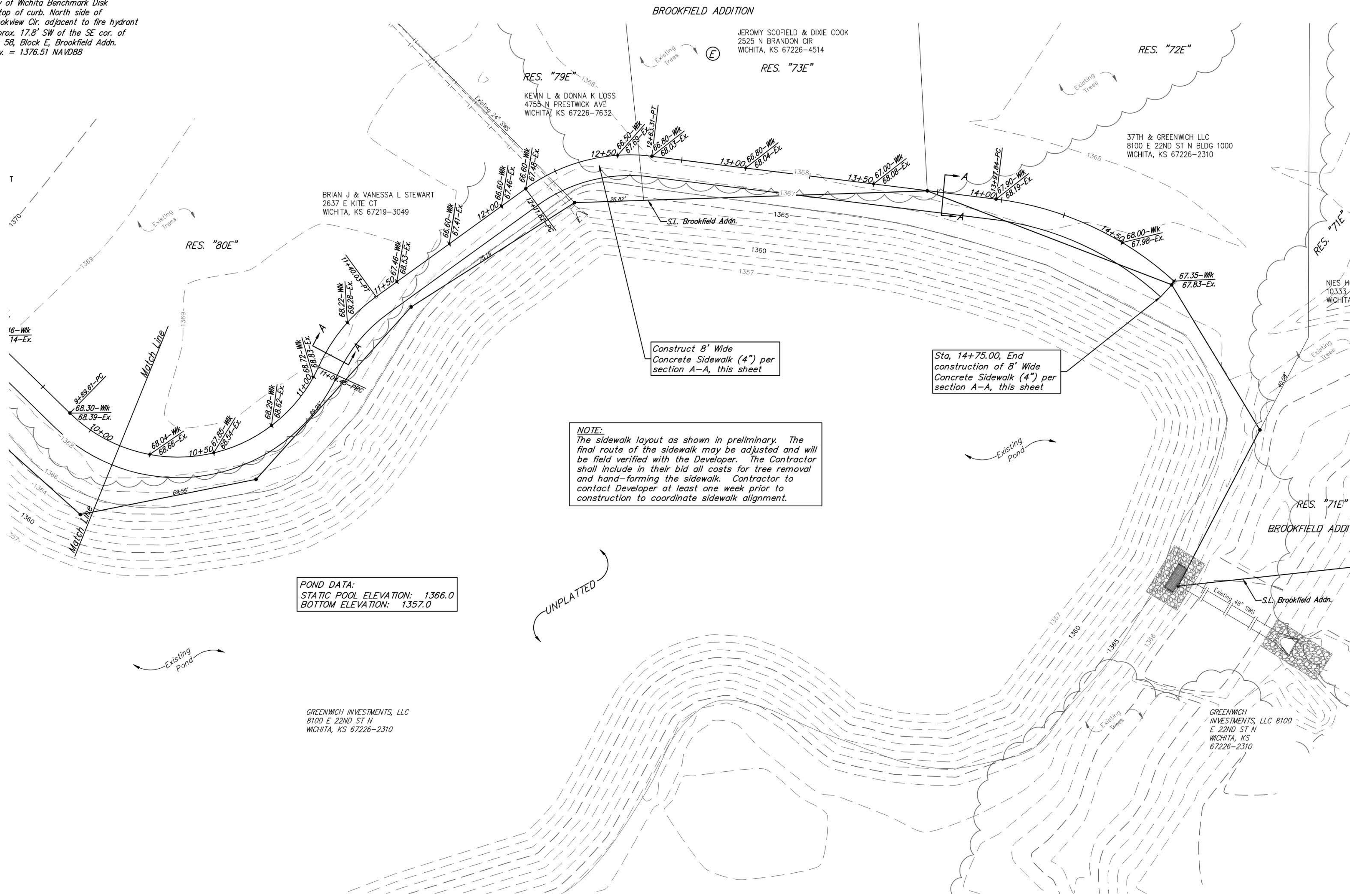
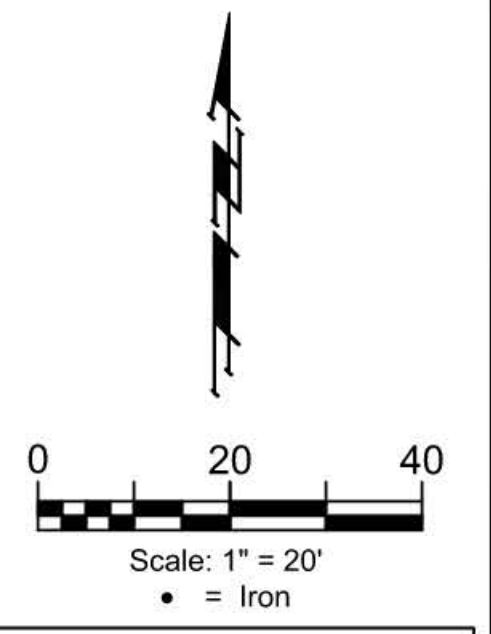


BENCHMARKS:
 RR spike in asphalt, SW COR., N1/2, SW1/4, Sec. 34, TWP. 26-S, R-2-E. Elev. = 1400.59 NAVD88
 Square cut in top of curb North side of Brookview Cir. Approx. 14.5' south of the SE cor. of Lot 55, Block E, Brookfield Addn. Elev. = 1376.51 NAVD88

City of Wichita Benchmark Disk in top of curb. North side of Brookview Cir. adjacent to fire hydrant. Approx. 17.8' SW of the SE cor. of Lot 58, Block E, Brookfield Addn. Elev. = 1376.51 NAVD88



NOTE:
 The sidewalk layout as shown in preliminary. The final route of the sidewalk may be adjusted and will be field verified with the Developer. The Contractor shall include in their bid all costs for tree removal and hand-forming the sidewalk. Contractor to contact Developer at least one week prior to construction to coordinate sidewalk alignment.

POND DATA:
 STATIC POOL ELEVATION: 1366.0
 BOTTOM ELEVATION: 1357.0

GREENWICH INVESTMENTS, LLC
 8100 E 22ND ST N
 WICHITA, KS 67226-2310



BAUGHMAN COMPANY
 315 Ellis St.
 Wichita, KS 67211
 316-262-7271
 BaughmanCo.com

BROOKFIELD ADDITION
SIDEWALK PLAN

PROJECT NUMBER:

DESIGN: AEG DRAWN: JAK
 DATE: Sep. 27, 2021

SHEET **4** OF **16**

File: C:\Projects\Brookfield Addition - 16-04-P190\Engineering\Reserve J - Sidewalk\Sidewalk_21-05-EB09.dwg