

**BENCHMARKS:**  
 RR spike in asphalt, SW COR., N1/2,  
 SW1/4, Sec. 34, TWP. 26-S, R-2-E.  
 Elev. = 1400.59 NAVD88

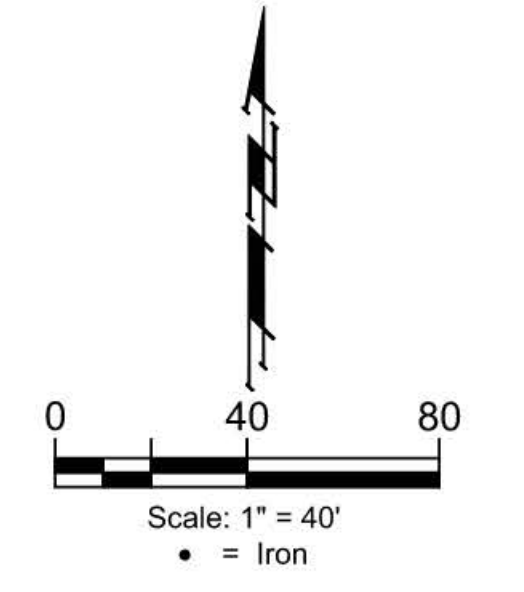
Square cut in top of curb  
 North side of Brookview Cir.  
 Approx. 14.5' south of the SE cor.  
 of Lot 55, Block E, Brookfield Addn.  
 Elev. = 1376.51 NAVD88

City of Wichita Benchmark Disk  
 in top of curb, North side of  
 Brookview Cir. adjacent to fire hydrant  
 Approx. 17.8' SW of the SE cor. of  
 Lot 58, Block E, Brookfield Addn.  
 Elev. = 1376.51 NAVD88

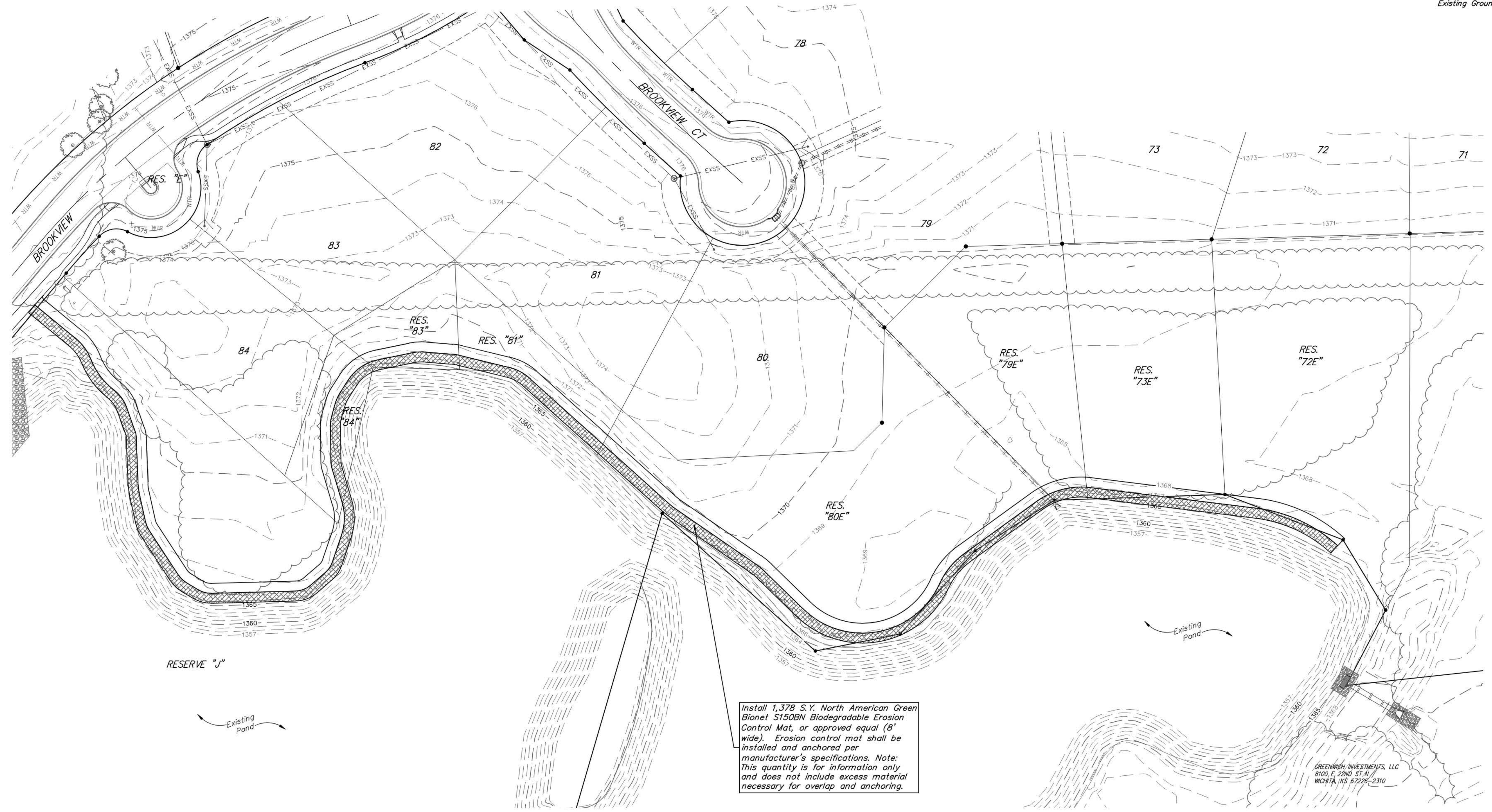
EROSION CONTROL MEASURE	INSTALL	MAINTAIN
EROSION CONTROL MAT (SY)	1,310	0

\* ALL EXISTING BMPs INCLUDING CONSTRUCTION ENTRANCE, SEDIMENT BARRIERS, SILT FENCE, CUT-OFF TRENCH, AND EROSION CONTROL MAT SHALL BE MAINTAINED AND REPAIRED IF NECESSARY.

All areas disturbed during construction shall be seeded, mulched, and fertilized as per Cover Sheet General Notes.



Existing Ground ——— 1364 ———  
 Existing Ground [hatched pattern]



Install 1,378 S.Y. North American Green Bionet S150BN Biodegradable Erosion Control Mat, or approved equal (8' wide). Erosion control mat shall be installed and anchored per manufacturer's specifications. Note: This quantity is for information only and does not include excess material necessary for overlap and anchoring.

**BAUGHMAN COMPANY**

315 Ellis St.  
 Wichita, KS 67211  
 316-262-7271  
 BaughmanCo.com

BROOKFIELD ADDITION

**EROSION CONTROL PLAN**

SIDEWALK IMPROVEMENTS

PROJECT NUMBER:

DESIGN: AEG DRAWN: JAK

DATE: July 7, 2021

SHEET **5** OF **16**

File: C:\Projects\Brookfield Addition - 16-04-P190\Engineering\Reserve J - Sidewalk\Sidewalk\_21-05-EB09.dwg