

**BENCHMARKS:**

BM #1: "□" Center of storm water sewer cauld, west side of Meridian, 22.4' S. & 30.5' E. of the SE Cor., Lot 1, Block D, Northgate 4th Addition.  
Elev. = 1334.49 (NAVD88)

BM #2: BM Disk, top of curb, 14.8' W. & 0.7' N. of the SW Cor., Lot 10, Block D, Northgate 4th Addition.  
Elev. = 1337.35 (NAVD 88)

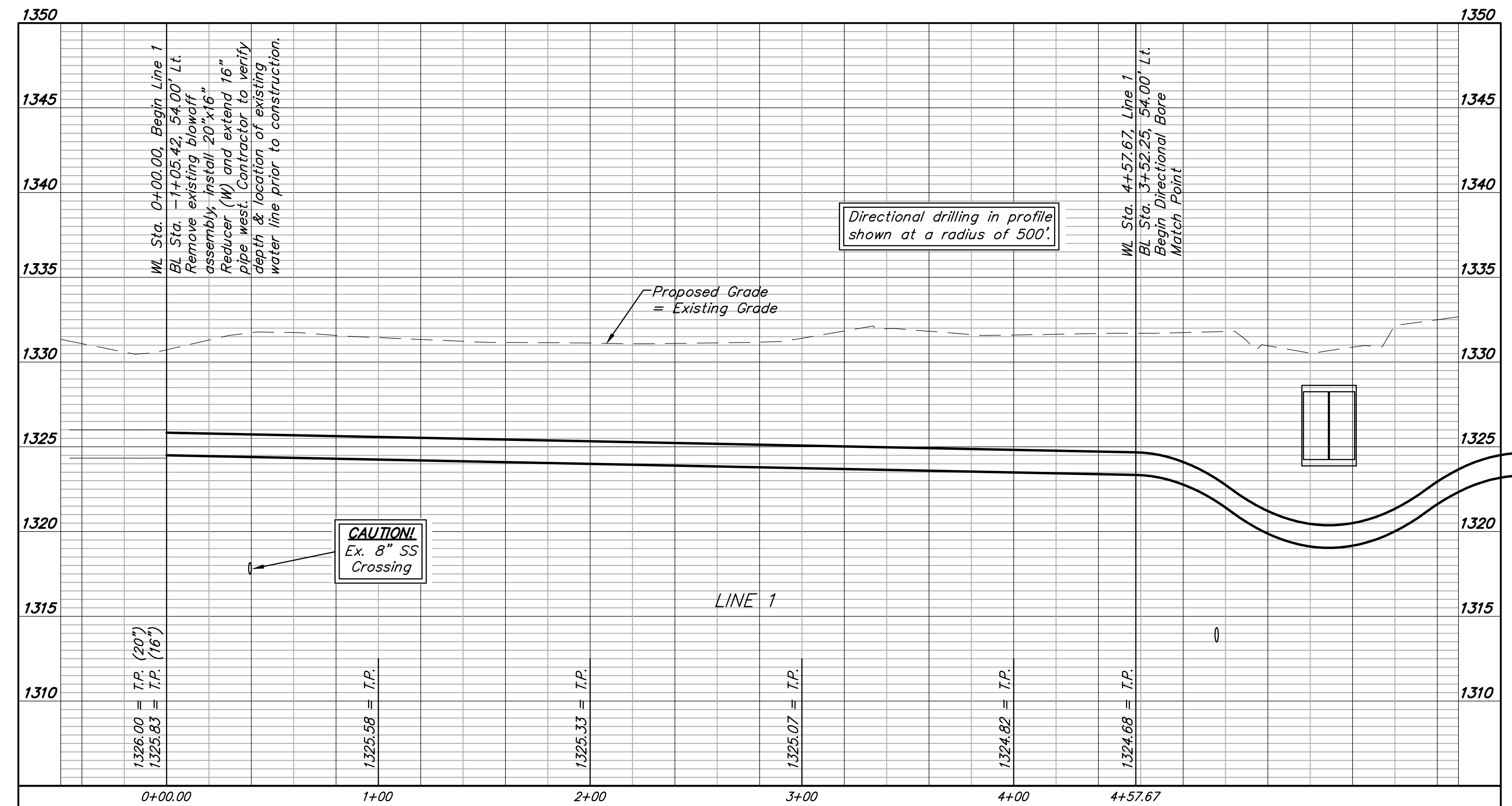
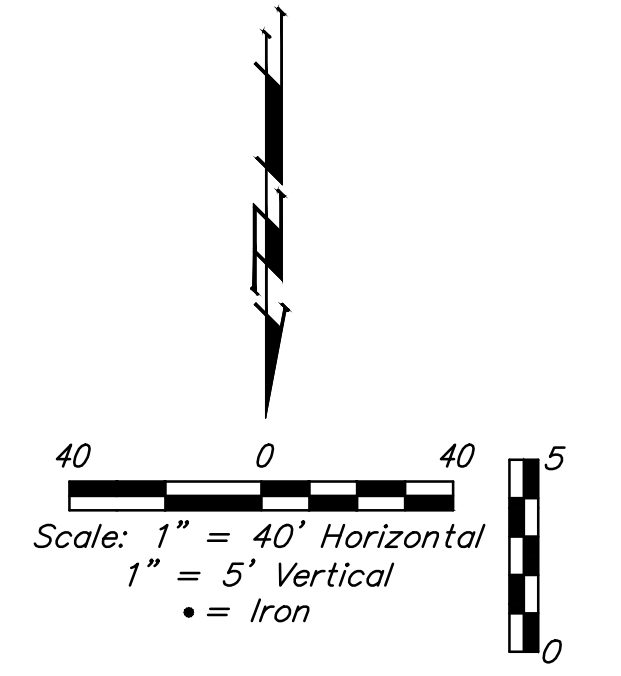
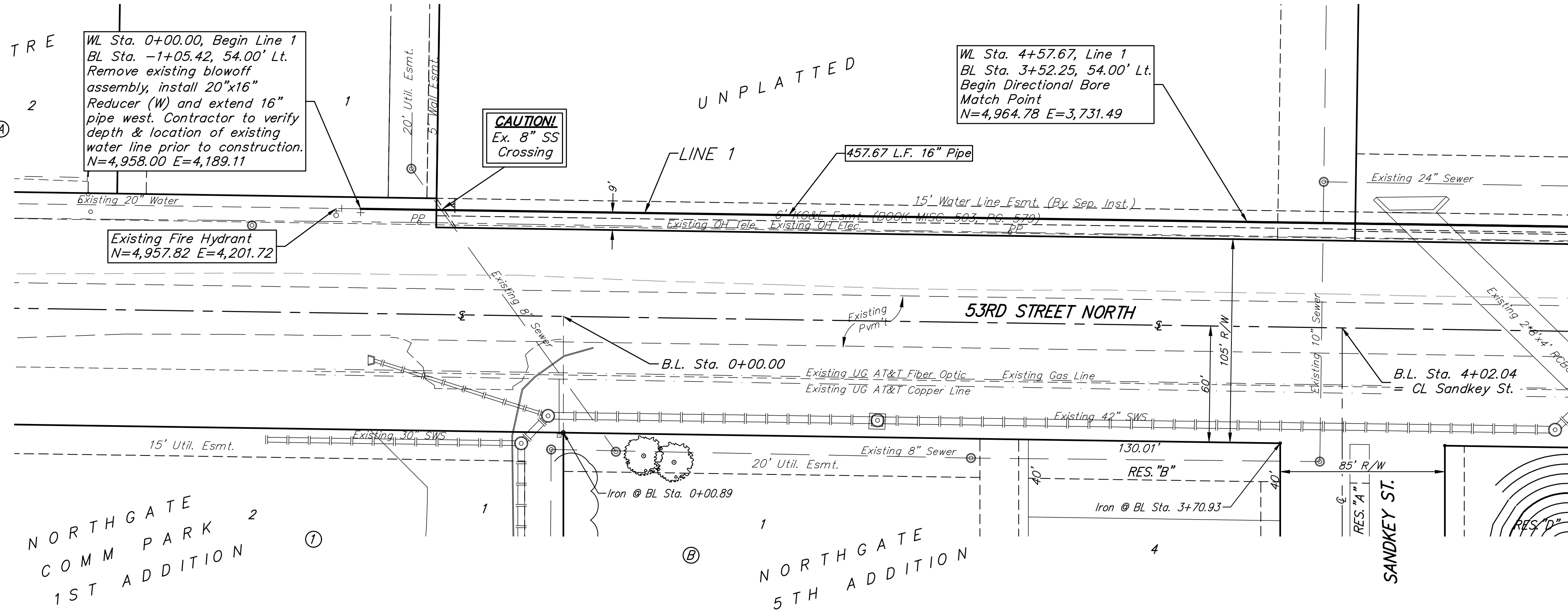
Contact utility companies 3 weeks prior to construction to coordinate construction.  
Heide Bryan, Evergy, 261-6354  
Forrest Hair, Cox Comm, 761-3622

JOHNSON  
COMM CENTRE  
ADDITION

NORTHGATE  
COMM PARK  
1ST ADDITION

Baseline = CL 53rd St. N.

Contractor to maintain a minimum of 2' of vertical separation (O.D.-O.D.) between sanitary sewer and water line.



**DEPTH UNKNOWN**  
Contractor to Verify Depth & Location of Existing Water Line Prior to Construction.

Directional drilling in profile shown at a radius of 500'.



**BAUGHMAN COMPANY**  
315 Ellis St.  
Wichita, KS 67211  
316-262-7271  
BaughmanCo.com

NORTHGATE 5TH ADD.

**LINE 1**

WATER MAIN IMPROVEMENTS

PROJECT NUMBER:  
21-03-E872

DESIGN: AEG DRAWN: TMS

DATE: October 15, 2021

SHEET **2** OF **12**

File: E:\Projects\Northgate 5th Addition\_20-03-P538\Engineering\Phase 1\WTR MAIN 21-03-E872\Wtr Main R10.11.21.dwg