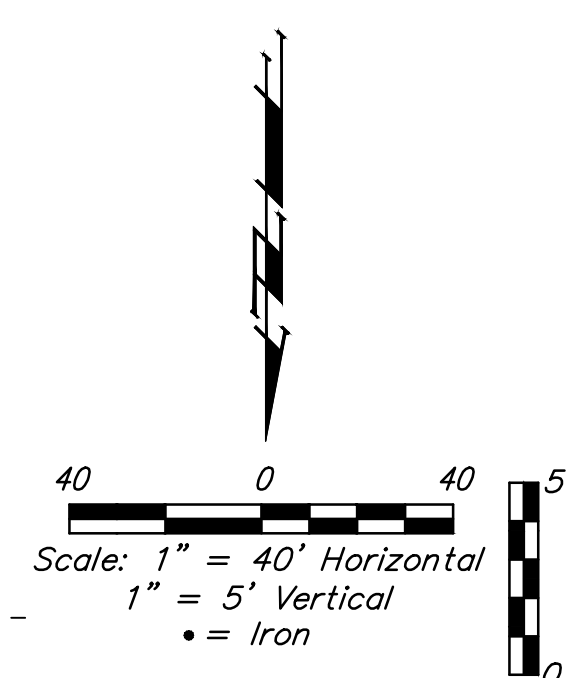
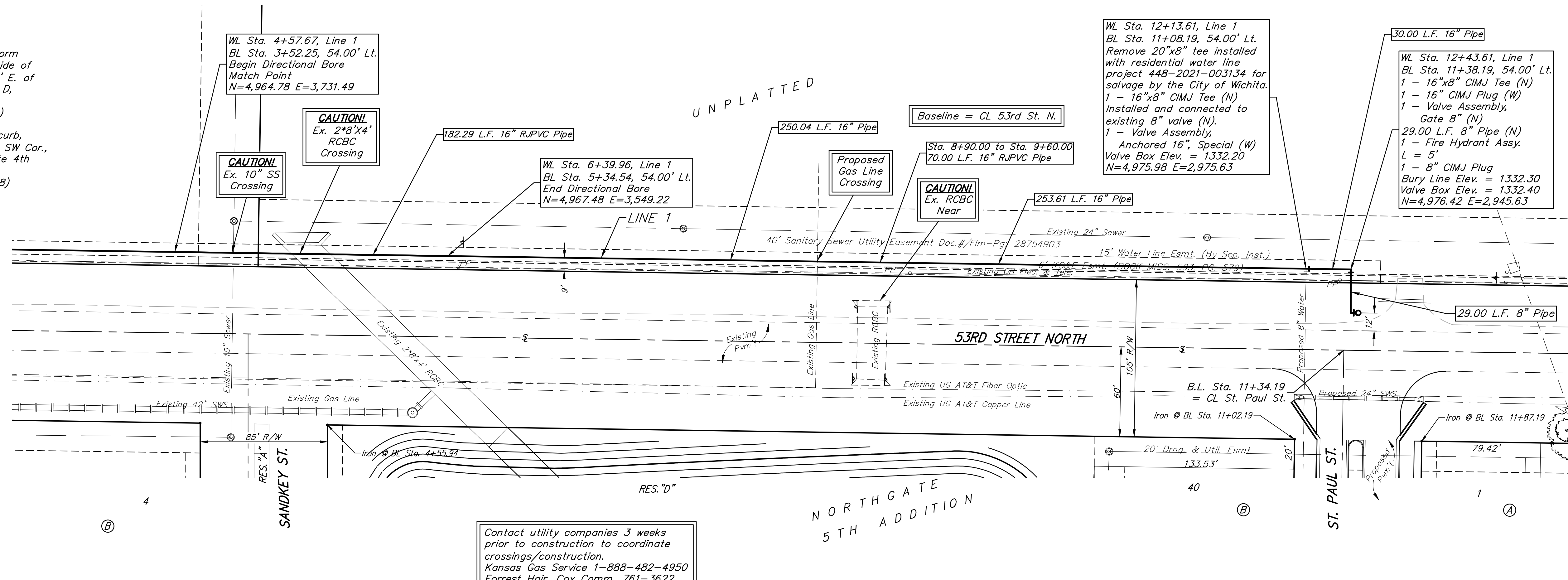
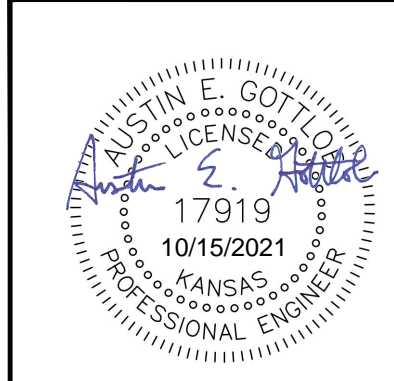
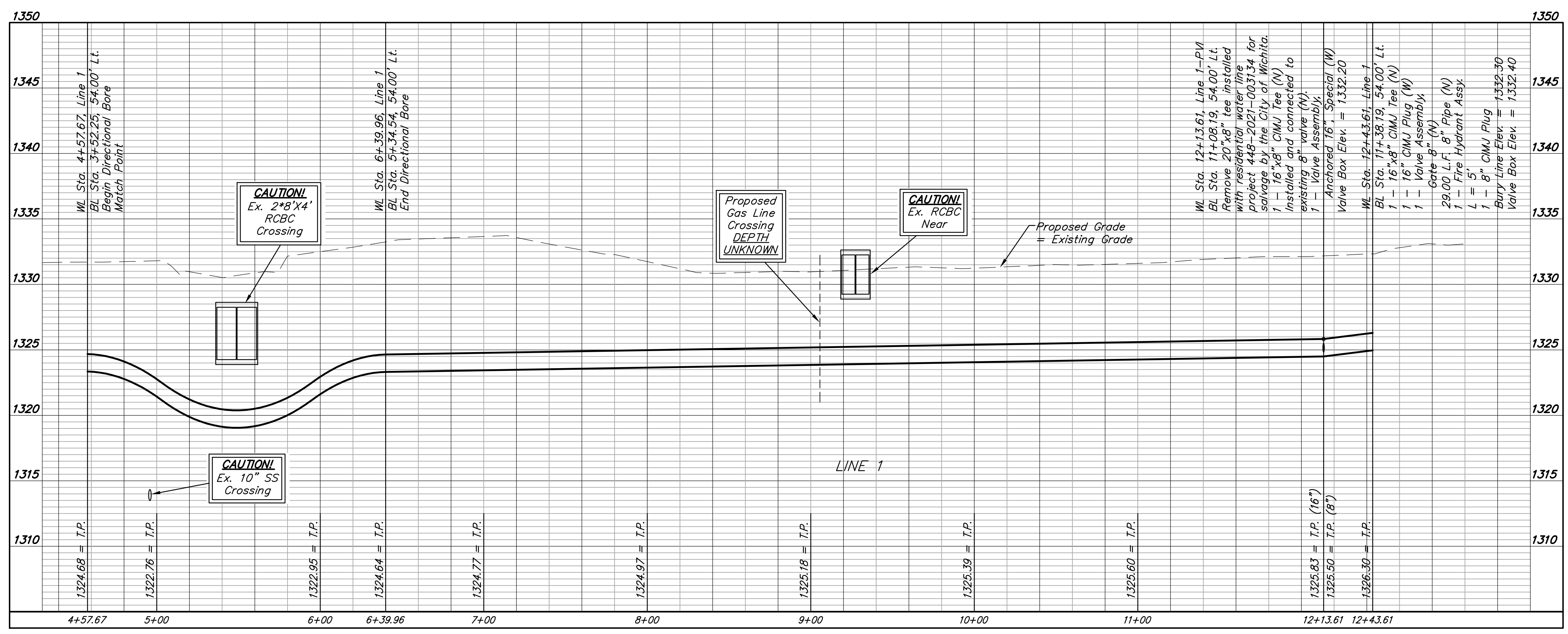


BENCHMARKS:
 BM #1: "□" Center of storm water sewer caulk, west side of Meridian, 22.4' S. & 30.5' E. of the SE Cor., Lot 1, Block D, Northgate 4th Addition.
 Elev. = 1334.49 (NAVD88)

BM #2: BM Disk, top of curb, 14.8' W. & 0.7' N. of the SW Cor., Lot 10, Block D, Northgate 4th Addition.
 Elev. = 1337.35 (NAVD 88)



Contact utility companies 3 weeks prior to construction to coordinate crossings/construction.
 Kansas Gas Service 1-888-482-4950
 Forrest Hair, Cox Comm, 761-3622



BAUGHMAN COMPANY
 315 Ellis St.
 Wichita, KS 67211
 316-262-7271
 BaughmanCo.com

NORTHGATE 5TH ADD.
LINE 1
 WATER MAIN IMPROVEMENTS
 PROJECT NUMBER: 21-03-E872
 DESIGN: AEG DRAWN: TMS
 DATE: October 15, 2021
 SHEET 3 OF 12

File: E:\Projects\Northgate 5th Addition_20-03-P538\Engineering\Phase 1\WTR MAIN 21-03-E872\Wtr Main R10.11.21.dwg