

BENCHMARKS:
 BM #1: "□" Cut in face of curb inlet near SE corner of Lot 30, Block C, Gray's 5th Add. Elev. = 1297.86 NAVD88
 BM #2: "□" Cut in top of curb on east side of Flora, ±10' north of south property line of Gray's 5th Add. Elev. = 1302.40 NAVD88
 BM #4: "+" Cut in top of curb on east side of Flora, adjacent to common lot line of Lots 70&71, Block F, Trinity Point Add. Elev. = 1298.36 NAVD88

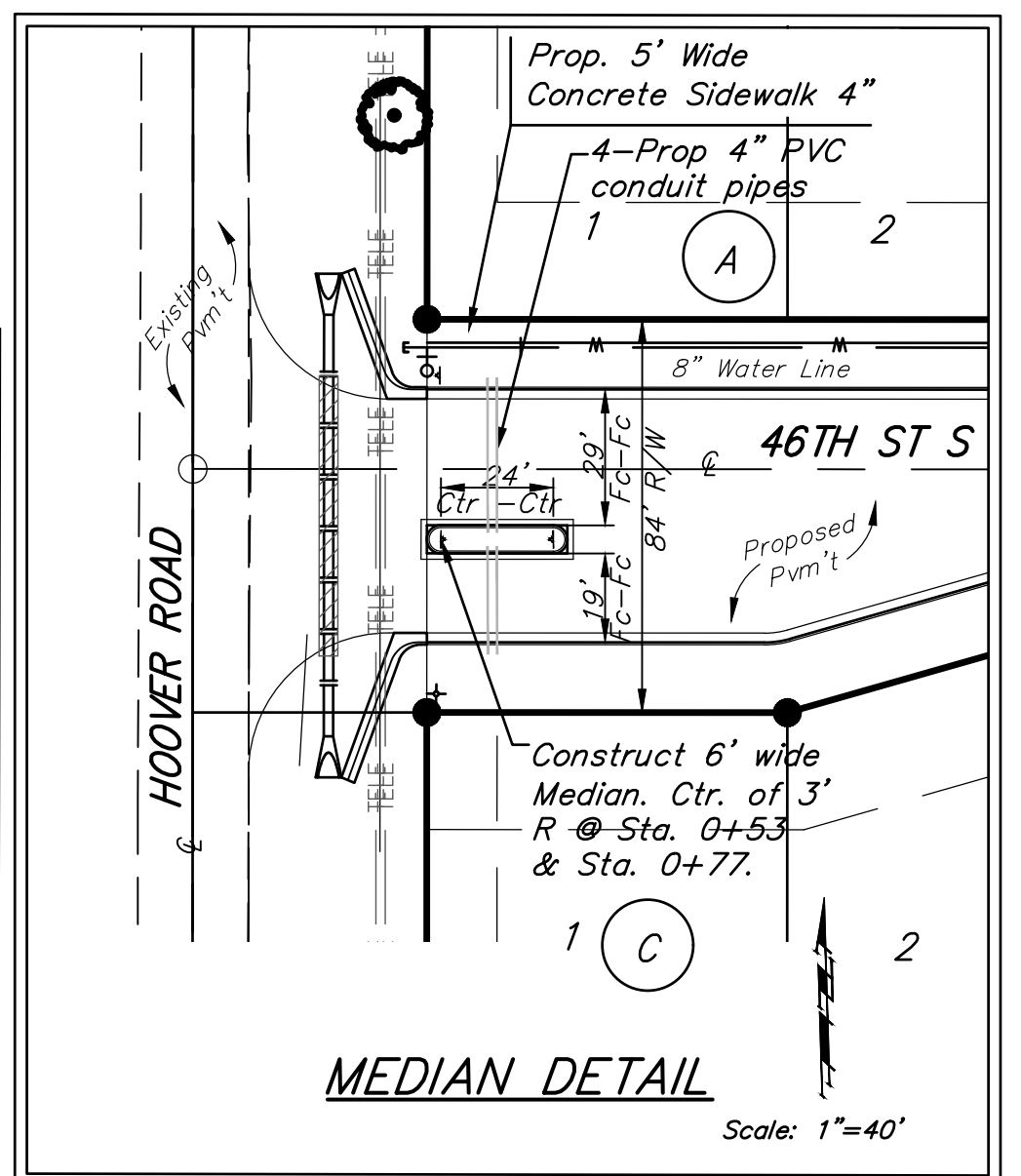
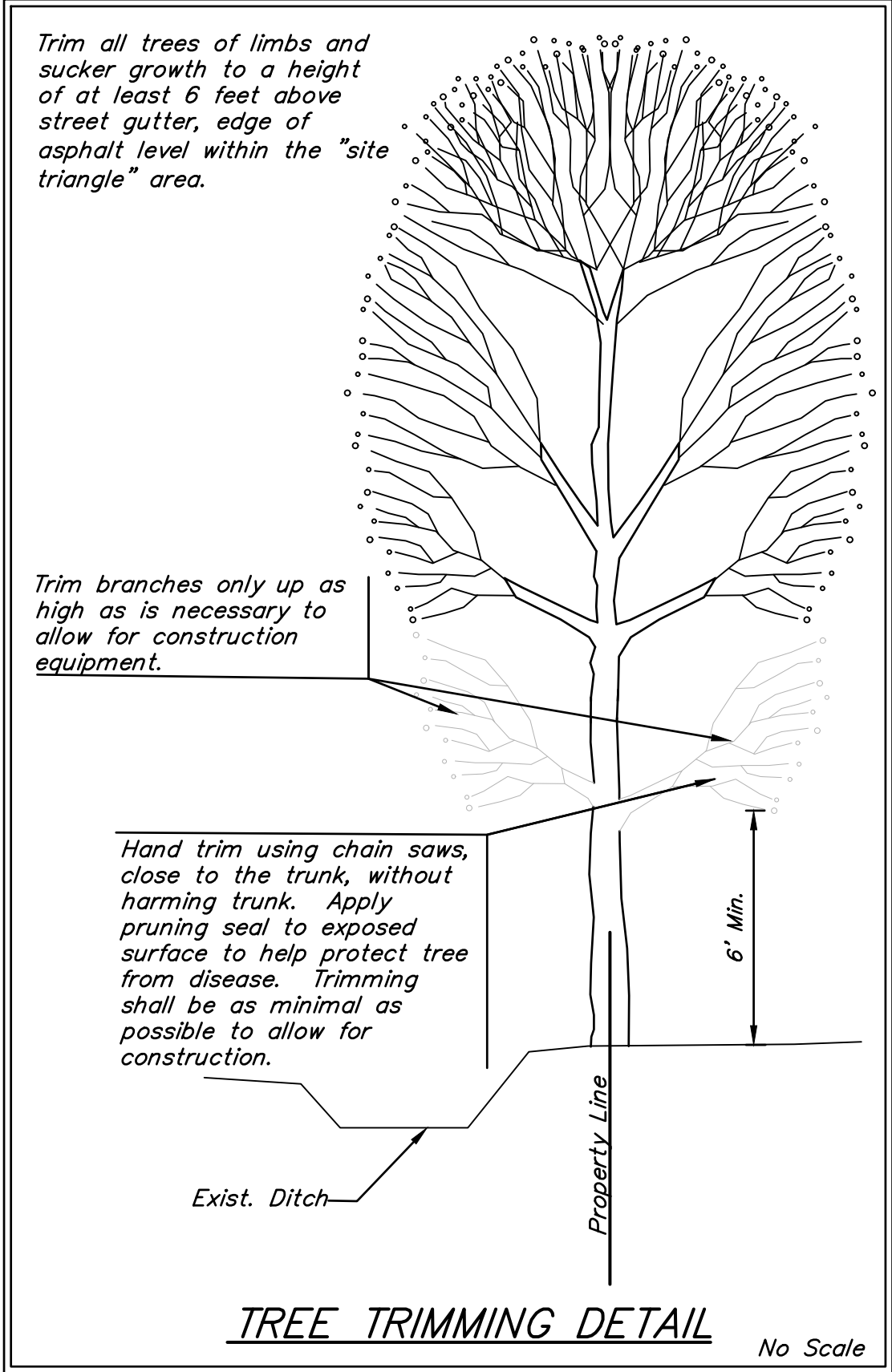
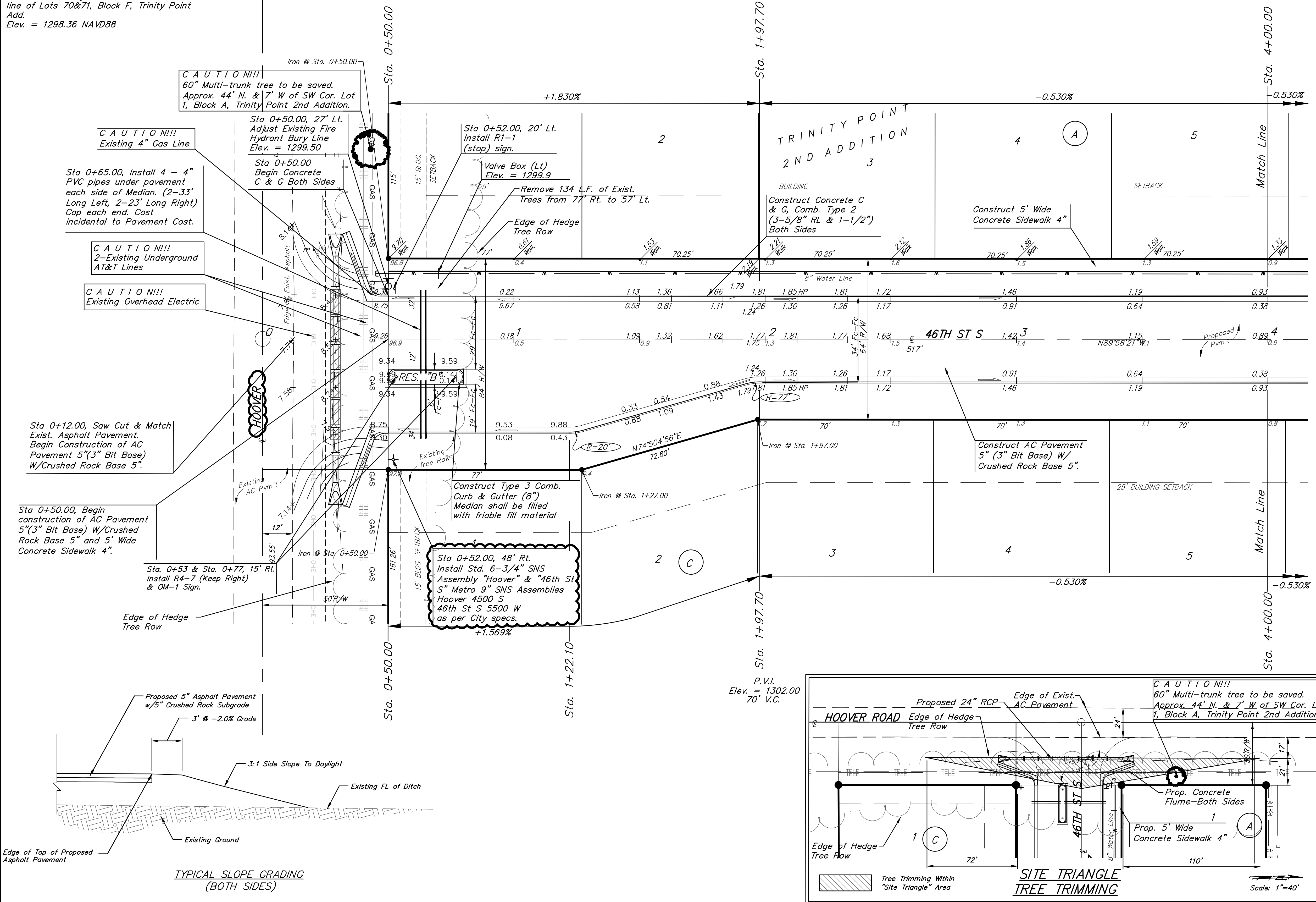
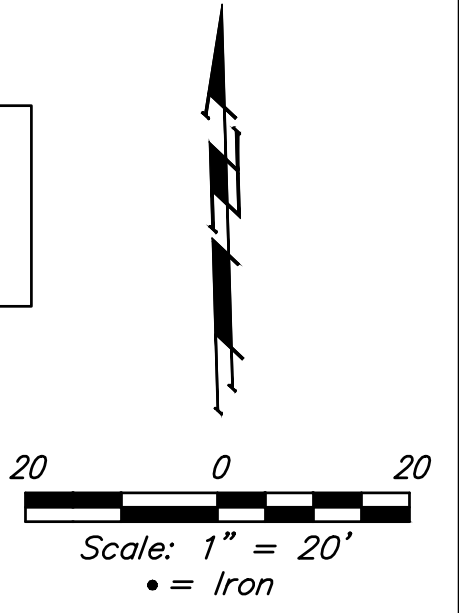
Baseline = ϕ 46th St S

WATER VALVE LOCATION TABLE

VALVE NUMBER	STREET	BASELINE STATION	OFFSET DISTANCE	OFFSET DIRECTION
V1	46th St S	0+70.35	26'	Lt.

Paving contractor will be responsible to operate all water valves on the project, in the presence of the inspector, to ensure accessibility to the valves, and that all valves (except blowoffs) are left in the "ON" position when the project is completed.

NOTE: ROLL TYPE CURB & GUTTER TO BE CONSTRUCTED ON THE PAVEMENT SHOWN ON THIS SHEET. TOP OF CURB ELEVATIONS ARE GIVEN FOR FULL HEIGHT CURB (0.25' DIFFERENCE).



Baughman Company, P.A.
 115 E. WILSON AVE., SUITE 100, PHILADELPHIA, PA 19102
 ENGINEERING, PLANNING, DESIGN, ARCHITECTURE
 115 E. WILSON AVE., SUITE 100, PHILADELPHIA, PA 19102
 DATE: 07/20

TRINITY POINT 2ND ADDITION
 46TH ST S
 STREET & SNS IMPROVEMENTS