

BENCHMARKS:
 BM #1: "□" Cut in face of curb inlet near SE corner of Lot 30, Block C, Gray's 5th Add.
 Elev. = 1297.86 NAVD88

BM #2: "□" Cut in top of curb on east side of Flora, ±10' north of south property line of Gray's 5th Add.
 Elev. = 1302.40 NAVD88

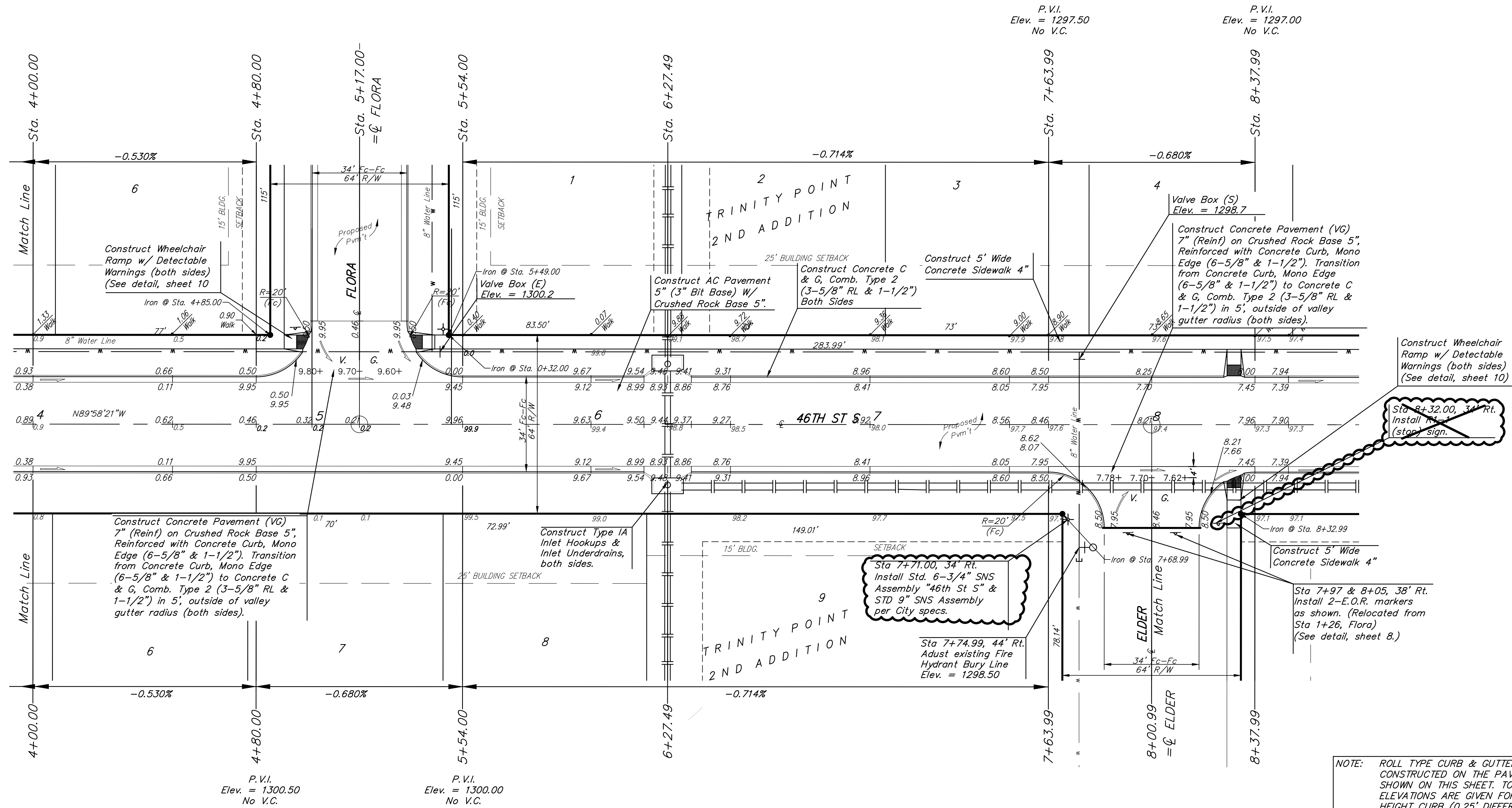
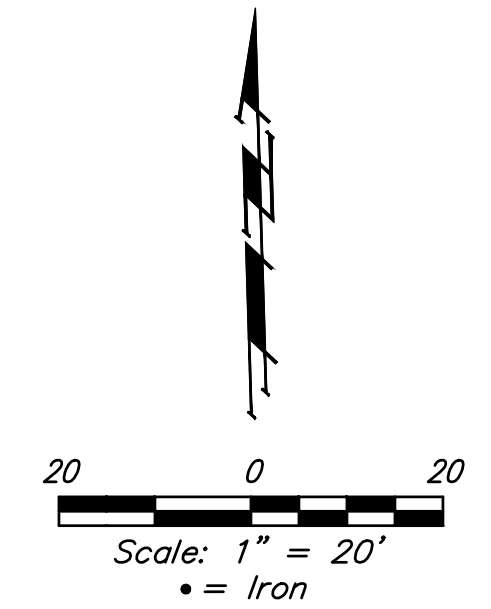
BM #4: "+" Cut in top of curb on east side of Flora, adjacent to common lot line of Lots 70&71, Block F, Trinity Point Add.
 Elev. = 1298.36 NAVD88

Baseline = ϕ 46th St S

WATER VALVE LOCATION TABLE

VALVE NUMBER	STREET	BASELINE STATION	OFFSET DISTANCE	OFFSET DIRECTION
V2	46th St S	5+46.00	26'	Lt.
V3	46th St S	7+75.00	24'	Lt.

Paving contractor will be responsible to operate all water valves on the project, in the presence of the inspector, to ensure accessibility to the valves, and that all valves (except blowoffs) are left in the "ON" position when the project is completed.



Baughman Company, P.A.
 ENGINEERING, PLANNING & ARCHITECTURE
 1100 N. 10th St., Suite 200
 Phoenix, AZ 85004
 P: 602.254.1100
 F: 602.254.1101
 www.baughmancompany.com

TRINITY POINT 2ND ADDITION
46TH ST S
 STREET & SWS IMPROVEMENTS