

LEGEND

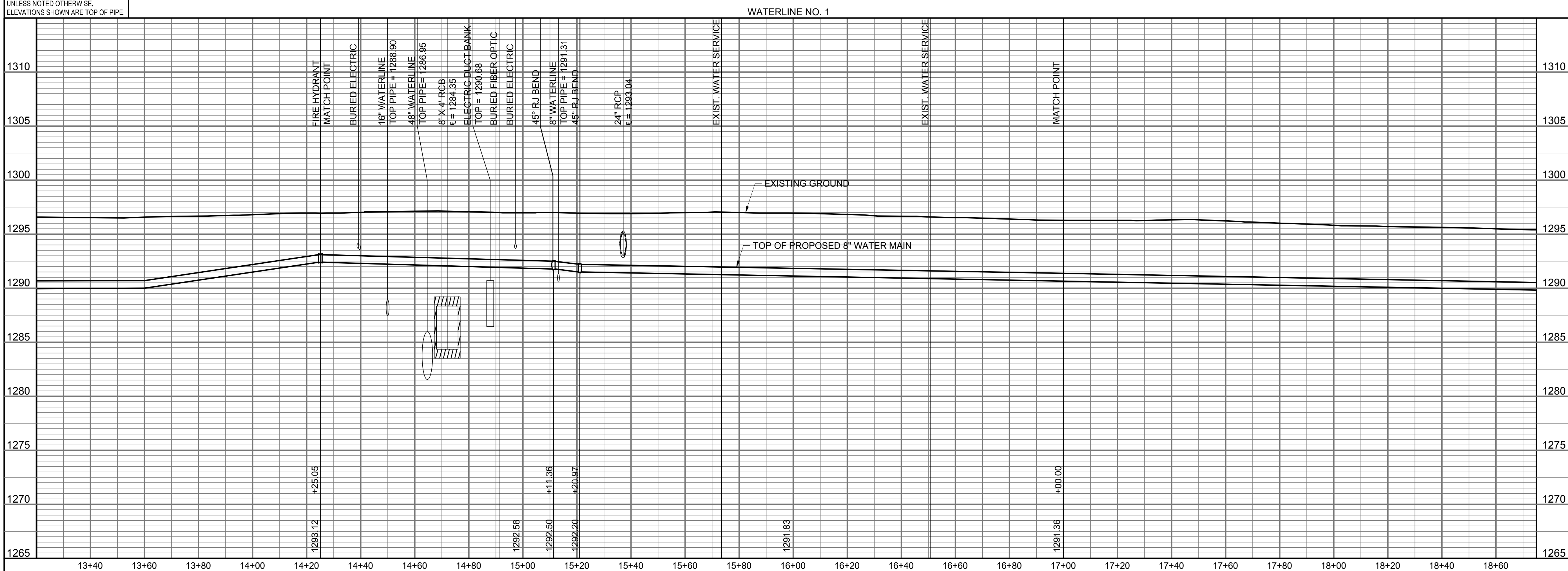
- ✕ = DENOTES WATERLINE TO BE ABANDONED IN PLACE.
- ⌈ = DENOTES CAP/PLUG BY THE CONTRACTOR. (INCLUDES REMOVAL AND REPLACEMENT OF PAVEMENT)
- ⊗ = CLOSE VALVE, REMOVE VALVE BOX (SALVAGE TO CITY) (INCLUDES REMOVAL AND REPLACEMENT OF PAVEMENT)
- ⊖ = SEE SHEET NO. C003 FOR WATERLINE COORDINATES (TYP.)
- = PROPOSED INLET PROTECTION

PLAN: LAT. & LONG.

PROFILE: HORIZ. SAME AS ABOVE

VERT:

PEC
PROFESSIONAL ENGINEERING CONSULTANTS
303 SOUTH TOPEKA
WICHITA, KS 67202
316-262-2691 www.pec1.com



CITY OF WICHITA

TREVOR KAUFMAN
LICENSED
26008
10/01/2021
KANSAS
PROFESSIONAL ENGINEER

WATERLINE IMPROVEMENTS
TO SERVE
TOPEKA STREET
FROM LEWIS TO ENGLISH

GARY JANZEN, P.E. - CITY ENGINEER
CITY OF WICHITA PROJECT NO. 448-2020-

| | |
|-----------------|--------------------|
| Issue: | |
| JOB NO. | 35-207042-002-0042 |
| DATE | SEPTEMBER 2021 |
| PM | RWG |
| DESIGNED BY | TBK |
| DRAWN BY | KTD |
| CHECKED BY | RWG |
| WATERLINE NO. 1 | |
| C102 | |

SAVED 8/31/2021 1:54:05 PM BY KURTIS DEKAT
 PLOTTED 9/20/2021 10:23:55 AM BY KURTIS DEKAT
 U:\WICHITA-CIVIL\2020\207042\002\MUNIDRAWINGS\207042-002-C-102-WATERLINE NO. 1.DWG