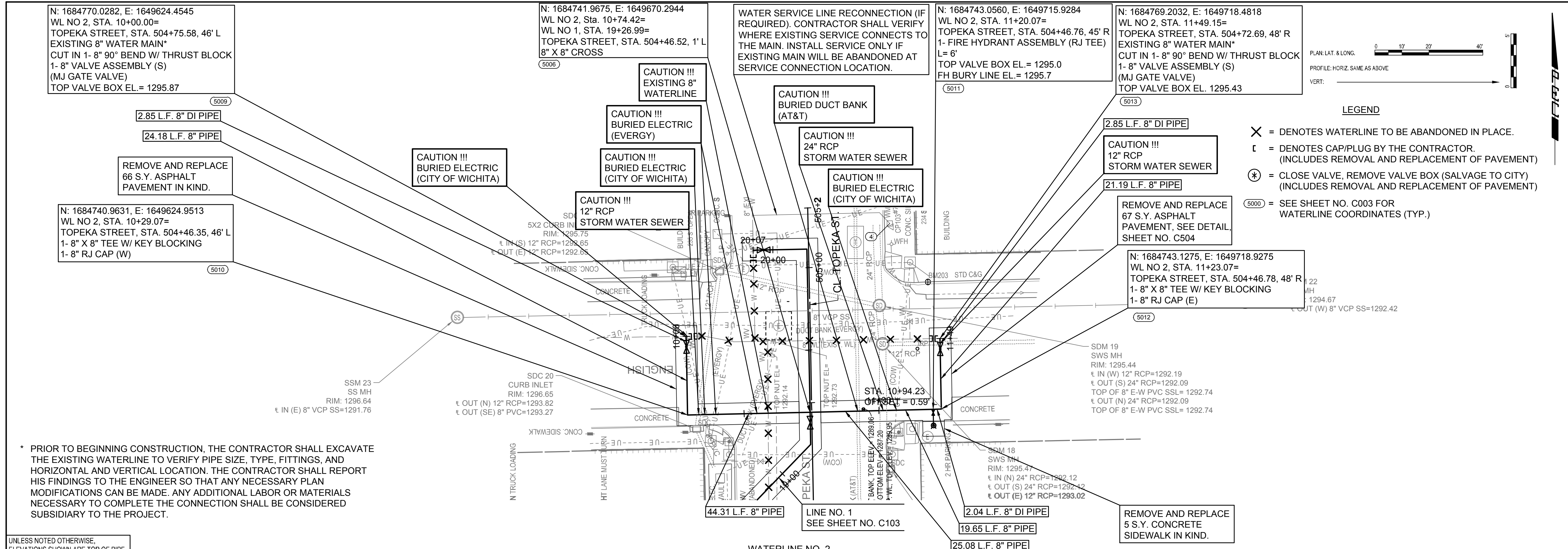


SAVED 10/1/2021 10:55:48 AM BY KURTIS DEKAT  
 PLOTTED 10/1/2021 10:56:20 AM BY KURTIS DEKAT  
 U:\WICHITA-CIVIL\2020\207042\002\MONITORING\207042-002-C104-WATERLINE NO.2.DWG



WATERLINE NO. 2	
1310	1310
1305	1305
1300	1300
1295	1295
1290	1290
1285	1285
1280	1280
1275	1275
1270	1270
1265	1265

Station	Notes
1291.50	BEGIN WL NO. 2
1291.42	EXISTING 8" WL
1291.42	8" GATE VALVE
1289.00	8" X 8" X 8" TEE
1289.00	12" RCP
1289.00	EL = 1293.71
1288.90	BURIED ELECTRIC
1288.90	ELECTRIC DUCT BANK
1288.90	TOP ELEV. = 1292.56
1288.90	EXIST. 8" WATERLINE
1288.90	TOP PIPE = VERIFY
1288.90	8" X 8" CROSS
1288.90	TELEPHONE DUCT BANK
1288.90	TOP = 1289.06
1288.90	24" RCP
1288.90	EL = 1292.07
1288.90	ELECTRIC DUCT BANK
1288.90	TOP ELEV. = 1293.41
1291.84	FIRE HYDRANT
1291.78	8" X 8" X 8" TEE
1291.54	8" GATE VALVE
1291.54	12" RCP
1291.50	EL = 1293.01
1291.50	END WL NO. 2
1291.50	EXISTING 8" WL

**WATERLINE IMPROVEMENTS**  
 TO SERVE  
**TOPEKA STREET**  
**FROM LEWIS TO ENGLISH**

GARY JANZEN, P.E. - CITY ENGINEER  
 CITY OF WICHITA PROJECT NO. 448-2020-

Issue:	
JOB NO.	35-207042-002-0042
DATE	SEPTEMBER 2021
PM	RWG
DESIGNED BY	TBK
DRAWN BY	KTD
CHECKED BY	RWG

WATERLINE NO. 2

**C104**