

CP #1 - Thimble
 B.L. Sta. 23+67.87, 0.00' Rt.
 N=1712008.749
 E=1622686.757

CP #4 - Thimble
 B.L. Sta. 50+00.00, 0.00' Rt
 N=1714639.870
 E=1622613.773

CP #7 - Stone
 B.L. Sta. 126+51.81, 0.00' Lt.
 N=1714683.028
 E=1625265.223

CP #2 - Chiseled "□" at Centerline of Inlet
 B.L. Sta. 39+45.16, 28.81' Rt.
 N=1713586.230
 E=1622671.819

CP #5 - Railroad Spike in South Face of Power Pole
 B.L. Sta. 107+48.65, 27.17' Lt.
 N=1714679.223
 E=1623361.884

CP #3 - Chiseled Crow's Foot at Middle of SE Curb
 B.L. Sta. 49+68.53, 36.56' Rt
 N=1714609.423
 E=1622651.195

CP #6 - 60D Step in South Face of Power Pole
 B.L. Sta. 115+15.89, 27.34' Lt.
 N=1714691.877
 E=1624129.019

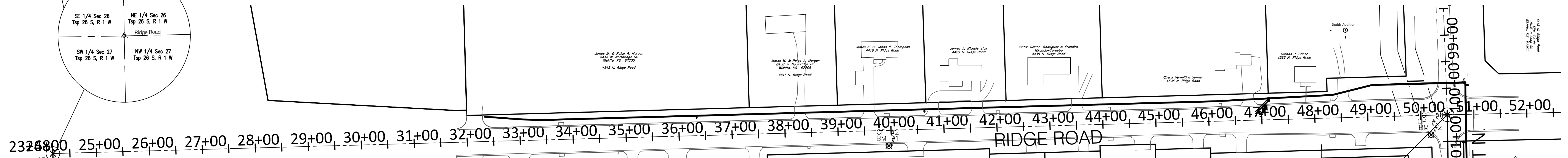
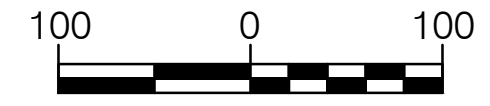
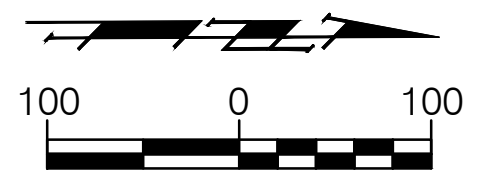
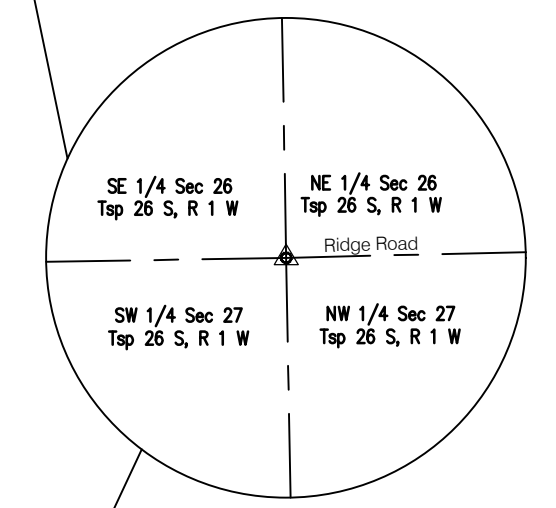
BM #1 - Chiseled "□" at the Centerline of the Inlet on the East Side of Ridge Road, Across the Street from 4419 Ridge Road.
 Elev. = 1333.85 (NAVD 88)

BM #2 - Chiseled Crow's Foot at the Middle of the South East Curb Return at the Intersection of Ridge Road and 45th Street North.
 Elev. = 1337.09 (NAVD 88)

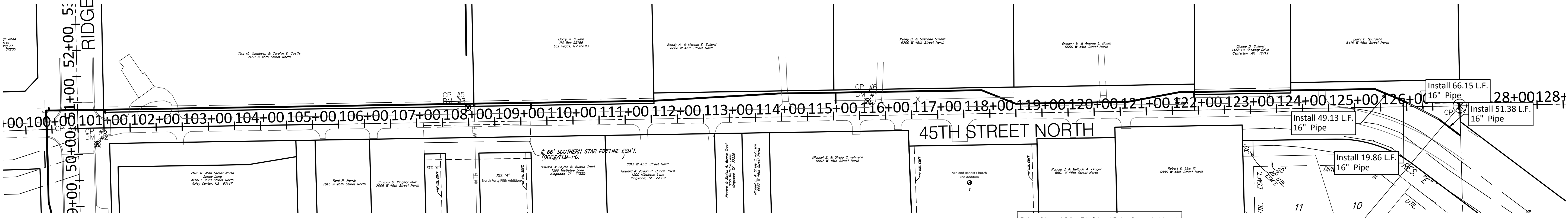
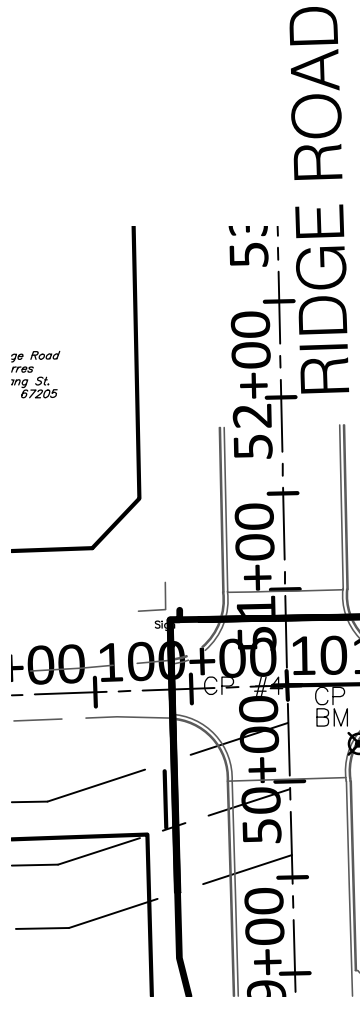
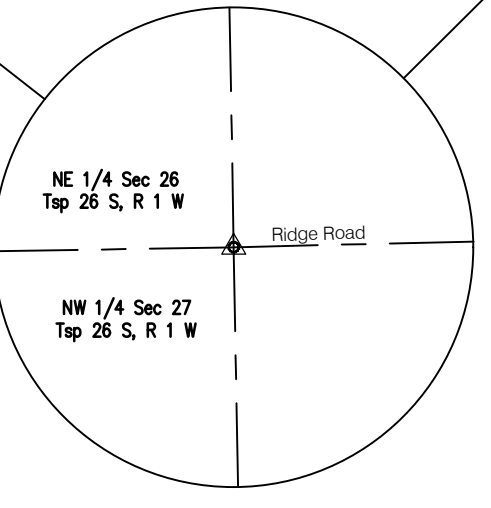
BM #3 - Railroad Spike in the South Face of the Power Pole on the North Side of 45th Street North at the East Property Line of North Forty-Fifth Addition.
 Elev. = 1336.53 (NAVD 88)

BM #4 - 60d Step in the South Face of the Power Pole on the North Side of 45th Street North, on the West Side of the Driveway to 6700 W. 45th Street North.
 Elev. = 1340.80 (NAVD 88)

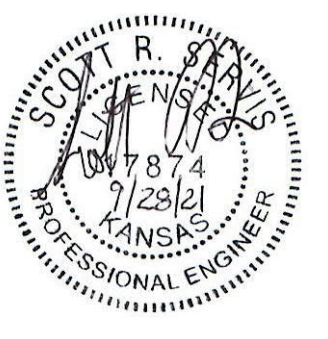
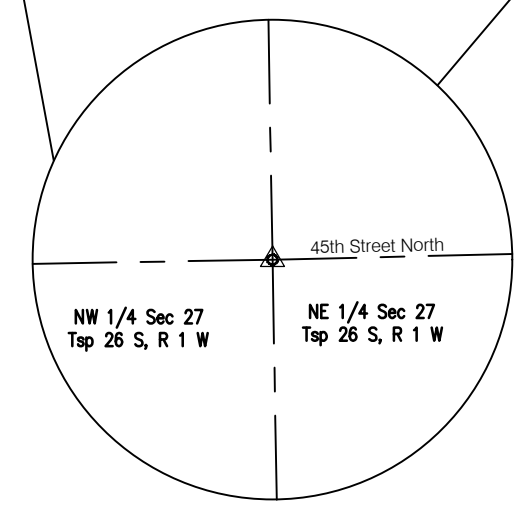
B.L. Sta. 23+67.87, Ridge Road
 SW Corner, NW 1/4, Sec 27
 Township 26 South, Range 1 W
 N= 1712008.749, E= 1622686.757



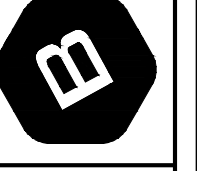
B.L. Sta. 50+00.00, Ridge Road
 B.L. Sta. 100+00.00, 45th Street North
 NW Corner, NW 1/4, Sec 27
 Township 26 South, Range 1 W
 N= 1714639.870, E= 1622613.773



B.L. Sta. 126+51.81, 45th Street North
 NE Corner, NW 1/4, Sec 27
 Township 26 South, Range 1 W
 N= 1714683.028, E= 1625265.223



BAUGHMAN COMPANY
 315 Ellis St.
 Wichita, KS 67211
 316-262-7271
 BaughmanCo.com



Capital Improvement Projects
KEYSHEET
 Ridge Road and 45th Street North Water Main Extension
 PROJECT NUMBER: 448-2020-01135
 INTERNAL NUMBER: 20-04-E573
 DESIGN: SRS
 DRAWN: SRS
 DATE: Aug. 2021
 SHEET
 OF
 2
 18