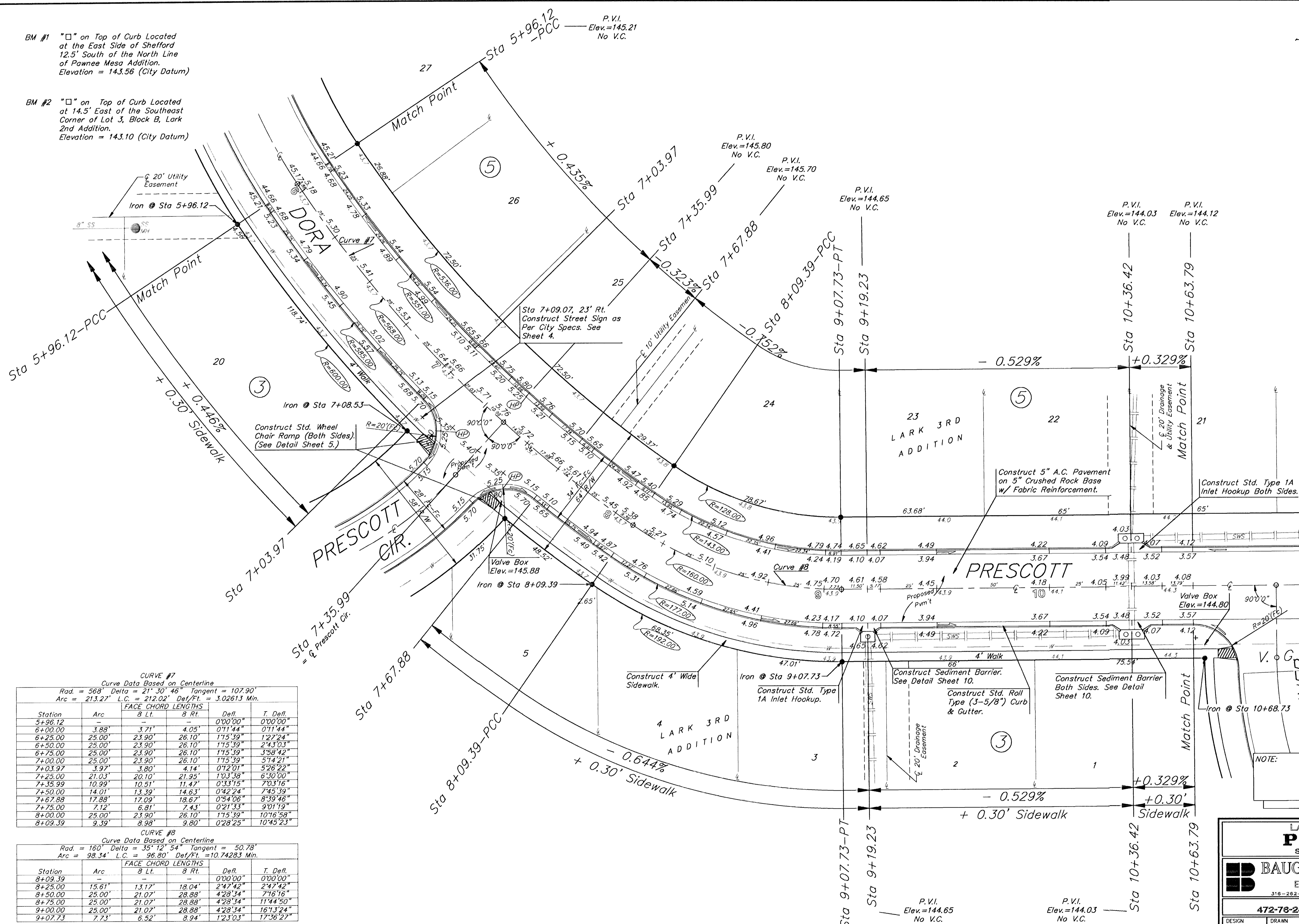


BM #1 "□" on Top of Curb Located at the East Side of Shefford 12.5' South of the North Line of Pawnee Mesa Addition. Elevation = 143.56 (City Datum)

BM #2 "□" on Top of Curb Located at 14.5' East of the Southeast Corner of Lot 3, Block B, Lark 2nd Addition. Elevation = 143.10 (City Datum)



Scale: 1" = 20'  
● = Iron



CURVE #7  
Curve Data Based on Centerline

Rad. = 568' Delta = 21° 30' 46" Tangent = 107.90'  
Arc = 213.27' L.C. = 212.02' Def./Ft. = 3.02613 Min.

Station	Arc	FACE CHORD LENGTHS		Defl.	T. Defl.
		8 Lt.	8 Rt.		
5+96.12	-	-	-	0°00'00"	0°00'00"
6+00.00	3.88'	3.71'	4.05'	0°11'44"	0°11'44"
6+25.00	25.00'	23.90'	26.10'	1°15'39"	1°27'24"
6+50.00	25.00'	23.90'	26.10'	1°15'39"	2°43'03"
6+75.00	25.00'	23.90'	26.10'	1°15'39"	3°58'42"
7+00.00	25.00'	23.90'	26.10'	1°15'39"	5°14'21"
7+03.97	3.97'	3.80'	4.14'	0°12'01"	5°26'22"
7+25.00	21.03'	20.10'	21.95'	1°03'38"	6°30'00"
7+35.99	10.99'	10.51'	11.47'	0°33'15"	7°03'16"
7+50.00	14.01'	13.39'	14.63'	0°42'24"	7°45'39"
7+67.88	17.88'	17.09'	18.67'	0°54'06"	8°39'46"
7+75.00	7.12'	6.81'	7.43'	0°21'33"	9°01'19"
8+00.00	25.00'	23.90'	26.10'	1°15'39"	10°16'58"
8+09.39	9.39'	8.98'	9.80'	0°28'25"	10°45'23"

CURVE #8  
Curve Data Based on Centerline

Rad. = 160' Delta = 35° 12' 54" Tangent = 50.78'  
Arc = 98.34' L.C. = 96.80' Def./Ft. = 10.74283 Min.

Station	Arc	FACE CHORD LENGTHS		Defl.	T. Defl.
		8 Lt.	8 Rt.		
8+09.39	-	-	-	0°00'00"	0°00'00"
8+25.00	15.61'	13.17'	18.04'	2°47'42"	2°47'42"
8+50.00	25.00'	21.07'	28.88'	4°28'34"	7°16'16"
8+75.00	25.00'	21.07'	28.88'	4°28'34"	11°44'50"
9+00.00	25.00'	21.07'	28.88'	4°28'34"	16°13'24"
9+07.73	7.73'	6.52'	8.94'	1°23'03"	17°36'27"

NOTE: ROLL TYPE CURB & GUTTER TO BE CONSTRUCTED ON THE PAVEMENT SHOWN ON THIS SHEET. TOP OF CURB ELEVATIONS ARE GIVEN FOR FULL HEIGHT CURB.

**LARK 3RD ADDITION**  
**PRESCOTT**  
Sta 5+96.12 to Sta 10+63.79

**BAUGHMAN COMPANY P. A.**  
ENGINEERING, SURVEYING, & PLANNING  
318-282-7271 • 315 ELLIS • WICHITA, KANSAS 67211

PROJECT NUMBER  
**472-78-245-82728-000-001**

DESIGN: BP    DRAWN: TMG    APPROVED: \_\_\_\_\_    DATE: 7-96    SCALE: 1" = 20'

SHEET **8** OF **21**