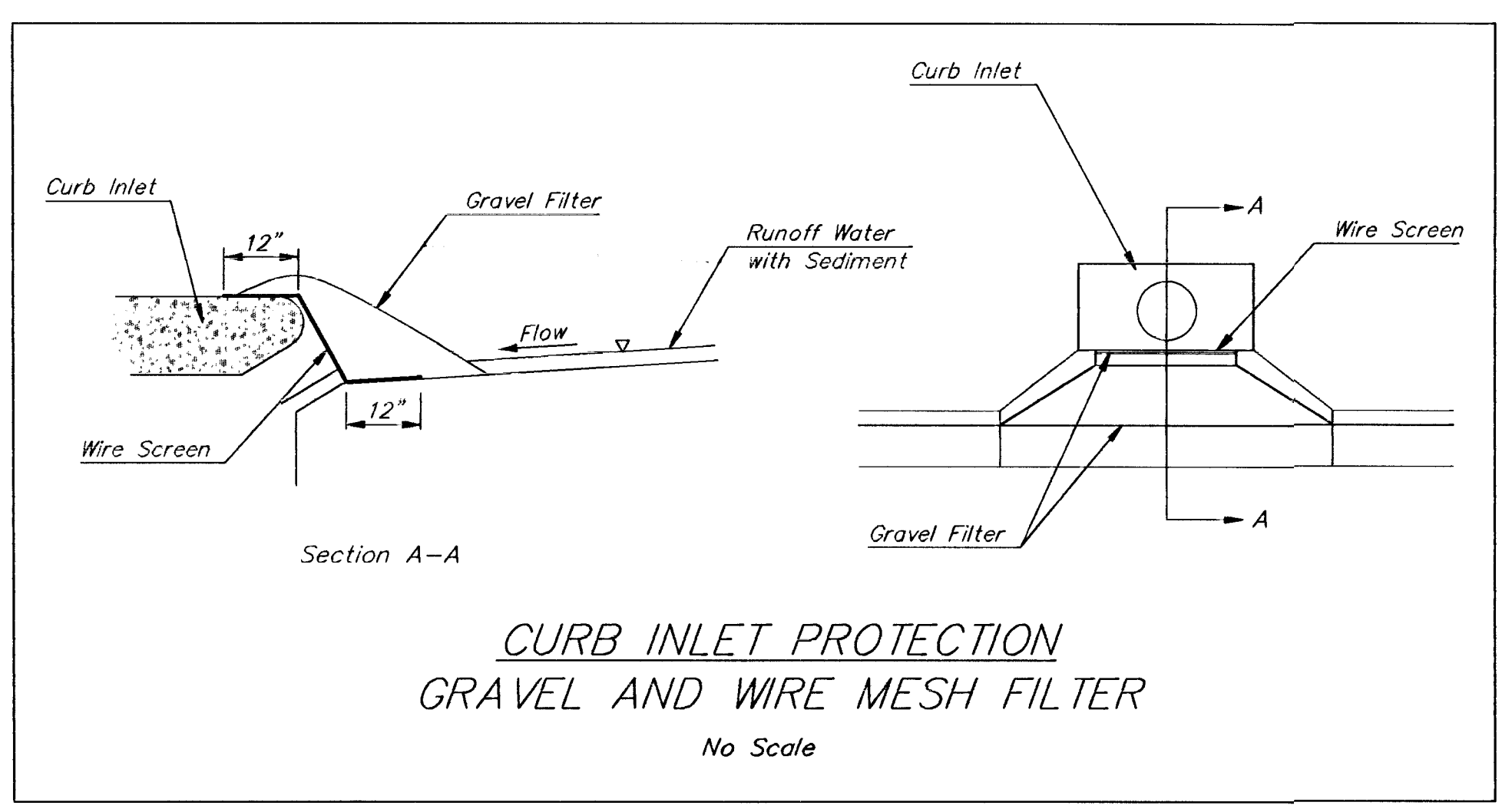
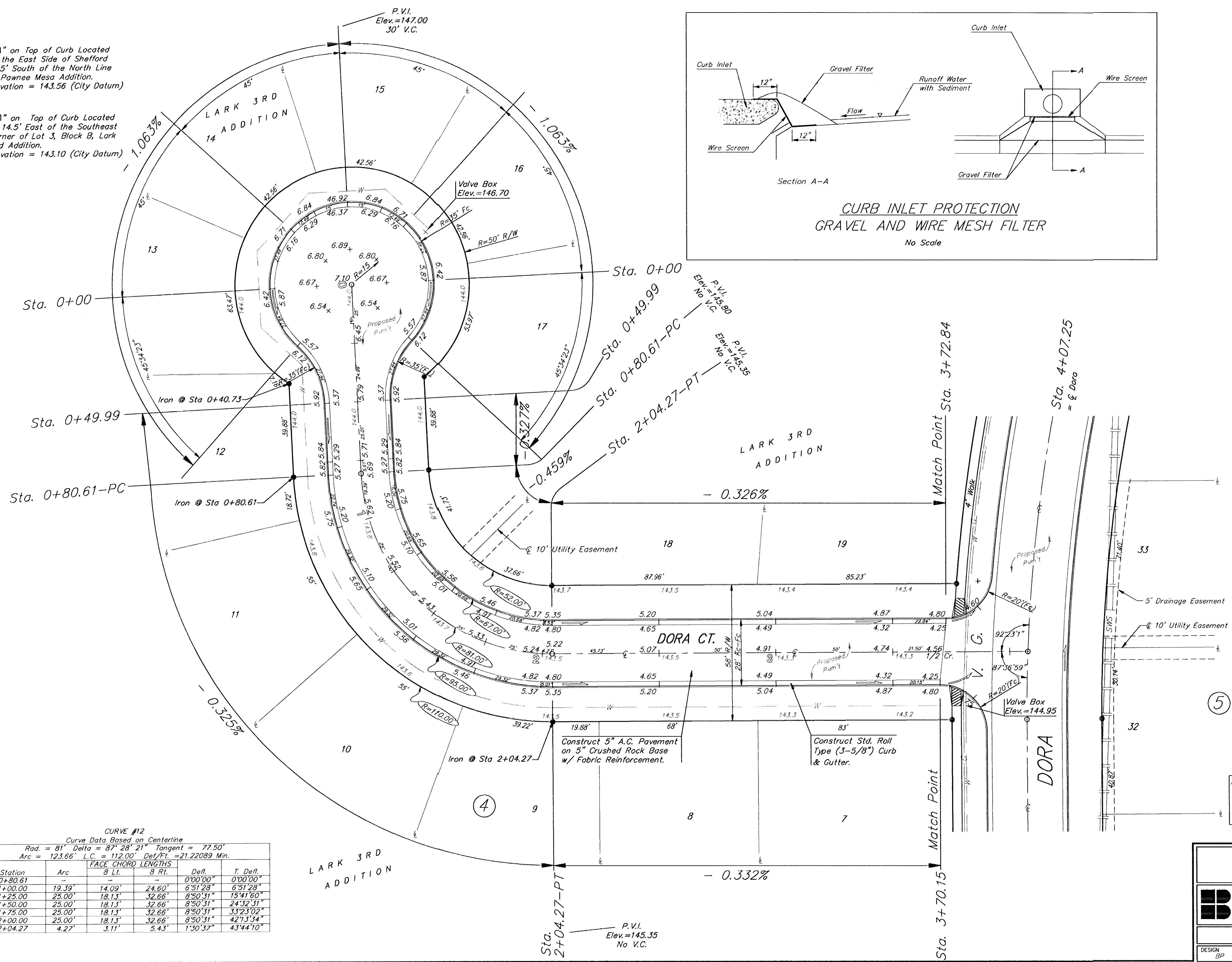


BM #1 "□" on Top of Curb Located at the East Side of Shefford 12.5' South of the North Line of Pawnee Mesa Addition. Elevation = 143.56 (City Datum)

BM #2 "□" on Top of Curb Located at 14.5' East of the Southeast Corner of Lot 3, Block B, Lark 2nd Addition. Elevation = 143.10 (City Datum)



Scale: 1" = 20'  
● = Iron



CURVE #12  
Curve Data Based on Centerline  
Rad. = 81' Delta = 87° 28' 21" Tangent = 77.50'  
Arc = 123.66' L.C. = 112.00' Def/Ft. = 21.22089 Min.

Station	Arc	FACE CHORD LENGTHS		Def.	T. Defl.
		B Lt.	B Rt.		
0+80.61	-	-	-	0'00.00"	0'00.00"
1+00.00	19.39'	14.09'	24.60'	6'51.28"	6'51.28"
1+25.00	25.00'	18.13'	32.66'	8'50.31"	13'41.60"
1+50.00	25.00'	18.13'	32.66'	8'50.31"	24'32.31"
1+75.00	25.00'	18.13'	32.66'	8'50.31"	33'23.02"
2+00.00	25.00'	18.13'	32.66'	8'50.31"	42'13.34"
2+04.27	4.27'	3.11'	5.43'	1'30.37"	43'44.10"

NOTE: ROLL TYPE CURB & GUTTER TO BE CONSTRUCTED ON THE PAVEMENT SHOWN ON THIS SHEET. TOP OF CURB ELEVATIONS ARE GIVEN FOR FULL HEIGHT CURB.

LARK 3RD ADDITION  
**DORA CT.**  
Sta 0+00 to Sta 3+72.84

**BAUGHMAN COMPANY P.A.**  
ENGINEERING, SURVEYING, & PLANNING  
316-282-7271 • 315 ELLIS • WICHITA, KANSAS 67211

PROJECT NUMBER  
**472-78-245-82728-000-001**

DESIGN: BP DRAWN: BH APPROVED: DATE: 7-96 SCALE: 1" = 20'

SHEET **10** OF **21**