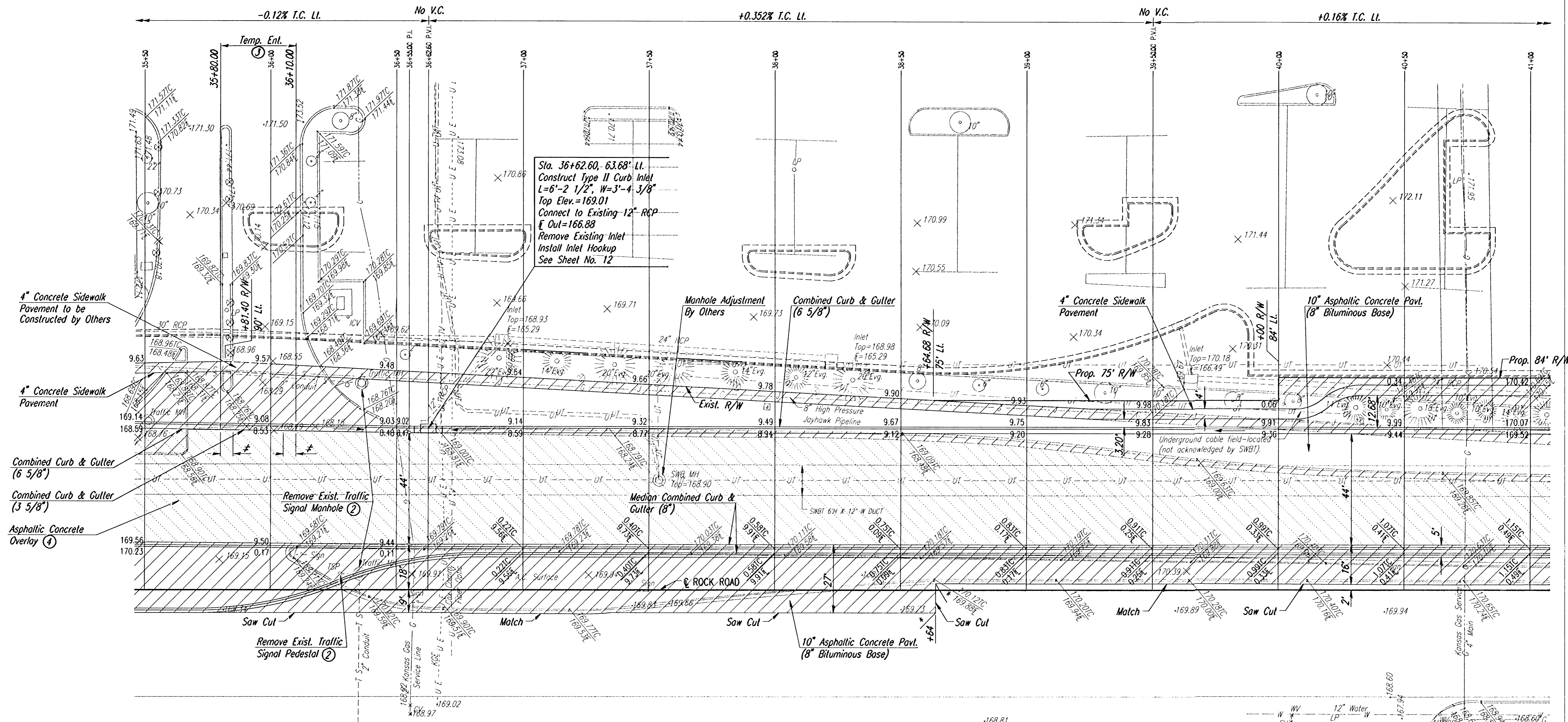


SCALE: 1"=20'

See Spot Elevations for Walk Grade



① The Bid Item "Pavement Removal" shall include the Removal of all Indicated Asphalt, Curb & Gutter, Islands, and Sidewalk.

② Remove all Traffic Signal Poles, Pedestal, Manholes, Concrete Bases, Conduit, Cabeling, Controller, and Misc. Items Relating to the Traffic Signal Operation. Salvage and Deliver all Items to the C.M.F. at 1801 S. McLean Blvd. Attention: Jim Parks

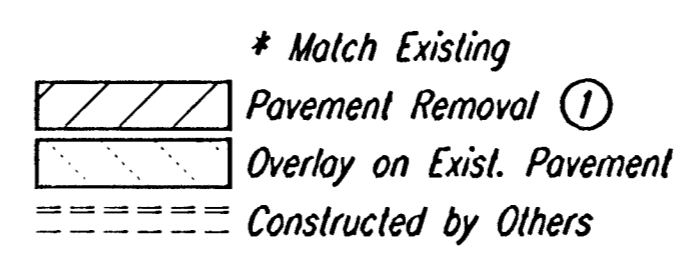
The Removal and Delivery of the above Items is Considered Subsidiary to the Lump Sum Bid Item "Site Clearing".

③ Temporary entrance shall consist of 30 L.F. of combined curb & gutter (3 5/8"). The indicated pavement shall be removed and all materials needed to complete the entrance shall be provided by others. The use of the entrance shall be limited to equipment for the Towne East construction.

④ The Bid Item "Asphaltic Concrete Overlay" shall be bid and paid for per Square Yards. The Thickness of the overlay Varies with an Average Thickness of 0'-6", which includes the 2" Asphaltic Concrete Wearing Surface. This Equals to a Volume of Asphalt equal to 1,560 Tons Computed at 145lbs./Cu. Ft.

Note: All Sawed Joints are Subsidiary to the Bid Item "Pavement Removal".

≠ 5' Transition from Combined Curb & Gutter (6 5/8") to Combined Curb & Gutter (3 5/8"). To be paid for as "Combined Curb & Gutter (3 5/8)".



DSMR: PMM OPER: BJS SCALE: 1"=20' 1/1999/99687/001/ROCK.DGN 6-27-2000

No.	Revisions	By	Date

CITY OF WICHITA, KANSAS

ROCK ROAD
STA. 35+50 TO STA. 41+00

Professional Engineering Consultants, P.A.
303 S. TOPEKA • WICHITA, KANSAS 67202
316-262-2691 • FAX 316-262-3003

Designed by	BER, PMM	Checked by	
Drawn by	BJS	Date	MARCH 2000
		Job No.	99687-1