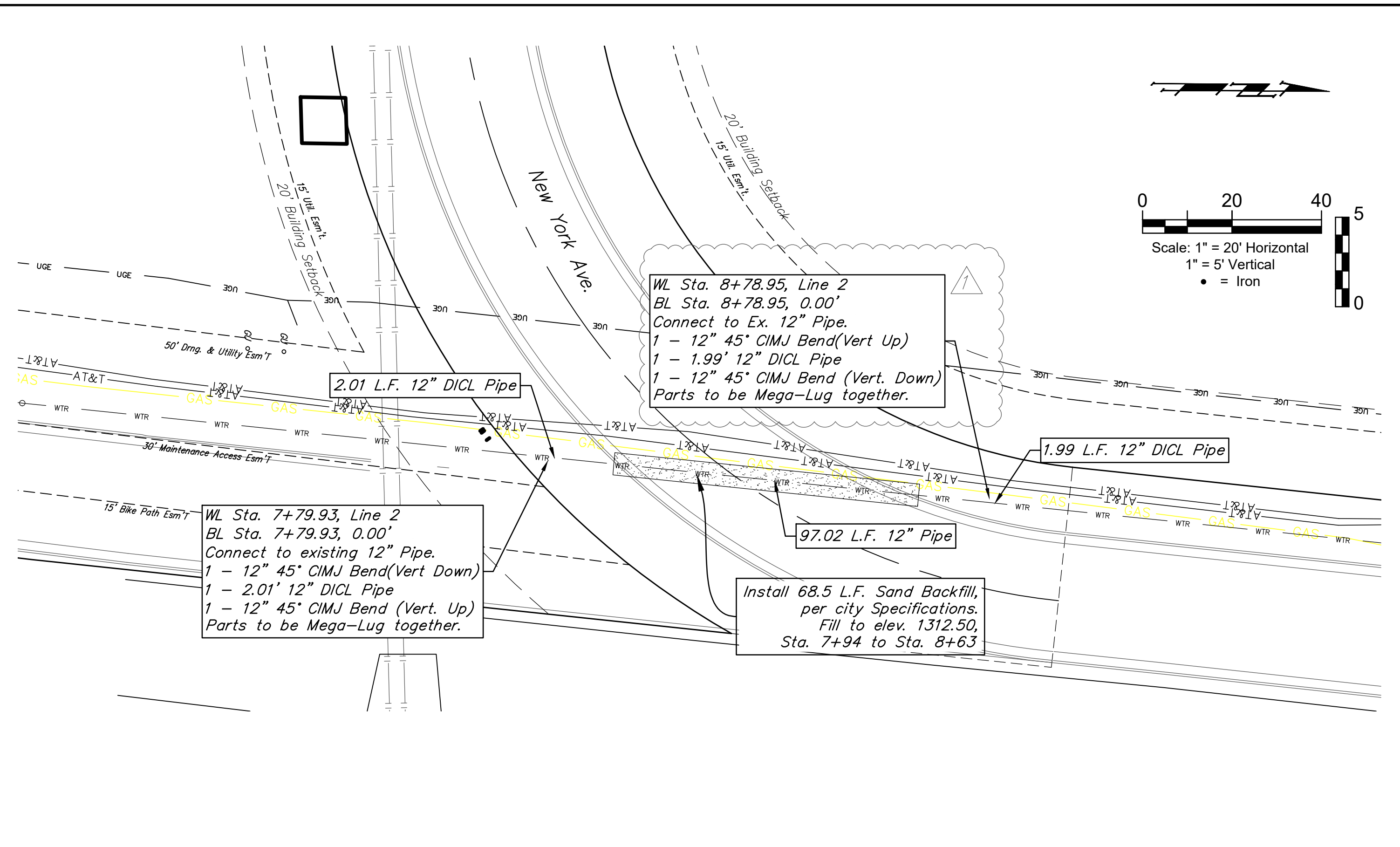
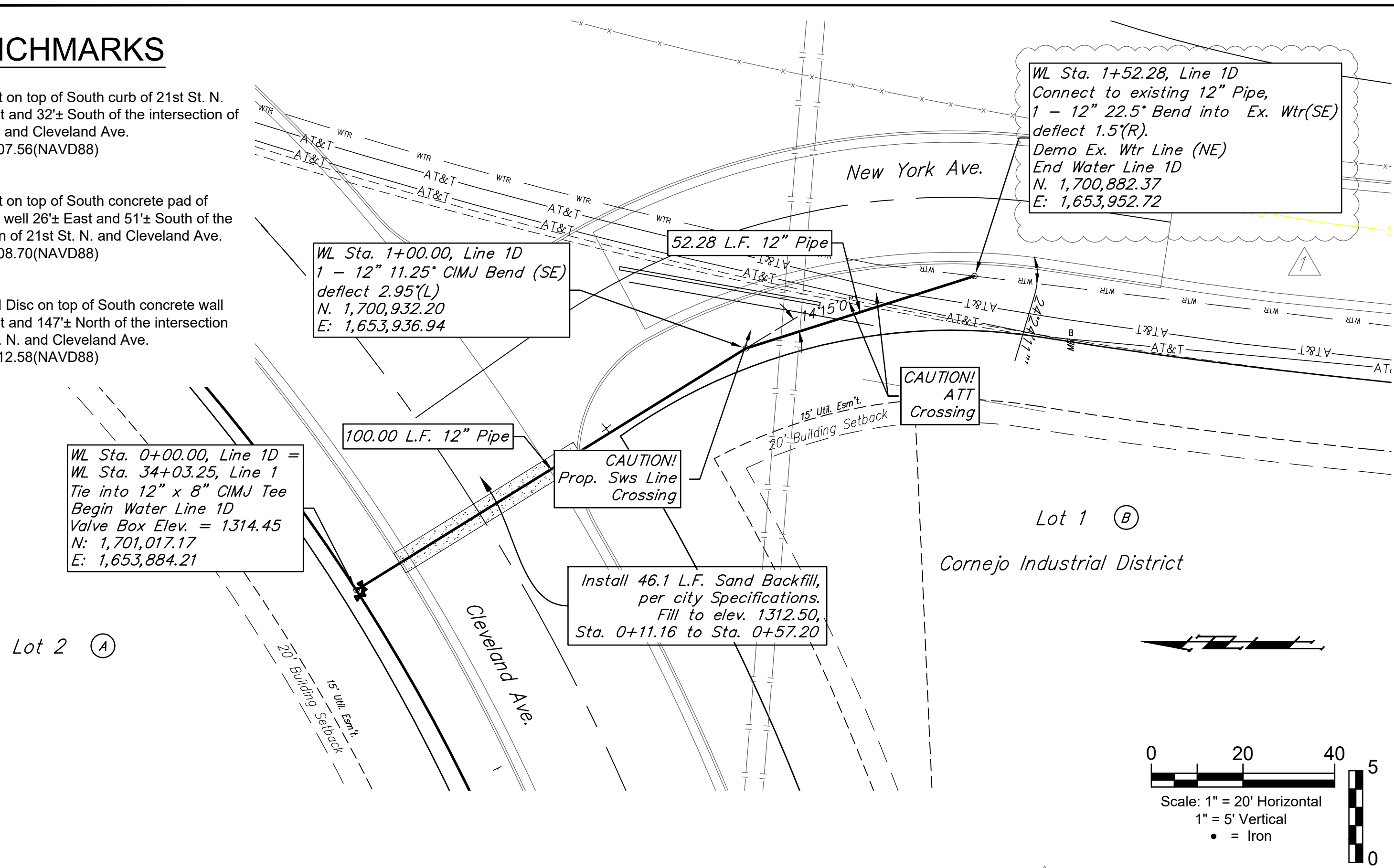


BENCHMARKS

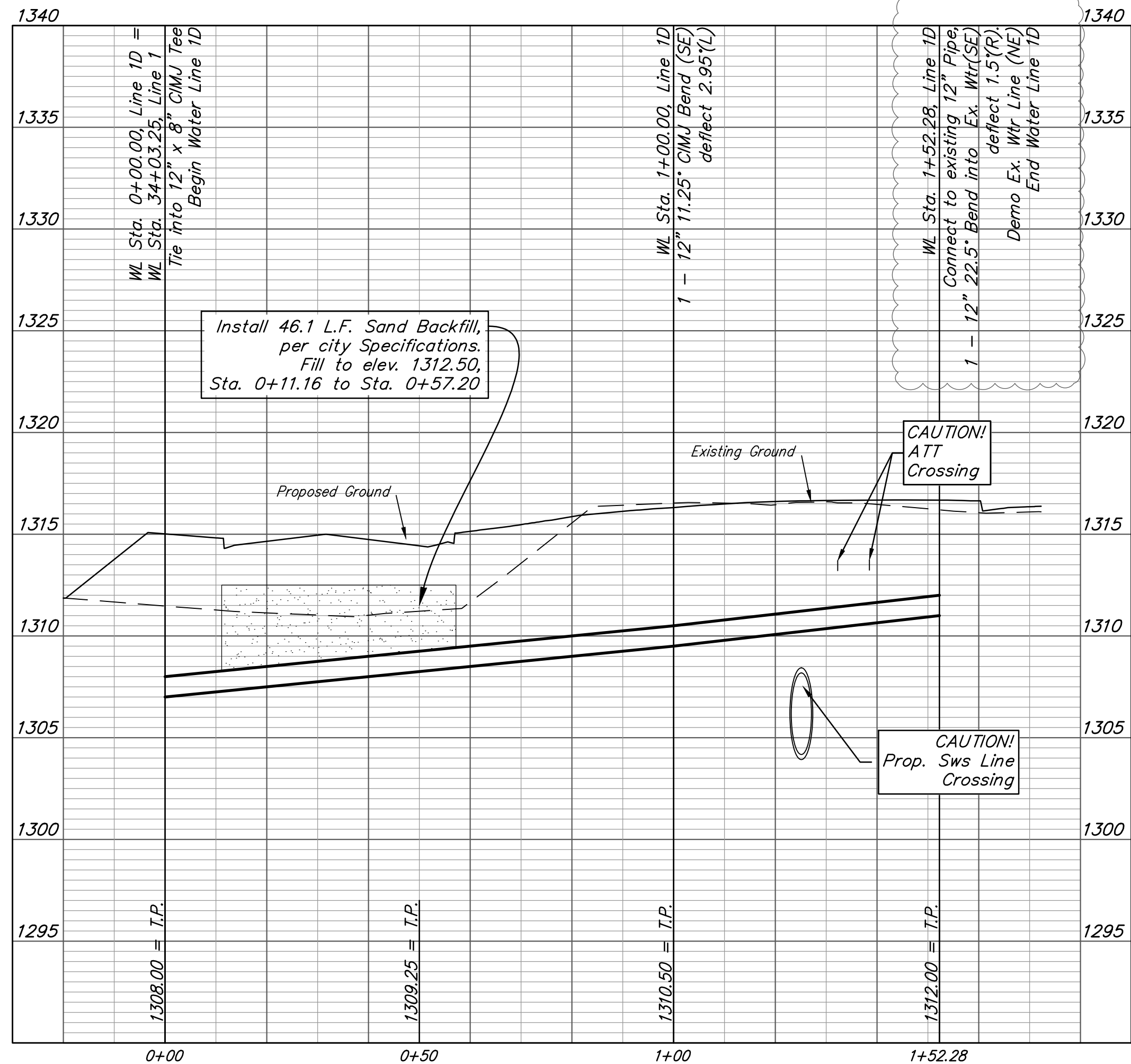
BM- #1:
Square cut on top of South curb of 21st St. N.
334'± West and 32'± South of the intersection of
21st St. N. and Cleveland Ave.
Elev. = 1307.56(NAVD88)

BM- #2:
Square cut on top of South concrete pad of
monitoring well 26'± East and 51'± South of the
intersection of 21st St. N. and Cleveland Ave.
Elev. = 1308.70(NAVD88)

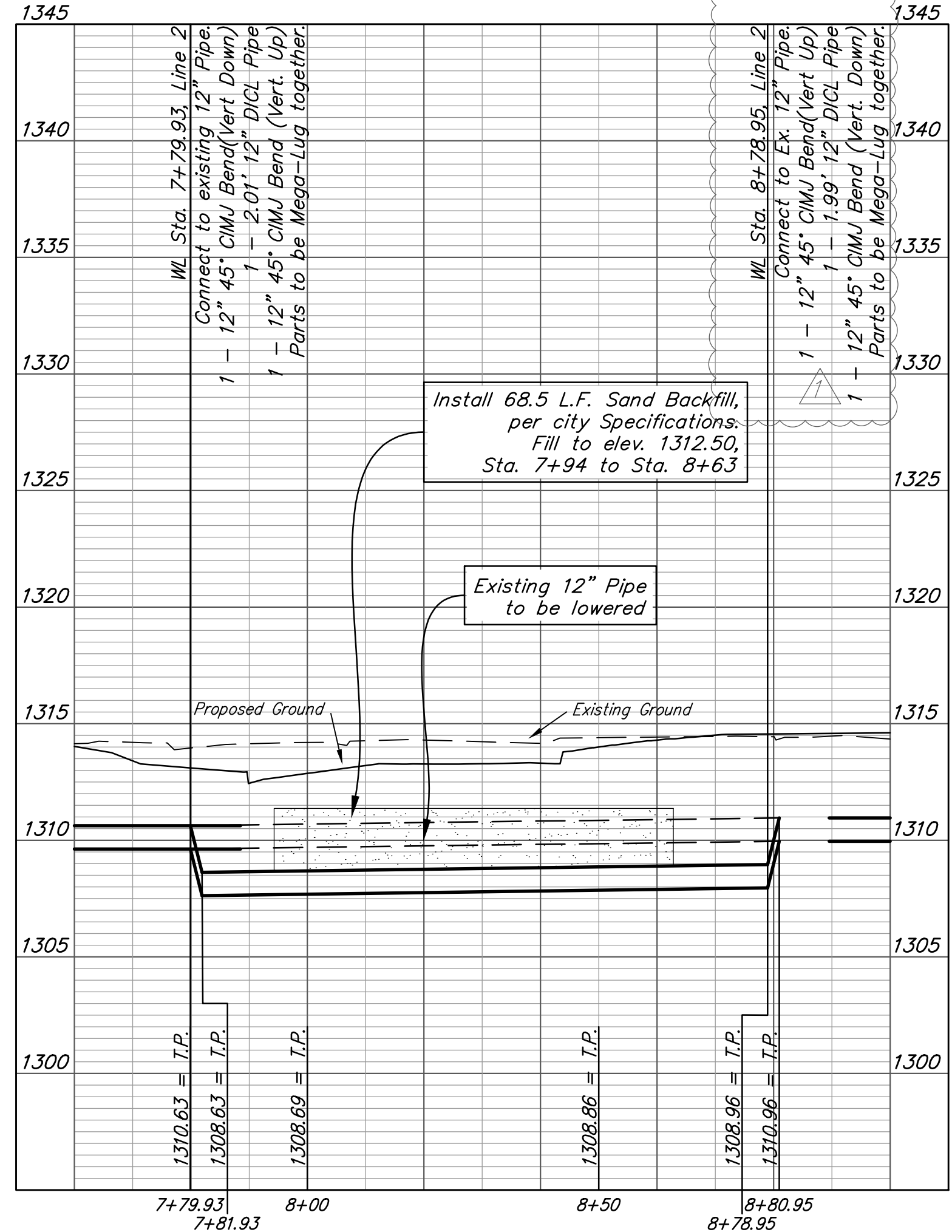
BM- #3:
C.O.W BM Disc on top of South concrete wall
918'± West and 147'± North of the intersection
of 21st St. N. and Cleveland Ave.
Elev. = 1312.58(NAVD88)



LINE 1D



LINE 2



Revised 11-17-2021:
Revised callout at Sta 1+52,
WTR Line 1D, Sta 7+79 &
8+80, WTR Line 2...

BAUGHMAN COMPANY
315 Ellis St.
Wichita, KS 67211
316-262-7271
BaughmanCo.com

Cornejo Industrial District

**Water Line 1D
&
Water Line 2**

Water Line Improvements
PROJECT NUMBER:
448-2021-017262
DESIGN: PSB DRAWN: JA
DATE: Oct. 26, 2021
SHEET **15** OF **26**

File: E:\Projects\Cornejo Industrial District_20-11-P603\Engineering\Phase 1 (only if Multiple Phases)\PPW\CID PPW Peltion.dwg