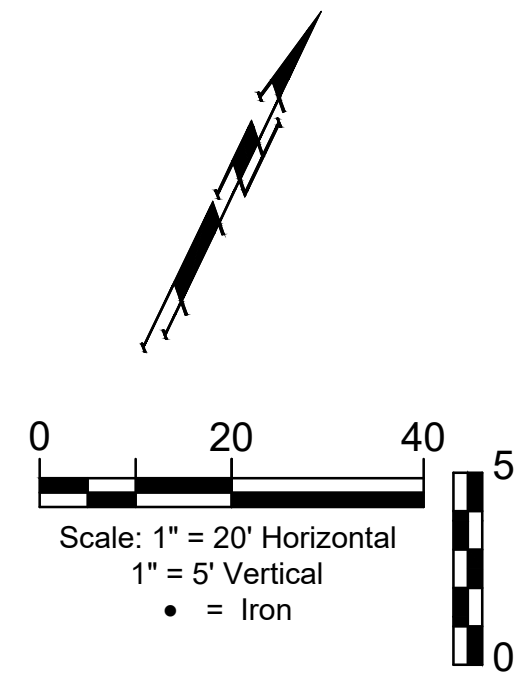


BENCHMARKS

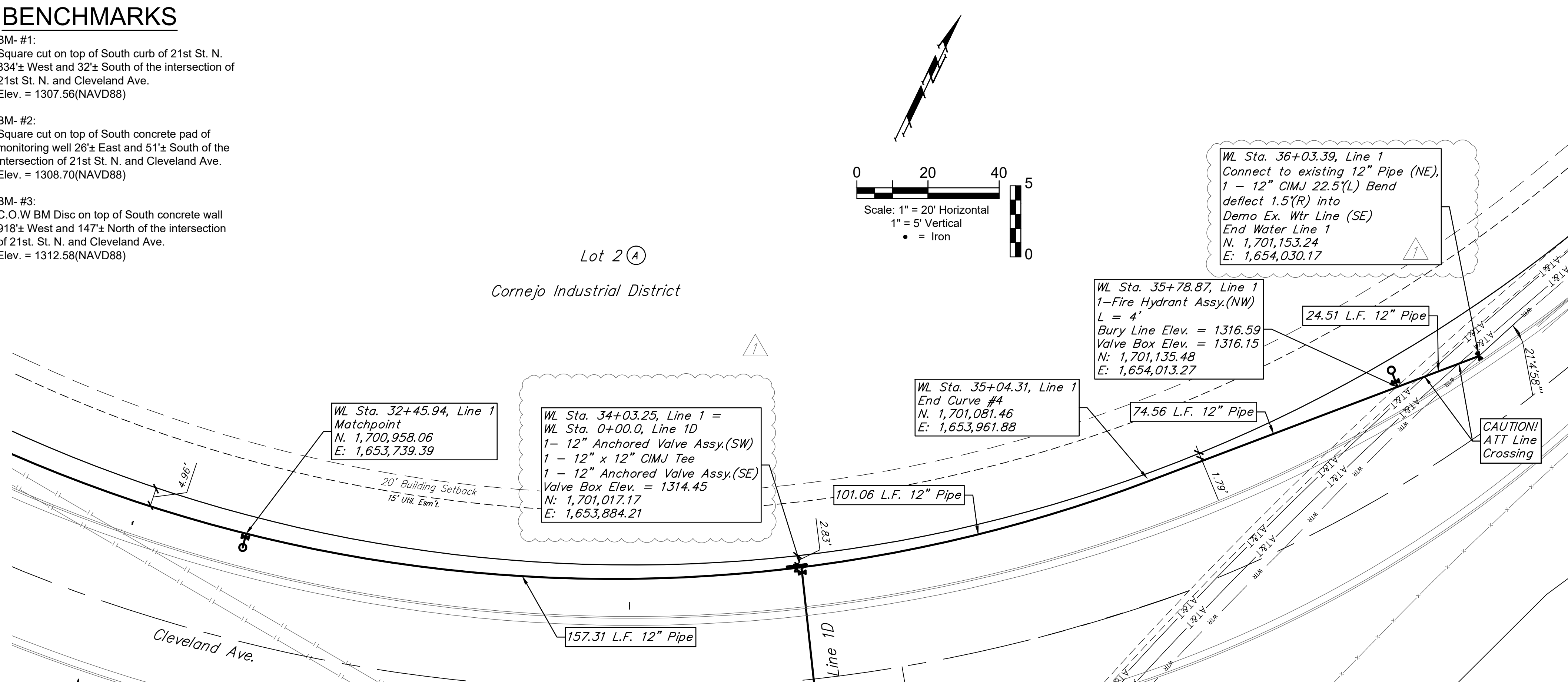
BM- #1:
Square cut on top of South curb of 21st St. N.
334± West and 32± South of the intersection of
21st St. N. and Cleveland Ave.
Elev. = 1307.56(NAVD88)

BM- #2:
Square cut on top of South concrete pad of
monitoring well 26± East and 51± South of the
intersection of 21st St. N. and Cleveland Ave.
Elev. = 1308.70(NAVD88)

BM- #3:
C.O.W BM Disc on top of South concrete wall
918± West and 147± North of the intersection
of 21st St. N. and Cleveland Ave.
Elev. = 1312.58(NAVD88)

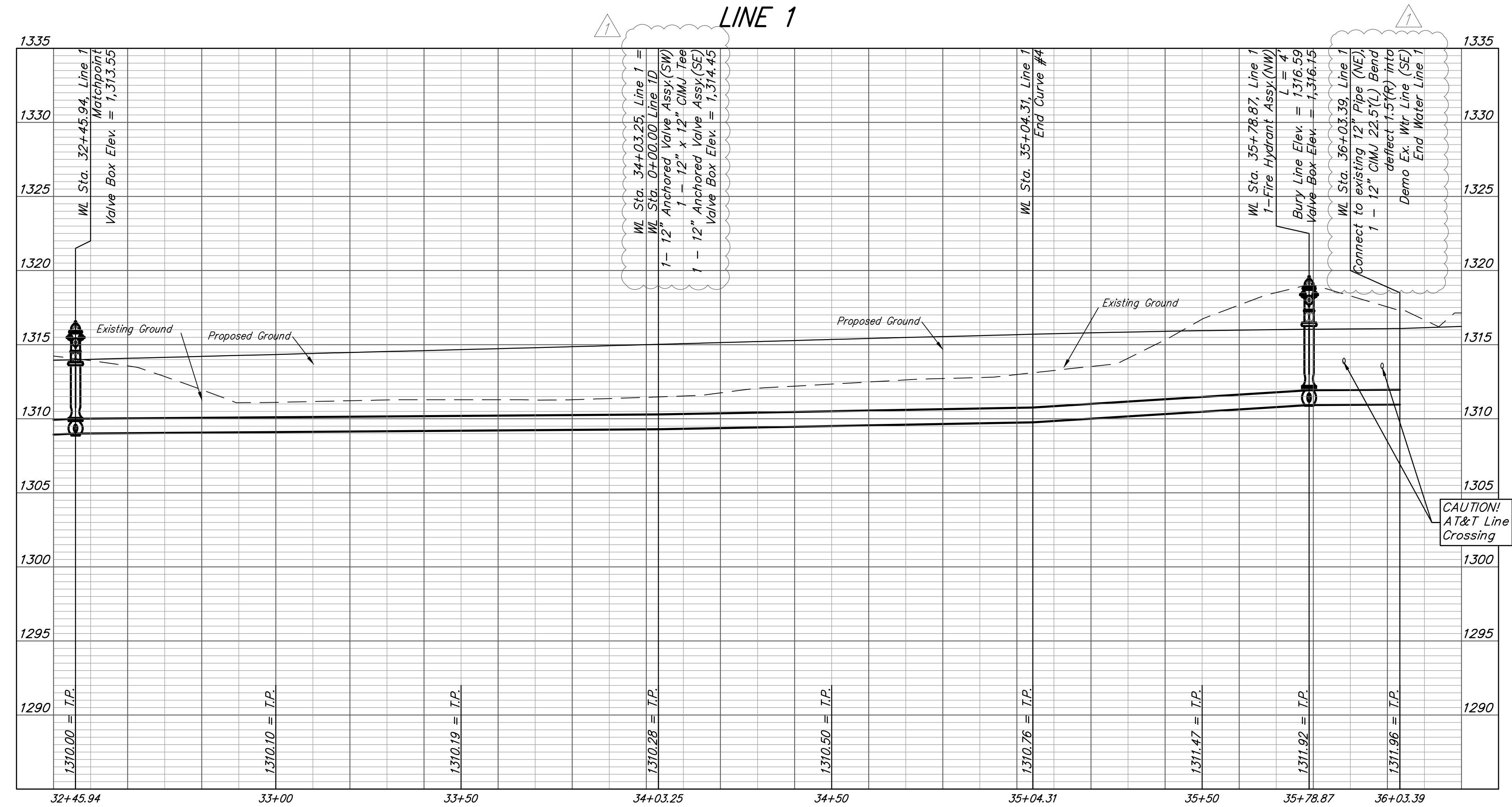


Lot 2 (A)
Cornejo Industrial District



STATION	BURY LINE ELEVATION	TOP OF PIPE ELEVATION	FIRE HYDRANT BURY REQUIRED*	VALVE STEM EXT. REQUIRED (ft)*
35+78.87	1316.59	1311.92	5.5'	3'

Curve Data Based on Centerline of Pipe					
Rad. = 425.0578' Delta = 45°32'12" Tangent = 178.40'					
Arc = 328.41' L.C. = 329.00' Def./Ft. = 4.15974 Min.					
Station	Arc	Chord Lengths 8' Left	Chord Lengths 8' Right	Defl.	Total Defl.
31+75.90	-	-	-	0'00'00"	0'00'00"
32+00.00	24.10'	24.32'	25.25'	1'40'15"	1'40'15"
32+25.00	25.00'	25.23'	26.20'	1'44'00"	3'24'15"
32+50.00	25.00'	25.23'	26.20'	1'43'59"	5'08'14"
32+75.00	25.00'	25.23'	26.20'	1'44'00"	6'52'14"
33+00.00	25.00'	25.23'	26.20'	1'43'59"	8'36'13"
33+25.00	25.00'	25.23'	26.20'	1'44'00"	10'20'13"
33+50.00	25.00'	25.23'	26.20'	1'44'00"	12'04'13"
33+75.00	25.00'	25.23'	26.20'	1'43'59"	13'48'12"
34+00.00	25.00'	25.23'	26.20'	1'44'00"	15'32'12"
34+25.00	25.00'	25.23'	26.20'	1'43'59"	17'16'11"
34+50.00	25.00'	25.23'	26.20'	1'44'00"	19'00'11"
34+75.00	25.00'	25.23'	26.20'	1'44'00"	20'44'11"
35+00.00	25.00'	25.23'	26.20'	1'43'59"	22'28'10"
35+04.31	4.31'	4.35'	4.52'	0'17'56"	22'46'06"



DEPTH UNKNOWN
Contractor to Verify
Depth & Location of
AT&T Lines Prior to
Construction.

Revised 11-17-2021.
Revised callouts at Sta 34+03
& 36+03, WTR Line 1.

BAUGHMAN COMPANY

315 Ellis St.
Wichita, KS 67211
316-262-7271
BaughmanCo.com

Cornejo Industrial District

**Water Line 1
Sta. 32+40
to
Sta. 36+03**

Water Line
Improvements

PROJECT NUMBER:
448-2021-017262

DESIGN: PSB DRAWN: JA

DATE: Oct. 26, 2021

SHEET **8** OF **26**