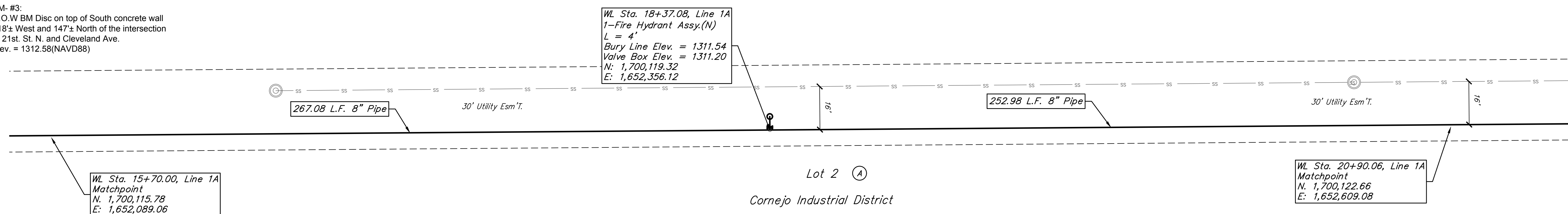
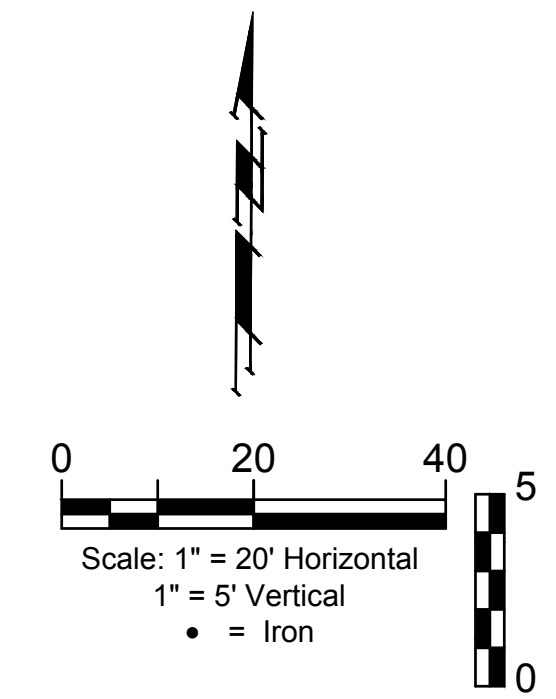


# BENCHMARKS

BM- #1:  
Square cut on top of South curb of 21st St. N.  
334± West and 32± South of the intersection of  
21st St. N. and Cleveland Ave.  
Elev. = 1307.56(NAVD88)

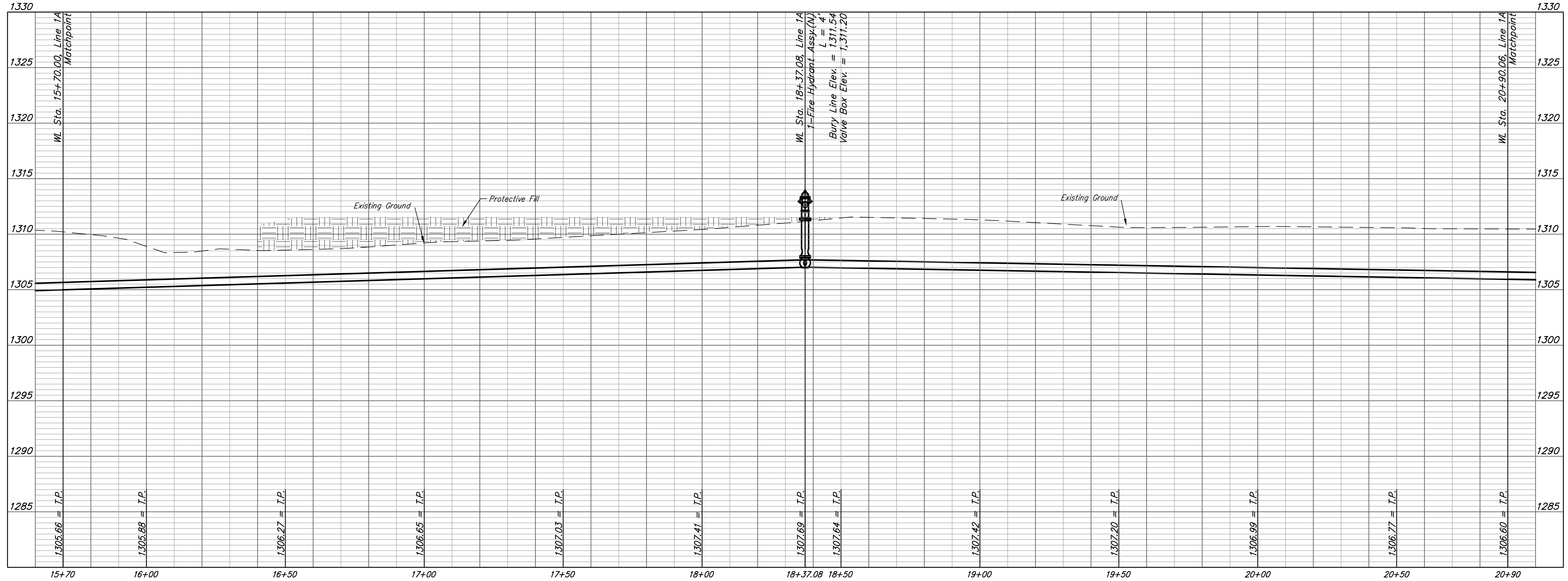
BM- #2:  
Square cut on top of South concrete pad of  
monitoring well 26± East and 51± South of the  
intersection of 21st St. N. and Cleveland Ave.  
Elev. = 1308.70(NAVD88)

BM- #3:  
C.O.W BM Disc on top of South concrete wall  
918± West and 147± North of the intersection  
of 21st St. N. and Cleveland Ave.  
Elev. = 1312.58(NAVD88)



FIRE HYDRANTS REQUIRED				
STATION	BURY LINE ELEVATION	TOP OF PIPE ELEVATION	FIRE HYDRANT BURY REQUIRED*	VALVE STEM EXT. REQUIRED (ft)*
18+37.08	1311.54	1307.69	4.5	NA

## LINE 1A



**BAUGHMAN COMPANY**

315 Ellis St.  
Wichita, KS 67211  
316-262-7271  
BaughmanCo.com

Cornejo Industrial District

**Water Line 1A  
STA. 15+70  
to  
STA. 20+90**

Water Line  
Improvements

PROJECT NUMBER:  
448-2021-017262

DESIGN: PSB DRAWN: JA

DATE: Oct. 26, 2021

SHEET OF  
**12 26**

File: E:\Projects\Cornejo Industrial District\_20-11-P803\Engineering\Phase 1 (only if Multiple Phases)\PPW\CID PPW Peltion.dwg