

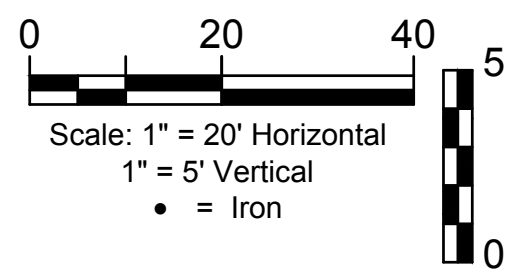
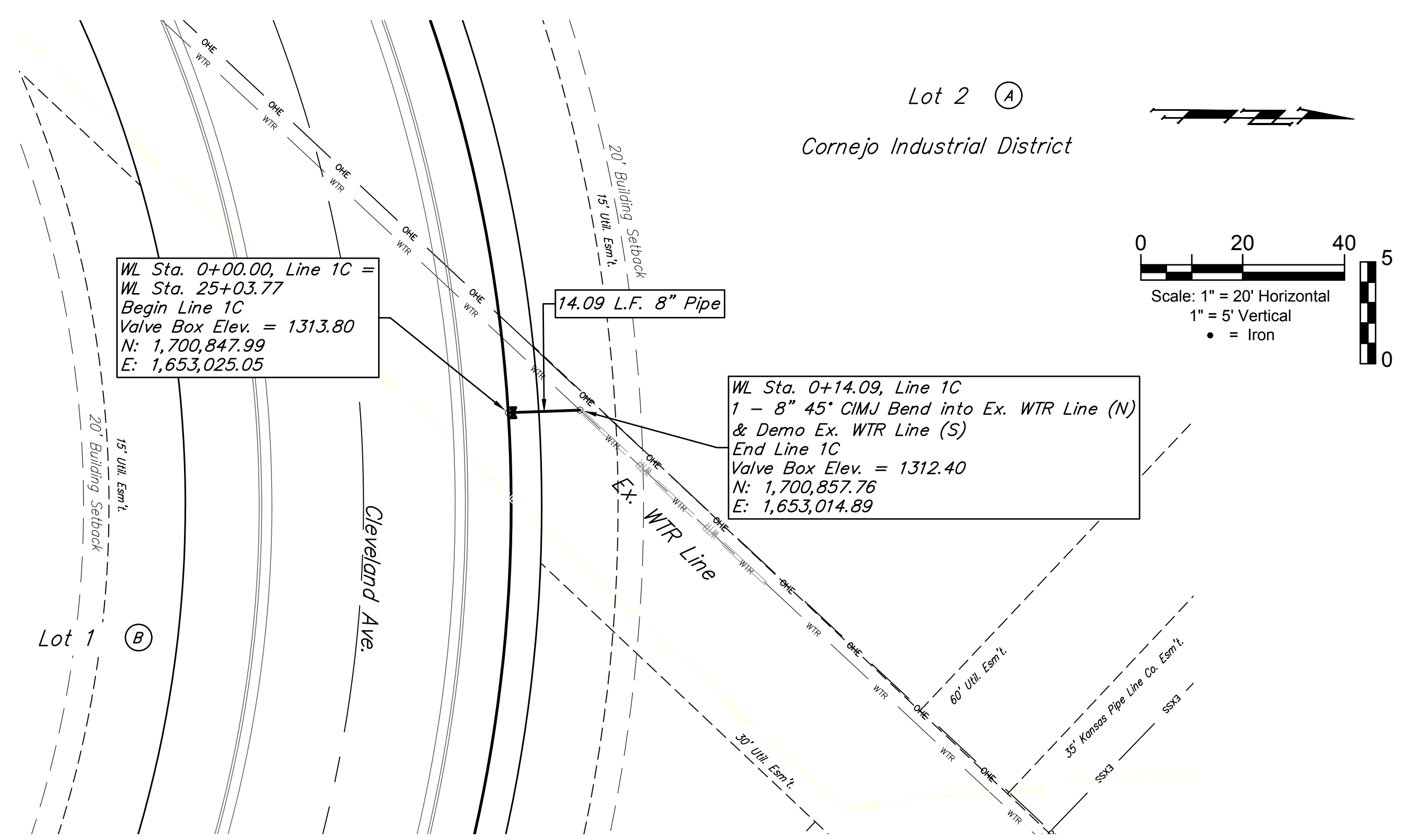
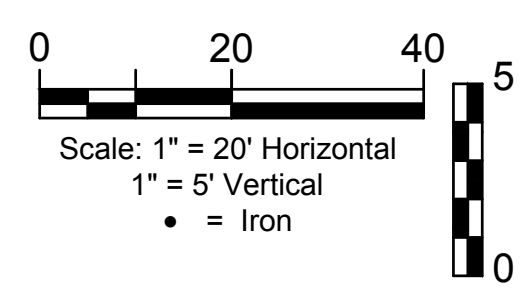
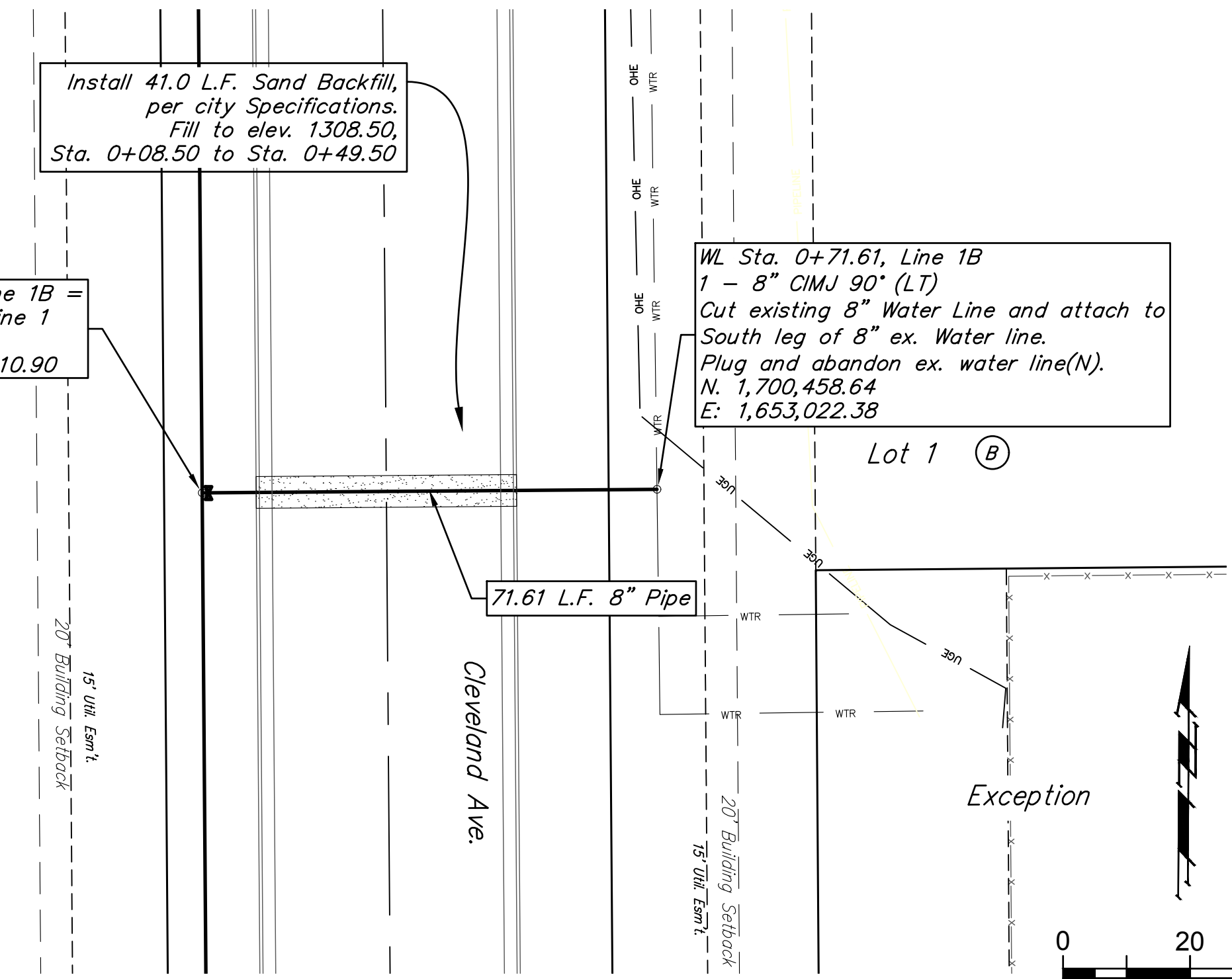
BENCHMARKS

- BM- #1:
Square cut on top of South curb of 21st St. N.
334± West and 32± South of the intersection of
21st St. N. and Cleveland Ave.
Elev. = 1307.56(NAVD88)
- BM- #2:
Square cut on top of South concrete pad of
monitoring well 26± East and 51± South of the
intersection of 21st St. N. and Cleveland Ave.
Elev. = 1308.70(NAVD88)
- BM- #3:
C.O.W BM Disc on top of South concrete wall
918± West and 147± North of the intersection
of 21st St. N. and Cleveland Ave.
Elev. = 1312.58(NAVD88)

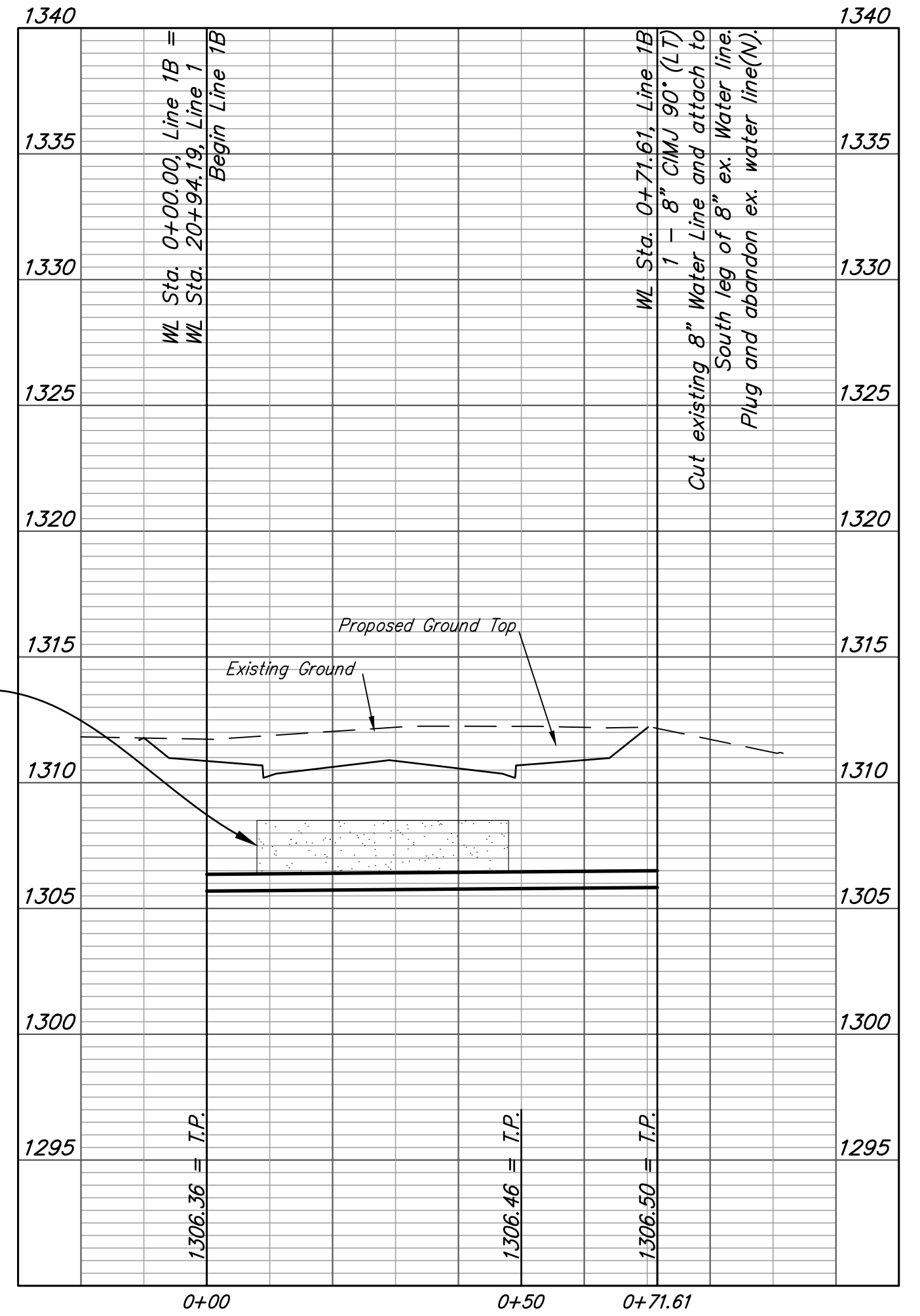
WL Sta. 0+00.00, Line 1B =
WL Sta. 20+94.19, Line 1
Begin Line 1B
Valve Box Elev. = 1310.90

Install 41.0 L.F. Sand Backfill,
per city Specifications.
Fill to elev. 1308.50,
Sta. 0+08.50 to Sta. 0+49.50

WL Sta. 0+71.61, Line 1B
1 - 8" CIMJ 90° (LT)
Cut existing 8" Water Line and attach to
South leg of 8" ex. Water line.
Plug and abandon ex. water line(N).
N: 1,700,458.64
E: 1,653,022.38



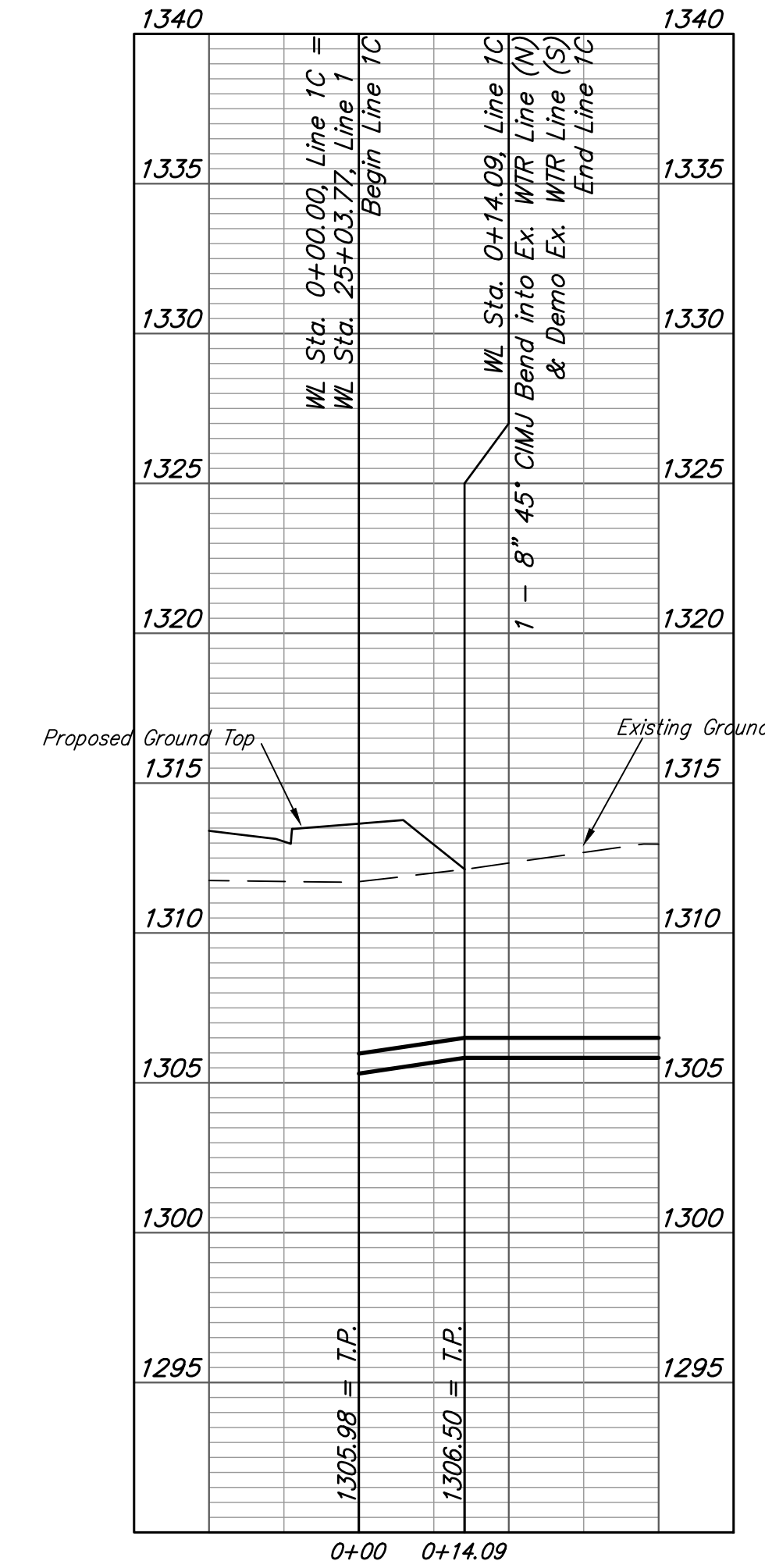
LINE 1B



Install 41.0 L.F. Sand Backfill,
per city Specifications.
Fill to elev. 1308.50,
Sta. 0+08.50 to Sta. 0+49.50

Lines 1B & 1C to be installed
after Line 1 is placed and
tested. Keep existing WTR
Lines active until these lines
are installed.

LINE 1C



Contractor to verify
Depth of EX. WTR
Line to begin Bend

BAUGHMAN COMPANY
315 Ellis St.
Wichita, KS 67211
316-262-7271
BaughmanCo.com

Cornejo Industrial District

Water Line 1B & Water Line 1C

Water Line Improvements

PROJECT NUMBER:
448-2021-017262

DESIGN: PSB DRAWN: JA

DATE: Oct. 26, 2021

SHEET **14** OF **26**

File: E:\Projects\Cornejo Industrial District_20-11-P603\Engineering\Phase 1 (only if Multiple Phases)\PPW\CID FPW\Felton.dwg