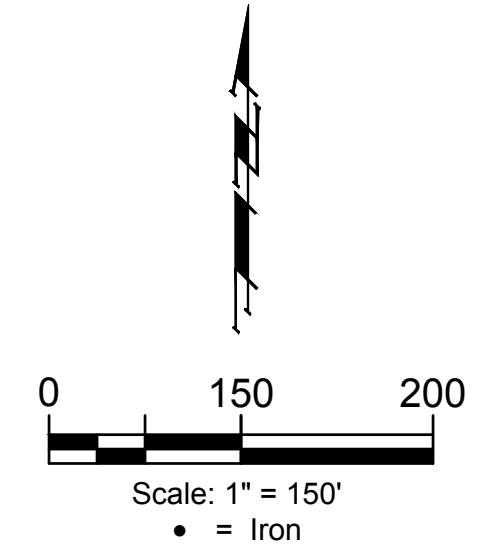
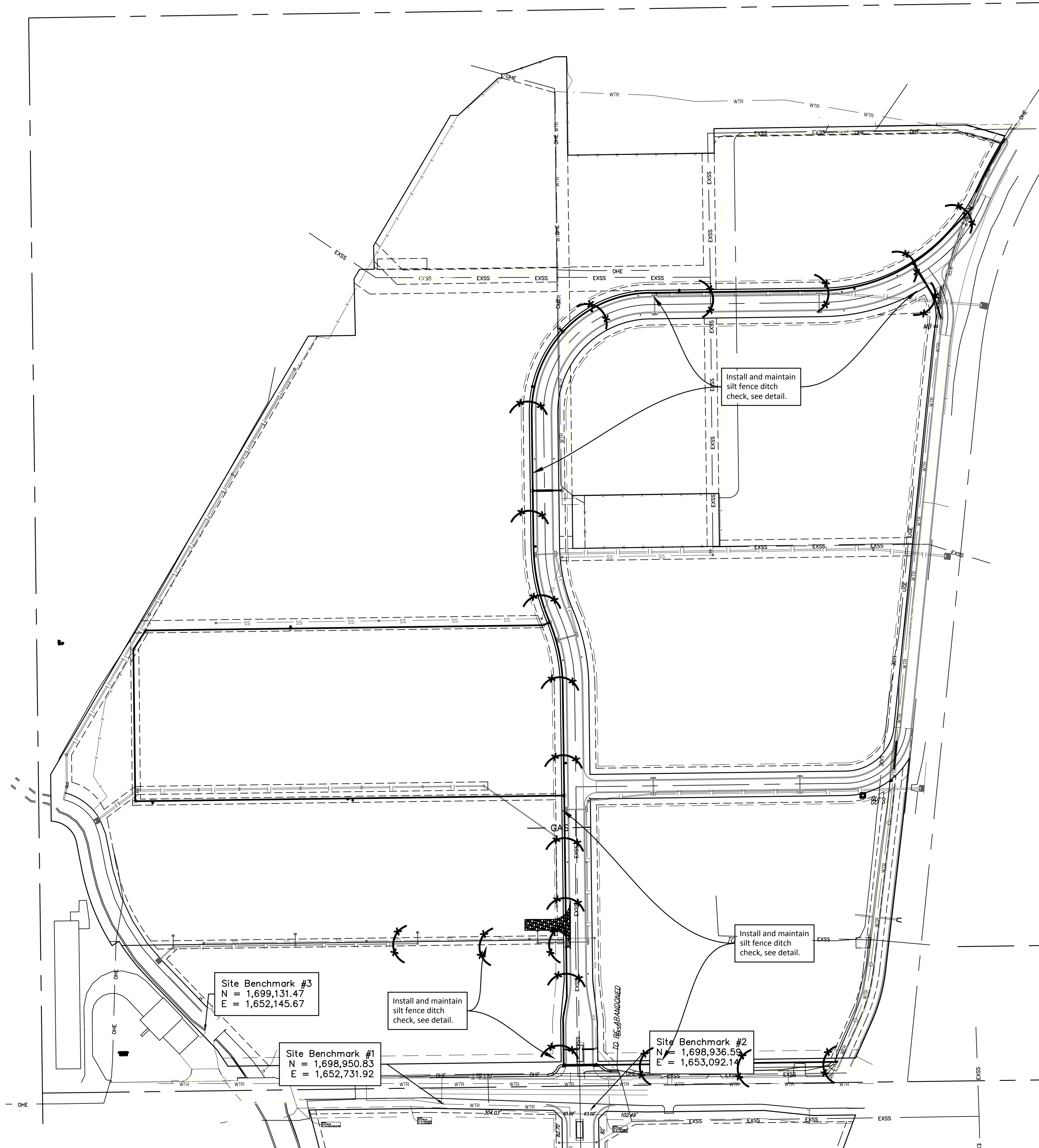


BENCHMARKS

BM- #1:
 Square cut on top of South curb of 21st St. N.
 334'± West and 32'± South of the intersection of
 21st St. N. and Cleveland Ave.
 Elev. = 1307.56(NAVD88)

BM- #2:
 Square cut on top of South concrete pad of
 monitoring well 26'± East and 51'± South of the
 intersection of 21st St. N. and Cleveland Ave.
 Elev. = 1308.70(NAVD88)

BM- #3:
 C.O.W BM Disc on top of South concrete wall
 918'± West and 147'± North of the intersection
 of 21st St. N. and Cleveland Ave.
 Elev. = 1312.58(NAVD88)



- NOTES:**
1. Contractor shall make sure all erosion control is in place before project is accepted. This plan represents the minimum standard. Any additional erosion control measures shall be installed by the Contractor as needed.
 2. All areas disturbed during construction shall be seeded, mulched, and fertilized as per Cover Sheet General Notes.

GENERAL DESCRIPTION

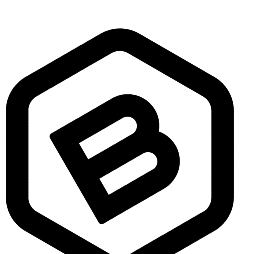
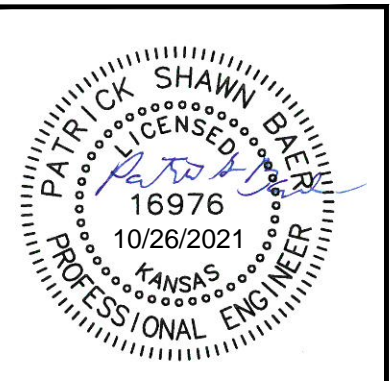
Block A, Cornejo Industrial District

PERFORMANCE INFORMATION

Site Area:	2,073,326 sq. ft. (±47.60 acres)
Disturbed Area:	541,750 sq. ft. (±12.44 acres)
Disturbed Area, pre-const:	0 sq. ft. (±0.00 acres)
Disturbed Area, post-const:	180,000 sq. ft. (±4.13 acres) Bldg.
	239,054 sq. ft. (±5.49 acres) Pavement
	419,054 sq. ft. (±9.62 acres) Total
Design Provided:	110 total stalls (includes 8 ADA Stalls)

ADDITIONAL BENCHMARKS

#1:



BAUGHMAN COMPANY

315 Ellis St.
 Wichita, KS 67211
 316-262-7271
 BaughmanCo.com

Cornejo Industrial District

Erosion Control Plan

Water Line Improvements

PROJECT NUMBER:
 448-2021-017262

DESIGN: PSB DRAWN: JA
 DATE: Oct. 26, 2021

SHEET OF
20 26