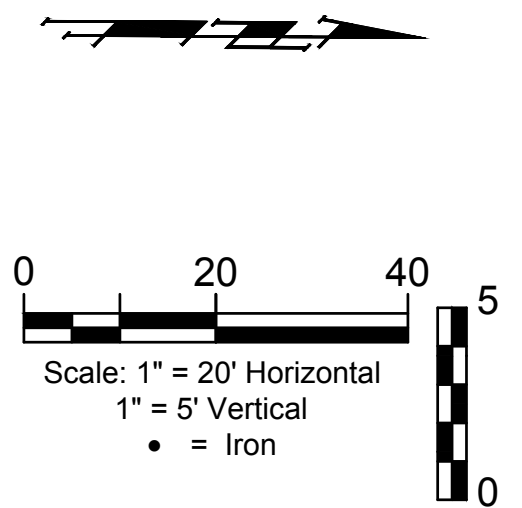
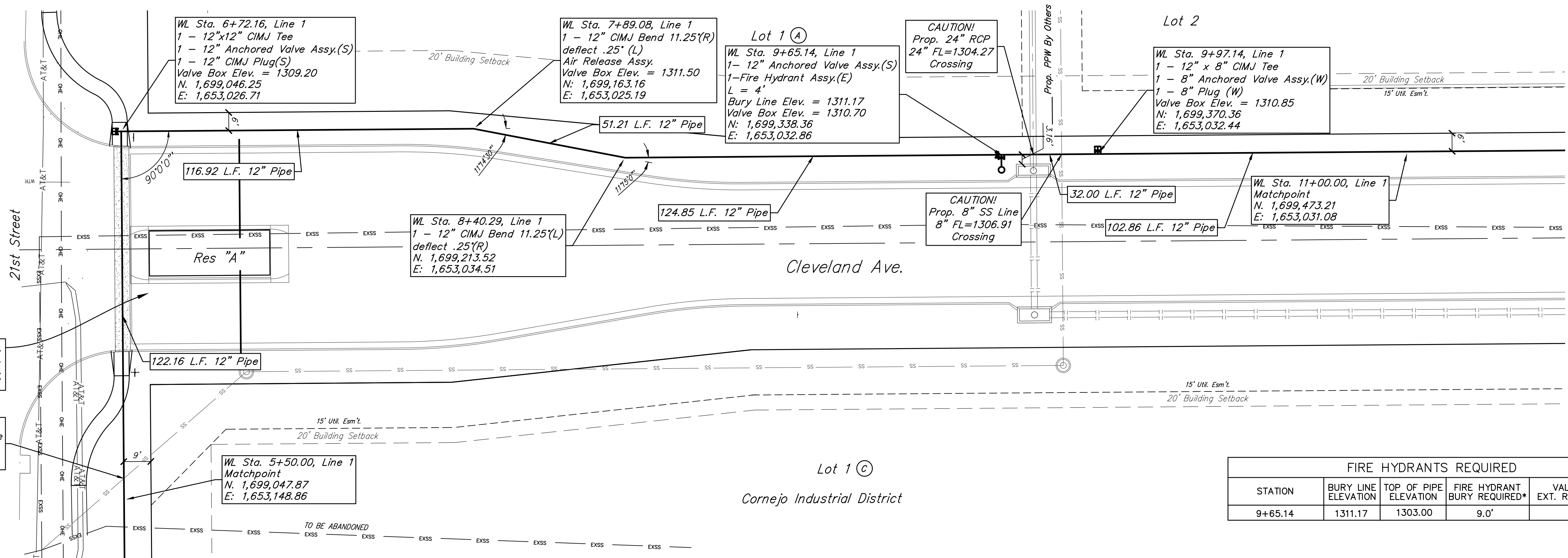


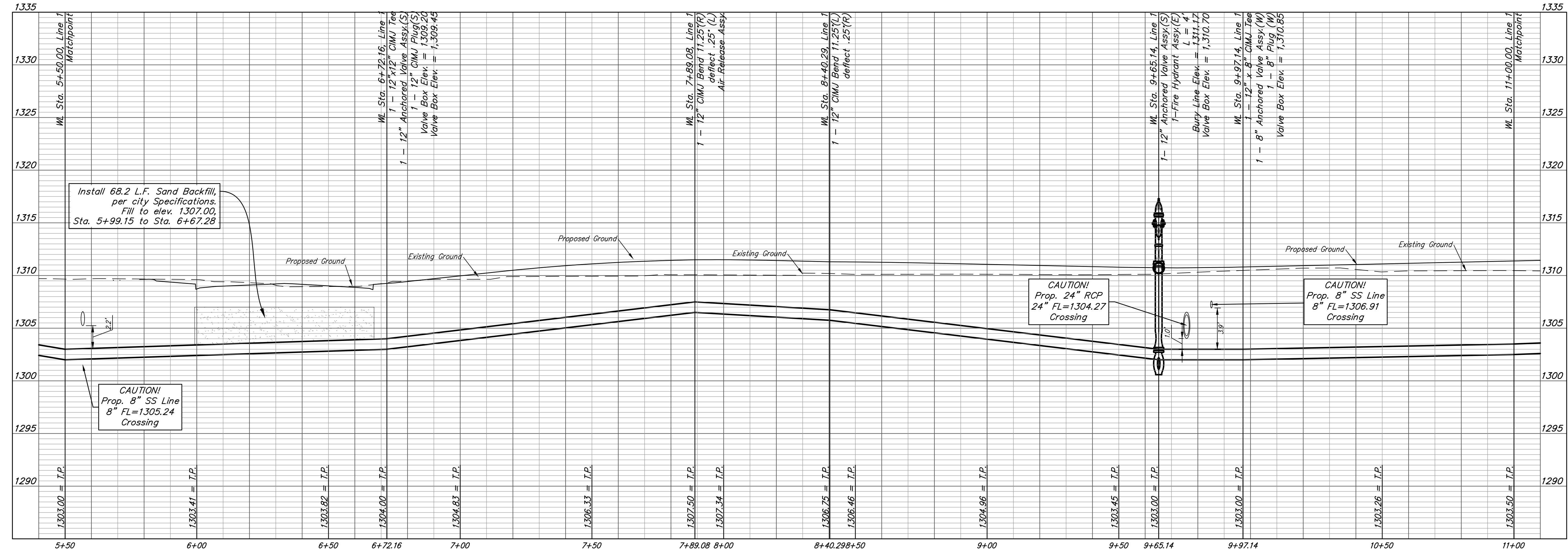
# BENCHMARKS

- BM- #1:  
Square cut on top of South curb of 21st St. N.  
334± West and 32± South of the intersection of  
21st St. N. and Cleveland Ave.  
Elev. = 1307.56(NAVD88)
- BM- #2:  
Square cut on top of South concrete pad of  
monitoring well 26± East and 51± South of the  
intersection of 21st St. N. and Cleveland Ave.  
Elev. = 1308.70(NAVD88)
- BM- #3:  
C.O.W BM Disc on top of South concrete wall  
918± West and 147± North of the intersection  
of 21st St. N. and Cleveland Ave.  
Elev. = 1312.58(NAVD88)



FIRE HYDRANTS REQUIRED				
STATION	BURY LINE ELEVATION	TOP OF PIPE ELEVATION	FIRE HYDRANT BURY REQUIRED*	VALVE STEM EXT. REQUIRED (ft)*
9+65.14	1311.17	1303.00	9.0'	5.0'

## LINE 1



**BAUGHMAN COMPANY**

315 Ellis St.  
Wichita, KS 67211  
316-262-7271  
BaughmanCo.com

Cornejo Industrial District

**Water Line 1  
Sta. 5+50  
to  
Sta. 11+00**

Water Line Improvements

PROJECT NUMBER:  
448-2021-017262

DESIGN: PSB DRAWN: JA

DATE: Oct. 26, 2021

SHEET **3** OF **26**

File: E:\Projects\Cornejo Industrial District\_20-11-P803\Engineering\Phase 1 (only if Multiple Phases)\PPW\CID PPW\Felton.dwg