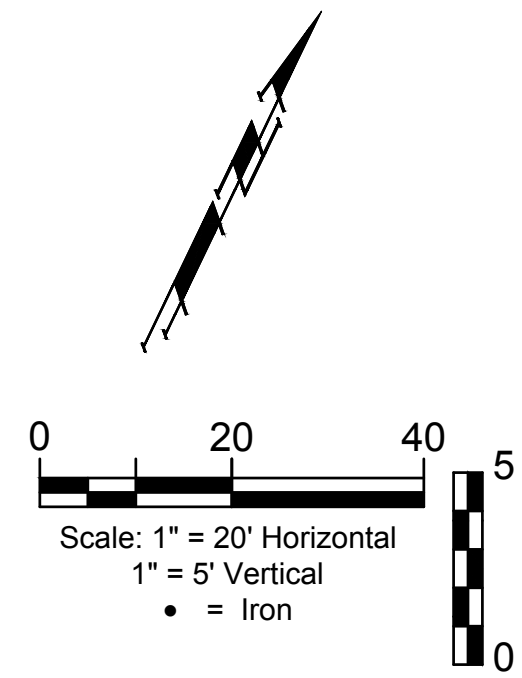


# BENCHMARKS

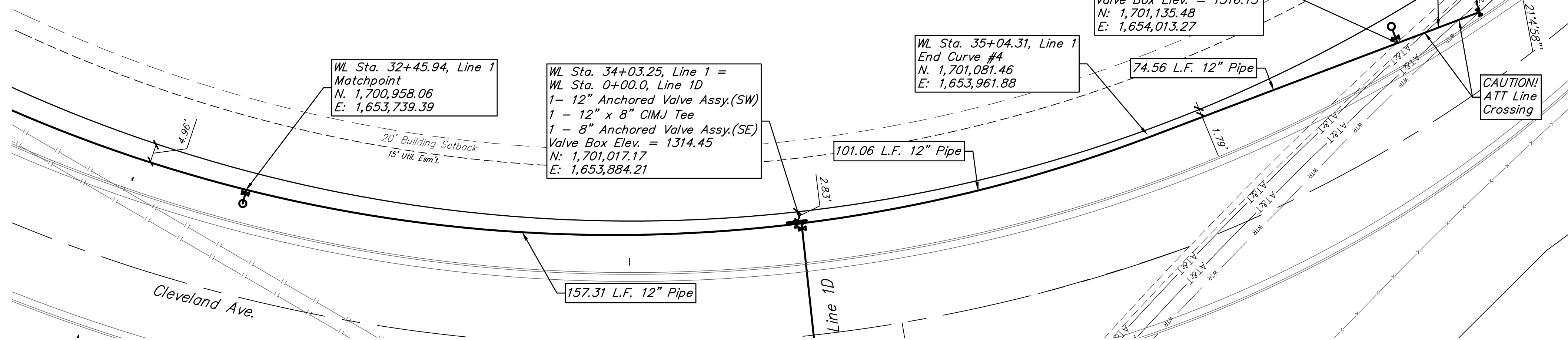
BM- #1:  
Square cut on top of South curb of 21st St. N.  
334'± West and 32'± South of the intersection  
of 21st St. N. and Cleveland Ave.  
Elev. = 1307.56(NAVD88)

BM- #2:  
Square cut on top of South concrete pad of  
monitoring well 26'± East and 51'± South of the  
intersection of 21st St. N. and Cleveland Ave.  
Elev. = 1308.70(NAVD88)

BM- #3:  
C.O.W BM Disc on top of South concrete wall  
918'± West and 147'± North of the intersection  
of 21st St. N. and Cleveland Ave.  
Elev. = 1312.58(NAVD88)



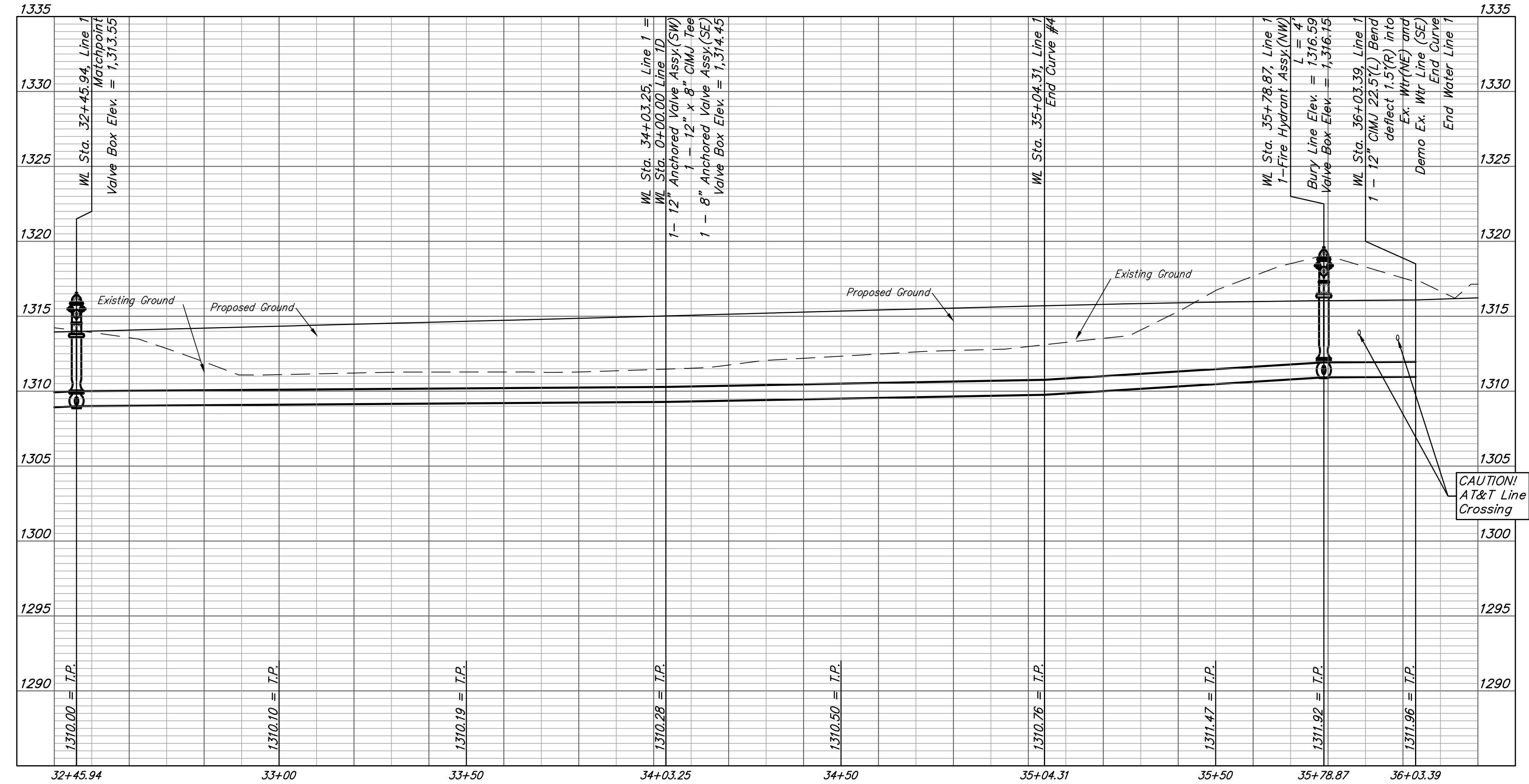
Lot 2 (A)  
Cornejo Industrial District



FIRE HYDRANTS REQUIRED				
STATION	BURY LINE ELEVATION	TOP OF PIPE ELEVATION	FIRE HYDRANT BURY REQUIRED*	VALVE STEM EXT. REQUIRED (ft)*
35+78.87	1316.59	1311.92	5.5'	3'

Curve #4					
Curve Data Based on Centerline of Pipe					
Rad. = 425.0578' Delta = 45°32'12" Tangent = 178.40'					
Arc = 328.41' L.C. = 329.00' Def./Ft. = 4.15974 Min.					
Station	Arc	Chord Lengths 8' Left	Chord Lengths 8' Right	Defl.	Total Defl.
31+75.90	-	-	-	0'00"00"	0'00"00"
32+00.00	24.10'	24.32'	25.25'	1'40"15"	1'40"15"
32+25.00	25.00'	25.23'	26.20'	1'44"00"	3'24"15"
32+50.00	25.00'	25.23'	26.20'	1'43'59"	5'08"14"
32+75.00	25.00'	25.23'	26.20'	1'44"00"	6'52"14"
33+00.00	25.00'	25.23'	26.20'	1'43'59"	8'36"13"
33+25.00	25.00'	25.23'	26.20'	1'44"00"	10'20"13"
33+50.00	25.00'	25.23'	26.20'	1'44"00"	12'04"13"
33+75.00	25.00'	25.23'	26.20'	1'43'59"	13'48"12"
34+00.00	25.00'	25.23'	26.20'	1'44"00"	15'32"12"
34+25.00	25.00'	25.23'	26.20'	1'43'59"	17'16"11"
34+50.00	25.00'	25.23'	26.20'	1'44"00"	19'00"11"
34+75.00	25.00'	25.23'	26.20'	1'44"00"	20'44"11"
35+00.00	25.00'	25.23'	26.20'	1'43'59"	22'28"10"
35+04.31	4.31'	4.35'	4.52'	0'17"56"	22'46"06"

## LINE 1



DEPTH UNKNOWN  
Contractor to Verify  
Depth & Location of  
AT&T Lines Prior to  
Construction.

CAUTION!  
AT&T Line  
Crossing



**BAUGHMAN COMPANY**

315 Ellis St.  
Wichita, KS 67211  
316-262-7271  
BaughmanCo.com

Cornejo Industrial District

**Water Line 1  
Sta. 32+40  
to  
Sta. 36+03**

Water Line  
Improvements

PROJECT NUMBER:  
448-2021-017262

DESIGN: PSB DRAWN: JA

DATE: Oct. 26, 2021

SHEET **8** OF **26**

File: E:\Projects\Cornejo Industrial District\_20-11-P803\Engineering\Phase 1 (only if Multiple Phases)\PPW\CID PPW Peltion.dwg