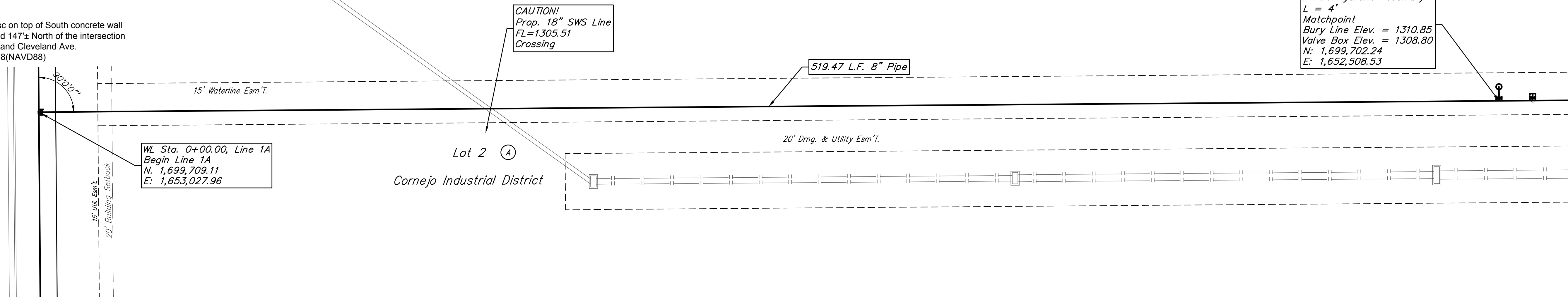


BENCHMARKS

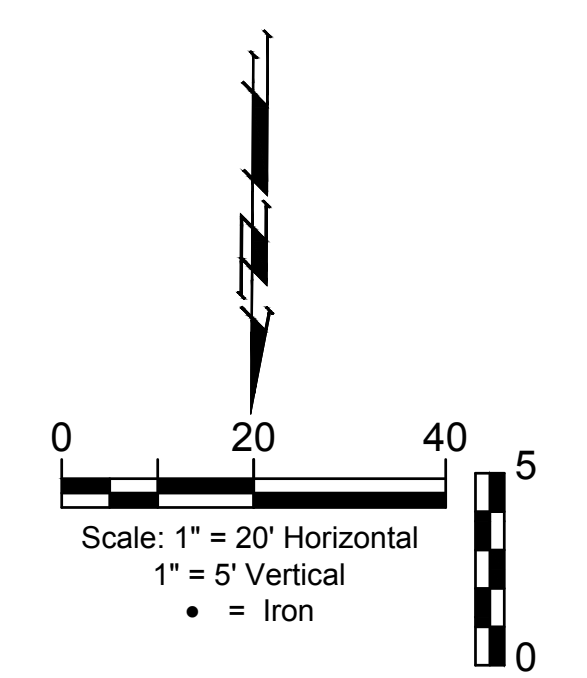
BM- #1:
Square cut on top of South curb of 21st St. N.
334± West and 32± South of the intersection of
21st St. N. and Cleveland Ave.
Elev. = 1307.56(NAVD88)

BM- #2:
Square cut on top of South concrete pad of
monitoring well 26± East and 51± South of the
intersection of 21st St. N. and Cleveland Ave.
Elev. = 1308.70(NAVD88)

BM- #3:
C.O.W BM Disc on top of South concrete wall
918± West and 147± North of the intersection
of 21st St. N. and Cleveland Ave.
Elev. = 1312.58(NAVD88)

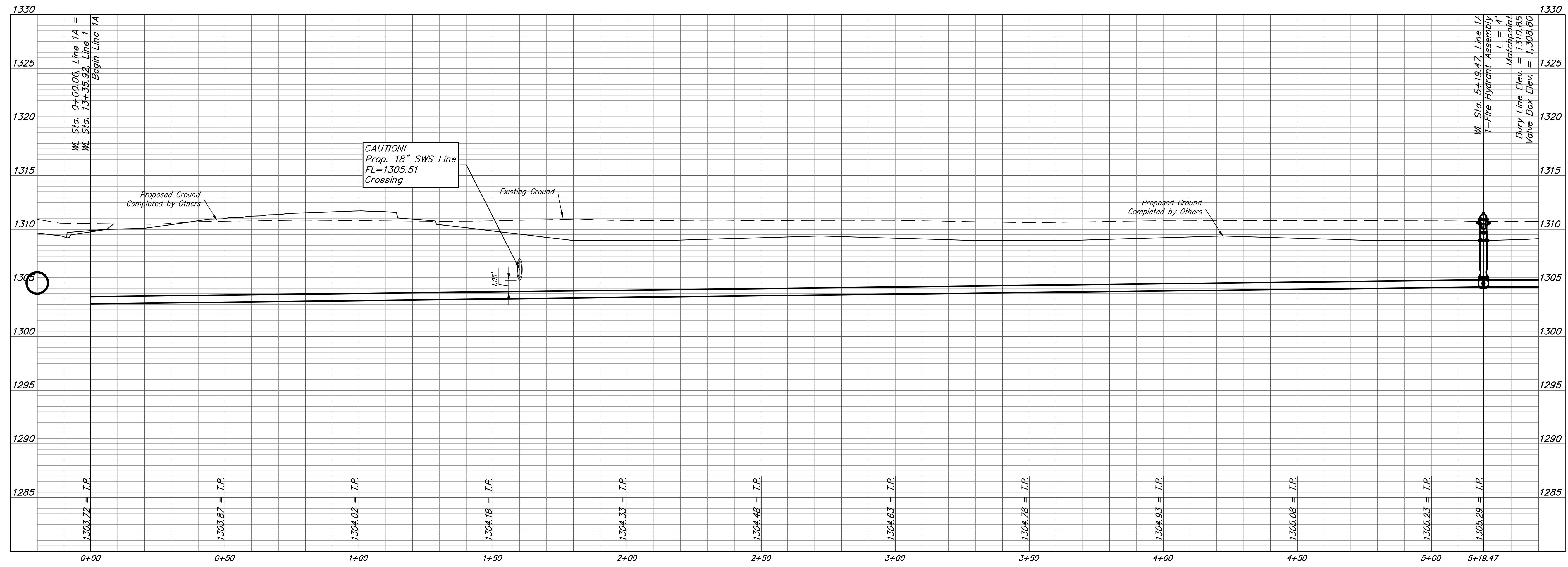


WL Sta. 5+19.47, Line 1A
1-Fire Hydrant Assembly
L = 4'
Matchpoint
Bury Line Elev. = 1310.85
Valve Box Elev. = 1308.80
N: 1,699,702.24
E: 1,652,508.53



FIRE HYDRANTS REQUIRED				
STATION	BURY LINE ELEVATION	TOP OF PIPE ELEVATION	FIRE HYDRANT BURY REQUIRED*	VALVE STEM EXT. REQUIRED (ft)*
5+19.47	1310.85	1305.00	6.5'	3'

LINE 1A



BAUGHMAN COMPANY

315 Ellis St.
Wichita, KS 67211
316-262-7271
BaughmanCo.com

Cornejo Industrial District

Water Line 1A
Sta. 0+00
to
Sta. 5+19

Water Line Improvements

PROJECT NUMBER:
448-2021-017262

DESIGN: PSB DRAWN: JA

DATE: Oct. 26, 2021

SHEET **9** OF **26**

File: E:\Projects\Cornejo Industrial District_20-11-P803\Engineering\Phase 1 (only if Multiple Phases)\PPW\CID PPW Petition.dwg