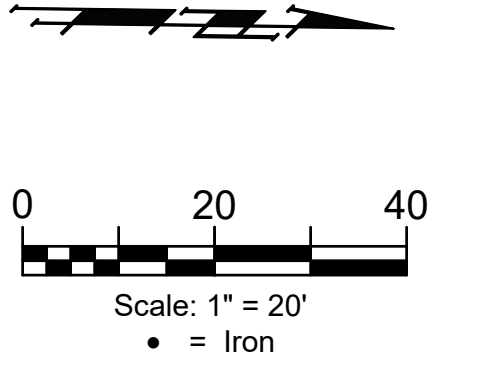
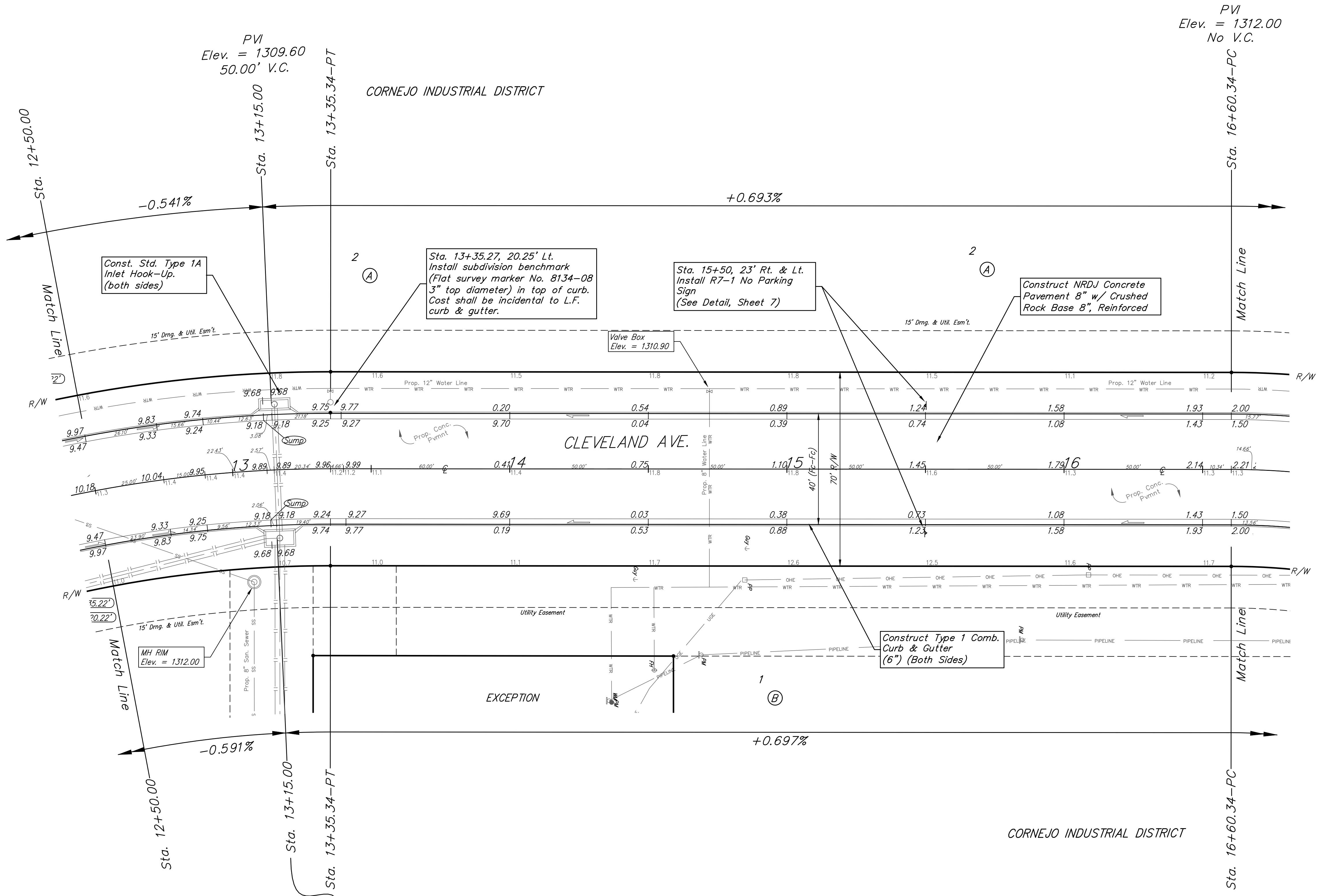


**BENCHMARKS:**  
 Square Cut On Top of South Curb of 21st St. N.  
 33'± West and 32'± South of the Intersection of 21st St. N. and Cleveland Ave.  
 Elev. = 1307.56(NAVD88)

Square Cut On Top of South Concrete Pad of Monitoring Well 26'± East and 51'± South of The Intersection of 21st St. N. and Cleveland Ave.  
 Elev. = 1308.70(NAVD88)



**Benchmarks**

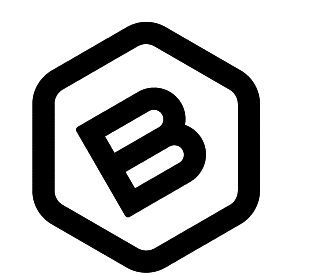
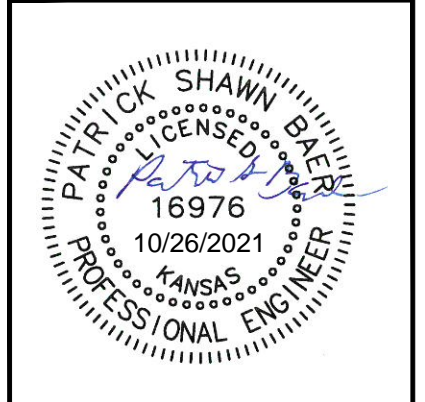
Street & Station	Location Description	Elevation
Cleveland Ave. 3+43.00, 20.25' Lt.	Adjacent to Fire Hydrant Near the Northeast Corner of Lot 1, Blk A	
Cleveland Ave. 7+93.46, 20.25' Lt.	Adjacent to Fire Hydrant West of the Intersection of Cleveland & New York, Near Lot 2, Blk A	
Cleveland Ave. 13+35.27, 20.25' Lt.	Adjacent to Fire Hydrant on the West side of Cleveland Near Lot 8, Blk 1 of North Industrial Park 4th Add.	
Cleveland Ave. 19+39.35, 20.25' Lt.	Adjacent to Fire Hydrant Near the Northwest Corner of Lot 1, Blk B	
Cleveland Ave. 25+83.53, 20.25' Lt.	Adjacent to Fire Hydrant 200' West of the Intersection of Cleveland & New York, Near the NE Corner of Lot 2, Blk A	
Cleveland Ave. 29+41.29, 17.55' Lt.	Adjacent to Fire Hydrant 200' Southeast of the Northeast Corner of Lot 2, Blk A	

PVI  
 Elev. = 1309.60  
 50.00' V.C.

PVI  
 Elev. = 1312.00  
 No V.C.

PVI  
 Elev. = 1312.00  
 No V.C.

Type 1 curb & gutter to be constructed on the pavement on this sheet. Top of curb elevation are given for Type 1 curb.



**BAUGHMAN COMPANY**  
 315 Ellis St.  
 Wichita, KS 67211  
 316-262-7271  
 BaughmanCo.com

CORNEJO INDUSTRIAL DISTRICT

**CLEVELAND**

Sta. 12+50.00 to 16+60.34  
 Street Paving Improvements

PROJECT NUMBER:  
 472-2021-085726

DESIGN: PSB DRAWN: HJW  
 DATE: Oct. 26, 2021

SHEET 13 OF 62

File: E:\Projects\Cornejo Industrial District\_20-11-P603\Engineering\Phase 1 (only if Multiple Phases)\STR Plans\STR.dwg