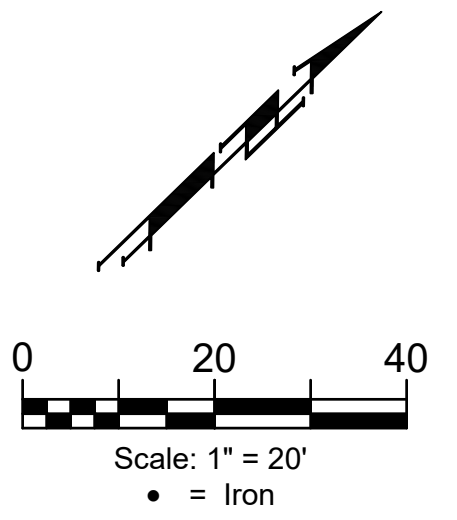


BENCHMARKS:
 Square Cut On Top of South Curb
 of 21st St. N.
 33'± West and 32'± South of the
 Intersection of 21st St. N. and
 Cleveland Ave.
 Elev. = 1307.56(NAVD88)

Square Cut On Top of South
 Concrete Pad of Monitoring Well
 26'± East and 51'± South of The
 Intersection of 21st St. N. and
 Cleveland Ave.
 Elev. = 1308.70(NAVD88)

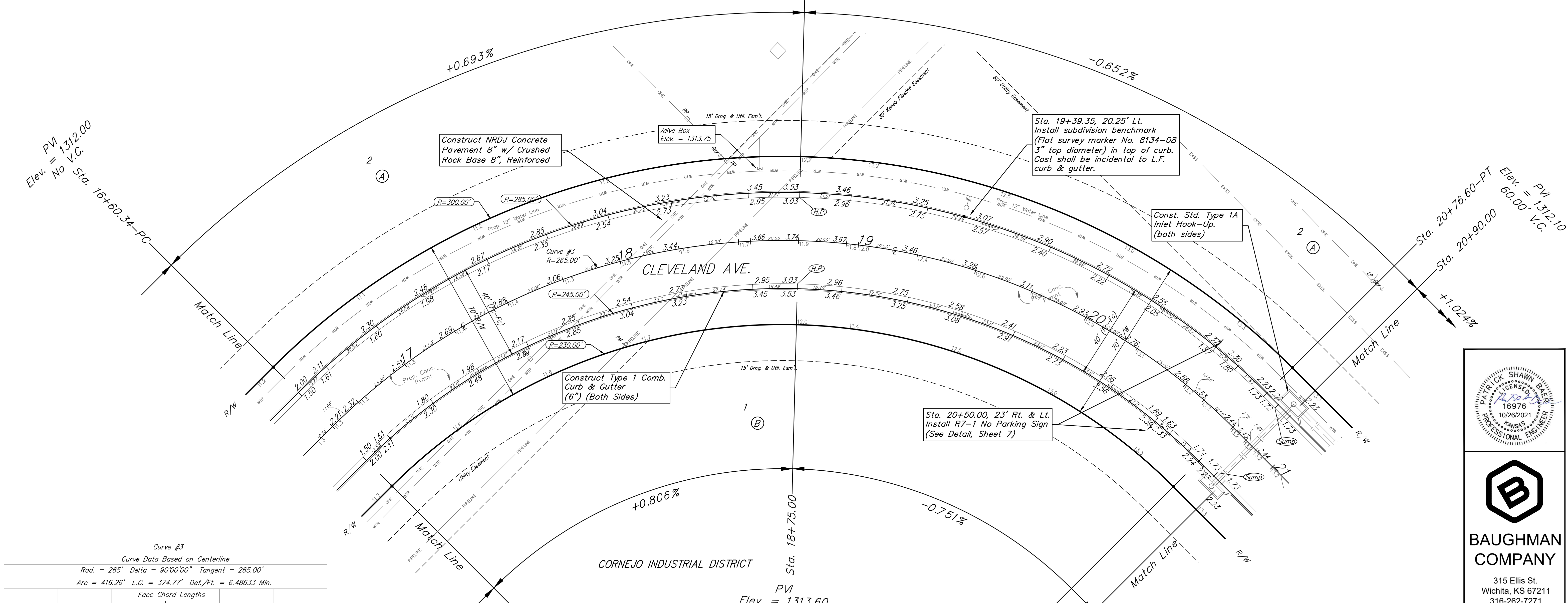
CORNEJO INDUSTRIAL DISTRICT

CORNEJO INDUSTRIAL DISTRICT



PVI = 1312.00
 Elev. No V.C. Sta. 16+60.34-PC

PVI = 1312.10
 Elev. 60.00' V.C. Sta. 20+76.60-PT
 Sta. 20+90.00



Curve #3
 Curve Data Based on Centerline

Rad. = 265' Delta = 90°00'00" Tangent = 265.00'
 Arc = 416.26' L.C. = 374.77' Def./Ft. = 6.48633 Min.

Station	Arc	Face Chord Lengths			Total Defl.
		8' Left	8' Right	Defl.	
16+60.34	-	-	-	0'00"00"	0'00"00"
16+75.00	14.66'	16.21'	13.11'	1'35"05"	1'35"05"
17+00.00	25.00'	27.63'	22.35'	2'42"10"	4'17"15"
17+25.00	25.00'	27.63'	22.35'	2'42"09"	6'59"24"
17+50.00	25.00'	27.63'	22.35'	2'42"10"	9'41"34"
17+75.00	25.00'	27.63'	22.35'	2'42"09"	12'23"43"
18+00.00	25.00'	27.63'	22.35'	2'42"10"	15'05"53"
18+25.00	25.00'	27.63'	22.35'	2'42"09"	17'48"02"
18+50.00	25.00'	27.63'	22.35'	2'42"10"	20'30"12"
18+75.00	25.00'	27.63'	22.35'	2'42"09"	23'12"21"
19+00.00	25.00'	27.63'	22.35'	2'42"10"	25'54"31"
19+25.00	25.00'	27.63'	22.35'	2'42"09"	28'36"40"
19+50.00	25.00'	27.63'	22.35'	2'42"10"	31'18'50"
19+75.00	25.00'	27.63'	22.35'	2'42"09"	34'00'59"
20+00.00	25.00'	27.63'	22.35'	2'42"10"	36'43'09"
20+25.00	25.00'	27.63'	22.35'	2'42"09"	39'25'18"
20+50.00	25.00'	27.63'	22.35'	2'42"10"	42'07'28"
20+76.60	26.60'	29.40'	23.78'	2'52"32"	45'00'00"

Type 1 curb & gutter to be constructed on the pavement on this sheet. Top of curb elevation are given for Type 1 curb.



BAUGHMAN COMPANY
 315 Ellis St.
 Wichita, KS 67211
 316-262-7271
 BaughmanCo.com

CORNEJO INDUSTRIAL DISTRICT

CLEVELAND

Sta. 16+60.34 to 20+90.00
 Street Paving Improvements

PROJECT NUMBER:
 472-2021-085726

DESIGN: PSB DRAWN: HJW

DATE: Oct. 26, 2021

SHEET 14 OF 62

File: E:\Projects\Cornejo Industrial District_20-11-P603\Engineering\Phase 1 (only if Multiple Phases)\STR Plans\STR.dwg