

# BENCHMARKS

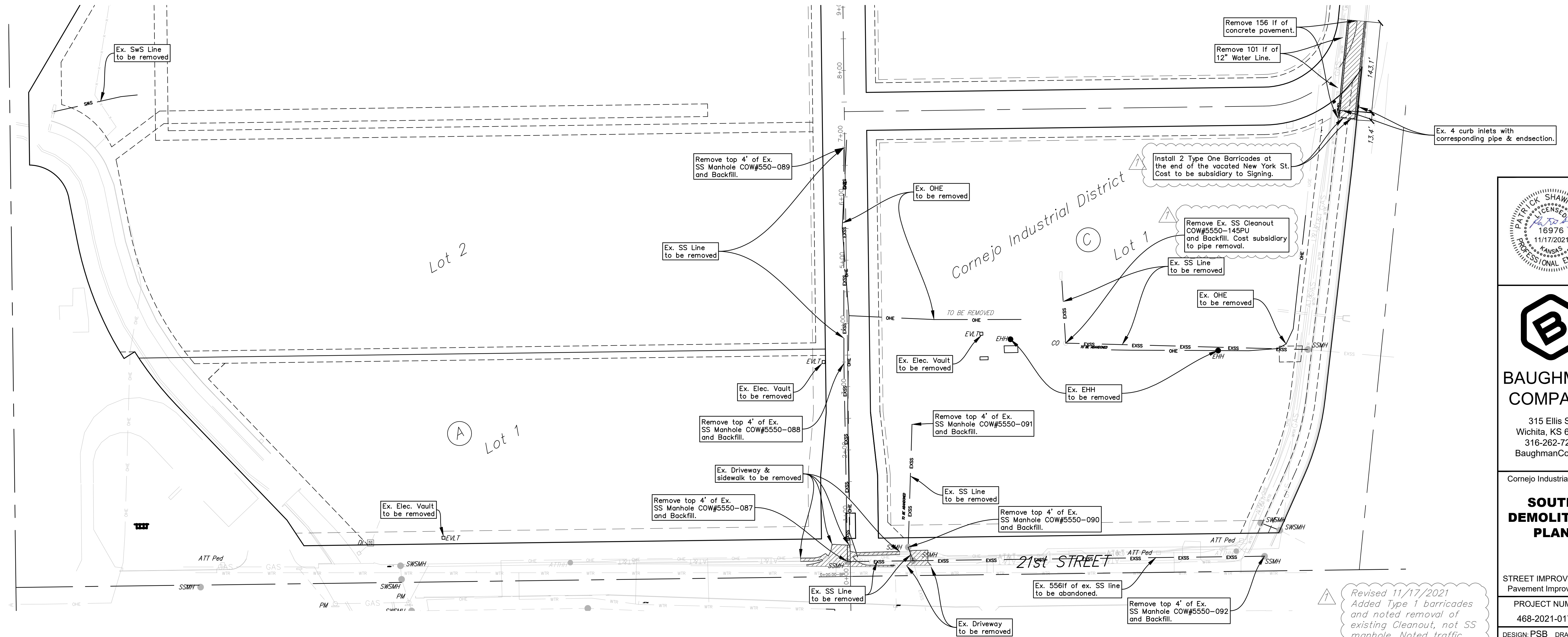
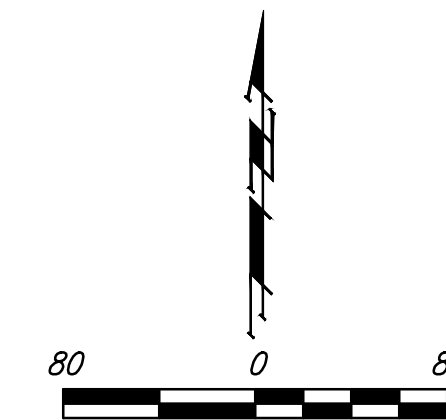
BM- #1:  
Square cut on top of South curb of 21st St. N.  
334'± West and 32'± South of the intersection of  
21st St. N. and Cleveland Ave.  
Elev. = 1307.56(NAVD88)

BM- #2:  
Square cut on top of South concrete pad of  
monitoring well 26'± East and 51'± South of the  
intersection of 21st St. N. and Cleveland Ave.  
Elev. = 1308.70(NAVD88)

BM- #3:  
C.O.W BM Disc on top of South concrete wall  
918'± West and 147'± North of the intersection  
of 21st St. N. and Cleveland Ave.  
Elev. = 1312.58(NAVD88)

# Demolition Notes

- Existing utilities and their locations, as shown on the plans, represent the best information obtainable for design. Location information has been obtained from the various utility companies and is either from company record drawings or company provided field locations. The Contractor will be required to work around existing utilities which do not conflict with proposed construction.
- Traffic affected by construction on this project shall be handled in accordance with the latest edition of the Manual on Uniform Traffic Control Devices (MUTCD).
- The Contractor shall provide appropriate signage throughout the sequence of construction clearly stating where construction entrances are.
- The Contractor shall take all necessary precautions to protect the general public during the construction and demolition process. This may include the use of fences and signage.
- The Contractor shall notify adjacent landowners prior to proceeding with any construction work on landowner's property.
- The Contractor shall stockpile all debris and trash at NE Corner of Lot 1 Block A
- The contractor shall remove all existing private signs and footings located on site as necessary for construction.
- All existing pavement on site shall be removed shall be removed and disposed of in a safe, legal, and responsible manner. Removal shall include base course and sub grade as necessary.
- The Contractor shall coordinate with local utility company on the removal of electric service lines, meters and poles located on site. Contractor shall ensure that all services are located and accounted for before disconnections begin to ensure that adjacent businesses are not affected.
- The Contractor shall coordinate with local gas utility on the removal of gas services and meters located on site. Contractor shall ensure that all services are located and accounted for before disconnections begin to ensure that adjacent businesses are not affected.
- The Contractor shall coordinate with AT&T and any other on-site telecommunications providers on the removal of telecommunications services on site if called for. Contractor shall ensure that all services are located and accounted for before disconnections begin to ensure that adjacent businesses are not affected.
- Asbestos abatement must be conducted by a Kansas-licensed abatement contractor.
- Contractor is to maintain a minimum of one lane of public vehicular access from 21st Street North, through the project, to the north leg of New York. Contractor shall maintain the single access lane of traffic per MUTCD Standards and phase construction to continue this access. Cost to be subsidiary to Traffic Control.



Revised 11/17/2021  
Added Type 1 barricades  
and noted removal of  
existing Cleanout, not SS  
manhole. Noted traffic  
control requirement and to  
be subsidiary to Traffic  
Control

**BAUGHMAN  
COMPANY**

315 Ellis St.  
 Wichita, KS 67211  
 316-262-7271  
 BaughmanCo.com

---

Cornejo Industrial District  
  
**SOUTH  
DEMOLITION  
PLAN**

---

STREET IMPROVEMENTS  
 Pavement Improvements  
 PROJECT NUMBER:  
 468-2021-017265  
 DESIGN: PSB DRAWN: JA  
 DATE: Oct. 26, 2021  
 SHEET **36** OF **62**

File: E:\Projects\Cornejo Industrial District\_20-11-P603\Engineering\Phase 1 (only if Multiple Phases)\CID SWD Petition.dwg