

GENERAL NOTES:

1. Contractor will be required to provide notice to utility companies a minimum of seventy-two (72) hours prior to any excavation, as follows:

Kansas One-Call 687-2470

The Contractor must notify the following in case of an emergency:

- Cox Communications 262-4270
- Kansas Gas Service 1-888-482-4950
- Energy 383-8650
- Aquila Energy 1-800-303-0357
- ATT 268-2245
- City of Wichita Water Dept. 268-4563
- City of Wichita Sewer Maint. 268-4024
- City of Wichita Storm Sewer Maint. 268-4090
- City of Wichita Traffic Maint. 268-4034
- Conoco Phillips Pipeline Co. 1-877-267-2290
- Southern Star Pipeline Co. 529-6600
- Kinder-Morgan Pipeline Co. 1-888-844-5658

2. Utility service lines, poles, valve boxes, meters, and etcetera are to be adjusted as necessary by others prior to construction unless the plans specifically call for their adjustment by the Contractor or unless the plans specifically identify a utility to be adjusted by its owner during construction. Existing utilities and their location, as shown on the plans, represent the best information obtainable for design. The Contractor will be required to work around existing utilities within the right-of-way which do not conflict with proposed construction.

3. Rubble from the removal of miscellaneous structures and excess excavation which is to be wasted shall be disposed of on sites to be provided by the Contractor. These sites shall be approved by the Engineer as to suitability, appearance and site location. Locations, in the opinion of the Engineer, that will leave an unsightly appearance will not be approved. All disposal sites must be approved by the Kansas Department of Health and Environment. Material either stockpiled or disposed of in a flood plain would require a Kansas State Board of Agriculture permit. Any material dumped in waters of the United States or wetlands is subject to U.S. Corps. of Engineers permitting regulations. Any material buried or stockpiled beyond approved construction limits would require additional archaeological investigations unless buried in a previously approved borrow location.

4. Trees and shrubs in public right-of-way which are in direct conflict with proposed new construction shall be removed by the Contractor ONLY with the Developer or Baughman Company approval. Trees and shrubs which are not in direct conflict with proposed new construction shall be saved and protected from damage.

5. The Contractor shall give all property owners and/or tenants of developed property abutting the construction of this project a minimum of ten (10) days notice prior to start of construction.

6. The Contractor shall be responsible for preserving property irons. The Contractor will be required to re-establish any property irons which are damaged or destroyed by his construction operations. Such irons shall be re-established by a licensed Land Surveyor in accordance with state laws.

7. All existing and proposed erosion control measures including silt fencing, erosion control mat, straw bales, inlet barriers, and const. entrance shall be maintained throughout construction by the Contractor until the project is accepted by the City of Wichita. The on-site Engineer shall complete weekly reports on the status of erosion control measures. The Contractor shall be required to comply with maintenance and/or replacement of erosion control measures as determined by the on-site Engineer until project is accepted by City of Wichita.

8. A saw cut of at least one-half the depth of existing surface courses or one-fourth the depth of the existing total pavement thickness shall be provided at locations where proposed construction abuts the existing surface course or pavement for which partial removal of that surface or pavement is required. Sawed joint to facilitate removal within three (3) feet of existing joints will not be permitted and for such instances the limits of removal shall extend to the existing joint. Such saw cuts will not be paid for directly and this cost shall be considered as subsidiary to the removal of the surface or pavement.

9. All areas disturbed during construction shall be seeded as follows:

- Seed -- Kansas Premium Fescue Blend; 8 lbs. PLS/1000 Sq. Ft.
- Annual Rye grass; 3 lbs./1000 Sq. Ft.
- Fertilizer -- 12-24-12 Ratio; 45 Lbs./Ac.
- Mulch -- 2 Tons Prairie Hay/Ac.

All others areas disturbed during construction shall be seeded as follows:

- Seed -- Rye grass (PLS) -- 5 lbs./1,000 Sq Ft.

9. The Contractor shall adjust valve boxes as necessary to match proposed grade. Cost to be included in bid item, "Site Restoration."

10. The Contractor shall drain any standing water in sump areas of the proposed pavement. Contractor shall overexcavate and recompact these areas as required to maintain compaction of 95% Standard Proctor Density. Cost to be incidental to pavement.

11. Limits of earthwork shall match existing ground elevations at the right-of-way line unless otherwise noted on the plans with a new finished grade elevation. When a new finished grade elevation is shown, the earthwork shall extend one foot beyond the right-of-way line and then slope up or down using permissible slopes to match the existing ground surface.

12. All construction equipment, including vehicles, materials, and debris, shall be stored outside of the clear zone. Where this cannot be achieved the contractor shall place appropriate signs, object identifiers, and/or barricades in compliance with the MUTCD.

13. Excess excavation shall remain onsite and be stockpiled or spread on-site at a location determined by the Developer or Design Engineer.

Special Site-Specific Notes:

1. The Developer for this project is R.R.M. Properties, L.L.C., 800 E. 21st St. N., Wichita, KS 67214. Contact Tom Smith at (316) 619-0697 or tom@cornejoindustrial.com.

2. Since 1981, various petroleum hydrocarbon remediation systems (recovery wells, product and seep interceptor trenches, multi-phase extraction) have been in operation to recover petroleum products and dissolved-phase petroleum-impacted groundwater. Currently, the Site is undergoing interim remedial measures (i.e., LNAPL removal and dissolved-phase groundwater extraction/treatment) in accordance with the Final Corrective Action Decision (KDHE BER, 2017) in anticipation of future site remediation and development. The site has been excavated to remove abandoned conduits and foundations. Any additional pipes or conduits, found by the contractor shall be cut, plugged, and abandoned by the Contractor. Cost to be subsidiary to Pipe Removed and Replaced. Any concrete footings or slabs, in excess of 30" will be removed by onsite development contractor.

3. It is anticipated that the contractor may encounter impacted soil, steel piping, concrete structures, pads, footings, and foundations remaining from the refinery operations on the property (the Material). Contractors are to maintain at least One (1) Site Supervisor with minimum 40 hours of OSHA HAZWOPER Training, during all phases of construction. Health and safety protocols will be implemented to protect site workers from potential exposure to soil constituents of concern. It is the contractor's responsibility to determine and designate all appropriate personal protective equipment (PPE) to be worn by its employees and subcontractors.

4. Per KDHE requirements, the Material and all excavated Material shall remain on site. Excess or undesired excavated soil shall be segregated, hauled and stockpiled at locations designated by Developer.

5. The contractor is to coordinate with all utility providers prior to construction adjacent or crossing noted existing utilities. Coordination with utility providers to relocate, remove utilizes prior to construction are ongoing by the Utility Provider, Design Engineer and Developer.

Special Provision:

1. A pre-bid meeting will be held to address proper operating procedures and monitoring for any work and scheduling performed on this site. The contractor will be responsible for conveying all relevant information regarding excavation/grading and/or utility work to the Site workers who will be involved with these activities.

2. A copy of the active KDHE Kansas Water Pollution Control Permit # I-AR94-P078 with the Progress Report: KDHE #86-E145A are provided for information.

Project Earthwork Totals (CY unadjusted)	Excavation		Loose Fill
	Compacted Fill		
Project Total	13,376	290	2,173
Total Project Length			
4,115 L.F. = 0.78 Miles			

Street Paving and Incidental Storm Water Sewer

to serve

CORNEJO INDUSTRIAL DISTRICT

CLEVELAND AVE: From the north line of 21st Street, North to the west line of New York Avenue

NEW YORK AVE: From the east line of Cleveland Avenue, east to the west line of New York Avenue

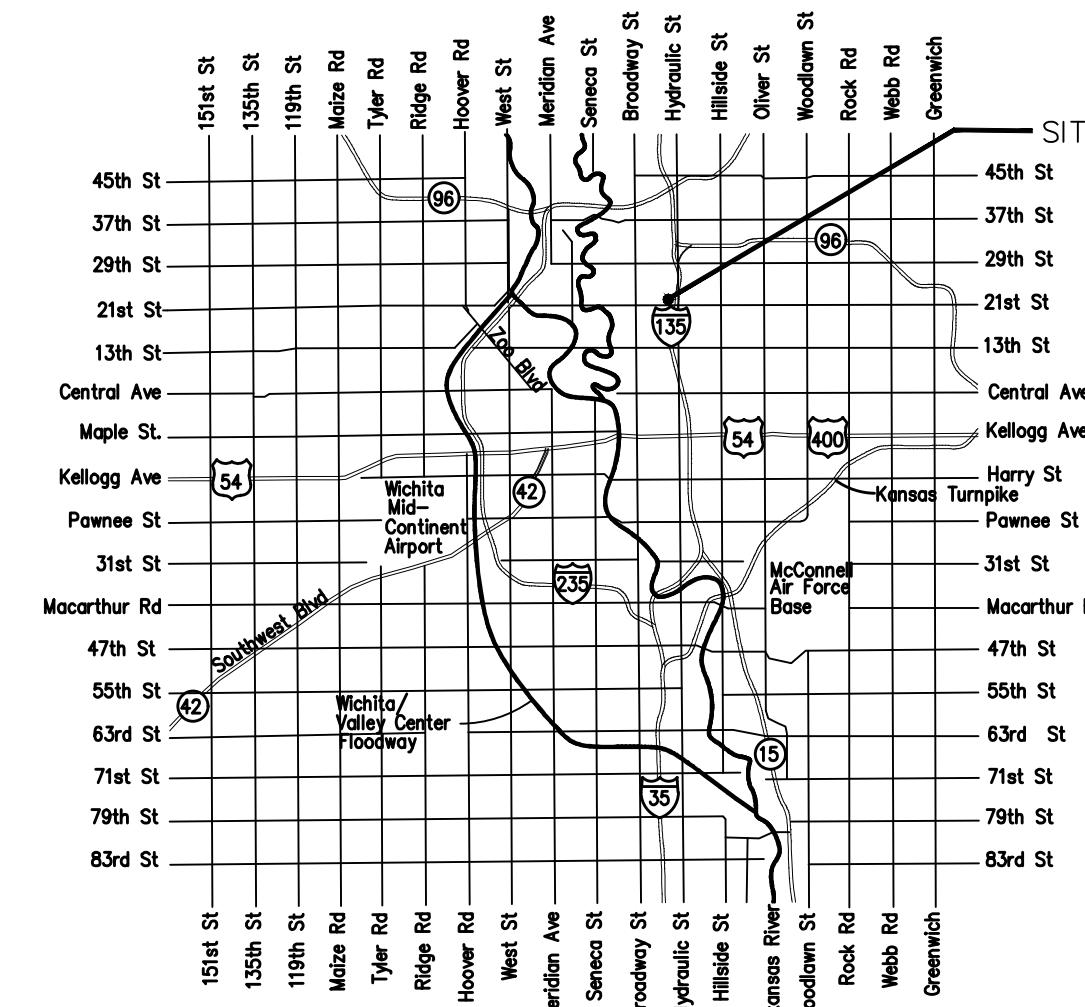
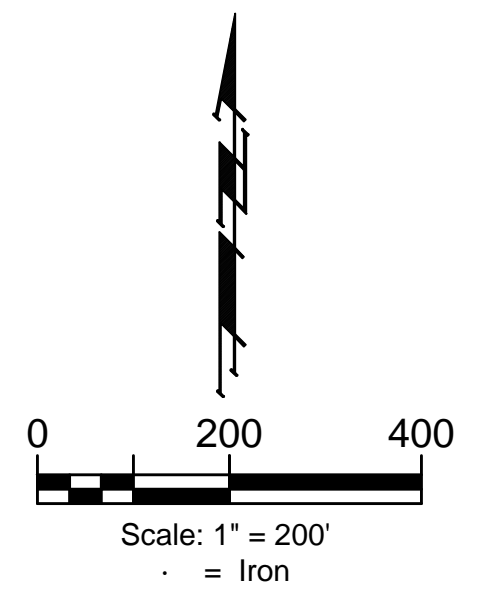
CITY OF WICHITA, KANSAS

Gary Janzen, P.E. City Engineer

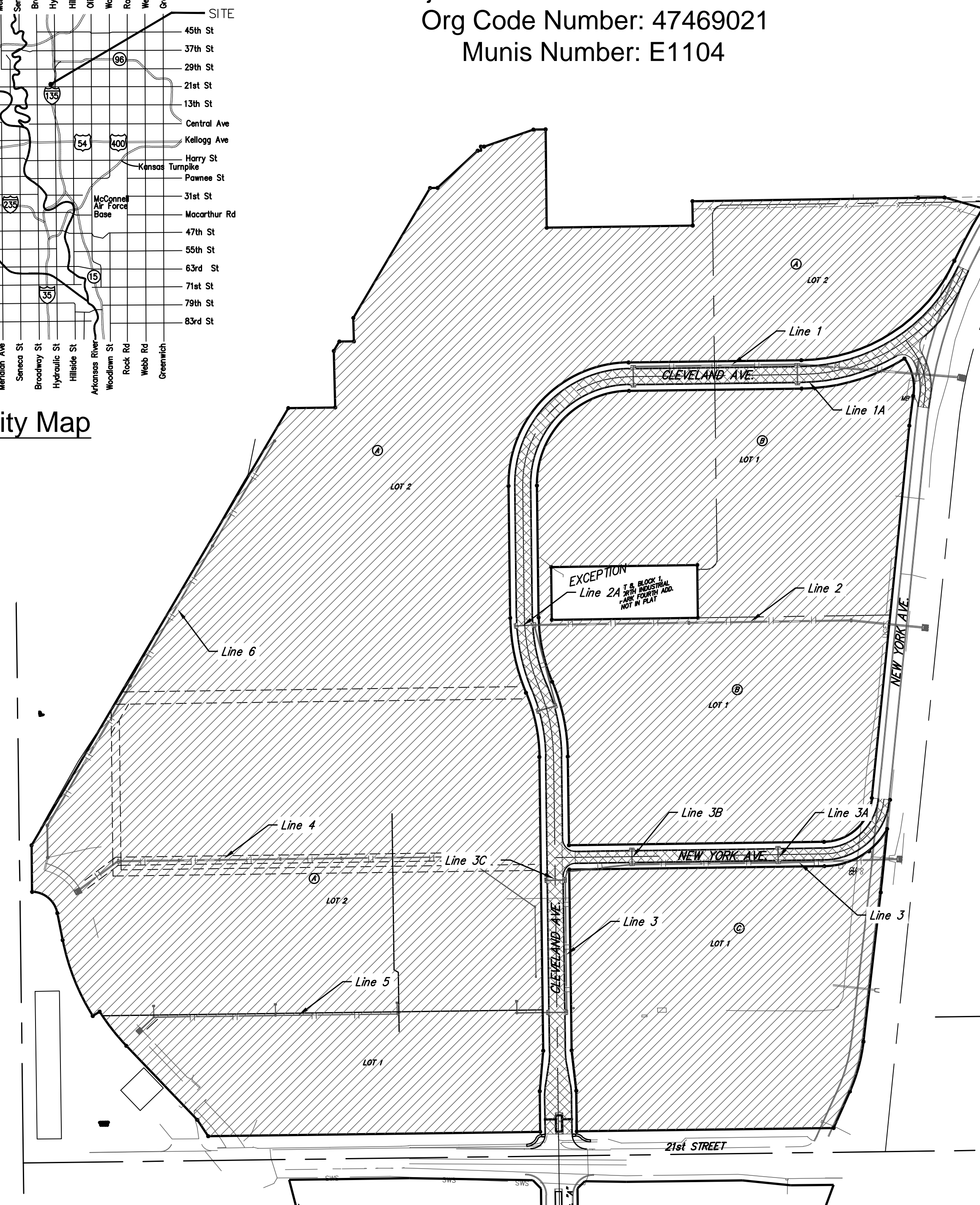
Project Number: 472-2021-085726

Org Code Number: 47469021

Munis Number: E1104



Vicinity Map



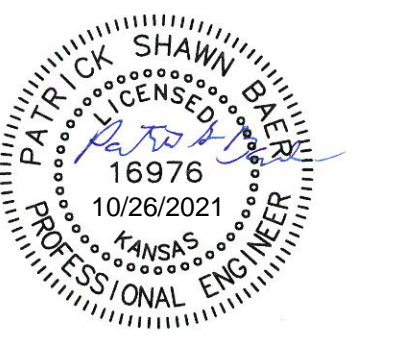
BENCHMARKS

Square Cut On Top of South Curb of 21st St. N. 334'± West and 32'± South of the Intersection of 21st St. N. and Cleveland Ave. Elev. = 1307.56(NAVD88)

Square Cut On Top of South Concrete Pad of Monitoring Well 26'± East and 51'± South of the Intersection of 21st St. N. and Cleveland Ave. Elev. = 1308.70(NAVD88)

SHEET INDEX

Title Sheet	1
Concrete Pavement NRDJ Details	2
Dowel Assemblies Details	3
Asphalt Paving Detail	4
Wheelchair Ramp Details	5
Curb & Gutter Details	6
Sign Details	7
Inlet Underdrain Details	8
Valley Gutter Details	9
Cleveland Avenue	10-16
New York Avenue	17-19
Line 1	20-21
Line 1A	20
Line 2	22-24
Line 2A	23
Line 3	25-27
Line 3A	25
Line 3B	26
Line 3C	27
Line 4	28-29
Line 5	30-31
Line 6	32-34
Erosion Control Plan	35
Demo Plan	36-37
Pavement Marking Plan	38
Traffic Control Detail	39
Erosion Control BMP Details	40-44
Std. Type 1A Curb Inlet Detail	45
Backyard Inlet Detail	46
Drop Inlet Details	47
Modified Drop Inlet Details	48
Precast Concrete Manhole Details	49
Cross Sections	50-56
Coordinate Sheet	60
Copy of Plat	61-62



Benefit District:

Proposed Streets: