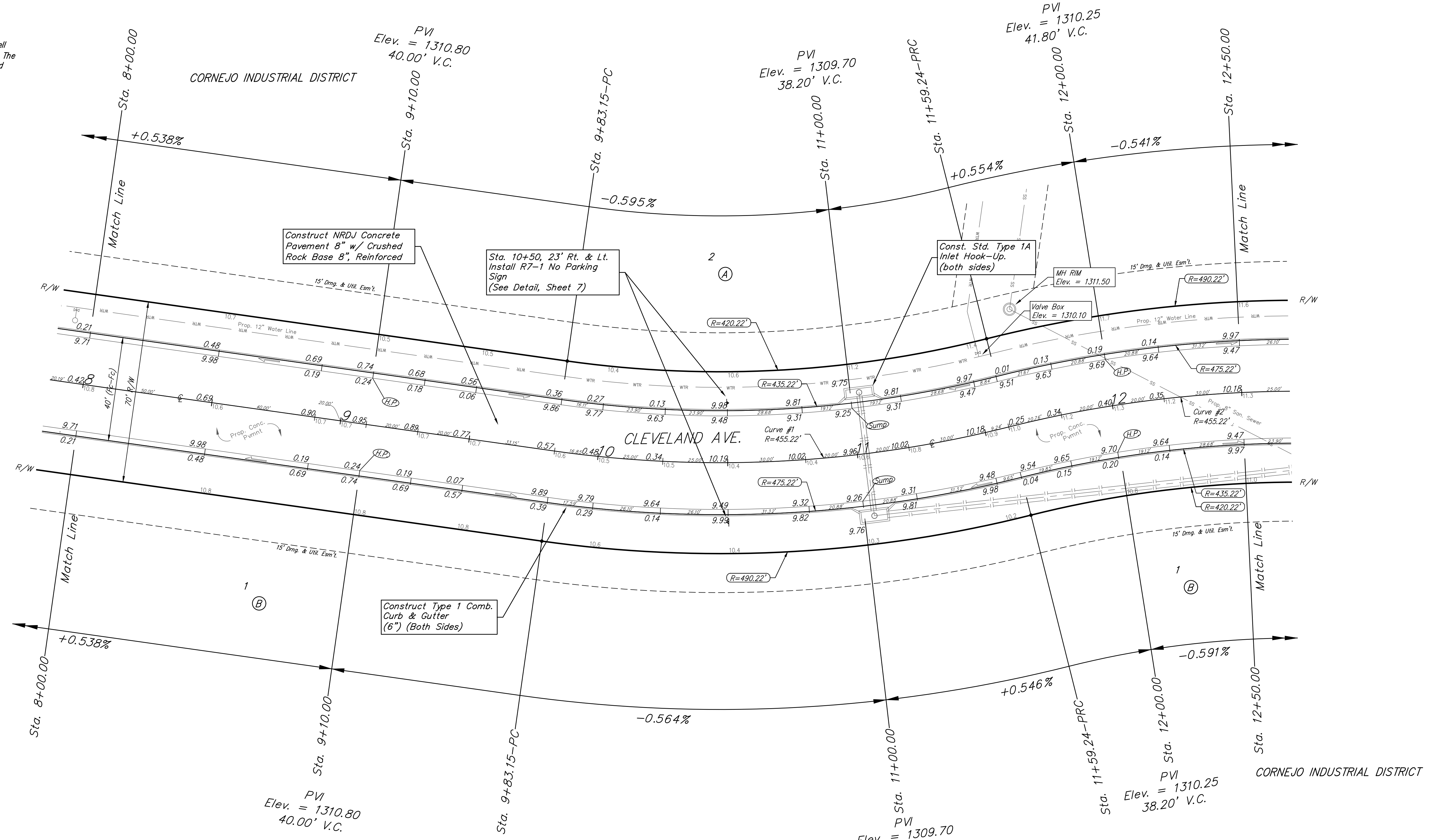
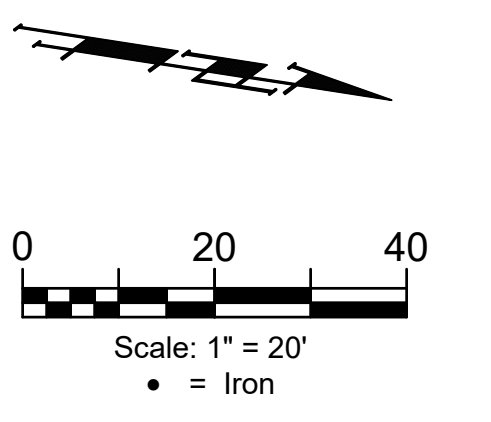


BENCHMARKS:
 Square Cut On Top of South Curb of 21st St. N.
 334'± West and 32'± South of the Intersection of 21st St. N. and Cleveland Ave.
 Elev. = 1307.56(NAVD88)

Square Cut On Top of South Concrete Pad of Monitoring Well 26'± East and 51'± South of The Intersection of 21st St. N. and Cleveland Ave.
 Elev. = 1308.70(NAVD88)



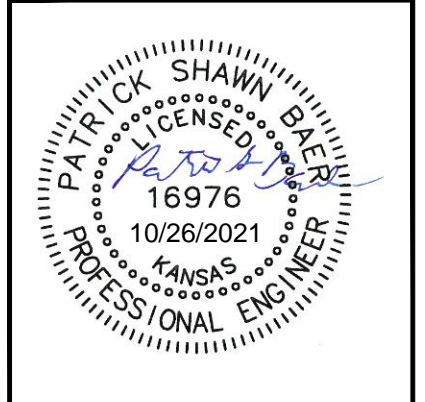
Curve #1
 Curve Data Based on Centerline
 Rad. = 455.22' Delta = 22°09'51" Tangent = 89.16'
 Arc = 176.09' L.C. = 175.00' Def./Ft. = 3.77605 Min.

Station	Face Chord Lengths			
	Arc	8' Left	8' Right	Total Defl.
9+83.15	-	-	-	0'00"00"
10+00.00	16.85'	15.81'	17.89'	1'03'38"
10+25.00	25.00'	23.46'	26.54'	2'38'02"
10+50.00	25.00'	23.46'	26.54'	4'12'26"
10+75.00	25.00'	23.46'	26.54'	5'46'50"
11+00.00	25.00'	23.46'	26.54'	7'21'14"
11+25.00	25.00'	23.46'	26.54'	8'55'38"
11+50.00	25.00'	23.46'	26.54'	10'30'02"
11+59.24	9.24'	8.67'	9.81'	11'04'56"

Curve #2
 Curve Data Based on Centerline
 Rad. = 455.22' Delta = 22°09'51" Tangent = 89.16'
 Arc = 176.10' L.C. = 175.00' Def./Ft. = 3.77584 Min.

Station	Face Chord Lengths			
	Arc	8' Left	8' Right	Total Defl.
11+59.24	-	-	-	0'00"00"
11+75.00	15.76'	16.73'	14.79'	0'59'30"
12+00.00	25.00'	26.53'	23.46'	1'34'24"
12+25.00	25.00'	26.53'	23.46'	4'08'18"
12+50.00	25.00'	26.53'	23.46'	5'42'42"
12+75.00	25.00'	26.53'	23.46'	7'17'05"
13+00.00	25.00'	26.53'	23.46'	8'51'29"
13+25.00	25.00'	26.53'	23.46'	10'25'53"
13+35.34	10.34'	10.98'	9.70'	11'04'55"

Type 1 curb & gutter to be constructed on the pavement on this sheet.
 Top of curb elevation are given for Type 1 curb.



BAUGHMAN COMPANY
 315 Ellis St.
 Wichita, KS 67211
 316-262-7271
 BaughmanCo.com

CORNEJO INDUSTRIAL DISTRICT

CLEVELAND

Sta. 8+00.00 to 12+50.00
 Street Paving Improvements

PROJECT NUMBER:
 472-2021-085726

DESIGN: PSB DRAWN: HJW
 DATE: Oct. 26, 2021

SHEET OF
10 62

File: E:\Projects\Cornejo Industrial District_20-11-P603\Engineering\Phase 1 (only if Multiple Phases)\STR Plans\STR.dwg